

Soundcraft, Harman International Industries Ltd., Cranborne House, Cranborne Road, Potters Bar, Hertfordshire EN6 3JN, UK T: +44 (0)1707 665000 F: +44 (0)1707 660742 E: info@soundcraft.com  
Soundcraft USA, 8500 Balboa Boulevard, Northridge, CA 91329, USA T: +1-818-920-3212 F: +1-818-920-3208 E: soundcraft-usa@harman.com

**H** A Harman International Company

[www.soundcraftdigital.com](http://www.soundcraftdigital.com)  
[www.soundcraft.com](http://www.soundcraft.com)

Part No: ZL0654

Soundcraft®  
**Si3**  
DIGITAL LIVE SOUND CONSOLE



Digital live sound mixing  
for people who like to  
use their digits.



Soundcraft  
**SIB**  
DIGITAL LIVE SOUND CONSOLE



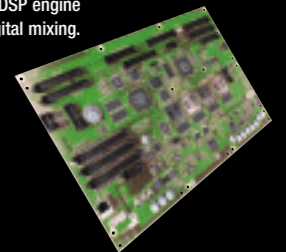
Soundcraft



Just put it where your  
analogue console used to be.

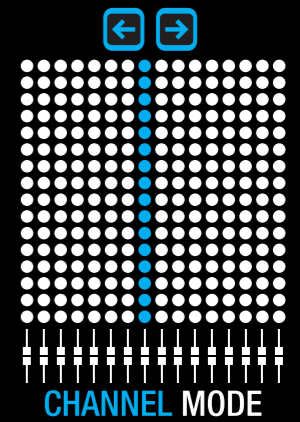
64 inputs, 4 stereo inputs, 24 bus outputs.  
8 matrix outputs, 12 VCAs, 8 mute groups.  
4-band fully parametric EQ with high and low cut filters.  
On-board dynamics.  
Four independent Lexicon processors.  
A physical output and meter for every bus.  
Everything in one box.  
Everything right where you want it.

Meet EMMAT™  
She's a single board computer and DSP engine  
designed for high channel count digital mixing.  
She's the power behind the Si3.  
She's Embedded Multiprocessor  
Mixing Architecture™.



Soundcraft  
**Si3**  
DIGITAL LIVE SOUND CONSOLE

**Si3**



You know what a channel strip looks like.  
So does the Si3.

Look familiar?

In Channel mode, there's a rotary encoder for every channel function with a crystal clear display right next to it.

Expand the channel to control dynamics.

Collapse it and you're back to a conventional channel.

You'll be ready to mix in minutes.



Soundcraft  
**Si3**  
DIGITAL LIVE SOUND CONSOLE

Soundcraft

**Si3**



No need for lateral thinking.  
Get a mix in moments.

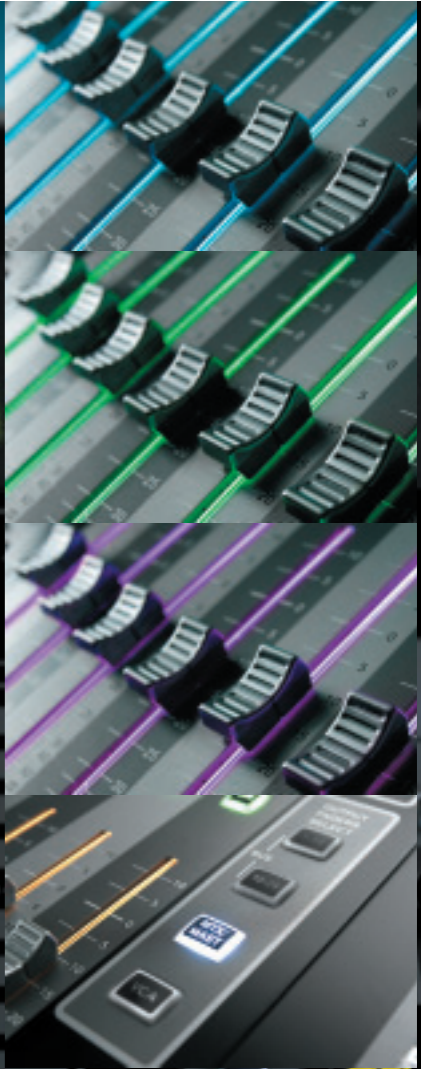
You know what's coming next.  
Global mode.  
All your bus sends in a row, each with its own rotary encoder.  
Or scroll down to the pans.  
Or back up to the input gains.  
It's everything you need, when you need it, where you need it.  
In a row.



Soundcraft  
**SIB**  
DIGITAL LIVE SOUND CONSOLE

Soundcraft

**SIB**



In no time,  
it's showtime.

Welcome to performance mode.  
With the Si3, how you work is up to you.  
Personally, we'd put our VCA groups on the central faders, with dynamics and EQ immediately accessible above.  
But then we don't like to move about too much.  
Need to switch into another mode? No problem.  
Soundcraft's revolutionary FaderGlow™ illuminated fader tracks change colour to remind you which mode you're in – blue for VCAs, green for Groups and so on.



Soundcraft  
**Si3**  
DIGITAL LIVE SOUND CONSOLE



Soundcraft

**Si3**



Distributed Display Technology.  
Clearly a better idea.

No big central screen.  
Instead a series of OLEDs to display visual feedback right where you're working.  
They're much brighter and higher resolution than conventional LCDs.  
They also display in colour and have a much faster response time.  
And you can view them from any angle and in any lighting conditions.  
All of which means the Si3's central touch screen can be compact – for tasks such as naming channels, effects programs, etc.  
And of course you can set up offline on a PC.



Soundcraft  
**Si3**  
DIGITAL LIVE SOUND CONSOLE

Soundcraft

**Si3**



Isn't it cool when the world's leading effects company is in your group?

4 in-built Lexicon processors with immediate access to key functions.  
Instant expansion to control every parameter.  
Or just use the pre-sets.  
As you would expect, they sound great.  
And while we're on the subject of our friends, dynamics processing draws on the experience of companies including BSS Audio and dbx.



Soundcraft  
**SIB**  
DIGITAL LIVE SOUND CONSOLE

Soundcraft

**SIB**





I/Os where they belong.  
Around the back.

No external racks.  
No external processing.  
Everything's in one box.  
With all the I/Os on the back.  
Just put it where your analogue console used to be.



Soundcraft  
**SIB**  
DIGITAL LIVE SOUND CONSOLE

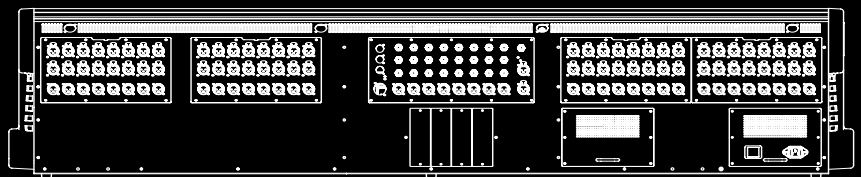
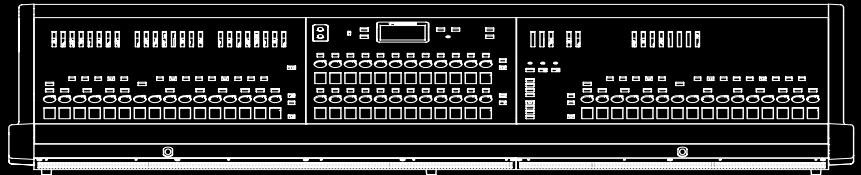
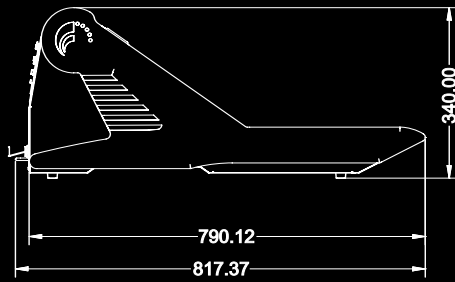
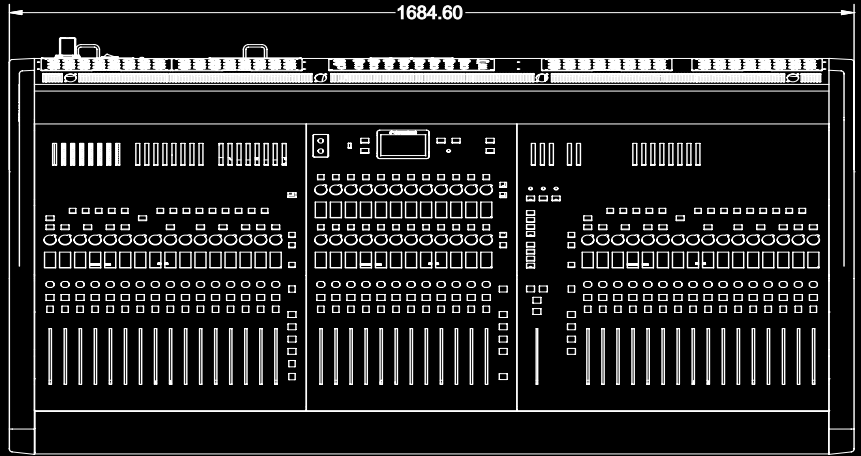
  
Soundcraft

**SIB**



Soundcraft

# Dimensions



Soundcraft reserves the right to improve or otherwise alter any information supplied in this document or any other documentation supplied hereafter. E&OE 01/08.