



COMPACT & VERSATILE INSTALL LOUDSPEAKER SYSTEMS



SGX41

- Outstanding Performance, Miniaturized Enclosure
- 4" Extended-Range Coaxial Transducer
- 4" High Performance Woofer
- 1" Extended Range Soft-Dome Tweeter
- Advanced Crossover Network
- Vented Enclosure

Dimensions (H x W x D)

inch: 6 x 7 x 6

cm: 15.2 x 17.8 x 15.2

Weight (lbs / kg)

4.8 / 1.89



SG42 & SGX42 - StairStep Loudspeaker

- High Output, Small Enclosure
- Wide-Angle 150° x 60° Coverage
- 1" Extended Range Titanium HF Driver
- Dual Heavy-Duty 4" Woofers
- Heavy 18 Gauge Metal Back Box (Optional)
- Built-in Crossover

Dimensions (H x W x D)

Enclosure (inch): 5 5/8 x 16 7/8 x 13 3/16

(cm): 14.2 x 43 x 33.5

Back Box (inch): 5 5/8 x 16 7/8 x 13 3/16

(cm): 14.2 x 43 x 33.5

Weight (lbs/kg)

SG42: 18.76 / 8.5

SGX42: 16.76 / 7.6



SG61 & SGX61

- High Output, Small Enclosure
- Flexible Input Configurations
- RHAON Ready
- Rotatable 150° x 60° Complex Conic Horn
- 1" Extended Range Titanium HF Driver
- Heavy-Duty 6.5" Woofer

Dimensions (H x W x D)

inch: 16 x 9 1/2 x 11 1/4

cm: 40.6 x 24.1 x 28.6

Weight (lbs/kg)

SG61-2 & -2R: 23.62 / 10.71

SGX61: 21.62 / 9.8



SG81 & SGX81

- High Output, Small Enclosure
- Flexible Input Configurations
- RHAON Ready
- Rotatable Complex Conic Horn
- Horn Options: 90° x 60° or 120° x 60°
- 1" Extended Range Titanium HF Driver
- Heavy-Duty 8" Woofer

Dimensions (H x W x D)

inch: 19 3/4 x 11 1/2 x 12 3/8

cm: 50.17 x 29.21 x 31.4

Weight (lbs/kg)

SG81-2 & -2R: 28.1 / 12.74

SGX81: 26.1 / 11.83



SG121 & SGX121

- Compact Multi-Function Design
- Flexible Input Configurations
- RHAON Ready
- Rotatable Complex Conic Horn
- Horn Options: 90° x 60° or 120° x 60°
- 1" Extended Range Titanium HF Driver
- Heavy-Duty 12" Woofer

Dimensions (H x W x D)

inch: 23 x 15 1/4 x 14

cm: 58.4 x 38.7 x 35.6

Weight (lbs/kg)

SG121-2 & -2R: 38.4 / 17.41

SG121-5, -5R: 40.4 / 18.33

SG121-52R: 42.4 / 19.23

SGX121: 36.4 / 16.51

SG151 & SGX151

Dimensions (H x W x D)

inch: 29 1/4 x 17 1/2 x 15 1/2
cm: 74.3 x 44.5 x 39.4

Weight (lbs/kg)

SG151-2 & -2R: 56.8 / 25.76
SG151-5 & -5R: 58.8 / 26.67
SG151-52R: 60.8 / 27.57
SGX151: 54.8 / 24.85

- Compact Multi-Function Design •
- Flexible Input Configurations •
- RHAON Ready •
- Rotatable Complex Conic Horn •
- Horn Options: 90° x 40° or 60° x 40° •
- 1" Extended Range Titanium HF Driver •
- Heavy-Duty 15" Woofer •



SG12S & SGX12S

Dimensions (H x W x D)

inch: 18 x 15 x 22 1/4
cm: 47.7 x 38.1 x 56.5

Weight (lbs/kg)

SG12S-2 & -2R: 49.2 / 22.31
SG12S-5 & -5R: 51.2 / 23.22
SGX12S: 47.2 / 21.40

- Powerful 12" Subwoofer •
- Flexible Input Configurations •
- RHAON Ready •
- High Performance, High Power Woofer •
- Built-In Low Pass Filter •



COMPLEX CONIC HORN OPTIONS

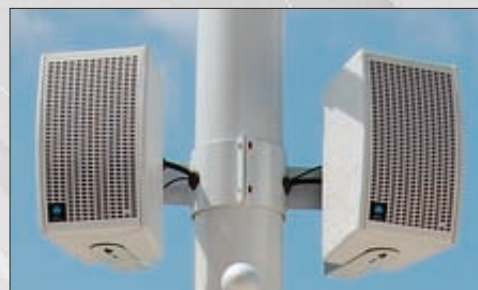
Complex Conic Horns Options are available for SG/SGX81, SG/ SGX121 and SG/SGX151 models. Horns can be rotated in the enclosure, for wide or deep coverage patterns using either vertical or horizontal mounting.



INSTALLATION OPTIONS

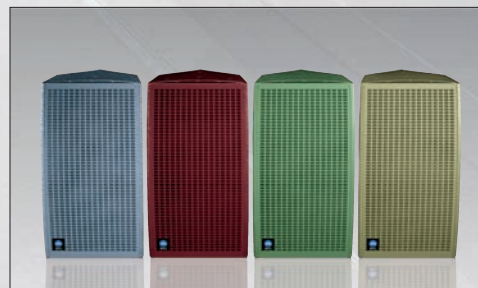
For wall or ceiling mounting applications, Omnimount nut-plates and mounting hardware are available on all models (Except for SGX41, SG/SGX42 and SG/SGX12S).

U-brackets are also available on all models (Except for SG/SGX42 and SG/SGX12S).



WEATHER RESISTANT & CUSTOM PAINT

SYGMA Series loudspeakers are also available with weatherized woofer cones and connectors, in weather resistant fiberglass, Tufftex Elastomer finishes and custom colors.



Loudspeakers; amplifiers; signal processors; audio and control networks. SYGMA brings them all together to create a new kind of sound system, a new level of performance. World-class European transducers are paired with our advanced Complex Conic horns for audiophile reproduction that make performances and audiences truly come alive.

PF Series Intelligent Digital Amplifiers can connect to RHAON, the Renkus-Heinz Audio Operations Network. RHAON gives you complete control of digital audio distribution, loudspeaker processing and system management.

The global SYGMA development and manufacturing process delivers unsurpassed quality and innovation, for performance and durability. Before we'll ship them, your loudspeakers have to meet our exacting requirements.

RENKUS-HEINZ AUDIO OPERATIONS NETWORK

RHAON

Passive, powered or networked, you can choose the system configuration that meets your needs at any time. Whenever you are ready for Ethernet audio networking, your Sygma loudspeakers are too. At the factory or in the field, the SGX passive connector plate can be easily replaced by one of five PF Series intelligent Class D digital amplifiers.



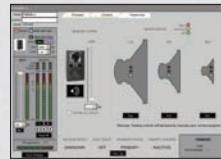
PF Series Class D Amplifiers



Connect



Control



Supervise

A Windows GUI empowers RHAON users to connect each Renkus-Heinz powered loudspeaker to a CobraNet network, control 8 parametric EQ filters, up to 340 ms of delay and dynamics processing via onboard DSP, and supervise both the amplifier and drivers.

COMPLEX CONIC HORNS: Naturally Superior Design



Renkus-Heinz innovation takes many forms. None is as well known or widely respected as our Complex Conic horns. Their unique design is based on the spherical expansion of the acoustic pressure wave, so they don't distort sound while controlling it the way ordinary horns can.

The Complex Conic flare changes smoothly from a narrow diffraction slot, through an oval expansion, to a circular mouth. There's no "pattern flip" at the low end of the range, or "feathering" at the high end – just smooth and consistent pattern control. Complex Conic Horns work better than ordinary horns, and they sound more natural too with lower distortion and minimal coloration.

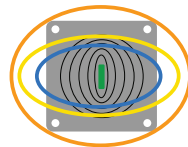
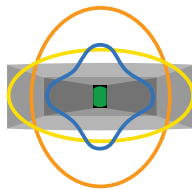


Constant Directivity Horn

Complex Conic Horn

Standard Coverage

With Horn Rotated 90



Coverage Patterns

