



Heavy Duty Fast-Fold® Deluxe

The Heavy Duty Fast-Fold® Deluxe screen features a sturdy 3 1/2" x 1 1/4" aluminum frame with snap latch hinges for simple, quick set up and tear down. The Heavy Duty Fast-Fold® Deluxe is available in sizes from 7' x 9' to 16' x 27'6" and is customizable upon request. The Heavy Duty Fast-Fold® Deluxe is standard with a silver anodized frame but is also available with a black frame finish. All screens up to 16' high are seamless. Screen surfaces include Da-Mat®, Da-Tex® (rear), High Contrast Da-Tex® (rear), Pearlescent, Cinema Vision, Dual Vision and Ultra Wide Angle (rear).

In addition to its durable construction, Da-Lite's Heavy Duty Fast-Fold® Deluxe screen with Da-Mat® fabric is now a foldable black backed material. This exclusive feature allows for the portability of a Fast-Fold® screen with the superior image quality and opacity of a black backed material.



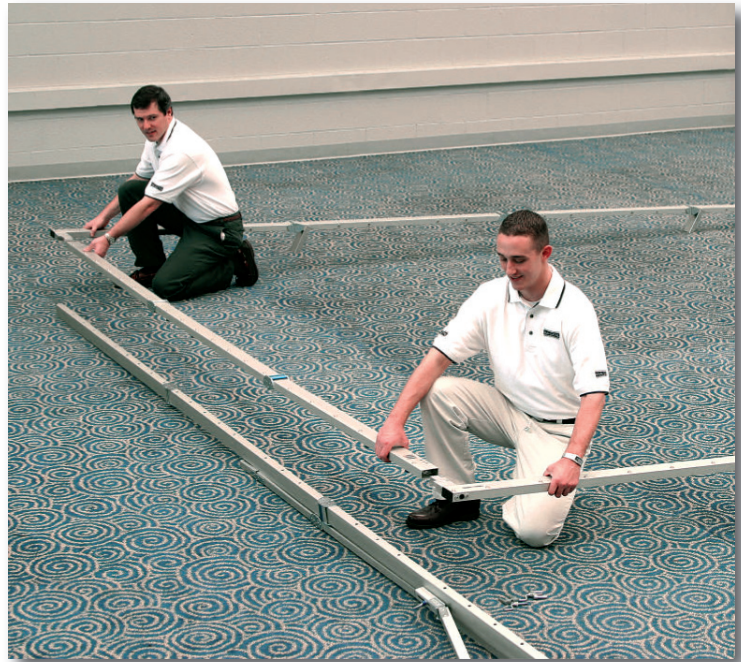
Da-Lite's Heavy Duty Fast-Fold® Deluxe Complete Screen includes:

- 3 ½" x 1 ¼" Folding Frame and Legs with Anti-Sway Braces.
- Projection Surface of your choice (Foldable Black Backed Da-Mat®, Da-Tex® (rear), High Contrast Da-Tex® (rear), Pearlescent, Cinema Vision, Dual Vision and Ultra Wide Angle (rear)).
- Speedy Cranks for quick, easy assembly.
- Durable wheeled poly case with built in handles and Speedy Crank storage compartment. Da-Lite poly cases meet or exceed Air Transport Association (ATA) Specification 300 standards.

Heavy Duty Fast-Fold® Deluxe frames are joined at the corners using Speedy Cranks. This provides greater strength and easy set up.

Each frame section folds for storage utilizing Da-Lite's simple Snap-Latch design. Rugged 3 ½" x 1 ¼" extruded aluminum tubing provides greater strength while allowing for lightweight frame reliability.

Black powder coated frame optional.



Frame corners are easily assembled with Speedy Cranks.

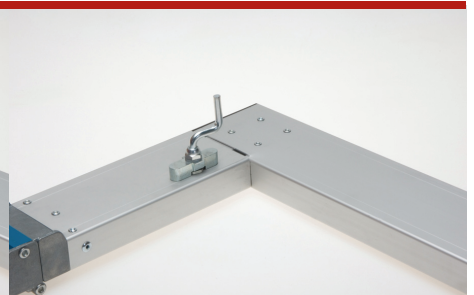
Step 1



Step 2



Step 3





Heavy Duty Fast-Fold® Deluxe combines simple, quick set up and portability with professional, clean appearance.

Available in sizes from 7' x 9' up to 16' x 27'6" in NTSC Video, HDTV and Square formats.

Custom sizes are available upon request.

All Heavy Duty Fast-Fold® Deluxe surfaces are interchangeable with Fast-Fold® Truss surfaces for easy substitution.

Screen height can be adjusted up and down in 6" increments.



VIDEO FORMAT

H x W	Overall Size		Net Picture Area		Approx. Ship. Wt.	
	H x W	M	H x W	M	lbs.	kg
7' x 9'	2.13 x 2.74		6' x 8'	1.83 x 2.44	122	55.3
8'6" x 11'	2.59 x 3.35		7'6" x 10'	2.29 x 3.05	149	67.6
10' x 13'	3.05 x 3.96		9' x 12'	2.74 x 3.66	157	71.2
11'6" x 15'	3.51 x 4.57		10'6" x 14'	3.20 x 4.27	176	79.8
13' x 17'	3.96 x 5.18		12' x 16'	3.66 x 4.88	188	85.3
16' x 21'	4.88 x 6.40		15' x 20'	4.57 x 6.10	225	102.1
19' x 25'	5.79 x 7.62		18' x 24'	5.49 x 7.32	304	137.9






HDTV FORMAT

H x W	Overall Size		Net Picture Area		Approx. Ship. Wt.	
	H x W	M	H x W	M	lbs.	kg
8'6" x 14'4"	2.59 x 4.37		7'6" x 13'4"	2.29 x 4.06	170	77.1
10' x 17'	3.05 x 5.18		9' x 16'	2.74 x 4.88	169	76.7
11' x 19'	3.35 x 5.79		10' x 18'	3.05 x 5.49	187	84.8
11'6" x 19'8"	3.51 x 6.00		10'6" x 18'8"	3.20 x 5.69	195	88.5
12'3" x 21'	3.73 x 6.40		11'3" x 20'	3.43 x 6.10	202	91.6
13' x 22'4"	3.96 x 7.42		12' x 21'4"	3.66 x 7.11	240	108.9
14'6" x 25'	4.42 x 7.62		13'6" x 24'	4.04 x 7.32	249	112.9
16' x 27'6"	4.88 x 8.38		15' x 26'6"	4.57 x 8.08	325	147.4

SQUARE FORMAT

H x W	Overall Size		Net Picture Area		Approx. Ship. Wt.	
	H x W	M	H x W	M	lbs.	kg
11' x 11'	3.35 x 3.35		10' x 10'	3.05 x 3.05	151	68.5
13' x 13'	3.96 x 3.96		12' x 12'	3.66 x 3.66	160	72.6
9' x 25'	2.74 x 7.62		8' x 24'	2.44 x 7.32	210	95.3

Heavy Duty Fast-Fold® Deluxe

 Screen Surface can be cleaned.
  Flame retardant.
  Mildew resistant.
  Number shows the optimal width of the ideal viewing half angle.
  Indicates reflectance readings. The higher the number, the greater light transmitted to the audience.

DA-MAT®

A screen with a smooth, white vinyl finish for precise image reproduction that provides an exceptionally wide viewing angle with no resolution loss. Its versatility makes it a great choice for situations with good control over ambient light and where an exceptionally wide viewing angle is necessary.




 60°
  1.0

DA-TEX®

A translucent, neutral gray vinyl fabric that allows rear projection in applications where a rigid acrylic or glass screen are not possible. This is specially designed gray vinyl surface offers the same high transmission and low reflectance values as a rigid rear projection screen for optimal viewing. It yields excellent color rendition, image contrast and a moderately wide viewing angle.




 30°
  1.3

ULTRA WIDE ANGLE

Ultra Wide Angle is a flexible rear projection fabric formulated for applications where exceptionally wide viewing angles are desired and ambient light is controlled. Based on its ability to diffuse light uniformly, Ultra Wide Angle fabric is ideal for installations utilizing multiple projection edge blending or wide format screens with short focal length projection lenses. By virtue of its characteristics, Ultra Wide Angle fabric dramatically reduces the potential of hot spotting.




 80°
  0.70



Da-Lite Screen Company, Inc.

3100 North Detroit Street
 P.O. Box 137
 Warsaw, IN 46581-0137 U.S.A.
 Phone: 574.267.8101
 Toll Free: 800.622.3737
 Fax: 574.267.7804
 Toll Free Fax: 877.325.4832
 www.da-lite.com
 info@da-lite.com

CINEMA VISION

A unique non-supported vinyl fabric that offers a bright, uniform image with no color shift at any viewing angle. This surface is designed to provide a higher amount of brightness for lower output projector types such as CRT. Its increased reflectivity will help enhance the image brightness in situations where a low level of ambient light is present.




 45°
  1.3

HIGH CONTRAST DA-TEX®

High Contrast Da-Tex is a unity gain rear projection surface with a specially designed dark gray tint and is formulated to provide lower black levels for today's high output projectors. This surface features optical characteristics similar to rigid rear projection screens.




 40°
  1.0

PEARLESCENT

A non-supported vinyl fabric, offering a higher degree of reflectivity and brilliance without loss of image quality or resolution. This surface is a good choice when producing video images with a lower output projector and where there is a high amount of ambient light present.




 40°
  1.5

DUAL VISION

A unity gain flexible projection fabric capable of both front and rear projection. The Dual Vision surface is ideal for video projection under controlled light conditions. With an exceptionally wide viewing cone, each seat in the audience will observe a uniform, sharp image with no color shift.




 50°
  1.0



Foldable Black Backed Da-Mat® Fabric