

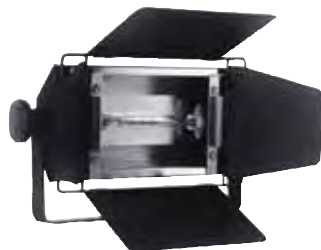
AUDIO



**ALTMAN**  
Lighting, Inc.

**ALTMAN Q-LITE OPEN FACE FIXTURE**

These open-face luminaires are compact, lightweight, multipurpose flood/fill lights ideal for stage, studio and location lighting applications. Designed to operate high color-temperature tungsten halogen lamps, they are well suited for use in tight or confined spaces where maximum light output and beam spread are required for fill or flood lighting. The Q-Lite is rated for up to 1000W lamps, and the Q-Lite Jr. is rated for up to 650W. 36" Power lead. Lamps not included.



ITEM	DESCRIPTION	PRICE
Q-LITE	1000W open face fixture	176.25
Q-LITE-JR	650W open face fixture	157.50
QL-BD4	Barn door for Q-LITE	33.00
QL-JR-BD4	Barn door for Q-LITE-JR	27.75
FCM-EIKO	1000W, 3200K lamp	6.29



**ELATION PRO LIGHTING TVL3000 LED HIGH-POWER MODULAR TV LIGHT PANEL**

Comes in warm white (3200K) and cool white (5600K) versions and features (24) 3W high-power LEDs that have an output of 3300lux at 5M (300fc at 16ft.) Fixture is convection cooled and operates silently. Max output is 70W and it can be operated manually or via 1-channel of DMX. Includes adjustable barn doors, a die-cast aluminum case, and 10°, 25°, 40°, 60° beam angle lens kits (fixture's beam angle is 115° without a kit attached). Has 5-pin DMX in/out, Powercon in.



ITEM	DESCRIPTION	PRICE
TVL-3000/WW	3200K warm white LED modular TV light panel	782.94
TVL-3000/CW	5600K cool white LED modular TV light panel	782.94
TVL3B21	Bracket for 2 TVL3000s	65.18
TVL3B22	Bracket for 4 TVL3000s	195.68
TVL3B31	Bracket for 3 TVL3000s	84.75
TVL3B32	Bracket for 6 TVL3000s	228.30



**AVENGER**

**AVENGER STANDS & GRIP EQUIPMENT**

ITEM	DESCRIPTION	PRICE
A0003	Mini aluminum Century stand, 8.82 lbs. max load	113.93
A2033L	40" steel sliding base Century stand, 22.05 lbs. max load	148.10
A2018F	40" steel turtle base Century stand, 22.05 lbs. max load, chromium plated steel stand with 3 sections and 2 risers	121.81
G100	13 lb. sand bag, sold empty	28.70
G200	35 lb. sand bag, sold empty	44.70
D200	2.5" grip head	30.57
D200B	As above, in black	32.05
D520L	40" extension arm for D200	40.91
D520LB	As above, in black	42.43
D800-KIT	Grip kit with D200B grip head, D520B extension arm and bag	108.02
C1000	Drop-ceiling scissor clamp	9.97

**ikan**

**IKAN IDM1500B DUAL-COLOR LED LIGHT**

A dual-color LED light that is perfect for shooting under varied lighting conditions. This ultra-wide angle, location/field style LED is ideal for chroma-key (green screen) and full body lighting applications. With the IDM1500B there are no gels required, just dial in your desired color temperature and you're in business! The IDM1500B features variable daylight to tungsten color temperatures, integrated barn door intensifiers, 24V power, built-in dimming and a stand mount.



**NEW!**

ITEM	DESCRIPTION	PRICE
IDM1500B	LED Dual Studio Light with DMX	1259.00

**IKAN IB508 DUAL-COLOR LED LIGHT**

The ikan IB508 is a dual-color, 3200K-5600K, lightweight (3.1 lbs), portable LED lighting solution. Powered by 2 Sony-style 'L' series batteries (included) with on-board battery life indicator, diffuser, battery charger and a ball head mount.



ITEM	DESCRIPTION	PRICE
IB508	Dual-Color LED Light	494.00

**IKAN SL45 STUDIO LED LIGHT**

The SL45 is outfitted with 45 high-intensity "Cree"-style emitters which provide a high color rendering index of 91, making it a great choice for studio usage. Easy to unpack and setup, it's also a great portable/location light fixture choice. Constructed from heavy-duty aluminum, it includes a V-Mount plate for high-capacity pro batteries, egg crate and diffusion filters.



ITEM	DESCRIPTION	PRICE
SL45	Studio LED Light	899.00
C-2KS-KIT	Charger/Battery kit	895.40

**IKAN SL120 STUDIO LED LIGHT**

The SL120 is outfitted with 120 high-intensity "Cree"-style emitters which provide a high color rendering index of 91, making it a great choice for studio use. Features of particular note include barn doors with Intensifiers, DMX 512 control of onboard dimmer and an aluminum heat sink to cool the unit. A yoke mount is included.



ITEM	DESCRIPTION	PRICE
SL120	Studio LED Light Fixture	2159.00



Follow us!

Let us show you exactly what to expect with our lighting design computer modeling and pre-visualization.

# LITE PANELS

## LITEPANELS CROMA

Designed for ENG and other fast-paced video recording applications, this fixture offers soft light with the addition of variable color temperature. With smooth dimming, a soft rubber housing, and a cool running temperature, Croma mounts on DSLRs, camcorders, and stands to provide flicker-free light at any frame rate or shutter angle. Draws a total of 9W and runs off an AC adapter or (6) AA batteries. Comes with diffusion gel, shoe-mount, AC power supply and carry bag. Additional accessories (mounts, etc.) are sold separately – please contact your Sales Pro for more information.



ITEM	DESCRIPTION	PRICE
905-4023	On-camera variable-temp LED fixture	584.10

## LITEPANELS MICRO ON-CAMERA LED LIGHTS

A compact lighting tool for small DV camcorders, the Micro™ uses LED technology in an ultra-lightweight package. Operators will enjoy luminous, soft, directional lighting with the same warmth and great color characteristics that make Litepanels an integral part of television, broadcast news and feature production. The top-mounted dimming knob is ideal for DV and DSLR cameras. Micro™ runs off 4 standard AA batteries, MicroPro™ doubles the light output, uses 6 standard AA batteries and includes a carrying bag.



ITEM	DESCRIPTION	PRICE
LP-MICRO	25W on-camera LED light, ball head shoe mount, gels	198.00
LP-MICRO-PRO	50W on-camera LED light, ball head shoe mount, gels, carrying bag	315.00

## LITEPANELS 1X1 SERIES LED LIGHT PANELS

These 1'x1' LED light panels are thin and lightweight, and can be joined together for a variety of lighting configurations. Even though the fixture draws in only 40W at 24V, its output is equivalent to 500W. The unique design of the fixture allows you view your subject through its body, thanks to its pattern of hundreds of "mini-portals". Dimmers go from 100%-0% with little to no color modulation. The bi-focus models allow you to crossfade between the 2 different beam spread angles for a combined output. Packages and accessories (filters, power supplies, mounts, stands, etc.) sold separately – please contact your sales representative.



ITEM	DESCRIPTION	PRICE
903-1001	1x1 mono daylight flood, 50° beam spread	1795.00
903-1002	1x1 mono daylight flood, 30° beam spread	1795.50
903-1003	1x1 mono tungsten flood, 50° beam spread	1795.50
903-1004	1x1 mono daylight super-spot, 15° beam spread	1795.50
903-2013	1x1 bi-color daylight/tungsten flood, 50° beam spread	2695.50
903-2021	1x1 bi-focus daylight spot/flood, 30°/50° beam spread	2695.50
903-2024	1x1 bi-focus daylight spot/super-spot, 30°/15° beam spread	2695.50

## LITEPANELS INCA™ LED FRESNELS

These DMX-controllable tungsten-balanced fixtures are for use in applications where LED lighting needs to match existing incandescent (or other equally warm) lights. The Inca's controllability and light-shaping properties are similar to those of the average Fresnel, but they consume less power and weigh less. They offer 100%-0% dimming with no noticeable color shift via on-fixture dial or integrated DMX. Includes standard yoke, power supply, and barn door. Gels, carrying bag and other accessories are sold separately – please contact your Sales Pro.



ITEM	DESCRIPTION	PRICE
906-4003	Inca 4, 4" tungsten LED Fresnel	1345.50
906-2003	Inca 6, 6" tungsten LED Fresnel	2605.50

## LITEPANELS SOLA 6™ LED FRESNEL

This fully dimmable, flicker-free daylight-balanced fixture offers the soft light quality of Litepanels' Sola series and the controllability and light-shaping properties of a Fresnel. The Sola 6 uses about a tenth of the power and 1/3 the weight of a conventional Fresnel. Offers 100%-0% dimming with no noticeable color shift and focus control from 67° to 15°. Focus and dimming are controlled via onboard touchscreen or via integrated DMX. Includes standard yoke, barn door, and power supply. Accessories (gels, etc.) are available separately – please contact your Sales Pro.



ITEM	DESCRIPTION	PRICE
906-2002	LED daylight-temperature Fresnel with 6" lens	2605.50

## LITEPANELS HILIO HIGH OUTPUT LED FIXTURE

Litepanels Hilio is capable of providing daylight-balanced illumination over a 20' to 25' distance without requiring a ballast. The new Hilio washes a scene in soft light while incorporating all the advantages of Litepanels proprietary LED technology; including 100% to 0% dimming with no noticeable color shift. The Hilio fixture is well-suited for today's High Definition productions featuring standard yoke, integrated rear gimbal plate for accessories, and integrated DMX module for remote dimming control. Incredibly energy efficient, the Hilio draws just 115W.



ITEM	DESCRIPTION	PRICE
907-1001	High Output LED Fixture	3145.50



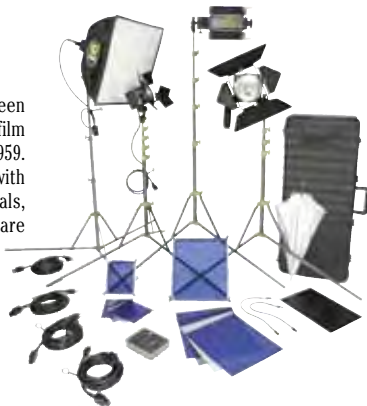
Ask us about our 2 and 3-year extended warranties!

- AUDIO
- MUSIC
- COMPUTER AV
- VIDEO
- LIGHTS
- ACCESSORIES



# lowel

Lowel systems and kits have been an industry standard for video, film and still photography since 1959. Combining innovative design with modern, high-strength materials, Lowel lights and accessories are efficient, lightweight and durable.



## LOWEL DV CREATOR 44 KIT

**Includes:**

- 1 Rifa-lite 44 (LC-44)
- 1 250W, 120V lamp (GCA)
- 1 Pro-light (P1-10)
- 1 Pro-light 4-way barndoors (iP-20)
- 1 250W, 120V lamp (GCA)
- 1 Omni-light (O1-10)
- 1 Omni-light 4-way barndoors (O1-20)
- 1 500W, 120V lamp (FTK)
- 1 Tota-light (T1-10)
- 1 750W, 120V lamp (EMD)
- 4 Uni TO stands (UN-55)
- 1 Tota-frame (T1-20)
- 1 Assorted gels (T1-78)
- 1 Pro & i gel frame (iP-40)
- 1 iP Assorted gels (iP-78)
- 1 Flexi-shaft pkg (2) (T1-50)
- 1 Tota-flag (T1-52)
- 1 Tota-brella (T1-25)
- 1 T/O Lampak (TO-61)
- 1 VIP Lampak (VIP-61)
- 1 TO-83 case

ITEM	DESCRIPTION	PRICE
DV-9023Z	DV Creator 44 Kit	1386.95

**LOWEL LIGHTING PRIME LEDS** A new series of LED fixtures designed for use in production facilities and for location setups. The Prime LEDs have a wider 50° beam angle producing a brighter light than similarly sized units. They can be dimmed manually or via DMX and feature quiet fanless operation. Available in daylight or tungsten colors.



ITEM	DESCRIPTION	PRICE
PRM-200DA	Prime LED 200, Daylight, 17.7x14.9"	1613.18
PRM-200TU	Prime LED 200, Tungsten, 17.7x14.9"	1613.18
PRM-400DA	Prime LED 400, Daylight, 24.9x14.9"	2081.52
PRM-400TU	Prime LED 400, Tungsten, 24.9x14.9"	2081.52

**LOWEL BLENDER** Lowel Blender™ brings intuitive lighting to your location. 2 sets of LEDs in tungsten and daylight color are quickly and easily blended with rotary dimmer controls, allowing you to match the mixed light sources of your real world location, or create a contrasting color blend to make your subject stand out. Powered by AC adapter or optional battery sled for maximum flexibility. Blender packs more punch than you've come to expect from compact LED lights, and its small size (4"x3"x3") makes it small enough to fit on a pistol grip. Supplied with a set of front diffusers for variable softening and diffusing of the blended output.



ITEM	DESCRIPTION	PRICE
BLN-10	Blender with AC adapter	538.95
BLN-911LB	Blender with Panasonic battery sled	599.95
BLN-912LB	Blender with Sony battery sled	599.95
BLN-913LB	Blender with Canon battery sled	599.95

**LOWEL GL-1 POWER LED** Ideal for the wedding, event, location portrait and architectural photographer, this portable focusing LED light features a powerful tungsten color temperature. Quickly and effectively light your scene on the go. 5:1 focus range lets you zero in to highlight your subject with a tight spot, or pull out to wide flood and add fill-light to a larger area. Adjustable dimming trigger quickly gets the perfect light level for short term handheld use; or lock the light ON and dial in an intensity for longer term constant output. Perfect for mounted use or time lapse light painting.



ITEM	DESCRIPTION	PRICE
GL-1	Dimmable focusing LED fixture, rechargeable battery and charger	CALL

## LOWEL PRO-LIGHT, I-LIGHT

Portable lights for both AC and battery power. Features interchangeable reflectors, focus capability, inexpensive halogen lamps and a wide variety of accessories, including swing-away accessory holders. #2 (IP-17) re-lector and Prismatic glass (IP-52) is included.



ITEM	DESCRIPTION	PRICE
P2-10	Pro-light, 120V AC 50-250W, 4' cable, 12' extension cable, stand link	127.95
I-01	I-Light 12-14V, with 55W and 100W lamp, 4' cable with cigarette lighter plug, Low link, Cam-link, VIP Stand link and focus knob extension	167.58
I-02	I-Light with 4-pin XLR connector	172.88
I-045	I-Light with Anton-Bauer tap	172.88
ID-01	ID-Light like i-Light with dimmer	270.95
ID-02	ID-Light with 4-pin XLR connector	270.95
ID-045	ID-Light with Anton Bauer tap	281.87

**LOWEL RIFA-LITE** For beautiful soft key or fill lighting. Compact, lightweight and self-contained. Woven glass front diffuser with exceptional heat resistance.



ITEM	DESCRIPTION	PRICE
LC-44EX	Rifa-Lite 250W 16"x16"	339.95
LC-44EC/50	Egg crate for LC-44	181.48
LC-55EX	Rifa-Lite 500W 21"x21"	491.95
LC-55EC/40	Egg crate for LC-55	220.17
LC-66EX	Rifa-Lite 750W 25"x25"	570.95
LC-66D	Baffle for LC-66	159.06
LC-66EC/40	Egg Crate for LC-66	260.61
LC-88EX	Rifa-Lite 1000W 32"x32"	680.25
LC-88D	Baffle for LC-88	165.94
LC-88EC/40	Egg Crate for LC-88	343.34

## LOWEL TOTA-LIGHT BROAD SOURCE

Exceptionally wide-angle halogen source. Gull-wing reflector produces smooth, efficient light pattern. Watts: 750, 650, 500 and 300 at 120V; 800 at 220/240V. Light controls: umbrella, gel frame, flags, etc. Mounting system: stand, wall/door mount, clamps. Protective front screen. Closes compactly for storage and travel.



ITEM	DESCRIPTION	PRICE
T1-10	Tota-light with 16' AC cable	133.95

## LOWEL OMNI-LIGHT FOCUSING

Double parabolic peened reflector. Halogen source. Focus range up to 10:1. Watts: 500 and 420 at 120V; 650 at 220/240V; 250 at 30V (battery operation); 100 at 12V (car and battery operation). Quick-change high-intensity reflector. Light controls: expandable barndoors, snoot, scrims, dichroic filter, diffuser, cookaloris. Uses Tota accessories: umbrella, gel-frame, flags, etc. Mounting system: stand, clamps, wall/door mount, camera-top. Protective front screen.



ITEM	DESCRIPTION	PRICE
O1-10	Omni-light with 16' cable	158.95
O1-20	Omni barndoors	57.95



Follow us!

Let us show you exactly what to expect with our lighting design computer modeling and pre-visualization.



**MANFROTTO CONTINUOUS LED LIGHTS**

These portable, daylight-balanced on-camera lights attach via shoe mount and are great for low-light close-up video shots, macro photography, or other situations that call for lighting that is less harsh than a regular on-camera flash. All run on AAA batteries (not included).



ITEM	DESCRIPTION	PRICE
ML120	Pocket-12 LED light, 42 lumens, 120lx @ 1m	59.89
ML240	Mini-24 LED light, 84 lumens, 220lx @ 1m	79.99
ML360	Midi-36 LED light, 126 lumens, 420lx @ 1m	129.89

**MANFROTTO HYBRID LED LIGHTS**

These on-camera lights mount via shoe mount and can emit a flash of light (triggered by sync cable) that is four times more powerful than its continuous light setting. The Hybrid+ models come with a diffuser and two gels. All models can be mounted horizontally or vertically, which allows you to mount multiple units nearby each other for larger light output. Great for low-light conditions.



ITEM	DESCRIPTION	PRICE
ML360H	Midi-36 Hybrid with 36 LEDs, 126 lumens, 420lx @ 1m	169.89
ML360HP	Midi-36 Hybrid+ with 36 LEDs, 126 lumens, 420lx @ 1m	199.89
ML840H	Midi-84 Hybrid+ with 84 LEDs, 294 lumens, 850lx @ 1m	299.89

**MANFROTTO SNAKE ARMS**

This accessory is designed to hold a light or camera (DSLR-sized) in a variety of unique positions. Simply twist the arm into the desired shape and tighten the bolt on the end. Great for tight fits in and around other equipment. The MA050ASC comes with a super clamp that allows you to attach the Snake Arm to poles of various diameters.



ITEM	DESCRIPTION	PRICE
MA050A	Snake arm	193.65
MA050ASC	Snake arm with super clamp	213.71



**MANFROTTO DADO UNIVERSAL JUNCTION KIT**

This expandable modular mounting system allows you to attach small cameras, lights, and a variety of other accessories in a number of unique positions. Great for mounting multiple accessories close to your camera, but on a separate stand or your tripod's legs.

ITEM	DESCRIPTION	PRICE
MSY0580A	DADO kit with tubes, 6 pins, 1 sphere	78.65
MSY0590A	DADO kit with 3 tubes, 3 pins, 1 sphere	57.78



**SMITH-VICTOR K78 PROFESSIONAL PORTRAIT LIGHTING KIT**

This kit consists of (2) 765UM 600W quartz lights, (1) 750SG 1,000W quartz Broad Light, (2) Raven RS8 8' black aluminum light stand, (1) Raven RS13 13' air-cushioned black aluminum light stand, (1) MB150 boom arm, (1) 45" black-backed white umbrella, on DYH 600W quartz lamp, (1) FHM 1,000W quartz lamp, (1) EYH 250W quartz lamp, (1) SBC1236 12"x36" strip soft box w/ mounting bracket, (1) wheeled soft case and (1) Imaging with Light lighting guide.



ITEM	DESCRIPTION	PRICE
K78	Professional portrait kit	849.00

**SMITH-VICTOR AL415 ON-CAMERA VIDEO LIGHT**

Lightweight video light complete with barndoors. Provides 150W of pure, clean quartz lighting. Tilts for angle adjustment and mounts on a standard camera shoe. Also features a diffused glass safety shield. 150W lamp is included. Measures 2.75"x2.75"x4.25" and weighs only 17oz.



ITEM	DESCRIPTION	PRICE
AL415	15W on-camera video light	66.00

**SMITH-VICTOR KLB-3 LIGHT TENT KIT**

A professional-quality light tent kit. Includes (1) 28" light tent, (1) black and white background sweep, (3) 12" reflectors, (3) socket and cordset assemblies, (3) ECT 500W photoflood lamps, (1) mini clamp, (1) MB110 mini boom-arm, (2) Raven RS8 8' light stands, (1) P900 Pinnacle tripod and (1) Imaging with Light lighting guide.



ITEM	DESCRIPTION	PRICE
KLB-3	Professional light tent kit	282.00



**ROSCO LITEPAD™ SLIM PROFILE LIGHT SOURCE**

A slim profile light source that generates a soft, even beam of light and almost no heat. Its small form and lightweight design make it perfect for many places where a larger, typical luminaire could not fit. Drawing just a few Watts of power, LitePad is simple, fast and economical to use in film and television, theatre, live entertainment, and retail/event lighting. Units are sold individually with a simple 12V transformer, or in kits. Axiom models feature steel and aluminum housing and can be affixed to C-stands via bracket, or mounted using velcro, among other methods. Daylight panels listed below, tungsten and high output models are also available.



ITEM	DESCRIPTION	PRICE
LITEPAD-12X12-DL	12"x12" panel, includes power supply	495.00
LITEPAD-3X3-DL	3"x3" panel, includes power supply	48.51
LITEPAD-3X6-DL	3"x6" panel, includes power supply	98.01
LITEPAD-3X12-DL	3"x12" panel, includes power supply	148.50
LITEPAD-6X6-DL	6"x6" panel, includes power supply	138.60
LITEPAD-6X12-DL	6"x12" panel, includes power supply	321.75
LITEPAD-AXIOM-3X6-D	3"x6" Axiom panel, includes power supply	193.05
LITEPAD-AXIOM-3X12-D	3"x12" Axiom panel, includes power supply	266.31
LITEPAD-AXIOM-6X6-D	6"x6" Axiom panel, includes power supply	266.31
LITEPAD-AXIOM-6X12-D	6"x12" Axiom panel, includes power supply	464.31
LITEPAD-AXIOM-12X-D	12"x12" Axiom panel, includes power supply	593.01
LITEPAD-AXIOM-24X-D	24"x24" Axiom panel, includes power supply	890.01
LITEPAD-BRACKET-6	6" LitePad mounting bracket	34.64
LITEPAD-BRACKET-12	12" LitePad mounting bracket	47.51
LITEPAD-DMX-DIMMER	2-channel DMX dimmer for LitePads	296.01
LITEPAD-PRO-GAFFER	Contains 2 of each size LitePad (except 3"x3"), eggcrates, brackets, color filter packs, Pelican case, etc.	3860.01
LITEPAD-QUICK-KIT	Contains 1 of each size LitePad (except 3"x3"), mounting brackets, cables and Pelican case	2276.01
LITEPAD-DIGI-SHOOTER	(1) 3" High-output LitePad, 5 Axiom LitePads, cables, eggcrates, color filter packs, Pelican case, etc.	2699.10
LITEPAD-STILL-PHOTO	(1) 3" High-output LitePad, 2 Axiom LitePads, 2 full spot lenses (3"x6", 6"x6") cables, eggcrates, color filter packs, Pelican case, etc.	809.10
LITEPAD-HO+-EVERYWH	6 High-output daylight LitePads, 6 High-output tungsten LitePads, cables, brackets, and Pelican case	3239.10



AUDIO



**ROSCO**

**ROSCO DIFFUSION KIT** Diffusion materials help control the character of the lighting in each scene. Rosco's range of diffusion filters are offered in closely graded steps so the photographer can select the exact filter needed for each situation. Kit includes 15 diffusion filters.



ITEM	DESCRIPTION	PRICE
09020-LKIT	Diffusion Kit, 20"x24"	91.95
09020-SKIT	Diffusion Kit, 10"x12"	35.75

**ROSCO COLOR EFFECTS KIT** The ten color filters in this kit are selected from a range of over 300 colors that Rosco produces for theatre, film and television. Each of the 15 sheets of color is deep-dyed on a heat-resistant base. They are ideal for most video production lights.



ITEM	DESCRIPTION	PRICE
09040-LKIT	Color Effects Kit, 20"x24"	91.95
09040-SKIT	Color Effects Kit, 10"x12"	35.75

**ROSCO COLOR CORRECTION KIT** This kit is used for color correction of virtually all mixed-light sources found on location. There are sixteen filters for light source color correction. Materials include a range of blue and amber balancing filters along with a selection of green and magenta color compensating filters.



ITEM	DESCRIPTION	PRICE
09030-LKIT	Color Correction Kit, 20"x24"	91.95
09030-SKIT	Color Correction Kit, 10"x12"	35.75

**ROSCO CALCOLOR KIT** The CalColor Kit consists of 10" x 12" sheets of each of the 33 colors in the CalColor range. This kit also includes a technical brochure and reference swatchbook. Packaged in a handy storage pouch.



ITEM	DESCRIPTION	PRICE
04000-OKIT	CalColor Kit, 10"x12"	50.16

**westcott.**

**WESTCOTT 4-IN-1 REFLECTOR KITS**

Collapsible illuminator reflectors are compact and lightweight. When open, they are flat squares or rectangles with no disassembly required to close them. High-carbon steel frames are riveted to stand up to professional use. Lifetime warranty on the outer frame. The Sunlight/Silver kits contain 1 sunlight/silver panel and 1 white diffusive/reflective panel. The Gold/Silver kits contain 1 gold/silver panel and 1 white diffusive/reflective panel.



ITEM	DESCRIPTION	PRICE
1021	30" Sunlight/Silver kit	69.90
1031	42" Sunlight/Silver kit	79.90
1036	52" Sunlight/Silver kit	109.90
1020	30" Gold/Silver kit	59.90
1030	42" Gold/Silver kit	69.90
1035	52" Gold/Silver kit	99.90

**westcott.**

**WESTCOTT COLLAPSIBLE BACKGROUND STAND**

The sturdy, collapsible Background Stand is made from lightweight aluminum. The design allows the stand to hold a collapsible background off the floor (extends to 120" H) or adjusts so the tripod legs collapse outward allowing the background to come all the way down to the floor. Holds the frame of the background with a clip mechanism.



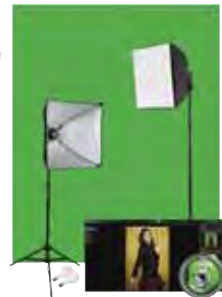
ITEM	DESCRIPTION	PRICE
1103	Background stand	89.90

**westcott.**

**NEW!**

**WESTCOTT ULITE GREEN SCREEN LIGHTING KITS**

These lighting kits setup easy and include the tools needed to do "green screen" effects (superimposing an image onto any backdrop.) Both kits come with lights, softboxes, light stands, photofloods and wrinkle-resistant green screen backdrop; you just need to add your creativity. The Photo Lighting Kit PhotoKey 5 Lite software installs on Mac OS X or Windows and includes free video tutorials and an added bonus of 200 digital backdrops and 20 graphic overlays. The Video Lighting Kit HitFilm 1 Standard software installs on Windows only and offers 2D/3D compositing, film look filters and over 65 effects. Both software packages need internet connection for activation.

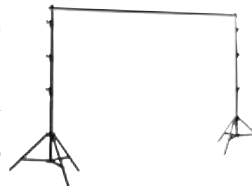


ITEM	DESCRIPTION	PRICE
401-WESTCOTT	Green Screen Photo Lighting Kit, including software	249.90
402-WESTCOTT	Green Screen Video Lighting Kit, including software	249.90



**WESTCOTT BACKGROUND SUPPORT SYSTEM**

The Background Support System uses two 10' H air-cushioned stands with a three-section cross bar that extends up to 10.5". The system also allows



for mounting a second crossbar and background. Includes carry case.

ITEM	DESCRIPTION	PRICE
9014	Background support system	199.90



6768



6770



6772



6771



6767

**WESTCOTT TWO-SIDED BACKDROPS**

Two-sided collapsible background gives the user two color choices in one bag. Includes two straps along the top edge for easy hanging and round, clear PVC carry case. All backgrounds are 6'x7'.

ITEM	DESCRIPTION	PRICE
6771	Rich Mocha/Heavenly Blue	219.90
6767	Smokey Gray/Midnight Blue	219.90
6770	Bracken Brown/April Showers	219.90
6768	Autumn Red/Pearl	219.90
6772	Black/White	219.90



Follow us!

Let us show you exactly what to expect with our lighting design computer modeling and pre-visualization.