

AUDIO



MUSIC



COMPUTER AV



VIDEO



LIGHTS



ACCESSORIES



**CLEARSONIC ACOUSTIC BAFFLES/DRUM SHIELDS** These 0.25" thick acrylic durable ClearSonic panels isolate drums or other instruments. They fold flat for easy storage and transport. Height extenders (12" and 18") are also available.

| ITEM     | DESCRIPTION                                      | PRICE  |
|----------|--|--------|
| A4-1     | 4'x1' 1-section add-on for A4                    | 75.60  |
| A4-3     | 4'x6' 3-section panel                            | 226.80 |
| A4-4     | 4'x8' 4-section panel                            | 302.40 |
| A4-5     | 4'x10' 5-section panel                           | 378.70 |
| A4-6     | 4'x12' high 6-section panel                      | 454.30 |
| A4-7     | 4'x14' 7-section panel                           | 529.90 |
| A5-1     | 5.5'x2' 1-section add-on for A5                  | 105.70 |
| A5-3     | 5.5'x6' 3-section panel                          | 317.10 |
| A5-4     | 5.5'x8' 4-section panel                          | 422.80 |
| A5-5     | 5.5'x10' 5-section panel                         | 528.50 |
| A5-6     | 5.5'x12' 6-section panel                         | 634.20 |
| A5-7     | 5.5'x14' 7-section panel                         | 739.90 |
| AX12-5   | 12" height extension panel, for 5-section panels | 122.50 |
| AX12-6   | 12" height extension panel, for 6-section panels | 147.00 |
| AX12-7   | 12" height extension panel, for 7-section panels | 171.50 |
| T-BASE22 | Base channel support for drum shield             | 12.60  |

**CLEARSONIC SORBER** 1.5" thick compressed fiber-glass inside a heavy Velcro receptive cloth casing. Free-standing models open to 4' wide but fold in half for portability and storage.

| ITEM    | DESCRIPTION  | PRICE  |
|---------|--|--------|
| S2D     | 24"H x 22"W for lower half of clear panel, wall or ceiling with Velcro | 36.26  |
| S4-2D   | 2-panel free-standing, 44"Hx48"W                                       | 129.64 |
| S5-2D   | 2-panel free-standing, 66"Hx48"W                                       | 169.82 |
| SX12-2D | 1'x2' height extenders for S5-2 baffles                                | 68.46  |



**CLEARSONIC PORTABLE CASES**

Portable cases will hold-up to a 7-panel acrylic system. Soft-sided models feature padded lining, handles and zippered pouch for accessories. The CH5 is a hard-sided model made from .098" molded ABS plastic. It can fit up to 7 AX panels and has interior foam padding, zinc-plated steel corners, nylon straps, wheels as well as spring-loaded cushioned handles.

| ITEM | DESCRIPTION                 | PRICE  |
|------|-----------------------------|--------|
| C2   | Zippered case for A2 panels | 89.39  |
| C4   | Zippered case for A4 panels | 112.70 |
| C5   | Zippered case for A5 panels | 136.50 |
| CH5  | A5 panel hard case          | 516.60 |



**CLEARSONIC FLECTOR** Personal monitor disc that mounts behind vocal microphones to reflect direct sound back to the musician, clear modified acrylic.

| ITEM     | DESCRIPTION | PRICE |
|----------|-------------|-------|
| FLECTOR8 | 8" Flector  | 7.00  |



ISOPAC-A

**CLEARSONIC ISOPAC ISOLATION PACKAGES** IsoPacs A and B feature the Lid System, reducing the amount of sound that would normally escape upwards. IsoPacs C and D are for applications where the lid is not necessary, but still feature SORBER absorption baffles to control the reflected sound. ClearSonic panels (CSP) are a reflective sound barrier but do not absorb sound while SORBER is a great sound absorber but not a great barrier. All models are available in your choice of light or dark grey finish.

**ISOPAC-A – DRUM SHIELD KIT**

- Dimensions: 7'W x 9'D x 6.5'H
- Kit contains: (1) A5-7 - 7-section CSP, (3) S5-2L - 4'W x 5.5'H SORBER baffle (rear), (7) AX12 - 12" height extenders, (1) STC5L - 2'W x 5.5'D center lid section, (1) STC512L - 12"W x 5.5'D center lid section, (2) STS5L - 2'W x 5.5'D side lid section, (7) S2L - 22"W x 2'H SORBER baffle, (1) Fan - 6", 2-speed, low-noise fan

| ITEM     | DESCRIPTION  | PRICE   |
|----------|--|---------|
| ISOPAC-A | Drumshield kit with lid system, 50-60% sound reduction | 2066.75 |

**ISOPAC-B – DRUM SHIELD KIT**

- Dimensions: 7'W x 7'D x 6.5'H
- Kit contains: (1) A5-6 - 6-section CSP, (3) S5-2 - 4'W x 5.5'H SORBER baffle (rear), (6) AX12 - 12" height extenders, (1) STC5 - 2'W x 5.5'D center lid section, (2) STS5 - 2'W x 5.5'D side lid section, (4) S2 - 22"W x 2'H SORBER baffle, (1) Fan - 6", 2-speed, low noise fan

| ITEM     | DESCRIPTION   | PRICE   |
|----------|---|---------|
| ISOPAC-B | Drum shield kit with lid system, 50-60% sound reduction | 1732.92 |

**ISOPAC-C – DRUM SHIELD KIT**

- Dimensions: 6'W x 7'D x 5.5'H
  - (1) A5-5 - 5-section CSP, (3) S5-2 - 4'Wx5.5'H SORBER baffle (rear), (5) S2 - 22"W x 2'H SORBER baffle
- Sound reduction not possible to measure w/out lid system

| ITEM     | DESCRIPTION                    | PRICE   |
|----------|--------------------------------|---------|
| ISOPAC-C | Drum shield kit, no lid system | 1219.26 |

**ISOPAC-D – DRUM SHIELD KIT**

- Dimensions: 6'W x 6'D x 4'H
  - Kit contains: (1) A4-5 - 5-section CSP, (2) S4-2L - 4'Wx4'H SORBER baffle (rear), (5) S2L - 22"W x 2'H SORBER baffle
- Sound reduction not possible to measure w/out lid system

| ITEM     | DESCRIPTION                    | PRICE  |
|----------|--------------------------------|--------|
| ISOPAC-D | Drum shield kit, no lid system | 819.28 |

Full Compass also carries IsoPac Vocal Booth Kits. Visit [fullcompass.com](http://fullcompass.com) for details.

**CLEARSONIC CSP-LITE DRUM SHIELD KIT**

This lower-cost 5-panel kit is constructed with five 24"Wx66"Hx3/16"D acrylic panels and is pre-assembled with flexible hinges to fold flat for easy storage. Unlike standard ClearSonic panels, the LITE2466-5 are unfinished "as-cut and square". Note that they are not designed to support ClearSonic's height extenders or LidPac assemblies.



| ITEM       | DESCRIPTION                       | PRICE  |
|------------|-----------------------------------|--------|
| LITE2466-5 | Drum shield kit, 24"Wx66"Hx3/16"D | 350.00 |



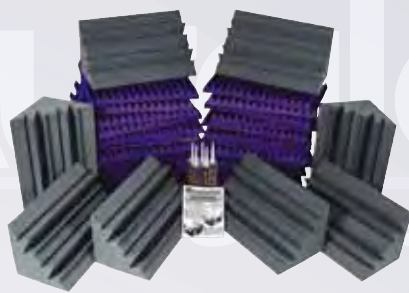
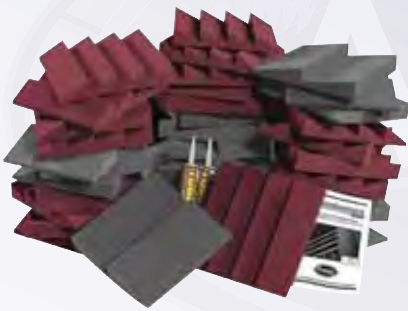
Follow us!

Shop anytime. Buy online. Go to [fullcompass.com](http://fullcompass.com)



**AURALEX ROOMINATOR KITS**

Kits contain Studiofoam Absorbent Wedge Panels to calm early reflections and kill that hollow, ringy room sound. The LENRD Bass Traps (not included in the D36-DST kit) smooth out inaccurate and excessive low frequencies while the T-Fusor Sound Diffusers (Pro Kit only) gives a spacious ambiance and wide sweet spot that big-name studios have.



**D36-DST KIT**

Entry-level system for small rooms (6'x8'x8' or less).

**Kit Includes:**

- (18) DST-112 1'x1' panels (charcoal)
- (18) DST-114 1'x1' wedge panels (various colors)
- (2) Tubetak liquid adhesive

| ITEM       | DESCRIPTION           | PRICE  |
|------------|-----------------------|--------|
| D36CHA/BUR | Charcoal and burgundy | 154.99 |
| D36CHA/CHA | Charcoal only         | 154.99 |
| D36CHA/PUR | Charcoal and purple   | 154.99 |

**PROJECT 2 KIT**

Designed primarily for rooms <100 sq ft.

**Kit Includes:**

- (24) Studiofoam 2'x2'x2" wedge panels (charcoal)
- (8) LENRD Bass Traps (various colors)
- (2) Tubetak liquid adhesive

| ITEM         | DESCRIPTION           | PRICE  |
|--------------|-----------------------|--------|
| PROJ2CHA/BUR | Charcoal and burgundy | 659.99 |
| PROJ2CHA/CHA | Charcoal only         | 659.99 |
| PROJ2CHA/PUR | Charcoal and purple   | 659.99 |

**PRO PLUS KIT KIT**

Designed primarily for rooms 15'x20'x8' or smaller.

**Kit Includes:**

- (36) Studiofoam 2'x2'x2" wedge panels (charcoal)
- (12) LENRD Bass Traps (various colors)
- (8) T-Fusor 3D Sound Diffusers
- (3) Tubetak liquid adhesive

| ITEM           | DESCRIPTION           | PRICE   |
|----------------|-----------------------|---------|
| PROPLUSCHA/BUR | Charcoal and burgundy | 1319.99 |
| PROPLUSCHA/CHA | Charcoal and charcoal | 1319.99 |
| PROPLUSCHA/PUR | Charcoal and purple   | 1319.99 |



**AURALEX LENRD BASS TRAPS**

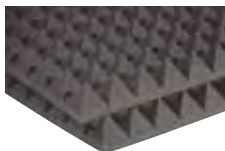
LENRD (Low End Node Reduction Device) Bass Traps are triangular-shaped, irregularly wedge-cut pieces of Studiofoam that give superior broadband absorption, especially at low frequencies. They fit room corners & wall/ceiling junctures perfectly and are the easiest and most cost-effective way to control excess low frequency energy without sacrificing large amounts of cubic space. Noise reduction coefficient (NRC) is 1.35. (Recommended adhesive: 1 Foamtak or 2 Tubetak per eight units. Sold separately.)



| ITEM      | DESCRIPTION                  | PRICE  |
|-----------|------------------------------|--------|
| LENBLU    | Bass trap, blue, 8-pack      | 329.99 |
| LENBUR    | Bass trap, burgundy          | 38.75  |
| LENBUR-HP | Bass traps, burgundy, 4-pack | 154.99 |
| LENCHA    | Bass trap, charcoal          | 38.75  |
| LENCHA-HP | Bass traps, charcoal, 4-pack | 154.99 |
| LENPUR    | Bass trap, purple            | 38.75  |
| LENPUR-HP | Bass traps, purple, 4-pack   | 154.99 |

**AURALEX STUDIOFOAM® PYRAMIDS**

A perfect combination of good looks and great sound, giving a cool look to your studio. Pyramids offer tons of versatility, provide virtually seamless installations, supply a bit of extra diffusion due to their 4-sided geometry.

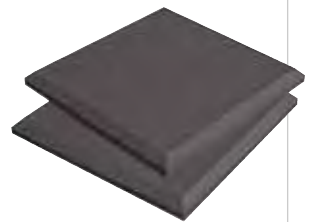


Available in multiple colors, substitute the last 3 letters of the part number for color (CHA = charcoal, BUR = burgundy, PUR = purple. Other colors available for some models, call a sales pro for more information. Prices listed are for charcoal models, a small upcharge is added for alternate colors.)

| ITEM               | DESCRIPTION                          | PRICE  |
|--------------------|--------------------------------------|--------|
| 2PYR24XXX          | 2'x4'x2" Pyramid Studiofoam          | 439.99 |
| 4PYR24XXX          | 2'x4'x4" Pyramid Studiofoam          | 444.99 |
| 2PYR22XXX          | 2'x2'x2" Pyramid Studiofoam          | 16.70  |
| 4PYR22XXX          | 2'x2'x4" Pyramid Studiofoam          | 37.50  |
| FOAMTAK-SINGLE     | Spray adhesive, 96 sq. ft. coverage  | 24.99  |
| TUBETAK-PRO-SINGLE | Liquid adhesive, 32 sq. ft. coverage | 9.99   |

**AURALEX STUDIOFOAM® PRO CLASS 'A' ACOUSTICAL FOAM**

The first melamine-free acoustical foam with a Class 'A' fire rating. Even though its profile is 1.5" thick, it offers a higher noise reduction coefficient (NRC = .90) than 2" Studiofoam Wedges. It will not rot, crumble or suffer surface harm from normal use. Available in 2'x2' and 2'x4' charcoal grey panels. Features beveled edges similar to SonoFlat and ELiTE Pro Panels.



| ITEM       | DESCRIPTION                                    | PRICE  |
|------------|--|--------|
| 15SFP24CHA | (10) 2'x2' StudiofoamPro, 1.5" thick, charcoal | 274.99 |
| 15SFP48CHA | (10) 2'x4' StudiofoamPro, 1.5" thick, charcoal | 549.99 |

**AURALEX STUDIOFOAM® WEDGE FOAM**

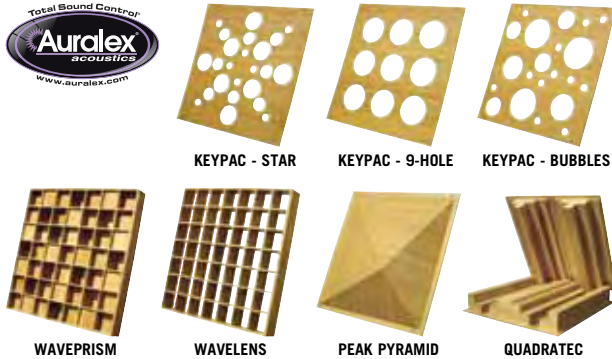
Has triangular horizontal cuts and treats most small to medium sized areas including vocal booths, control rooms and studios. An industry workhorse. Overall NRC = .80, and comes in various colors. Wedgies™ are 1'x1' panels and come in 2" only.



Available in multiple colors, substitute the last 3 letters of the part number for color (CHA = charcoal, BUR = burgundy, PUR = purple. Other colors available for some models, call a sales pro for more information. Prices listed are for charcoal models, a small upcharge is added for alternate colors.)

| ITEM               | DESCRIPTION                          | PRICE  |
|--------------------|--------------------------------------|--------|
| 2SF24XXX           | (12) 2" Studiofoam, 2'x4'            | 399.99 |
| 3SF24XXX           | (8) 3" Studiofoam, 2'x4'             | 399.99 |
| 4SF24XXX           | (6) 4" Studiofoam, 2'x4'             | 399.99 |
| 2SF22XXX           | (12) 2" Studiofoam, 2'x2'            | 16.67  |
| 4SF22XXX           | (12) 4" Studiofoam, 2'x2'            | 33.33  |
| FOAMTAK-SINGLE     | Spray adhesive, 96 sq. ft. coverage  | 24.99  |
| TUBETAK-PRO-SINGLE | Liquid adhesive, 32 sq. ft. coverage | 9.99   |
| WEDGIES            | (24) 2" foam wedges, 1'x1'           | 4.50   |





**AURALEX SUSTAIN BAMBOO SOUND DIFFUSORS** This new line of bamboo diffusers are designed to accommodate each room's unique acoustical needs. Improve the overall sound and "liveliness" of your room with the sonic warmth of these sustainable diffusers. The Peak Pyramid panel provides high quality diffusion while doubling as an effective bass trap. The QuadraTec panels provide excellent scattering properties, resulting in a warm, musical character to the dispersed sound. The WavePrism eliminates flutter echoes and other anomalies without removing acoustical energy from the space. The WaveLens scatters and redirects acoustical energy while the KeyPacks tune your absorption treatment to be more effective in the low and mid range while not killing off higher frequencies – yielding a room that is well balanced across the frequency range.

| ITEM   | DESCRIPTION   | PRICE   |
|--------|---|---------|
| WA2    | WavePrism, 2-pack, 23.75"x23.75"x3"                 | 682.50  |
| WC2    | WaveLens, 2-pack, 23.75"x23.75"x3"                  | 498.75  |
| WAVE6  | WaveLens, 6-pack, 23.75"x23.75"x3"                  | 1153.95 |
| PPD4   | Peak Pyramid, 2-pack, 23.75"x23.75"x6"              | 628.95  |
| QTQRD2 | QuadraTec, 2-pack, 23.75"x23.75"x4.1"               | 712.95  |
| KPS4   | KeyPac, star pattern, 4-pack, 21.5"x 21.5"x0.625"   | 393.75  |
| KP9H4  | KeyPac, 9-hole pattern, 4-pack, 21.5"x 21.5"x0.625" | 393.75  |
| KPB4   | KeyPac, bubble pattern, 4-pack, 21.5"x 21.5"x0.625" | 393.75  |

**AURALEX GRAMMA SOUND ISOLATION AMP RISERS**

Gig and Recording Amplifier and Monitor Modulation Attenuator. The Gramma sound isolation riser is an incredibly effective device used to float an amp or loudspeaker and yields nearly total acoustic sound isolation. They come complete with a carrying handle, road-ready carpet, Studiofoam Wedges and PlatFoam. The Great Gramma is a larger design intended for guitar cabinets or similar sized speakers and subs.



| ITEM          | DESCRIPTION              | PRICE  |
|---------------|--------------------------|--------|
| GRAMMA-4PACK  | 15"x26" platform, 4-pack | 219.96 |
| GRAMMA-SINGLE | 15"x23" platform, single | 54.99  |
| GREAT-GRAMMA  | 19"x30" platform, single | 84.99  |

**AURALEX ADHESIVES** Use these adhesives to affix acoustic foam panels or diffusers to your walls. Tubetak Pro provides a permanent bond and is easily applied from the tube with a standard caulking gun. One tube mounts about 32 square feet of foam or diffusers. Foamtak can be applied lightly so that foam is removable, or applied heavily for a permanent bond. One can mounts about 96 square feet of foam or diffusers.



| ITEM               | DESCRIPTION                          | PRICE |
|--------------------|--------------------------------------|-------|
| TUBETAK-PRO-SINGLE | Permanent adhesive, tube             | 9.99  |
| FOAMTAK-SINGLE     | Semi-permanent adhesive, aerosol can | 24.99 |

**AURALEX STOPGAP ACOUSTICAL SEALANT** This highly elastic, water-based sealant is used for reducing sound transmission at the perimeter of wall systems or around electrical box cutouts to achieve specified STC/MTC values. The surface dries to a tough film but the sealant remains flexible and stays pliable for up to 5 times longer than alternative brands. It has no residual run-off, is paintable and non-staining, and meets ASTM C-834 standards for flame retardancy. Coverage per 29 oz. cartridge is approximately 40 linear feet with a 3/8" bead applied.



| ITEM    | DESCRIPTION                         | PRICE |
|---------|-------------------------------------|-------|
| STOPGAP | Acoustical sealant, 29oz, cartridge | 19.99 |

**AURALEX PROPAD™ MONITOR ISOLATORS**

Extremely useful for decoupling monitors and reducing structural vibrations. They feature a durable, 3-layer and highly-damped construction, a slip-resistant ISO-Plate top, and an additional PlatFoam™ wedge for angled applications. ProPAD work with most standard-sized near-field monitors with 5.25", 6.5" or 8" woofers. ProPAD XL is for larger twin woofer monitors up to 19" wide.



| ITEM      | DESCRIPTION                              | PRICE  |
|-----------|--|--------|
| PROPAD    | Monitor isolators, up to 8" wide (pair)  | 99.99  |
| PROPAD-XL | Monitor isolators, up to 19" wide (pair) | 199.99 |

**AURALEX U-BOAT FLOOR FLOATERS**

These proprietary U-Boat floaters are made of a specially formulated rubber compound. These U channels are used to support framing members and float (isolate and decouple) them from the surrounding structure. With the help of U-Boats, a floated room features greatly improved transmission loss (isolation) and low-frequency definition. Each channel is 2 1/8" W x 1 1/2" H x 2" D, and are 5/16" thick on the sides, & 1/2" thick at the base.



| ITEM         | DESCRIPTION                  | PRICE |
|--------------|------------------------------|-------|
| UBOAT-SINGLE | U-boat floater, black (each) | 2.49  |



**AURALEX HOVERDECK™ ISOLATION RISERS** The HoverDeck™ is specifically engineered to reduce coloration from floor resonance by decoupling the drum kit from the structure, resulting in a tighter, more pure sound for both studio and FOH. It has a rugged MDF laminate core and web-like ISO-Puck modular riser to minimize structure-borne sound transmission and vibrations between drums and hardware. Available in two versions, both systems utilize a set of low-profile isolating boards that assemble quickly via a strategically placed hook & loop fastener.

| ITEM  | DESCRIPTION  | PRICE  |
|-------|--|--------|
| HD64G | HD64 gig set (for 4-5 piece drum kits) – 6 HD22 platforms (23-3/4"x23-3/4"x1") & 1 HD-tc platform (23-3/4"x31-3/4"x1") | 424.99 |
| HD88C | HD88 concert (for larger/touring drum kits) – 12 HD-tc platforms (23-3/4"x31-3/4"x1")                                  | 949.99 |

**AURALEX SHEETBLOK™ SOUND BARRIER**

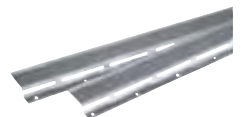
SheetBlok Sound Isolation Barrier is a dense, limp-mass vinyl material that is about 6dB more effective than solid lead at stopping the transmission of sound. It acts as a thin, dense sound barrier layer in walls, ceilings or floors and is most effective when used as one component of a multi-layered construction scheme. It helps in decoupling (i.e. floating) floors and walls and is paintable with latex paint. SheetBlok-Plus comes with a PSA (pressure-sensitive adhesive) already attached.



| ITEM     | DESCRIPTION                                       | PRICE  |
|----------|---|--------|
| J-10SHBL | Sound barrier, 4'x10'x1/8"                        | 249.99 |
| J-30SHBL | Sound barrier, 4'x30'x1/8"                        | 424.99 |
| PLSHBL30 | Sound barrier, 4'x30'x1/8" with adhesive attached | 599.99 |

**AURALEX RC-8 RESILIENT CHANNEL**

Auralex's RC-8 Resilient Channel is a specially-formed, sturdy metal device that, when used to hang drywall (instead of just attaching the drywall to the studs or joists), greatly improves the sound transmission characteristics of the wall or ceiling system. RC-8 is available in handy 8' lengths that are ground shippable.



| ITEM            | DESCRIPTION            | PRICE  |
|-----------------|------------------------|--------|
| RC8-RES-CHANNEL | 8 ft channels, 24-pack | 189.99 |



Follow us!

PRICES SUBJECT TO CHANGE WITHOUT NOTICE. Call today or visit us online!



**NEW!**

**AURALEX PROGO** This portable lightweight baffle minimizes sound leakage between instruments, amps and vocalists. The 2'x6'x8" ProGo rests in the included floorstand and is easily moved to accommodate any setup. Choose from 12 standard fabrics colors.

| ITEM    | DESCRIPTION                                       | PRICE  |
|---------|---|--------|
| PROGOST | Portable freestanding acoustical panel, SandStone | 499.99 |



**AURALEX STAND-MOUNTED PANELS** ProMAX™ is set of stand-mounted absorption panels that includes a pair of 2'x4'x3" charcoal panels with (2) MAX-Stands mounts. The smaller DeskMAX™ is a portable desktop solution and includes a pair of 2'x2'x3" panels which mount using the 2 included desktop stands.

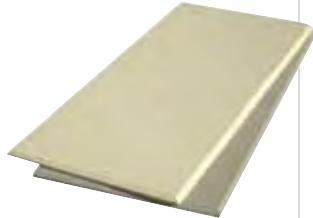
| ITEM    | DESCRIPTION                                   | PRICE  |
|---------|---|--------|
| PROMAX  | Acoustic panels, free-standing, charcoal grey | 289.99 |
| DESKMAX | Acoustic panels, desktop, charcoal grey       | 179.99 |



**AURALEX ELITE B24™ PROPANELS™**

These are decorative, fabric-wrapped absorptive panels that meet Class 'A' fire ratings per ASTM-E84 standards. The 1" thick, 2'x4' beveled-edge panels have a 0.8 Noise Reduction Coefficient (NRC), making them the perfect choice for absorbing slap and flutter echo in applications such as schools, gymnasiums, theaters, houses of worship, board rooms or recording and broadcast studios. Includes wall-mounting 'I'-clips.

| ITEM    | DESCRIPTION                      | PRICE  |
|---------|----------------------------------|--------|
| B24SAND | ProPanel, sandstone color (each) | 104.99 |
| B24OBS  | ProPanel, obsidian color (each)  | 104.99 |



**AURALEX DIFFUSORS** MetroFusor™ is made from high quality EPS (expanded polystyrene), and features a distinctive, proprietary surface contour. T'Fusors™ and QuadFusor™ drop easily into ceiling grids and are wall mountable with pushpins, staples, nails, Tubetack, Velcro or 2-sided tape. Improved broadband diffusion can be achieved by filling the cavity in the back of the T-Fusor with acoustic foam or 1" rigid fiberglass. The DST-R Reflector kit consists of (36) 12"x12"x1" diffusors. Their 1" depth makes them ideal for areas where space is tight. The MiniFusor™ is a 12"x12"x5" diffusor made of thermoplastic resin with an inner cavity which can be filled for better diffusion and low-frequency trapping. All diffusors are white and can be easily painted with water-based paints.



| ITEM           | DESCRIPTION                       | PRICE  |
|----------------|-----------------------------------|--------|
| METRODIFF      | 24"x24"x2" white diffusor         | 19.17  |
| TFUSOR         | 23.75"x23.75"x5.5" white diffusor | 64.99  |
| QUADFUSOR      | 2'X2'X4.5" white diffusor         | 99.99  |
| DST-RKIT       | (36) 12"x12"x1" white diffusors   | 104.99 |
| MINIFUSOR-EACH | 12"x12"x5" diffusor               | 9.99   |

**AURALEX MINERAL FIBER SOUND INSULATION**

Very dense and designed for acoustical usage, mineral fiber has much better bass trapping, overall absorption, thermal characteristics, moisture absorption and isolation than standard fiberglass. Use mineral fiber insulation in walls or between floor joists for enhanced sound transmission loss. It features a Class 'A' flame retardancy with 1200°F burn point.



| ITEM  | DESCRIPTION                         | PRICE  |
|-------|-------------------------------------|--------|
| 2MF24 | 6 sound insulation panels, 2'x4'x2" | 124.99 |
| 4MF24 | 3 sound insulation panels, 2'x4'x4" | 124.99 |



**PRIMAACOUSTIC FLEXIBOOTH VOICE-OVER BOOTH** The 48"x48" wall-mounted fiberglass FlexiBooth™ opens like a cupboard to create a 16 cubic foot "voice-over zone" that eliminates room ambience. Ideal for voiceovers, vocal tracking, and podcasting, it absorbs sound energy through the voice range. Multiple FlexiBooths can be placed in a room and customized to reflect various acoustic environments. Doubles as a bass trap when closed and can be cleat mounted to any wall surface.



| ITEM        | DESCRIPTION  | PRICE  |
|-------------|--|--------|
| FLEXI-BOOTH | Dual-purpose vocal booth/bass trap, 2" thick main panels, 1" thick door panels | 449.99 |

**PRIMAACOUSTIC FLEXIFUSER VARIABLE PITCH DIFFUSER** Ideal for recording studios, broadcast stations and home theaters, the pitch diffuser deflects sound energy to create a greater sense of air and space. It mounts at receive end of room, diffusing directional acoustic energy. It also reduces standing waves and flutter echo from 500Hz and up. 6 variable pitch slats can be rotated to tailor the diffuser's sound deflection. The rear-mounted absorptive panel behind the diffuser's slats further reduces room reflections. Various patterns can be combined in clusters for maximum effect. Ships flat to reduce freight costs and assembles in minutes using standard household tools.



| ITEM        | DESCRIPTION  | PRICE  |
|-------------|--|--------|
| FLEXI-FUSOR | Variable pitch diffuser with rotating slats, 48"Hx24"Wx6"D | 399.99 |

**PRIMAACOUSTIC GOTRAP** The GoTrap™ is a combination studio gobo and bass trap that controls spill between instruments recording simultaneously and passively removes excess bass in the room (down to 75Hz). GoTraps are comprised of high-density, fabric-covered 6 lbs/ft<sup>3</sup> sound absorbing panels, an 8" D internal cavity, and internal fiberboard barriers that contain sounds and enhance bass absorption.



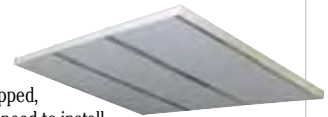
| ITEM    | DESCRIPTION  | PRICE  |
|---------|--|--------|
| GO-TRAP | 24"x36" birch studio gobo and bass absorber, select black/beige/grey panel color | 399.99 |

**PRIMAACOUSTIC MAXTRAP BROADBAND CORNER BASS TRAP** This combination 3-way broadband corner trap consists of a high-density fiberglass panel with a resonator membrane. It's easy to assemble (24"x48" flat-pack wood frame) and its unobtrusive design fits any décor. Effective from 65Hz and up.



| ITEM     | DESCRIPTION                                  | PRICE  |
|----------|--|--------|
| MAX-TRAP | 24"x48" broadband corner acoustical absorber | 399.99 |

**PRIMAACOUSTIC MODULAR ACOUSTIC CLOUD SYSTEM** Suspended over the console or listening position, this fabric-wrapped, high-density fiberglass panel eliminates the need to install floor-to-ceiling reflectors and comes with easy-to-assemble suspension hardware. Its unobtrusive design fits any décor and is available in beige, black and grey.



| ITEM    | DESCRIPTION                             | PRICE  |
|---------|---|--------|
| STRATUS | 24"Hx48"Wx2"D overhead panel with frame | 199.99 |

**PRIMAACOUSTIC CUMULUS BROADBAND CEILING CORNER TRAP** These triangular focal point traps mount in corners and is highly effective in small rooms due to sound migration, providing absorption upwards of 125Hz. Their unobtrusive design fits any décor and they are quick and easy to mount.



| ITEM    | DESCRIPTION                   | PRICE  |
|---------|-------------------------------|--------|
| CUMULUS | Two 24" triangle corner traps | 119.99 |



AUDIO



## PRIMAACOUSTIC BROADWAY LONDON SERIES ACOUSTICAL TREATMENT KITS

The London room kits provide a balanced solution that deals with both room reflections and problem frequencies. The panels are modular and can be easily distributed to meet a multitude of room configurations and be adapted as a starting point for larger rooms or more demanding applications. The kits consist of high-density 6 lb.-per-cubic-foot fiberglass panels, which are 5 times more absorbent than 1.3 lb. foam, resulting in fewer panels altogether. They are Class 1 fire rated for safe installations anywhere. No glue needed. Installation is clean and easy. Available with black, grey or beige panels.



### LONDON 8

The Primaacoustic London 8 is the perfect "studio in a box" for those that have small rooms but plan on growing. For rooms under 100 sq ft.

**Kit Includes:**

- (4) 12"x36"x2" panels
- (8) 12"x12"x1" panels
- (20) surface impaler clips

|                |              |
|----------------|--------------|
| <b>ITEM</b>    | <b>PRICE</b> |
| LONDON-8 ..... | 199.99       |



### LONDON 12

A Live-End/Dead-End kit for rooms with a square footage of about 120 sq. ft.

**Kit Includes:**

- (2) 24"x48"x2" panels
- (8) 12"x48"x2" panels
- (12) 12"x12"x1" panels
- (28) surface impaler clips
- (8) corner impaler clips

|                 |              |
|-----------------|--------------|
| <b>ITEM</b>     | <b>PRICE</b> |
| LONDON-12 ..... | 749.99       |



### LONDON 16

When maximum absorption and accuracy are required. For rooms 150 sq ft or larger.

**Kit Includes:**

- (6) 24"x48"x2" panels
- (12) 12"x48"x2" panels
- (24) 12"x12"x1" panels
- (48) surface impaler clips
- (16) corner impaler clips

|                 |              |
|-----------------|--------------|
| <b>ITEM</b>     | <b>PRICE</b> |
| LONDON-16 ..... | 1499.99      |



### PRIMAACOUSTIC ACOUSTIC LANTERNS™ HANGING BAFFLES

A series of innovative ceiling baffles designed for architecturally demanding environments. There are 4 models to choose from, The Dragon™ is hexagonal, The Shoji™ is square, The Tiki™ is triangular and The Fiesta™ is cylindrical. Each one measures 24" long and averages 8" in diameter. They are constructed of high density 6 lb glass wool, surrounded with micromesh and wrapped in a resilient polyester yarn that is durable and easy to clean. They are ASTM E 84 tested to meet Class 'A' designation for fire and smoke development. Ideally suited for rooms with higher ceilings, they are generally suspended in clusters. Each design is available in black, grey or beige.

| ITEM               | DESCRIPTION  | PRICE  |
|--------------------|--|--------|
| P220-0115-00 ..... | Dragon hanging baffle (hexagonal), select color..... | 250.25 |
| P220-0105-00 ..... | Shoji hanging baffle (square), select color.....     | 250.25 |
| P220-0110-00 ..... | Tiki hanging baffle (triangular), select color.....  | 250.25 |
| P220-0100-00 ..... | Fiesta hanging baffle (round), select color .....    | 250.25 |



### RPG SKYLINE TWO-DIMENSIONAL PRIMITIVE

**ROOT DIFFUSOR** Skyline is an omni-directional primitive root number theory 2-dimensional diffuser. It scatters incident sound uniformly so that the acoustic glare in all directions is minimized. This is especially useful for small rooms, where surfaces are relatively close to the listener and a very efficient diffusing surface is needed.



|               |                                    |              |
|---------------|------------------------------------|--------------|
| <b>ITEM</b>   | <b>DESCRIPTION</b>                 | <b>PRICE</b> |
| SKYLINE ..... | 2 diffusers, 2'x2'x8", white ..... | 354.17       |

### RPG FLATFUSOR PANELS

The Flatfusor™ provides uniform sound diffusion at high and mid band frequencies and crosses over to pure absorption below the diffusive cutoff. The energy that is not diffused is absorbed. This panel extends the acoustical performance of traditional absorptive fabric wrapped panels, allows wide area coverage without excessive deadening, and offers an alternative to RPG's line of traditional phase grating diffusers. Sold in boxes of two.



|                   |                                     |              |
|-------------------|-------------------------------------|--------------|
| <b>ITEM</b>       | <b>DESCRIPTION</b>                  | <b>PRICE</b> |
| FLAT1-298-2 ..... | (2) Diffusers, 2'x2'x1", gray ..... | 184.37       |
| FLAT1-298-4 ..... | (2) Diffusers, 4'x2'x1", gray ..... | 368.74       |



Follow us!

Para asistencia en Español llame al 800-356-5844 x1164 y x1178