



**ATLAS SOUND SD/GD CEILING SPEAKERS** 8" ceiling speakers with 70V transformers built-in and optional white circular ceiling grills. For extended high frequency response the SD uses a dual cone design (wizzer cone), the GD has a co-axial tweeter and crossover built-in.

ITEM	DESCRIPTION	PRICE
SD72W	SD72 with white grille	22.50
SD72WV	SD72W with center mounted volume control	28.50
GD87	8" coaxial w/8W transformer, 60Hz-20kHz	32.50
GD87W	GD87 with white grille	37.50



**ATLAS SOUND STRATEGY-II CEILING SPEAKERS** Ceiling speakers with built-in enclosures, ported and tuned for optimal response and dispersion. Grille and C-Ring/V-Rail mounting hardware are all included. Features include front mounted tap selector, "Phoenix" connector, extended low response. All of the FAP speakers are 8ohms/70V.

ITEM	DESCRIPTION	PRICE
FAP42T	4" 16W 70/100V 65Hz-20kHz	75.50
FAP62T	6" 60W 70/100V 55Hz-20kHz	90.50
FAP40T	4" T7/16W	52.50
FAP82T	8" 2-way	140.50
FAPSUB	8" 60W 70/100V subwoofer 45Hz-120Hz	185.50



**ATLAS SOUND MONO 70 VOLT ATTENUATORS** Mounted on standard stainless steel wall plates. All feature 10-step switches with an 11th positive off position. Single gang plates.

ITEM	WATTS	PLATE SIZE	INSERT LOSS	PRICE
AT10	10	1-gang	0.4dB	16.50
AT35	35	1-gang	0.6dB	19.50
AT100	75	1-gang	0.6dB	24.50
AT100	10	1-gang	0.4dB	17.50
AT35D	35	1-gang	0.6dB	20.50
AT100D	100	1-gang	0.6dB	25.50
AT10-RM	10	Rackmount	0.4dB	16.50
AT35-RM	35	Rackmount	0.4dB	17.50
AT100-RM	100	Rackmount	0.4dB	23.50



**ATLAS SOUND 80HM STEREO ATTENUATORS** Stereo 10-step attenuators reduce insertion loss and incorporate automatic load protection, enabling a single amplifier to power multiple speakers. Single gang plates. The DWS-8 adds an on/off switch, and requires a 12VDC power supply.

ITEM	DESCRIPTION	WATTS/CHANNEL	COLOR	PRICE
MUSICAVC-50Z		50	Decora White	45.62
DWS-8I		50	Decora Ivory	70.50
Accessories				
PS-M12	Powers up to 3 DWS-8 units			14.46

#### ATLAS SOUND OPTIONS FOR CEILING SPEAKERS

ITEM	DESCRIPTION	PRICE
<b>Ceiling Baffles (grilles)</b>		
51-4	4" round white steel screw-type baffle	9.50
51-8	8" round white steel screw-type baffle	7.50
60-8W	8" round aluminum screw-type baffle, textured white finish	12.50
60-8A	8" round aluminum screw-type baffle, satin aluminum finish	13.50
P900	8" round white plastic baffle	7.50
61-8W	8" decorative round white steel screw-type baffle	16.50
62-8	8" round white CRS screw-type baffle	10.50
M222W	8" contoured round aluminum screw-type baffle, textured white finish	12.50
61-12W	12" decorative round white steel screw-type baffle	45.50
<b>Tile Bridge</b>		
81-8S	2'x4' tile bridge for round and square enclosures/baffles	12.50
<b>Back Boxes</b>		
CS95-8	Round conical enclosure with straps for 8" speakers (matches 81-8S tile bridge and round baffles listed above)	9.50
96-8-7	High performance enclosure for 8" speakers (matches 81-8S tile bridge and round baffles listed above)	28.50



#### ATLAS SOUND DT12 CEILING SPEAKER PACKAGE

This 1'x2' drop in ceiling speaker combines easy installation with high intelligibility for speech and music reproduction. The E.O. box (with cover) is positioned on the side of the conical enclosure to aid in either rigid or flexible conduit. The external tap selector switch allows easy system tuning. The speaker is a 10oz, 8", dual cone with 25V/70.7V transformer or 8ohm operation via a bypass setting. Features a frequency response of 85Hz-8kHz and a dispersion of 105°.

ITEM	DESCRIPTION	PRICE
DT12	1'x2' ceiling speaker, drop-in with metal grille	62.50



#### ATLAS SOUND SBMS BEAM CLAMP SPEAKER

The SBMS beam clamp speaker is ideal for "big box" retail stores whose special design calls for open beam ceilings. This easy-to-install loudspeaker package includes provisions for fast clamp-mount installation to I-beams or girders. The package includes an 8" dual-cone loudspeaker with a pre-mounted xfmr, baffle and enclosure with clamp mounts. Convenient wire lead extensions assure expedited field connection. Durable white powder coat finish.

ITEM	DESCRIPTION	PRICE
SBMS	Beam clamp speaker	55.50



#### ATLAS SOUND SM SERIES SURFACE MOUNT SPEAKERS

All-weather surface-mount speakers. Features efficient woofers and titanium dome high frequency drivers, the SM52T has a dome tweeter, the SM82T a 1" compression driver. The SM52T has 90x90 degree coverage, the SM82T, 65x65-degree coverage. U-Brackets are included. SM52T is priced each, only available in pairs.

ITEM	DESCRIPTION	PRICE
SM42T-BLACK	4" speaker 70V/8-ohm selectable	59.50
SM42T-WHITE	4" speaker 70V/8-ohm selectable	59.50
SM52T-BLACK	5.25" 2-way, 8-ohm, 100W, 95Hz-20kHz, 70V transformer, 30W	131.50
SM52T-WH	5.25" 2-way, 8-ohm, 100W, 95Hz-20kHz, 70V transformer, 30W	131.50
SM82T-BLACK	8" 2-way, 8-ohm, 150W, 65Hz-20kHz, 70V transformer, 60W	244.50
SM82T-WHITE	8" 2-way, 8-ohm, 150W, 65Hz-20kHz, 70V transformer, 60W	244.50



## AUDICA

NEW!

**AUDICA MICROSERIES SYSTEM** The MICROseries system is a DSP controlled audio system with ultra-compact loudspeakers. MICROzone is a 5-configuration amplifier/controller that provides flexibility for single or multi-location input and control. The MICROseries system offers the options of 2 wall-mount and one ceiling-mount loudspeaker as well as an active subwoofer. The MICROdot ceiling speaker offers high quality audio over a wide band with the smallest possible footprint. MICROpoint includes and integrated wall bracket allowing 360 degrees rotation, 120 degrees of pan, and 70 degrees of tilt. This 2 way speaker rates at 4 ohms and 35W power handling. MICROline offers the same flexibility but in an 8 ohm 4 speaker line array with 50W power handling. Add more low end to the system with the 100W powered MICROsub which can be free standing or mounted to the wall or ceiling.

ITEM	DESCRIPTION	PRICE
MICRO-ZONE	Amplifier/controller, 2x30W	CALL
MICRO-PLUS	Amplifier, 4x80W	CALL
MICRO-DOT	Passive ceiling speaker (pair)	CALL
MICRO-POINT	On-wall speaker, black or white finish (each)	CALL
MICRO-LINE	On-wall array, black or white finish (each)	CALL
MICRO-SUB	Active subwoofer, 100W	CALL





## BOSE

**BOSE FREESPACE® DS LOUDSPEAKERS** FreeSpace® loudspeakers are engineered with patented and proprietary technologies to meet the demands of business applications. Music is reproduced with depth and detail, to help create an environment that enhances the customer's experience, giving your business a competitive edge. Pages and announcements can be heard clearly throughout the listening area. FreeSpace® systems operate reliably throughout the day, every day. All speakers can be used in either 70V/100V or 8ohm systems. Models come in black or white but may be painted to match any ceiling. *Please visit [fullcompass.com](http://fullcompass.com) for Tile Bridges, and other available accessories.*

### BOSE® FREESPACE® DS 16F SERIES

Commercial install speakers with 2.25" full range drivers, rated at 16W, that blend into ceilings. Comes standard as flushmount but may be suspended from open ceilings with an accessory pendant mount kit. Speaker enclosure fits standard 8" hole for ceilings but may be retrofitted with optional kit for 8" to 12" holes as well. Frequency response is 90Hz-16kHz  $\pm$ 3dB. Speakers may be tapped at 1W, 2W, 4W, 8W, or 16W for flexible installation.



ITEM	DESCRIPTION	PRICE
DS-16F-BLACK	Flushmount speaker w/2.25" driver, black	.....CALL
DS-16F-WHITE	As above but in white	.....CALL

### BOSE® FREESPACE® DS 100F SERIES

These 100W loudspeakers allow you to use fewer loudspeakers to create even coverage due to their high output and even dispersion. Features one 2.25" Twiddler® driver and one 5 1/4" woofer. Frequency response is 65Hz-16 kHz  $\pm$ 3dB. Speakers may be tapped at 12.5W, 25W, 50W or 100W for flexible installation.



ITEM	DESCRIPTION	PRICE
DS-100F-BLACK	Flushmount speaker w/5.25" woofer and two 2.25" drivers in articulated array, black	.....CALL
DS-100F-WHITE	As above but in white	.....CALL

### BOSE® FREESPACE® DS 40F SERIES

These 40W loudspeakers are engineered for installation in ceilings up to 26" high and are suitable for use in air handling (plenum) spaces. They feature a single 4.5" full-range driver. Frequency response is 80Hz-16kHz  $\pm$ 3dB. Speakers may be tapped at 2.5W, 5W, 10W, 20W, 40W for flexible installation.



ITEM	DESCRIPTION	PRICE
DS-40F-BLACK	Flushmount speaker w/4.5" driver, black	.....CALL
DS-40F-WHITE	As above but in white	.....CALL

## Community



**COMMUNITY I/O SERIES SURFACE MOUNT LOUDSPEAKERS** Indoor/Outdoor high-performance surface-mount loudspeakers suitable for all types of applications. Features compact injection molded cabinet, 90°x50° dispersion, binding post inputs for easy and secure terminations, polypropylene LF cones for all-weather use, and powder-coated steel grille. Infin-A-Ball mounting bracket included with each speaker. Units are sold in pairs.

ITEM	DESCRIPTION	PRICE
I/O5B-PR	5" 2-way speaker, 30W RMS @ 8ohms, 85Hz-18kHz, black	228.00
I/O5W-PR	2-way speaker, 30W RMS @ 8ohms, 85Hz-18kHz, white	228.00
I/O5BT-PR	70V transformer equipped version of I/O-5B, 3 tap settings	245.00
I/O5WT-PR	70V transformer equipped version of I/O-5W, 3 tap settings	245.00
I/O8B-PR	8" 2-way speaker, 60W RMS @ 8ohms, 65Hz-18kHz, black	345.00
I/O8W-PR	2-way speaker, 60W RMS @ 8ohms, 65Hz-18kHz, white	345.00
I/O8BT-PR	70V transformer equipped version of I/O-8B, 3 tap settings	365.00
I/O8WT-PR	70V transformer equipped version of I/O-8W, 3 tap settings	365.00



### EV EVID CEILING SPEAKERS

Either 70V/100V or 8-ohm operation is standard on every model, and they are also acoustically matched to the EVID surface mount speaker line. The EVID Ceiling Speaker line will solve any installation challenge, plus all installation accessories commonly needed for most jobs are included.



ITEM	DESCRIPTION	PRICE
C4.2	4" coaxial speaker with horn-loaded Ti coated tweeter (pair)	242.00
C8.2	8" coaxial speaker with horn-loaded Ti coated tweeter (pair)	335.00
C8.2HC	8" waveguide coupled coaxial speaker with horn loaded Ti coated tweeter (pair)	469.00
C8.2LP	8" coaxial shallow mounting depth (pair)	335.00
C10.1	10" high performance subwoofer (pair)	443.00

### EV EVID FLUSHMOUNT IN-WALL SPEAKERS

Featuring fully sealed enclosures to provide superior isolation from adjacent rooms, both models incorporate a passive radiator for extended low frequencies. Ribbed back design eliminates flexing and ensures all acoustic energy gets transferred to the passive radiator. Either 70V/100V or 8-ohm operation is standard. Secure Phoenix-style pass through connectors for easy wiring and installation.



ITEM	DESCRIPTION	PRICE
FM4.2-EVID	4" 2-way, titanium-coated tweeter, 3.5" deep, 70V taps: 1.75, 3.75, 7.5, 15, or 30W, 70Hz-20kHz, 4-pin Phoenix connector, white (pair)	335.00
FM6.2-EVID	6" 2-way, titanium-coated tweeter, 3.5" deep, 70V taps: 7.5, 15, 30, or 60W, 60Hz-20kHz, 4-pin Phoenix connector, white (pair)	453.00
SE-42-EVID	Surface mounting enclosure for FM4.2-EVID, includes wallmount brackets (pair)	57.00
SE-62-EVID	Surface mounting enclosure for FM6.2-EVID, includes wallmount brackets (pair)	72.00

### EV EVID SPEAKERS

The EVID™ series from EV is ideal for background/foreground PA systems. Features include an ABS plastic case, dual woofers for extended bass, coherent coverage waveguide horn (4.2 and 6.2), treated woofer cones for added weather-resistance, magnetic shielding, durable zinc-plated steel grille, and included cast aluminum Strong-Arm-Mount™ (SAM™) system. The supplied mount has over 100° of swing and 45° of rotation-simple keyed hex head adjustments make installations quick and easy.



ITEM	DESCRIPTION	PRICE
3.2	2x3.5", 50W, 87dB, 8ohms 85Hz-20kHz (pair)	252.00
3.2W	Same model as 3.2, but in white (pair)	252.00
3.2T	Transformer 70V version (pair)	273.00
3.2TW	Same model as 3.2T, but in white (pair)	273.00
4.2	2x4", 150W, 90dB, 8ohms 65Hz-20kHz (pair)	355.00
4.2W	Same model as 4.2, but in white (pair)	355.00
4.2T	Transformer 70V version (pair)	366.00
4.2TW	Same model as 4.2T, but in white (pair)	366.00
6.2	2x6", 180W, 95dB, 8ohms 62Hz-20kHz (pair)	556.00
6.2W	Same model as 6.2, but in white (pair)	556.00
6.2T	Transformer 70V version (pair)	577.00
6.2TW	Same model as 6.2T, but in white (pair)	577.00
12.1	Dual input subwoofer, crossover for 4 satellites, wood, metal grill, 175/175W, 100dB, 8ohms, 12" woofer, 40Hz-140Hz (each)	567.00



### JBL COMMERCIAL SERIES

These ceiling loudspeakers provide excellent performance for paging and background music for restaurants, schools, and other public applications. High sensitivity provides maximum sound level and wide dispersion ensures excellent coverage. The drivers features a full 1" diameter voice coil with a Kapton™ coil-former and high-temperature wire for superior power dissipation and long-term reliability. All run at 100V, 70V and 25V taps w/ multiple tap settings.



ITEM	DESCRIPTION	PRICE
CSS8004	4" ceiling speaker, 90 dB, 15W, 175° coverage	19.00
CSS8008	8" ceiling speaker, 96 dB, 15W, 120° coverage	24.95
CSS8018	8" high-output ceiling speaker, 97 dB, 20W, 110° coverage	34.00
CSS-BB4X6	Back can for CSS8004, 6 pack	52.00
CSS-BB8X6	Back can for CSS8008 and CSS8018, 6 pack	94.00
CSS-TR4/8X12	Tile rails for CSS-BB4 and CSS-BB8, 12 pack	28.00





### JBL CONTRACTOR 40 SERIES IN-CEILING SPEAKERS

This line of in-ceiling speakers features JBL's conical Radiation Boundary Integrator® technology and offers consistent coverage and superior pattern control. All models but the 42C also have 70V/100V taps, and screw-down removable locking clip-in connectors. Priced each, sold in pairs only.



ITEM	DESCRIPTION	PRICE
CONTROL-42C	Ultra-compact, 2.5" mid-high driver, 160Hz-20kHz, 30W@16ohms...	64.00
CONTROL-47C/T	Extended bass, 6.5" woofer, 1" tweeter, 50Hz-20kHz, 150W@8ohms...	212.00
CONTROL-47HC	For high ceilings, 6.5" LF, 1" tweeter, 55Hz-17kHz, 150W@8ohms...	256.00
CONTROL-47LP	Low-profile, 6.5" LF, 1" tweeter, 68Hz-20kHz, 150W@8ohms...	182.00
CONTROL-40CS/T	8" long-throw subwoofer, 30Hz-280Hz, 200W@8ohms...	296.00

**JBL CONTROL CEILING SPEAKERS** Delivering high power handling, overload protection, wide dispersion and exceptional sound level capability, and packaged as complete system including integral back-can, front grille, rotating mounting ears and tile bridge support hardware. Priced each, sold in pairs only.



ITEM	DESCRIPTION	PRICE
CONTROL-19CS	8" subwoofer	199.00
CONTROL-24C-MICRO	4" 15/30W 8ohms	65.00
CONTROL-24CT-MICRO	4" with 70/100V transformer	69.00
CONTROL-24C	4" 40/80W 16ohms	99.00
CONTROL-24CT	4" with 70/100V transformer	109.00
CONTROL-24CT-BK	Same as CONTROL-24CT, but in black	109.00
CONTROL-26C	6.5" 75/150W 16ohms	129.00
CONTROL-26CT	6.5" with 70/100V transformer	149.00
CONTROL-26CT-LS	6.5" 75/150W, listed for use in fire alarm/emergency systems	161.00

### JBL 8100 IN-CEILING LOUDSPEAKER SERIES

Featuring high-sensitivity drivers, these easy-to-install loudspeakers have 70V/100V taps and an open-back design. All models priced as each, sold in packs of four.



ITEM	DESCRIPTION	PRICE
8124	In-ceiling loudspeaker 4" full-range driver, 60Hz-18kHz	27.00
8128	In-ceiling loudspeaker 8" full-range driver, 50Hz-16kHz	36.00
8138	In-ceiling loudspeaker 8" full-range driver, 95Hz-18kHz, for use w/pre-install backcans	38.00

### JBL CONTROL 300 SERIES LARGE FORMAT CEILING SPEAKERS

8" and 12" low-frequency drivers with high-power compression drivers for higher sound output levels. These models are sold separately from the backcans, with drivers pre-mounted directly to a baffle. See accessories for back boxes and contemporary grilles. \*Indicates models are sold in pairs only.



ITEM	DESCRIPTION	PRICE
CONTROL-312CS	12" 400W, in-ceiling subwoofer	429.00
CONTROL-321C	12" coaxial, 250W, 34Hz-18kHz	339.00
CONTROL-321CT*	70V/100V 60W transformer version of CONTROL-321C	379.00
CONTROL-322C	12" coaxial, 400W, 32Hz-20kHz	499.00
CONTROL-322CT*	70V/100V 60W transformer version of CONTROL-322C	539.00
CONTROL-328C*	8" coaxial, 250W, 45Hz-18kHz, 12" waveguide	279.00
CONTROL-328CT*	70V/100V 60W transformer version of CONTROL-328C	309.00
MTC300BB8	Round, 1 cu. ft. backcan for the Control 328C & 328CT	80.00
MTC300BB12	Rectangular, 3 cu. ft. backcan for any of the 12" models	233.00
MTCRG6/8	Round grille for the Control 328C & 328CT	27.00
MTC300SG12	Square grille for any of the 12" models	37.00
MTC300T150	Higher power 150W transformer for higher output levels	78.00

### JBL CONTROL-126W/CONTROL-128W IN-WALL SPEAKERS

Premium in-wall speakers with a polymer-coated aluminum cone woofer with pure butyl rubber surround. The pure titanium dome tweeter is mounted on a low-diffraction swivel-mounting system. This enables directing high frequencies where they are required without the diffraction distortion inherent in other multidirectional tweeter designs. Priced each, sold in pairs only.



ITEM	DESCRIPTION	PRICE
CONTROL-126W	6.5", 38Hz-20kHz, 100W cont. prog. (200W peak), 88dB sensitivity	149.00
CONTROL-126WT	CONTROL-126W w/70V transformer	169.00
CONTROL-128W	8", 30Hz-20kHz, 120W cont. prog. (240W peak), 90dB sensitivity	189.00
CONTROL-128WT	CONTROL-128W w/70V transformer	209.00
MTC126RIF	Rough-in frame kit for CONTROL-126W	26.00
MTC128RIF	Rough-in frame kit for CONTROL-128W	26.00

**JBL CONTROL SURFACE MOUNT SERIES** These high-performance contractor installation speakers feature rugged molded high-impact polystyrene enclosures, symmetrical 90° horn geometry, compact design and textured, ready-to-paint exterior surfaces. They include invisible mounting system, spring-loaded banana plug terminals and optional factory-installed autoformers. All but the Control-SB2 are also available in white. All models priced as each but Control-23, -25, -28 versions are only available for purchase in pairs. Call for pricing and information on speaker mounts.



ITEM	DESCRIPTION	PRICE
CONTROL-23	3.5" woofer, 50W, black	99.00
CONTROL-23T	Same as above, 70V version	109.00
CONTROL-25	5.25" woofer, 150W continuous, black	129.00
CONTROL-25T	70V version of Control-25	145.00
CONTROL-25AV	5.25" shielded indoor/outdoor, 200W continuous, black	169.00
C25AV-LS	5.25" woofer, 200W continuous, UL certified for indoor/outdoor safety/fire alarm applications, black	185.00
CONTROL-28	8" woofer, 175W continuous, black	229.00
CONTROL-28T-60	Same as above, 70V version	245.00
CONTROL-SB2	Dual 10" voice coil subwoofer, trapezoidal shape, black only	299.00
CONTROL-SB210	Flyable dual 10" subwoofer w/adaptor kit for I-bolts (bk or wh)	539.00

**JBL CONTROL CRV LOUDSPEAKERS** This weather-resistant loudspeaker features a 70V/100V transformer, dual 4" woofers, a 3/4" tweeter, and comes with a wall-mount bracket. Its curved design allows it to be mounted in a 2-speaker, 180° half arc or a 4-speaker, 360° full circle cluster, which requires a pole-mount bracket.



ITEM	DESCRIPTION	PRICE
CONTROL-CRV	Indoor/outdoor 75W loudspeaker, 80Hz-20kHz	199.00
CONTROL-CRV-WHITE	Same as above, but in white	199.00
PMB-BK	Black pole-mount bracket for 4 CONTROL-CRV speakers	50.00
PMB-WH	White pole-mount bracket for 4 CONTROL-CRV-WHITE speakers	50.00

**JBL CONTROL 50 SURFACE MOUNT SUBWOOFER/ SATELLITE SYSTEM** For wide-bandwidth, hi-fi background music applications. Easy to mount and compatible with the Control 40 in-ceiling series. Satellite loudspeakers can be angled up to 45° off-axis, and are selectable for 70/100V operation, or low impedance. Control 52 models are priced as each, sold only in pairs.



ITEM	DESCRIPTION	PRICE
CONTROL-50S/T	8" subwoofer, 150W, 32-200Hz, comes w/wall-mount brackets, six removable locking 2-pin input connectors with screw-down terminals, black	300.00
CONTROL-50S/T-WH	Control-50S/T in white finish	300.00
CONTROL-52	2.5" Surface-mount satellite loudspeaker, 50W, 16ohms, 140Hz-20kHz, screw down input terminals, black	54.00
CONTROL-52-WH	Control-52 in white finish	54.00

### JBL CONTROL 60 CONTRACTOR PENDANT SPEAKERS

These loudspeakers bring outstanding coverage to rooms and venues with open architecture or high-ceilings, while providing superior voice and musical clarity for rooms with difficult acoustics. They feature large diameter high-frequency waveguides with low-frequency projection apertures that work in tandem to provide a seamless integration of coverage between the two coaxially-mounted drivers. The result is even pattern control and coverage with consistent flat, frequency response. Available in white upon request. Models are priced as each, but sold in pairs.



ITEM	DESCRIPTION	PRICE
C62P	Ultra-compact mid-high satellite speaker; 2" driver, 20W @ 16ohms	84.00
C65P/T	Compact full-range speaker; 120° conical coverage, 5.25" LF w/ tweeter, 75W @ 8ohms, 60W multi-tap transformer	188.00
C67P/T	Extended range high-fidelity speaker; 120° conical coverage, 6.5" LF w/ tweeter, 75W @ 8ohms, 60W multi-tap transformer	272.00
C67HC/T	Narrow-coverage high ceiling speaker; 75° coverage, 6.5" LF w/ tweeter, 75W @ 8ohms, 60 multi-tap transformer, 93 dB sensitivity	320.00

**PRICES SUBJECT TO CHANGE WITHOUT NOTICE.**  
Call today or visit us online!



**Honesty and Value**  
since 1971



AMP1S54

**OWI INC. AMPLIFIED CEILING SPEAKER PACKAGES** Packages include 1 - 25W amplified speaker (5" or 6") that will drive the non-amped speakers in the package, a 12V power supply, tile bridge(s), backcan(s), and 5" 20W @ 8ohm or 6" 25W @ 8ohms non-amplified speakers (# non-powered speakers specified in each kit). Mono and stereo volume control wallplates included in "VC" packages (in white or brushed steel).

ITEM	DESCRIPTION	PRICE
<b>5.25" Speaker Kits – all include 1- 5.25" AMPIC5 -25W powered single-source coaxial speaker, 12V power supply, and additional non-powered speakers/accessories specified below</b>		
AMP1S51.....	Kit w/1 tile bridge, & 1 backcan .....	252.90
AMP1S51MVC.....	As AMP1S51, but adds mono vol. ctrl wallplate (select finish).....	351.90
AMP1S51SVC.....	As AMP1S51MVC, but w/stereo vol. ctrl wallplate (select finish).....	369.90
AMP1S52.....	Kit w/1-IC5 non-powered 5" speaker, 2 tile bridges, & 2 backcans... 330.30	
AMP1S52MVC.....	As AMP1S52, but adds mono vol. ctrl wallplate (select finish).....	429.30
AMP1S52SVC.....	As AMP1S52MVC, but w/stereo vol. ctrl wallplate (select finish).....	477.30
AMP1S54.....	Kit w/3-IC5 non-powered 5" speakers, 4 tile bridges, & 4 backcans... 484.20	
AMP1S54MVC.....	As AMP1S54, but adds mono vol. ctrl wallplate (select finish).....	583.20
AMP1S54SVC.....	As AMP1S54MVC, but w/stereo vol. ctrl wallplate (select finish).....	601.20
<b>6" Speaker Kits – all include 1- 6.5" AMPIC6 -25W powered single-source coaxial speaker, 12V power supply, and additional non-powered speakers/accessories specified below</b>		
AMP1S61.....	Kit w/1 tile bridge, & 1 backcan .....	270.90
AMP1S61MVC.....	As AMP1S61, but adds mono vol. ctrl wallplate (select finish).....	369.90
AMP1S61SVC.....	As AMP1S61MVC, but w/stereo vol ctrl wallplate (select finish).....	387.90
AMP1S62.....	Kit w/1-IC6 non-powered 6" speaker, 2 tile bridges, & 2 backcans... 357.30	
AMP1S62MVC.....	As AMP1S62, but adds mono vol. ctrl wallplate (select finish).....	456.30
AMP1S62SVC.....	As AMP1S62MVC but w/stereo vol. ctrl wallplate (select finish).....	474.30
AMP1S64.....	Kit w/3-IC6 non-powered 6" speakers, 4 tile bridges, & 4 backcans... 529.20	
AMP1S64MVC.....	As AMP1S64, but adds mono vol. ctrl wallplate (select finish).....	628.20
AMP1S64SVC.....	As AMP1S64MVC, but w/stereo vol. ctrl wallplate (select finish).....	646.20

**OWI INC. ALL-N-ONE 6" TWO-WAY COAXIAL CEILING SPEAKER** This 6", 2-way coaxial ceiling speaker package includes the speaker, transformer, housing, aluminum grill, and t-bar bracket. 7.5/15/30/60 Watt power for 70V/100V, 60W max for 8ohms.



ITEM	DESCRIPTION	PRICE
ICM6-730SET.....	70/100V in-ceiling speaker w/ xformer, housing, grill, t-bar (pair).....	252.00

**OWI INC. ALUMINUM 2-WAY IN-CEILING SPEAKERS** Available in 6.5" or 8" models, these 8-ohm speakers bear 1" domed, swivel ceramic tweeters and paintable white aluminum grills. Rated at 100W min., 150W max. power.



ITEM	DESCRIPTION	PRICE
ICT62A.....	6.5" aluminum 2-way speaker, 50Hz-20kHz (pair).....	153.00
ICT82A.....	8" aluminum 2-way speaker, 40Hz-20kHz (pair).....	180.00

**NEED A REPLACEMENT PART?  
NO PROBLEM!**

**IF WE DON'T HAVE THE PART  
YOU NEED IN STOCK, WE'LL  
GET IT FOR YOU!**

**VIEW OUR  
PARTS CATALOG  
ONLINE!**



**QSC ACOUSTIC DESIGN "C" SERIES CEILING SPEAKERS** The AD-CI52 models have a 5.25" weather-resistant LF transducer incorporating a low distortion fiberglass cone, a 25mm voicecoil, and a rubber surround. The HF driver is a 1" pure titanium dome tweeter utilizing a neodymium magnet structure. With its large, ported enclosure, the AD-CI52ST provides greater low-frequency extension making it an excellent choice for installations requiring shallow install depth. The AD-CI52T has a small "footprint" for a less visually intrusive speaker. The AD-C42T has a 4" polypropylene cone woofer, and .75" dome tweeter, and features a 70/100V multitap transformer with 8-ohm bypass, screw terminal inputs, and includes a C-ring, and tile rails.

ITEM	DESCRIPTION	PRICE
AD-CI52ST-WH.....	5.25" 2-way speaker, 40W, 85Hz-20kHz, 8ohms, white (each, sold only in pairs).....	150.00
AD-CI52T.....	5.25" 2-way speaker, 40W, 63Hz-20kHz, 8ohms, white (each, sold only in pairs).....	135.00
AD-C42T.....	4" 2-way speaker, 40W, 72Hz-20kHz, 70/100V w/8-ohm bypass, white (each, sold only in pairs).....	105.00
AD-C81TW.....	8" ceiling mounted subwoofer, ported, 100W, 39Hz-184Hz, 70/100V w/8-ohm bypass, white.....	235.00
ADC-MR.....	Mud ring bracket for AD-CI52T, 6-pack.....	120.00
ADC-MRS.....	Shallow mud ring bracket for AD-CI52ST, 6-pack.....	160.00
ADC-NC.....	New construction bracket for AD-CI52T, 6-pack.....	85.00
ADC-NCs.....	Shallow new construction bracket for AD-CI52ST, 6-pack.....	120.00
ADC-MR4.....	Mud ring bracket for AD-C42T, 6-pack.....	100.00
ADC-NC4.....	New construction bracket for AD-C42T, 6-pack.....	75.00

**QSC AD-S82/AD-S282 ACOUSTIC DESIGN™ SPEAKERS** The AD-S82 is a 2-way system housed in a ported enclosure made from injection molded, high impact polystyrene. It comes in a standard and high output versions. Their enclosure incorporates an 8" weatherproof LF transducer with a heavy-duty double roll cloth surround and the high-output (H versions) employ a 1" exit compression HF driver while standard versions provide a 1" pure titanium dome tweeter. The HF driver is coupled with QSC's unique Advanced Directivity rotatable waveguide – enabling the loudspeaker to deliver accurately focused sound, regardless of its mounted orientation. The IntelliDock™ mounting system option consists of a mounting plate and detachable docking station that incorporates termination points for wiring, making installation easy and reducing the chance of enclosure theft. All AD-S82 and S82H models feature concealed 5-way binding post connections, are available in black (shown below) or white, and are priced each but sold only in pairs. The AD-S282H is a dual 8" 2-way system with similar features, but has barrier strip connections.



ITEM	DESCRIPTION	PRICE
AD-S82-BLACK.....	8" 2-way speaker, 90°x60° rotatable, 110W, 85Hz-18kHz, weather resistant, mounting options listed below (each).....	180.00
AD-S82H-BLACK.....	8" 2-way speaker, 90°x60° rotatable, 240W, 80Hz-21kHz, weather resistant, mounting options listed below (each).....	295.00
AD-YM8-BLACK.....	Yoke-mount for AD-S82 and S82H models.....	35.00
AD-YM8T-BLACK.....	Yoke-mount w/transformer.....	55.00
AD-ID8-BLACK.....	IntelliDock mount system for AD-S82 and S82H models.....	80.00
AD-ID8T-BLACK.....	IntelliDock mount system with 70/100V transformer.....	100.00
AD-S282H-BLACK.....	Dual-8" 2-way speaker, 90°x60° rotatable, 80Hz-27.7kHz, weather resistant, ships w/yoke mount (each)....	660.00
AD-S282HT-BLACK.....	Same as AD-S282H, but with 70/100V transformer with 8ohms bypass (each).....	700.00



## QSC

**QSC AD-S52 ACOUSTICDESIGN™ SPEAKERS** The AD-S52 is a high output, 2-way surface-mount speaker incorporating a 5.25" weatherproof, magnetically shielded LF transducer and a 1" neodymium tweeter. This loudspeaker carries the added benefit of built-in dynamic power protection, ensuring system reliability in the event of overload conditions. The AD-S52T models are equipped with a 70V/100V matching transformer for distributed audio systems. There is a transformer tap switch on the rear panel for setting the power level which can also be set for 8-ohm operation, bypassing the transformer completely. Both models feature a ball mount assembly for installation in a wide variety of orientations, & the assembly includes a weather resistant input connection to cover the 5-way binding post input terminals. Also available in white. All speakers priced individually, but sold only in pairs.

ITEM	DESCRIPTION	PRICE
AD-S52-BLACK	5.25" 2-way speaker, 60W, 75Hz-19kHz, weather-resistant (each).....	145.00
AD-S52T-BLACK	As above w/70V transformer (each).....	165.00
AD-YM5-BLACK	Optional yoke-mount, priced individually but sold only in pairs (each).....	15.00



## Quam

## QUAM CEILING SPEAKERS

Quam manufactures a wide variety of 8" and 4" speakers to fit your distributed sound applications. Speaker, baffle and xformer assemblies are shipped fully assembled with complete hardware.

ITEM	DESCRIPTION	PRICE
<b>Speaker Xformer Combo</b>		
8C5PAX/TBL70B	8" spkr/xformer combo, 10W.....	11.73
8C10PAX/TBL70B	8" spkr/xformer combo, 18W.....	13.03
<b>Speaker Xformer/Baffle Assemblies</b>		
C5/B25/W	8" spkr, 10W, w/TBL25 xformer, BR8W baffle.....	19.04
C5/B70/W	8" spkr, 10W, w/TBL70 xformer, BR8W baffle.....	19.04
C5/BU/W	8" spkr, 10W, w/TBLU xformer, BR8W baffle.....	19.04
SYSTEM-5	8" spkr, 10W, w/TBLU xformer, TR lay-in baffle.....	42.18
C10X/B25/W	8" spkr, 18W, w/TBL25 xformer, BR8W baffle.....	26.69
SYSTEM-5/70RS	8" spkr, 18W, w/TBL70 xformer, TR lay-in baffle.....	44.93

**QUAM CEILING BAFFLES** Quam's ceiling baffles for 8" loudspeakers are designed to resist the deterioration from shipping, handling and installing typical of many ceiling baffles. Made of cold rolled steel that is zinc-treated for corrosion resistance, these baffles are finished with a remarkably durable and attractive powdered epoxy that is significantly superior to lacquer or enamel in scratch, scuff and nick resistance.

ITEM	DESCRIPTION	PRICE
BR4WS	4" baffle with hidden studs.....	4.73
BR8A	8" brushed aluminum baffle.....	11.66
BR8W	8" white steel baffle.....	7.74
BR8WS	8" baffle with hidden studs.....	8.72

**QUAM BACKBOXES** Constructed of drawn steel, these backboxes have a bump to add acoustical rigidity and a fire-retardant acoustic damping device to reduce standing waves and mechanical resonances.

ITEM	DESCRIPTION	PRICE
ERD8	8" round flushmount back box.....	13.72
ERD8U	8" round flushmount back box, no straps.....	12.24
ES8	10-3/4" square flushmount back box, 3-3/4" depth.....	13.03
ES8-6	10-3/4" square flushmount back box, 6" depth.....	14.41

**QUAM FOREGROUND MUSIC SPEAKER SYSTEMS** These are complete, 2-way weather resistant loudspeakers, suitable for protected outdoor horizontal or vertical surface mounting, and for use with 70.7V or 8-ohm amplification. They have color-match aluminum grilles and integral "U" mounting brackets. The 20W transformers are mounted internally but an external switch chooses taps at 20W, 10W, 5W, 2.5W, 1.25W, or 8-ohm operation.

ITEM	DESCRIPTION	PRICE
FM4X1/70(BLACK)	4" 2-way, 80Hz-20kHz, black (2 per carton).....	54.19
FM4X1/70(WHITE)	4" 2-way, 80Hz-20kHz, white (2 per carton).....	54.19
FM7X1/70(WHITE)	4" 2-way, 60Hz-20kHz, white (2 per carton).....	95.35



## Quam

## QUAM SOLUTION 1 &amp; 2 CEILING SPEAKER ASSEMBLY INSTALLER PACKAGES

SOLUTION-1 consists of (2) 8C10PAX extended range 8" loudspeakers, (2) TBLU-5W 5-tap, 25/70V "universal" transformers (2) SSB-3 steel tile bridges and (2) ERD-8U UL Listed steel-back box enclosures. Components are pre-assembled but some labor and assembly is required on site. SOLUTION-2 adds volume control.

ITEM	DESCRIPTION	PRICE
SOLUTION-1	Installer Package for ceiling tile installations, white.....	54.19
SOLUTION-2	Installer Package for ceiling tile installations w/volume control, white.....	74.77

## QUAM SYSTEM 1 &amp; SYSTEM 2 SURFACE MOUNTED SYSTEMS

System 1 and System 2 are designed for surface mountable applications such as classrooms and warehouses. Assemblies can be easily mounted to rafters, walls or post. Available in baked white powder epoxy finish. The full range speaker provides excellent reproduction of paging and background music.

ITEM	DESCRIPTION	PRICE
SYSTEM-1	Surface-mount speaker and enclosure 70/25V.....	53.44
SYSTEM-2	Surface-mount speaker and sloped enclosure 70/25V.....	54.81

## QUAM CEILING MOUNTED SPEAKER ASSEMBLIES

The next generation in ceiling mounted loudspeakers, completely assembled with integral perforated grill and back box. Choose from 1'x2' or 2'x2' formats in just the right combination of features.

ITEM	DESCRIPTION	PRICE
SYSTEM-5	12"x24", 8", 5oz magnet, 25/70V pigtail xfmr, back box.....	42.18
SYSTEM-5/25RS	12"x24", 8", 5oz magnet, 25V rotary tap, back box.....	44.93
SYSTEM-5/70RS	12"x24", 8", 5oz magnet, 70V rotary tap, back box.....	44.93
SYSTEM-5/VC	12"x24", 8", 5oz magnet, 25/70V pigtail xfmr, back box, volume control.....	46.30
SYSTEM-14	12"x24", 8", coax foam edge, 10oz magnet, 70V pigtail xfmr, back box, volume control.....	60.30
SYSTEM-12	24"x24", 8", 5oz magnet, 25/70V pig-tail xfmr, back box.....	51.79
SYSTEM-12/25RS	24"x24", 8", 5oz magnet, 25V rotary tap, back box.....	54.53
SYSTEM-5/70RS	8" spkr, 18W, w/TBL70 xformer, TR lay-in baffle.....	44.93
SYSTEM-16	8" spkr, 20W, w/TCH70-10W xformer, integrated back box & trim rail, "Micro-perf" steel baffle.....	49.32

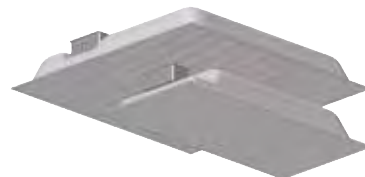
**QUAM ATTENUATORS** Designed to provide local or remote level control of 25V, 70.7V, or 100V distributed loudspeakers, these attenuators can be used to control a single speaker or groups of loudspeakers when the total speaker load is 20W or less. Each model in this series provides 10 standard steps of attenuation plus an "off" position.

ITEM	DESCRIPTION	PRICE
QC10CLASSIC	Wall-mount with embossed, paint-filled, positions.....	17.57
QC100	Wall-mount auto-transformer attenuator.....	23.45
QC10	Wall-mount, screw driver adjustable.....	16.38
QC10RM	Rack panel-mounted with dial scale.....	16.83

## QUAM SSB2 SPEAKER MOUNTING DEVICES

The Quam SSB-2 speaker support bridges are universal loudspeaker-baffle mounting devices that eliminate tile sag caused by the weight of the installation on suspended ceiling, markedly reduce the required installation time and eliminate the need for stocking different mounting devices to match various baffle and backbox configurations. The SSB-2 is designed for 8" loudspeakers, round or square baffles and back boxes.

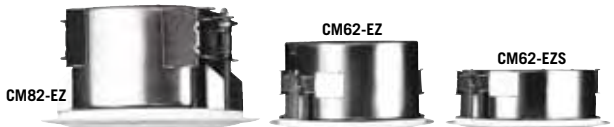
ITEM	DESCRIPTION	PRICE
SSB2	Speaker support bridge.....	8.32





**SOUNDTUBE CMI SERIES IN-CEILING SPEAKERS** This high-end series incorporates BroadBeam® full-frequency dispersion technology and fixed-wing installation features for any type of hanging-tile or sheetrock application. All models offer a 5-position tap switch for 25V, 70.7V and 100V applications, and include tile bridges and paint masks. They also feature fast-action, 4-pin Euroblock connectors to speed up wiring and simplify daisy chaining of multiple speakers. The CM1001D-T is an in-ceiling subwoofer. Some models available in both black or white.

ITEM	DESCRIPTION	PRICE
CM400I	4" woofer, 1" tweeter, 90Hz-22kHz (-3dB), 6.55" backcan	CALL
CM500I	5.5" woofer, 1" tweeter, 75Hz-22kHz (-3dB), 7.75" backcan	CALL
CM590I	5.5" woofer, 1" tweeter, 83Hz-22kHz (-3dB), 7.75" backcan	CALL
CM600I	6.5" woofer, 1" tweeter, 69Hz-22kHz (-3dB), 7.94" backcan	CALL
CM690I	6.5" woofer, 1" tweeter, 73Hz-22kHz (-3dB), 7.94" backcan	CALL
CM800IBK	8" woofer, 1" tweeter, 97Hz-22kHz (-3dB), 7.94" backcan, black only	CALL
CM800D	8" woofer, 1" tweeter, 73Hz-22kHz (-3dB), 12.46" deep backcan	CALL
CM890I	8" woofer, 1" tweeter, 80Hz-22kHz (-3dB), 7.94" backcan	CALL
CM890D	8" woofer, 1" tweeter, 77Hz-22kHz (-3dB), 12.46" deep backcan	CALL
CM1001D-T	10" woofer, 55Hz-118Hz (-3dB), 11.77" deep backcan	CALL



**SOUNDTUBE CMZ SERIES IN-CEILING SPEAKERS** This series is a lower-cost alternative the CMI line. For ease of installation, color-coded back can labels are used in conjunction with color-coded tile bridges and pre-construction brackets to ensure the right speaker is installed in the right location. Available in multiple sizes including short-can mounts (EZS models) for tight ceiling spaces. All models offer a 5-position tap switch for 25V, 70.7V, 100V applications. Models below are black but they are also available in white (substitute WH for BK in model number.)

ITEM	DESCRIPTION	PRICE
CM42-EZS-BK	4" woofer, .75" tweeter, 160Hz-20kHz (-3dB), 20W 3.5" short backcan	CALL
CM62-EZS-BK	6.5" woofer, 1" tweeter, 135Hz-22kHz (-3dB), 50W, 3.5" short backcan	CALL
CM62-EZ-BK	6.5" woofer, 1" tweeter, 125Hz-20kHz (-3dB), 50W, 5.75" backcan	CALL
CM82-EZ-BK	8" woofer, 1" tweeter, 92Hz-18kHz (-3dB), 64W, 5.75" backcan	CALL
CM82-EZS-BK	8" woofer, 1" tweeter, 109Hz-18kHz (-3dB) 64W, 3.5" short backcan	CALL
CM-EZ-II-BK	8" woofer, 1" tweeter, 73Hz-19kHz (-3dB), 40W, 7.5" backcan	CALL

### SOUNDTUBE FP SERIES FOCUS POINT SPEAKERS

These Dual-Parabolic contained speakers are perfect for museum, kiosk, point of purchase, trade shows, retail, and information booths. They provide a dramatic hot spot with crisp stereo separation. They feature twin 25 mm (1 in) convex aluminum High Excursion Micro Transducers in individually sealed enclosures for stereo or mono music & messaging. Mounting hardware included.



ITEM	DESCRIPTION	PRICE
FP6020	Stereo dual-parabolic, 43° coverage angle (20.25" x 8.75" dome), 30W, 8ohms stereo, hardwire leads	CALL
FP6030	Stereo dual-parabolic, 41° coverage angle (30.75" x 13.1" dome), 30W, 8ohms stereo, hardwire leads	CALL

### SOUNDTUBE SMI SERIES SURFACE MOUNT SPEAKER

This series incorporates BroadBeam full-frequency dispersion technology and has 25, 70.7 and 100V transmission options with voice coil/8 Ohm direct. All models feature four-pin Euroblock connectors that speed up wiring, a durable construction, with a powder coated grille, weatherized components, and high-frequency driver protection with automatic reset. The SM400I uses a tool-free Stealth u-bracket mounting for fast installation, while the SM500I and the SM590I have the proprietary SpeedLever captured-ball mounting system.



ITEM	DESCRIPTION	PRICE
SM400I	4" full-range speaker, 20W@4ohms, 92Hz-22kHz	CALL
SM500I	5.25" coaxial speaker, 75W@8ohms, 70Hz-22kHz	CALL
SM590I	5.25" high power coaxial speaker, 80W@8ohms, 71Hz-22kHz	CALL



### SOUNDTUBE RSI SERIES HANGING SPEAKERS

Designed to hang in open-ceiling environments, this series incorporates BroadBeam® full-frequency dispersion technology to deliver more intelligible sound. Uses 4-pin Euroblock connectors to speed up wiring and allow simplified daisy-chaining (RS1001I-T-SUB excluded). Powder-coated grille and terminal weather boot allow for indoor or outdoor installations. All models feature 25V, 70.7V and 100V transformer options. Speakers are available in black or white and optional surface-mount brackets are available.



ITEM	DESCRIPTION	PRICE
RS4-EZ-BK	4" full-range driver, 185Hz-13kHz (-3dB), 20W, black	CALL
RS400I	4" woofer, 1" tweeter, 95Hz-20kHz (-3dB), 20W	CALL
RS500I	5.25" woofer, 1" tweeter, 84Hz-22kHz (-3dB) 75W	CALL
RS600I	6.5" woofer, 1" tweeter, 85Hz-17kHz (-3dB) 90W	CALL
RS800I	8" woofer, 1" tweeter, 80Hz-22kHz (-3dB) 125W	CALL
RS1001I-T-SUB	10" woofer, 53Hz-120kHz (-3db) 150W	CALL
AC-RS-SM5	Surface-mount bracket for RS4-EZ, RS400I	CALL
AC-RS-SM6	Surface-mount bracket for RS600I	CALL
AC-RS-SM8	Surface-mount bracket for RS800I, RS1001I-T-SUB	CALL

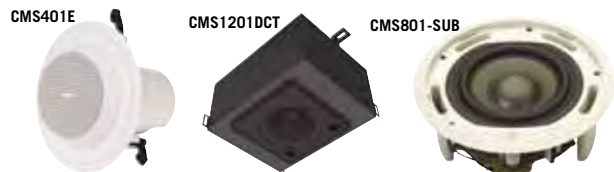


### TANNOY DI SERIES PASSIVE SURFACE MOUNT SPEAKERS

These high-performance, ultra-compact, full bandwidth surface-mount loudspeakers are optimized for indoor or outdoor use in professional or residential applications where environment durability and high quality sonic performance are required. All the passive models in the range are weather-resistant. All models available in black or white.



ITEM	DESCRIPTION	PRICE
DI5	4.5" driver, 50W RMS/100W prog., 90Hz-25kHz, 90° dispersion	CALL
DI5T	4.5" driver, 6-ohm 70V 30W transformer, 90Hz-25kHz, 90° dispersion	CALL
DI5DC	4.5" dual-concentric driver, 60W RMS/120W prog., 90Hz-50kHz, 90° dispersion	CALL
DI5DCT	4.5" dual-concentric driver, 8-ohm 70V 30W transformer, 90Hz-50kHz, 90° dispersion	CALL
DI6	6.5" driver, 60W RMS/120W prog., 75Hz-22kHz, 90° dispersion	CALL
DI6T	6.5" driver, 6-ohm 70V 60W transformer, 75Hz-22kHz, 90° dispersion	CALL
DI6DC	6.5" dual-concentric driver, 90W RMS/180W prog., 75Hz-30kHz, 90° dispersion	CALL
DI6DCT	6.5" dual-concentric driver, 8-ohm 70V 60W transformer, 75Hz-30kHz, 90° dispersion	CALL
DI8DC	8" dual-concentric driver, 90W RMS/180W prog., 65Hz-30kHz, 90° dispersion	CALL
DI8DCT	8" dual-concentric driver, 8-ohm 70V 60W transformer, 65Hz-30kHz, 90° dispersion	CALL



**TANNOY CMS SERIES IN-CEILING SPEAKERS** A premium audio solution for a high performance ceiling loudspeaker installation. Offers great intelligibility, coverage and power handling in a low profile design. The new CMS1201DCT is a powerful state-of-the-art large format in-ceiling speaker conceived, designed and built to complement Tannoy's existing CMS series speakers. All models feature transformers for use with 70V systems, 8ohm and pre-install variations of most models are available. Models listed are white, black versions of some models also available. Please call for details.

ITEM	DESCRIPTION	PRICE
<b>Medium Format Line</b>		
CMS401E	.75" HF unit, 4" LF driver, 50W, 6ohms, 110Hz-22kHz	CALL
CMS401DCE	4" dual-concentric driver, 60W, 8ohms, 110Hz-50kHz	CALL
CMS501BM	5" ICT driver w/aluminum cone, 50W, 6ohms, 85Hz-22kHz	CALL
CMS501DCBM	5" dual-concentric driver, 60W, 8ohms, 85Hz-50kHz	CALL
CMS601BM	6.5" ICT driver w/aluminum cone, 60W, 6ohms, 78Hz-22kHz	CALL
CMS601DCBM	6.5" dual-concentric driver, 80W, 8ohms, 75Hz-30kHz	CALL
<b>Large Format Line</b>		
CMS801DC-BM	8" dual-concentric driver, 90W, 8ohms, 47Hz-30kHz	CALL
CMS1201DCT	12" dual-concentric driver, 200W, 8ohms, 60Hz-20kHz	CALL
<b>Subwoofers</b>		
CMS801-SUB-BM	8" LF driver, 100W, 8ohms, 58Hz-160Hz, back can	CALL





### TANNOY CVS SERIES IN-CEILING SPEAKERS

These are full bandwidth, blind mount designs with integral steel back cans, optimized for excellent sonic quality for music and speech. CVS4 Micro has a shallow back-can and is designed for situations where ceiling space is limited. All are packaged with C-ring, tile bridge, cutout template, paint mask, grille and fully supported by UL-1480, UL-2043, and CE certifications. They come with transformer (bypassable) for 70V operation.

ITEM	DESCRIPTION	PRICE
CVS4	4" LF driver, 0.75" HF unit, tilebridge, C-ring	CALL
CVS4-MICRO	4" LF driver, 0.75" HF unit, tilebridge, C-ring	CALL
CVS6	6" co-axial driver, tilebridge, C-ring	CALL
CVS4-RING	Pre-install ring for the CVS4	CALL
CVS6-RING	Pre-install ring for the CVS6	CALL



### TOA SURFACE MOUNT WIDE DISPERSION SPEAKER SYSTEMS

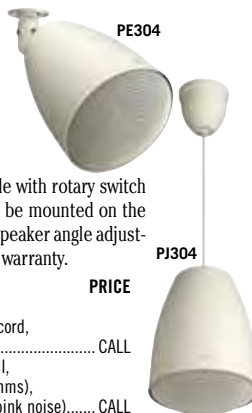
These speaker systems are designed to provide high-quality sound & reliable performance for restaurant, retail, and audio/visual applications. Features include 2-way bass-reflex design, high-impact polystyrene enclosure with 4", 5", or 8" low frequency driver & dome tweeter. For challenging acoustic environments, users can easily reduce the high frequency dispersion of F-2000 models by simply installing an included horn adapter to create 80°x80° dispersion. Model options include 70.7V transformer (with screwdriver-adjustable power taps) or low impedance, black or white enclosures and indoor or weather-resistant versions. All models include a versatile wall/ceiling-mount bracket for easy installation, and push terminal inputs. All models are backed with a 5-year warranty. Model numbers shown are black.

ITEM	DESCRIPTION	PRICE
F1000B	4" 2-way speaker, 90W@8ohms, 85Hz-20kHz, 90°x90°	CALL
F1000BT	As F1000B, but w/70V (taps at .5W, 1.5W, 2.5W, 7.5W, 15W) or 100V (taps at 1W, 3W, 5W, 15W) operation	CALL
F1000BTWP	As F1000BT but all-weather version w/splash-proof rating of IPX4	CALL
F1300B	5" 2-way speaker, 150W@8ohms, 80Hz-20kHz, 110°x100°	CALL
F1300BT	As F1300B but w/70V (taps at .5W, 1.5W, 2.5W, 7.5W, 15W) or 100V (taps at 1W, 3W, 5W, 15W) operation	CALL
F1300BTWP	As F1300BT but all-weather version w/splash-proof rating of IPX4	CALL
F2000B	8" 2-way speaker, 180W@8ohms, 65Hz-20kHz, 110°x100°/80°x80° adjustable	CALL
F2000BT	As F2000B but w/ 70V (taps at 1.5W, 7.5W, 15W, 30W, 60W) or 100V (taps at 3W, 15W, 30W, 60W) operation	CALL
F2000BTWP	As F2000BT but all-weather version w/ splash-proof rating of IPX4	CALL
FB100	10" subwoofer for F1000/F1300/2000, 450W@8ohms, 35Hz-160Hz, removable terminal block w/screw terminals	CALL
FB120B	12" subwoofer for F2000, 600W@8ohms, 40Hz-120kHz, NL4MPx2 and M4 screw terminals	CALL
HB1	8" flush-mount subwoofer 240W@8ohms, 45Hz-200Hz, removable terminal block w/ loop-through terminations	CALL
HYCM10B	Ceiling-mount bracket for F1000/F1300 series, black	CALL
HYCL10B	Cluster bracket for F1000/F1300 series, black	CALL
HYCM20B	Ceiling-mount bracket for F2000 series, black	CALL
HYCL20B	Cluster bracket for F2000 series, black	CALL

### TOA PUBLIC ADDRESS PENDANT SPEAKERS

Ideal for high-ceiling venues such as airports, factories, subway stations, art museums, and shopping malls. The pendant-style speakers are easy to repaint and include a balanced dome tweeter. Both are built within a bass-reflex HIPS resin enclosure 5" (12cm) cone-type projection, and driven on a high- and low-impedance (8ohm) line. Input impedance is adjustable with rotary switch on the upper side of the speaker. The PJ304 can also be mounted on the wall, and a supplied swivel bracket allows for flexible speaker angle adjustment. Both are off-white in color and include a 5-year warranty.

ITEM	DESCRIPTION	PRICE
PE304	5" pendant-style PA speaker, high ceiling, 30W (70/100V, 8ohms), w/16.4' suspension cord, push terminal type input connection	CALL
PJ304	5" pendant-style PA speaker, ceiling and wall, flexible speaker direction, 30W (70/100V, 8ohms), 70Hz-20kHz, 91dB sensitivity (500Hz-5kHz, pink noise)	CALL



## Technomad®

### TECHNOMAD VERNAL AND TURNKEY SYSTEMS 70V

The Vernal-15/15T feature horn-loaded 1" ceramic HF drivers and custom-engineered 5" LF drivers that deliver astonishing bass. A 3-layer stainless WeatherTech™ grill, self-draining cabinet design, and proprietary anti-fungal treatments make the Vernal virtually "unkillable" — an obvious choice for outdoor use. The Vernal-15T model supports both 8-ohm and 70V applications. Turnkey 70V packages are available. Each package is pre-assembled, completely weatherproof, easy-to-install, and sounds great. Each system includes Vernal-15T multitap loudspeakers w/wallmounts, 200' of wire, and a low-profile rackmount 70V mixer/amp.

ITEM	DESCRIPTION	PRICE
RPA1	Small size, 2 Vernal T loudspeakers	CALL
RPA2	Medium size, 4 Vernal T loudspeakers	CALL
RPA3	Large size, 6 Vernal T loudspeakers	CALL
VERNAL-15	5" 2-way speaker, 60W	CALL
VERNAL-15T	Dual-mode (8ohms, 70V 10/20/40/60W taps)	CALL



### TOA F SERIES WIDE DISPERSION CEILING SPEAKERS

Six models with features to suit premium-to-economy applications. Key benefits include smooth off-axis coverage, and ease of installation. Each model has a special diffusor with built-in dome tweeter for superior coaxial performance. The F-122CU, F-2322C, F-2352C and F-2852C all include integral metal back-cans with safety cable, quick-mount hardware and removable Phoenix-style connectors with loop-through points for adjacent speakers. Built-in overload protection circuitry ensures outstanding reliability. All models include built-in multi-tap transformers rated at 30W max, but also capable of 120W continuous power in 8-/16-ohm direct modes, front baffle power tap selection, and double-locking, paintable grilles. All models carry a 5-year manufacturer's warranty. Optimized equalization available when used with the E-03R module. **NOTE: all speaker models are priced per speaker, but only available to purchase as a pair.**

ITEM	DESCRIPTION	PRICE
F122CU	5" full-range, 180° dispersion, 30W (xfmr)/120W (8ohms), 70Hz-20kHz	CALL
F2352C	5" coaxial, 180° conical dispersion, 30W (xfmr)/120W (8ohms), 70Hz-20kHz	CALL
F2852C	6.5" coaxial, 120° conical dispersion, 30W (xfmr)/120W (8ohms), 70Hz-20kHz	CALL
F2322C	5" full-range, 170° conical dispersion, 30W (xfmr)/120W (8ohms), 70Hz-20kHz	CALL
F1522SC	4" full-range, 160° conical dispersion, 6W (xfmr)/18W (8ohms), 65Hz-18kHz	CALL
F2352SC	5" coaxial, 155° conical dispersion, 6W (xfmr)/18W(8ohms), 80Hz-20kHz	CALL
HYTB1	Tile bridge rails (fits F122CU, F2322C, F2352C, F2852C)	CALL
HYBC1	Surface-mount back-can (fits F122CU, F2322C, F2352C)	CALL
HYTR1	Trim ring (fits F122CU, F2322C, F2352C and F2352SC), requires HYTB1	CALL
E03R	Processor module for TOA 900 Series amplifiers	CALL



### TOA BS SERIES PUBLIC ADDRESS SPEAKERS

Fast and flexible (horizontal or vertical) installation for an exact match with your venue. The BS678 is a 6" double cone type speaker with an off-white wooden cabinet, ideally suited for background music & announcements. The BS-680FC 6" double cone speaker has a strong, all-metal body, and is suited for emergency broadcasting (voice alarm system) applications. Both wall & in-wall mounting are possible. The low profile BS-1034 & BS-1034S speakers are matched with a supplied plug-in speaker receptacle, for easy installation. The 10W rated input BS-1034/1034S combine a low-frequency 5" cone-type speaker and a high-frequency balanced dome-type speaker. The speakers are driven on a high-impedance (100V or 70V) line. Ideally suited for background music & announcements. The BS680FC and BS-1034/1034S offer innovative design based on the golden ratio (1: 1.618).

ITEM	DESCRIPTION	PRICE
BS678	6" double-cone PA speaker, 100V/70V, 6W/3W, 2 per box, off-white	CALL
BS680FC	6" double-cone PA speaker, 100V/70V, 6W/3W, off-white	CALL
BS1034	5" cone/dome PA speaker, 100V/70V, off-white	CALL
BS1034S	5" cone/dome PA speaker, 100V/70V, silver	CALL

