

Fender

**FENDER
STARCASTER**

- Offset thinline semi-hollowbody guitar with binding
- Laminated maple body with alder center-block
- Dual Wide Range humbucking pickups
- 22-fret "C" neck; 9.5" radius
- Pinned Adjusto-matic™ bridge with anchored tailpiece

STARCASTER-MN

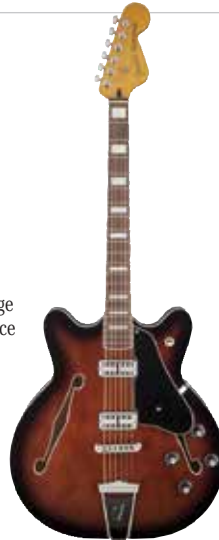
Offset semi-hollowbody699.99

FINISH OPTIONS:**FENDER
CORONADO**

- Thinline semi-hollowbody guitar with binding
- Laminated maple body with alder center-block
- Dual FideLi™Tron™ humbucking pickups
- 21-fret "C" neck; 9.5" radius
- Pinned Adjusto-matic™ bridge w/floating "F" trapeze tailpiece

CORONADO-RW

Semi-hollowbody699.99

FINISH OPTIONS:**FENDER AMERICAN
SPECIAL MUSTANG®**

- Offset alder body with gloss urethane finish
- Two Atomic™ humbucking pickups; push/pull master volume splits pickups for single-coil tone
- 22-jumbo fret "Oval C" neck; 9.5" radius; synthetic bone nut
- Adjusto-matic™ bridge with anchored tailpiece
- Includes deluxe gig bag

MUSTANG-AMSPC-RW999.99**FINISH OPTIONS:****FENDER AMERICAN
DELUXE STRAT® PLUS**

- 3 Strats in one - "Personality cards" allow you to instantly rewire the guitar with pickup/circuitry modifications
- Alder body with Gloss urethane finish, maple neck/fretboard
- (3) Noiseless™ N3 single-coil Strat® pickups (SSS); HSS adds Twin Head Modern Humbucking pickup at bridge
- 21-fret Modern "C" neck with Bi-Flex™ truss rod; 9.5-14" compound radius
- Includes 2 extra "personality cards" with wallet, strap, cable, cloth, hardshell case & owner's manual

STRAT-AMDLX+

SSS Strat Plus1499.99

STRAT-AMDLX+HSS

HSS Strat Plus1499.99

FINISH OPTIONS:**FENDER DELUXE
STRATOCASTER® HSS PLUS
TOP WITH IOS CONNECTIVITY**

- Onboard USB audio interface and 1/8" stereo headphone jack
- Alder body with Flame Maple top; gloss polyester finish
- Standard single-coil Strat® bridge/middle pickups; standard humbucking neck pickup
- 22-fret "C" neck; 9.5" radius
- Includes USB Mini-B to Lightning™ and USB Mini-B to USB Type A cables

STRAT-DLX-IOS-HSS

HSS iOS Strat599.99

FINISH OPTIONS:**FENDER FISHMAN®
TRIPLEPLAY
STRATOCASTER® HSS**

- HSS guitar with onboard Fishman TriplePlay wireless MIDI system
- Entire system is self-contained in the guitar
- Mini-USB jack, headphone jack and headphone volume control
- Fender Vintage Noiseless™ neck/middle pickups; Seymour Duncan Pearly Gates™ humbucking bridge pickup
- Includes USB transceiver, power supply and micro-USB cable

STRAT-3PLAY

Electric guitar with TriplePlay1099.99

FINISH OPTIONS:

Fender

**FENDER
60TH ANNIVERSARY
AMERICAN STANDARD
COMMEMORATIVE
STRATOCASTER®**

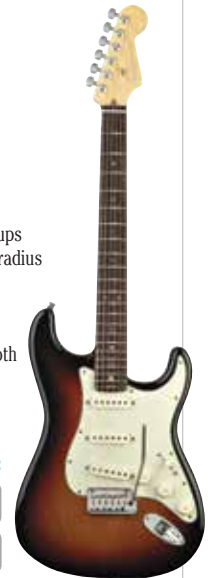
- Classic 2-Tone Sunburst ash body, maple neck
- 3 special design 1954 single-coil Strat® pickups
- 22-fret Modern C-neck; 9.5"-14" compound radius
- No-Load tone control, 2-point synchronized tremolo
- 60th Anniversary headstock medallion (rear) and engraved neck plate with Micro-Tilt
- Includes vintage-style tweed case w/60th anniversary logo, strap and strap locks, cable, polishing cloth and special commemorative book.

STRAT-MN-60TH-2TS1499.99**FENDER
60TH ANNIVERSARY
CLASSIC PLAYER
'50S STRATOCASTER®**

- Alder body, maple neck
- Desert Sand gloss nitro finish; gold hardware, gold anodized aluminum pickguard
- 3 American Vintage single-coil Strat® pickups
- 21-fret Soft "V"-neck; 9.5" radius
- 5-way switching, 2-point synchronized tremolo
- Includes Pro Series hardshell tweed case and special commemorative book

STRAT-CLASSICP-60TH999.99**FENDER
AMERICAN STANDARD
STRATOCASTER®**

- Alder body (ash on Sienna Sunburst), maple neck
- 3 Custom Shop Fat 50's pickups
- 22-fret Modern C-neck; 9.5" radius
- Thin undercoat finish for improved body resonance
- Includes molded SKB case, cable, strap, and polishing cloth

STRAT-AMSTD1299.99**FINISH OPTIONS:**

AUDIO



MUSIC



COMPUTER AV



VIDEO



LIGHTS



ACCESSORIES

Shop fullcompass.com today!

For expert advice - call: 800-356-5844

M-F: 9:00-5:30 Central



Fender

FENDER AMERICAN STANDARD TELECASTER®

- Alder or ash body (dependent upon finish choice) with contour, maple neck
- Custom Shop "Twisted Tele" neck pickup; Broadcaster bridge pickup
- 22-fret hand-rolled Modern C-neck; 9.5" radius
- Thin undercoat finish for improved body resonance
- Includes molded SKB case

TELE-AMSTD1299.99

FINISH OPTIONS:

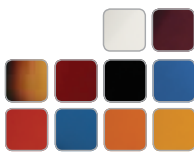


FENDER STANDARD TELECASTER®

- 2 Standard single-coil Tele® pickups
- Alder body
- Modern "C" shape maple neck with 21 medium jumbo frets
- Maple fretboard with 9.5" radius
- 6-saddle string-thru-body Tele® bridge

TELE-STD-MN 499.99

FINISH OPTIONS:



FENDER STANDARD STRATOCASTER®

- 3 Standard single-coil Strat® pickups
- Alder body
- Modern "C" shape maple neck with 21 medium jumbo frets
- Rosewood or maple fretboard with 9.5" radius
- Vintage style Synchronized Tremolo

STRAT-STANDARD 499.99

FINISH OPTIONS:



Squier

SQUIER CLASSIC VIBE TELECASTER® 50'S

- Pine body with gloss polyester finish; Butterscotch Blonde
- Two custom vintage-style single-coil Tele pickups with AlNiCo V magnets
- 21-medium-jumbo fret "Modern C" neck; 9.5" radius; synthetic bone nut
- String-thru bridge with 3 brass barrel saddles
- Vintage-tint neck; knurled chrome control knobs

TELE-CLASSVIBE-50SBB 379.99



SQUIER 60TH ANNIVERSARY CLASSIC VIBE STRATOCASTER®

- Alder body, maple neck
- Aztec Gold gloss finish; gold hardware, 3-ply parchment pickguard
- 3 American Vintage single-coil Strat® pickups
- 21-fret Modern "C" neck; 9.5" radius
- Laser-engraved "1954-2014, 60 Years" anniversary neckplate

STRAT-CVIBE-60TH..... 399.99

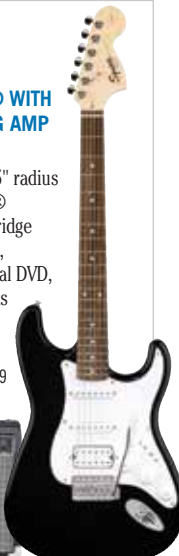


SQUIER STOP DREAMING, START PLAYING!™ SET: AFFINITY SERIES™ STRAT® WITH FENDER FRONTMAN® 10G AMP

- Alder body, maple neck
- 22-fret Modern "C" neck; 9.5" radius
- 3 standard single-coil Strat® pickups; 6-saddle tremolo bridge
- Includes Frontman 10G amp, electronic tuner, instructional DVD, gig bag, cable, strap and picks
- Available in Black or Brown Sunburst

STRATPACK-AFF-FM10..... 199.99

FINISH OPTIONS:



SQUIER VINTAGE MODIFIED MUSTANG®

- Offset basswood body, maple neck with rosewood fretboard; Fiesta Red gloss finish
- Duncan-Designed MU-102 single-coil pickups; on/off, phase switch per pickup
- 22-medium-jumbo fret "C" neck; 9.5" radius; PPS nut
- Floating bridge with Dynamic Vibrato Tailpiece; white pearloid pickguard
- Vintage-style Jazz Bass control knobs; white-tipped tuning machines

MUSTANG-VM-RW-FRD299.99



SQUIER CLASSIC VIBE STRATOCASTER® '60S

- Alder body, maple neck
- 3 alnico V custom vintage-style single-coil Strat® pickups
- 21-fret Modern "C" neck; 9.5" radius
- Vintage-tint neck and styling

STRAT-CLASSVIBE-60S379.99



FINISH OPTIONS:



SQUIER BULLET® STRAT® WITH TREMOLO HSS

- Basswood body, maple neck
- 1 Standard Humbucking, 2 standard single-coil Strat® pickups
- 21-fret Modern "C" neck; 9.5" radius
- 6-saddle vintage-style synchronized tremolo

BULLET-HSS-TREM-RW 129.99



FINISH OPTIONS:



Follow Us!

Our comprehensive technical inspection ensures your guitar ships in peak condition and is ready to play right out of the box.



FINISH OPTIONS:



G&L TRIBUTE® SERIES ASAT® CLASSIC Shoot for the stars, just as Leo intended with this updated classic design, named after an anti-satellite missile. Magnetic Field Design™ pickups grace the neck and bridge positions, providing the tones you've come to expect from his designs – warm, round tone at the neck and snarling bite from the bridge pickup. The boxed-steel top-load bridge hosts individual brass saddles for improved intonation and sustain while the traditional control plate is slightly angled, placing the controls in optimum position for volume and tonal swell effects. Other features include 22-fret rock maple medium “C” neck, maple or rosewood fretboard with classic 9” radius, standard 1-5/8” nut and 18:1 sealed-back tuners.

ITEM	DESCRIPTION	PRICE
ASAT-CLASSIC	Electric guitar, MFD pickups	499.99



FINISH OPTIONS:



G&L TRIBUTE SERIES ASAT CLASSIC BLUESBOY This factory-modded “custom” version of Leo’s original design pairs the best of traditional designs with the versatility of modern technology to create a guitar that really sings! The G&L Alnico neck humbucking pickup, by renowned designer Paul Gagon, is matched to Leo’s MFD™ single-coil bridge pickup to reproduce this axe’s crisp, cutting attack and complex harmonics. The rock maple neck with rosewood fretboard offers 22 medium-jumbo nickel frets, classic 9” radius and 1-5/8” nut width. The traditional top-load bridge is enhanced with individual brass saddles for sustain, as well as accurate intonation.

ITEM	DESCRIPTION	PRICE
ASAT-BLUES-3TS	Electric guitar, swamp ash, 3-Tone Sunburst	499.99
ASAT-BLUES-LPB	Electric guitar, basswood, Lake Placid Blue	469.99



FINISH OPTIONS:



G&L TRIBUTE SERIES ASAT CLASSIC BLUESBOY SEMI-HOLLOW Some pairings are simply classic; hot rods & rock ‘n’ roll, swamp ash bodies with maple necks and most importantly - neck humbuckers paired with bridge single-coil pickups. Designed for the working musician, this semi-hollow factory-modded guitar sports this classic pickup pair: offering both a warm sounding G&L Paul Gagon-designed Alnico humbucker and a sparkling Leo Fender-designed MFD™ single-coil pickup. The twin voice chambers are matched with an elegant F-hole while old & new collide in the vintage-style bridge paired with individual brass saddles that provide 50’s-style tones and precise modern intonation. Other features include 1-5/8” nut, 22-fret maple neck with medium “C” profile and 9” radius fretboard and 18:1 sealed-back tuners.

ITEM	DESCRIPTION	PRICE
ASAT-BLUES-HLW-CLO	Semi-hollow electric guitar	549.99



FALLOUT-CLEARORANGE

G&L GUITARS TRIBUTE® SERIES SWAMP ASH FALLOUT™ This exclusive Limited Edition Fallout offers a unique Clear Orange finish, vintage-tinted neck and Swamp Ash body and is available only at Full Compass! Based on the venerable SC-2 model, the Swamp Ash Fallout includes a G&L Saddle Lock bridge for increased sustain and Paul Gagon-designed AlNiCo pickups. The articulate P-90 neck pickup offers sparkling clarity while the humbucking pickup in the bridge adds either girth or bite via the push/pull tone potentiometer coil split. This tonal flexibility makes the Swamp Ash Fallout the ideal instrument for players of any genre - from dirty, grunting low-end riffing to sparkly, chiming chord work, this guitar punches well above its weight. Limited to 92 guitars, so order yours today, before they're all gone!

ITEM	DESCRIPTION	PRICE
FALLOUT-CLEARORANGE	Limited edition Swamp Ash electric guitar	449.00



FINISH OPTIONS:



G&L GUITARS TRIBUTE® SERIES FALLOUT™ Fallout - G&L’s classic ‘83 SC-2 guitar, if it were heavily modded by new-wave masterminds such as Devo or Band of Susans. Designed for today’s snarling riffs and jangly hooks, Fallout combines two Paul Gagon-designed AlNiCo pickups: a P-90 in the neck and a bridge humbucker that can be split via push/pull tone pot for almost any tonal combination you can imagine! The stylish pickguard sweeps gracefully along the light, comfortable mahogany body, which is paired with a hard rock maple medium “C” neck. The fast 12” radius rosewood fretboard hosts 22 medium-jumbo frets and the headstock is an exclusive design, found only on the Fallout.

ITEM	DESCRIPTION	PRICE
FALLOUT-FULLRED	Electric guitar with Rosewood fingerboard	399.99



FINISH OPTIONS:



G&L TRIBUTE® SERIES LEGACY™ It’s been established that Leo Fender knew a thing or two about designing electric guitars and the Legacy carries on his tradition – blending the best features from his S-500™ and Comanche® models with vintage-spec CLF-100 Alnico V pickups and a unique tone circuit. THE PTB™ tone system, Passive Treble and Bass, offers a wider range of frequency responses on all three single-coil pickups while the Leo-designed Dual-Fulcrum vibrato offers unbelievable stability while bending up or down. The eye-catching swamp ash (basswood on solid finish models) body and hard rock maple neck are comfortable and smooth-feeling. The rosewood/maple fretboard offer 22 medium-jumbo frets, comfortable 12” radius, and classic 1-5/8” nut width.

ITEM	DESCRIPTION	PRICE
LEGACY	Electric guitar, SSS, rosewood fretboard	469.99
LEGACY-BLB	Electric guitar, SSS, maple fretboard, blueburst	499.99

Shop fullcompass.com today!

For expert advice - call: 800-356-5844

M-F: 9:00-5:30 Central

FULL COMPASS

AUDIO



MUSIC



COMPUTER AV



VIDEO



LIGHTS



ACCESSORIES



- AUDIO
- MUSIC
- COMPUTER AV
- VIDEO
- LIGHTS
- ACCESSORIES

Ibanez

IBANEZ FR420

- Single-cutaway ash body; Wizard III maple neck
- Neck pickup: CCR1-V2; bridge pickup: CCR2-V2
- Twenty-four jumbo frets
- Tight End bridge; rosewood fretboard; pearl block inlays
- Brown Burst finish

FR420BBT449.99



IBANEZ ARTCORE EXPRESSIONIST AM83

- Double-cut semi-hollowbody; maple top/back/sides; green sparkle finish
- Two Super 58 Custom humbucking pickups
- Medium frets, 3-piece AM Expressionist mahogany/maple set neck
- ART1 bridge; rosewood fretboard; pearl block inlays
- Max. width: 14-1/2"; max. thickness: 2-5/8"

AM83LTDSPG499.99



IBANEZ 8-STRING RG STANDARD

- 8-string; basswood body; fixed bridge
- Two IBZ-8 humbucking pickups
- 24-jumbo fret Wizard II-8 5-piece Maple/Walnut neck
- Rosewood fretboard with white dot inlays; black hardware
- 27" scale neck; available in black or white

RG8-IBANEZ 8-string guitar399.99



FINISH OPTIONS:



IBANEZ AFD75T HOLLOWBODY

- Maple hollowbody with set-in neck
- Bound rosewood fretboard with medium frets
- ART2 roller bridge for tuning stability
- VBF70 vintage-style vibrato
- ACH1 & ACH2 pickups

AFD75T599.99



FINISH OPTIONS:



IBANEZ ROADCORE SERIES

- Double-bound basswood body; round profile neck
- Custom-designed Core-Tone S pickups
- Rosewood fretboard with pearl dot inlays
- Standard tremolo enhances tuning stability
- 4-screw neck plate

RC330TB499.99



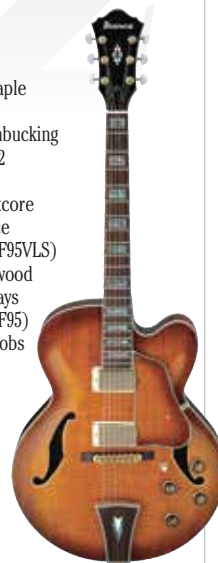
FINISH OPTIONS:



IBANEZ AF SERIES HOLLOWBODY

- Single-cut hollowbody; maple top/back/sides
- Bridge pickup: ACH 1 humbucking pickup; neck pickup: ACH2 humbucking pickup
- Large frets, mahogany Artcore set neck (AF75) or 3-piece mahogany/maple neck (AF95VLS)
- ART1 bridge; bound rosewood fretboard; pearl block inlays
- Chrome (AF75) or gold (AF95) hardware; Sure Grip III knobs

AF75399.99
AF95VLS649.99



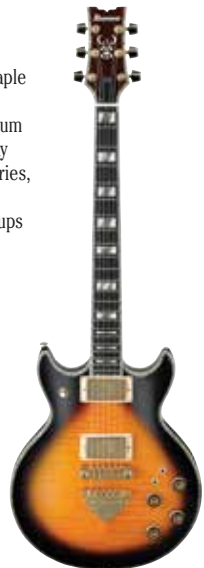
FINISH OPTIONS:



IBANEZ AR EXPRESSIONIST

- Mahogany body with flame maple cap; slim 3-piece maple neck
- Bound ebony fretboard; medium frets; pearl/abalone block inlay
- Tri-Sound switch to select series, parallel or coil-tapped wiring
- Super 80 "Flying Finger" pickups
- Includes hardshell case

AR720FM999.99



FINISH OPTIONS:



IBANEZ AR420

- Double-cut hollowbody; mahogany body with flame maple cap
- Super '58 humbucking pickups; Tri-Sound switch allows for series, parallel and coil-tapped configurations
- Medium frets; 3-piece set-in maple neck
- ART1 bridge (AS53, AS73); bound rosewood fretboard
- Gold hardware; Sure Grip III knobs

AR420VLS649.99



FINISH OPTIONS:



IBANEZ AS SERIES SEMI-HOLLOWBODY

- Double-cut semi-hollowbody; sapele (AS53), maple (AS73) or flame maple (AS93) top/back/sides
- Bridge pickup: ACH 1 humbucking pickup; neck pickup: ACH2 humbucking pickup; ACH-ST pickups (AS53)
- Large frets, mahogany Artcore set neck (AS53, AS73) or 3-piece mahogany/maple neck (A793)
- ART-ST (AS93) or ART1 bridge (AS53, AS73); bound rosewood fretboard
- Chrome (AS53, AS73) or gold (AS93) hardware; Sure Grip III knobs

AS53299.99
AS73399.99
AS93599.99



FINISH OPTIONS:



Follow Us!

Our comprehensive technical inspection ensures your guitar ships in peak condition and is ready to play right out of the box.



FINISH OPTIONS:



REVEREND GUITARS CHARGER HB This sonically flexible workhorse twangs, grunts, howls and screams with the best of them, courtesy of its 25.5" scale, and the dual Revtron Classic H pickups reproduce the sound and aesthetics of vintage PAF pickups. Tired of your axe going out of tune during sets? The graphite-impregnated nut and pin-lock tuners provide exceptional tuning stability while the dual-action truss rod adjusts bi-directionally, correcting both back-and forward-bow due to temperature/humidity changes. The passive bass roll-off can revoice your pickups, taking the tone anywhere from warm, thick jazzy tones to sparkling, spanky country and anywhere in-between! The highly resonant body is made from Korina (White Limba).

ITEM	DESCRIPTION	PRICE
CHHB	Solidbody electric guitar	749.00



FINISH OPTIONS:



REVEREND GUITARS PETE ANDERSON PA-1 SIGNATURE SEMI-HOLLOWBODY Feedback has long been the bane of the hollowbodied guitarists' existence – the guitars sound amazing, but howl uncontrollably at performance level volumes. Roots rock guitar legend Pete Anderson and Reverend came up with a solution to this problem: the Uni-Brace. This design not only eliminates unwanted feedback, it also enhances clarity, sustain and even durability. The bushing-mounted bridge, pin-lock tuners and graphite nut stay in tune, even while using the Bigsby B-70 vibrato and roller bridge heavily. Two CP-90 pickups, passive bass roll-off knob and a 15th-fret neck joint all add to this guitar's impressive featureset.

ITEM	DESCRIPTION	PRICE
PA1	Hollowbody electric guitar	1399.00



FINISH OPTIONS:



REVEREND GUITARS DOUBLE AGENT III Like a double agent, it has two personalities in one body and can switch seamlessly between them. Whether you need the "beefiness" of a Special H bridge humbucker, or the complementary sparkling sound of a neck CP-90 pickup, this guitar is ready for you. For even more tonal variation simply reach over and re-voice the custom pickups via the passive bass roll-off circuit to dial-in the perfect sound for you. The Wilkinson WVS50 IIK tremolo with locking saddles and adjustable arm swing tension combines with the pin-lock tuners and graphite nut to provide tuning stability. Other features include a Korina (White Limba) body, maple neck, 22 medium-jumbo frets and comfortable 25-1/2" scale.

ITEM	DESCRIPTION	PRICE
DAIII	Solidbody electric guitar	849.00



FINISH OPTIONS:



REVEREND GUITARS FLATROC Rockabilly, blues and rock guitarists will feel right at home playing this guitar that combines the snap of a classic 25.5" scale maple neck with the unique upper-midrange snarl of the custom Revtron pickups. Pin-lock tuners, combined with a Tune-o-matic bridge and graphite nut, ensure your guitar will stay in tune through those long nights of picking while the dual-action truss rod guarantees your neck will stay comfortable and fast-playing. Need a different voice for your pickups? With the passive bass roll-off knob your Revtrons can easily go from twang to growl - setting your tone exactly where you want it.

ITEM	DESCRIPTION	PRICE
FROC	Solidbody electric guitar	749.00



FINISH OPTIONS:



REVEREND GUITARS CLUB KING RT SEMI-HOLLOWBODY This guitar combines classic semi-hollowbody overtones with sparkle from the easy-playing 25.5" scale maple neck to create an instrument that's a joy to play. The custom overwound Revtron pickups provide sustain, while the passive bass roll-off knob allows you to re-voice them as you please. The Korina body is top-routed to create the tone chambers and then capped with a solid spruce top for bright attack and increased resonance. 22 medium-jumbo frets grace the rosewood fretboard with 12" radius and 1-21/32" nut width.

ITEM	DESCRIPTION	PRICE
CLURT	Semi-hollowbody electric guitar	849.00



FINISH OPTIONS:



REVEREND GUITARS WARHAWK III 390 Massive – that's the only way to describe the sound of this guitar that has 3 Reverend CP-90 pickups. The secret is in the construction; the raised center section increases mass, which translates to increased sustain, while the "wings" provide increased resonance, allowing this guitar to really sing! Use the passive bass roll-off knob to re-voice your pickups and add some "shimmer" to your chords with the Bigsby vibrato tailpiece matched to a stable tune-o-matic bridge. The graphite nut and pin-lock tuners make for stable tuning while the Korina body offers rich harmonics. Together all of these parts add up to a lively, highly-responsive instrument that is a blast to play.

ITEM	DESCRIPTION	PRICE
WARIII390-BIGSBY	Electric guitar with Bigsby	999.00

Shop fullcompass.com today!

For expert advice - call: 800-356-5844

M-F: 9:00-5:30 Central

FULL COMPASS

AUDIO



MUSIC



COMPUTER AV



VIDEO



LIGHTS



ACCESSORIES



AUDIO



MUSIC



COMPUTER AV



VIDEO



GRETSCH

GRETSCH ELECTROMATIC® HOLLOWBODY

Stylish and elegant, these feature “Black Top” FilterTron™ humbucking pickups, vintage-style open-back tuners, bound f-holes, hump-block pearloid inlays, and Bigsby®-licensed B60 tailpiece. Available left-handed (call for details).

- G5420T Single-cutaway 875.00
- G5422TDC Double-cutaway 875.00

FINISH OPTIONS:



G5420LH

GRETSCH WHITE FALCON™

With an aged white finish, gold-sparkle archtop body and dual TV Jones® Classic pickups this single-cutaway hollow body guitar delivers both aesthetically and sonically. Vintage features include pinned Adjusto-Matic™ bridge, B6G Bigsby® vibrato tailpiece, gold plexi pickguard with Falcon motif, gold-plated hardware and Grover® Imperial™ tuners, V-shaped Falcon headstock with gold-sparkle inlay, and gloss nitrocellulose lacquer finish.

- G6136T-LTV 3725.00



GRETSCH DOUBLE JET™ WITH BIGSBY®

The chambered double-cutaway basswood body is capped with an arched laminated maple top that hosts dual “BlackTop” FilterTron™ pickups and a Bigsby® B50 vibrato tailpiece. The rosewood fretboard offers 22 medium-jumbo frets and classic “hump block” inlays. Other stylish features include anchored Adjusto-Matic™ bridge, “G” arrow knobs, and standard threaded/knurled strap buttons.

- G5441T Solid body, Firebird Red 594.99



schecter

SCHECTER STEALTH SERIES C1

- Based on the popular C-1 Arched mahogany bound body
- Set-in mahogany neck with Ultra Access joint
- 24-fret rosewood fretboard w/ “offset reverse” dot pattern
- Dual Superrock-II dual-mode humbucking pickups; tone control tap
- Hipshot-style bridge; Graph-Tech nut

- STEALTH-C1 499.00

FINISH OPTIONS:

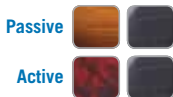


SCHECTER BANSHEE SERIES

- 5-Piece maple/walnut laminated neck
- 12-16" compound radius fretboard
- Alder body w/ quilted maple top
- Seymour Duncan JB SH-4/ '59 SH-1N pickups (passive model) EMG 81/85 pickups (active model)
- Left-handed models available

- BANSHEE-6FR-ACTIVE Passive 829.00
- BANSHEE-6FR-PASSIVE Active 829.00

FINISH OPTIONS:



SCHECTER HELLRAISER HYBRID

- Quilted maple arched top over mahogany body
- EMG 57/66 active humbucking pickups w/ brushed black covers
- Thin, satin finish neck with compound radius fretboard
- “Carbon Fiber” binding and glow-in-the-dark side dots

- HELLRAISER-HH-C1 899.00
- HELLRAISER-HH-C1-FR With Floyd Rose 999.00
- HELLRAISER-HH-C7 7-string 999.00
- HELLRAISER-HH-C8 8-string 1049.00



Follow Us!

Our comprehensive technical inspection ensures your guitar ships in peak condition and is ready to play right out of the box.