

AUDIO



MUSIC



COMPUTER AV



VIDEO



LIGHTS



ACCESSORIES



CLEARSONIC ACOUSTIC BAFFLES/DRUM SHIELDS These 0.25" thick acrylic durable ClearSonic panels isolate drums or other instruments. They fold flat for easy storage and transport. Height extenders (12" and 18") are also available.

ITEM	DESCRIPTION	PRICE
A4-1	4'x1' 1-section add-on for A4	75.60
A4-3	4'x6' 3-section panel	226.80
A4-4	4'x8' 4-section panel	302.40
A4-5	4'x10' 5-section panel	378.70
A4-6	4'x12' high 6-section panel	454.30
A4-7	4'x14' 7-section panel	529.90
A5-1	5.5'x2' 1-section add-on for A5	105.70
A5-3	5.5'x6' 3-section panel	317.10
A5-4	5.5'x8' 4-section panel	422.80
A5-5	5.5'x10' 5-section panel	528.50
A5-6	5.5'x12' 6-section panel	634.20
A5-7	5.5'x14' 7-section panel	739.90
AX12-5	12" height extension panel, for 5-section panels	122.50
AX12-6	12" height extension panel, for 6-section panels	147.00
AX12-7	12" height extension panel, for 7-section panels	171.50
T-BASE22	Base channel support for drum shield	12.60

CLEARSONIC SORBER 1.5" thick compressed fiber-glass inside a heavy Velcro receptive cloth casing. Free-standing models open to 4' wide but fold in half for portability and storage.

ITEM	DESCRIPTION	PRICE
S2D	24"Hx22"W for lower half of clear panel, wall or ceiling with Velcro	36.26
S4-2D	2-panel free-standing, 44"Hx48"W	129.64
S5-2D	2-panel free-standing, 66"Hx48"W	169.82
SX12-2D	1'x2' height extenders for S5-2 baffles	68.46



CLEARSONIC PORTABLE CASES

Portable cases will hold-up to a 7-panel acrylic system. Soft-sided models feature padded lining, handles and zippered pouch for accessories. The CH5 is a hard-sided model made from .098" molded ABS plastic. It can fit up to 7 AX panels and has interior foam padding, zinc-plated steel corners, nylon straps, wheels as well as spring-loaded cushioned handles.

ITEM	DESCRIPTION	PRICE
C2	Zippered case for A2 panels	89.39
C4	Zippered case for A4 panels	112.70
C5	Zippered case for A5 panels	136.50
CH5	A5 panel hard case	516.60



CLEARSONIC FLECTOR Personal monitor disc that mounts behind vocal microphones to reflect direct sound back to the musician, clear modified acrylic.

ITEM	DESCRIPTION	PRICE
FLECTOR8	8" Flector	7.00



ISOPAC-A

CLEARSONIC ISOPAC ISOLATION PACKAGES IsoPacs A and B feature the Lid System, reducing the amount of sound that would normally escape upwards. IsoPacs C and D are for applications where the lid is not necessary, but still feature SORBER absorption baffles to control the reflected sound. ClearSonic panels (CSP) are a reflective sound barrier but do not absorb sound while SORBER is a great sound absorber but not a great barrier. All models are available in your choice of light or dark grey finish.

ISOPAC-A – DRUM SHIELD KIT

- Dimensions: 7'W x 9'D x 6.5'H
- Kit contains: (1) A5-7 - 7-section CSP, (3) S5-2L - 4'W x 5.5'H SORBER baffle (rear), (7) AX12 - 12" height extenders, (1) STC5L - 2'W x 5.5'D center lid section, (1) STC512L - 12"W x 5.5'D center lid section, (2) STS5L - 2'W x 5.5'D side lid section, (7) S2L - 22"W x 2'H SORBER baffle, (1) Fan - 6", 2-speed, low-noise fan

ITEM	DESCRIPTION	PRICE
ISOPAC-A	Drumshield kit with lid system, 50-60% sound reduction	2066.75

ISOPAC-B – DRUM SHIELD KIT

- Dimensions: 7'W x 7'D x 6.5'H
- Kit contains: (1) A5-6 - 6-section CSP, (3) S5-2 - 4'W x 5.5'H SORBER baffle (rear), (6) AX12 - 12" height extenders, (1) STC5 - 2'W x 5.5'D center lid section, (2) STS5 - 2'W x 5.5'D side lid section, (4) S2 - 22"W x 2'H SORBER baffle, (1) Fan - 6", 2-speed, low noise fan

ITEM	DESCRIPTION	PRICE
ISOPAC-B	Drum shield kit with lid system, 50-60% sound reduction	1732.92

ISOPAC-C – DRUM SHIELD KIT

- Dimensions: 6'W x 7'D x 5.5'H
 - (1) A5-5 - 5-section CSP, (3) S5-2 - 4'Wx5.5'H SORBER baffle (rear), (5) S2 - 22"W x 2'H SORBER baffle
- Sound reduction not possible to measure without lid system

ITEM	DESCRIPTION	PRICE
ISOPAC-C	Drum shield kit, no lid system	1219.26

ISOPAC-D – DRUM SHIELD KIT

- Dimensions: 6'W x 6'D x 4'H
 - Kit contains: (1) A4-5 - 5-section CSP, (2) S4-2L - 4'Wx4'H SORBER baffle (rear), (5) S2L - 22"W x 2'H SORBER baffle
- Sound reduction not possible to measure without lid system

ITEM	DESCRIPTION	PRICE
ISOPAC-D	Drum shield kit, no lid system	819.28

Full Compass also carries IsoPac Vocal Booth Kits. Shop fullcompass.com for details.

CLEARSONIC CSP-LITE DRUM SHIELD KIT

This lower-cost 5-panel kit is constructed with (5) 24"Wx66"Hx3/16"D acrylic panels and is pre-assembled with flexible hinges to fold flat for easy storage. Unlike standard ClearSonic panels, the LITE2466-5 are unfinished "as-cut and square". Note that they are not designed to support ClearSonic's height extenders or LidPac assemblies.

ITEM	DESCRIPTION	PRICE
LITE2466-5	Drum shield kit, 24"Wx66"Hx3/16"D	350.00



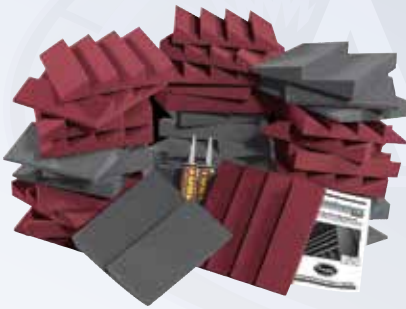
Follow Us!

Shop anytime. Buy online. Go to fullcompass.com



AURALEX ROOMINATOR KITS

Kits contain Studiofoam Absorbent Wedge Panels to calm early reflections and kill that hollow, ringy room sound. The LENRD Bass Traps (not included in the D36-DST kit) smooth out inaccurate and excessive low frequencies while the T-Fusor Sound Diffusers (Pro Kit only) gives a spacious ambiance and wide sweet spot that big-name studios have.



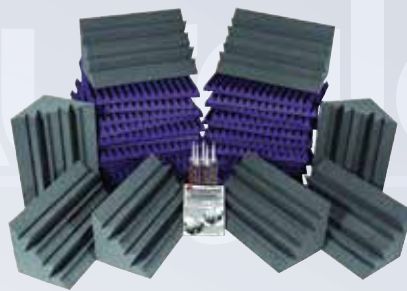
D36-DST KIT

Entry-level system for small rooms (6'x8'x8' or less).

Kit Includes:

- (18) DST-112 1'x1' panels (charcoal)
- (18) DST-114 1'x1' wedge panels (various colors)
- (2) Tubetak liquid adhesive

ITEM	DESCRIPTION	PRICE
D36CHA/BUR	Charcoal and burgundy	169.99
D36CHA/CHA	Charcoal only	169.99
D36CHA/PUR	Charcoal and purple	169.99



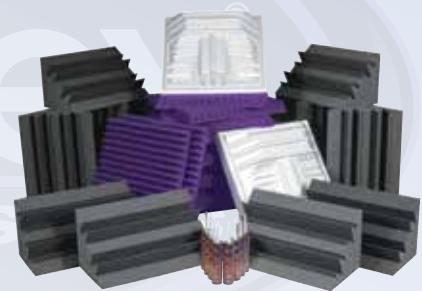
PROJECT 2 KIT

Designed primarily for rooms <100 sq. ft.

Kit Includes:

- (24) Studiofoam 2'x2'x2" wedge panels (charcoal)
- (8) LENRD Bass Traps (various colors)
- (2) Tubetak liquid adhesive

ITEM	DESCRIPTION	PRICE
PROJ2ROOM-CHA	Charcoal only	749.99
PROJ2ROOM-BUR	Charcoal and burgundy	749.99
PROJ2ROOM-PUR	Charcoal and purple	749.99



PRO PLUS KIT

Designed primarily for rooms 15'x20'x8' or smaller.

Kit Includes:

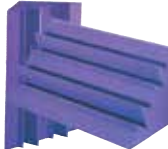
- (36) Studiofoam 2'x2'x2" wedge panels (charcoal)
- (12) LENRD Bass Traps (various colors)
- (8) T-Fusor 3D Sound Diffusers
- (2) Tubetak liquid adhesive

ITEM	DESCRIPTION	PRICE
PROPLUSCHA/PUR	Charcoal and burgundy	1449.99
PROPLUSCHA/CHA	Charcoal and charcoal	1449.99
PROPLUSCHA/PUR	Charcoal and purple	1449.99



AURALEX LENRD BASS TRAPS

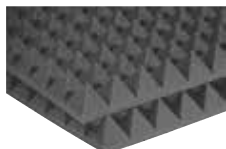
LENRD (Low End Node Reduction Device) Bass Traps are triangular-shaped, irregularly wedge-cut pieces of Studiofoam that give superior broadband absorption, especially at low frequencies. They fit room corners and wall/ceiling junctures perfectly and are the easiest and most cost-effective way to control excess low frequency energy without sacrificing large amounts of cubic space. Noise reduction coefficient (NRC) is 1.35. (Recommended adhesive: 1 Foamtak or 2 Tubetak per eight units. Sold separately.)



ITEM	DESCRIPTION	PRICE
LENBLU	Bass trap, blue, 8-pack	309.99
LENBUR	Bass trap, burgundy	38.75
LENBUR-HP	Bass traps, burgundy, 4-pack	154.99
LENCHA	Bass trap, charcoal	38.75
LENCHA-HP	Bass traps, charcoal, 4-pack	154.99
LENPUR	Bass trap, purple	309.99
LENPUR-HP	Bass traps, purple, 4-pack	154.99

AURALEX STUDIOFOAM® PYRAMIDS

A perfect combination of good looks and great sound, giving a cool look to your studio. Pyramids offer tons of versatility, provide virtually seamless installations, supply a bit of extra diffusion due to their 4-sided geometry.



Available in multiple colors, substitute the last 3 letters of the part number for color (CHA = charcoal, BUR = burgundy, PUR = purple. Other colors available for some models, call a sales pro for more information. Prices listed are for charcoal models, a small upcharge is added for alternate colors.)

ITEM	DESCRIPTION	PRICE
2PYR24XXX	(12) 2'x4'x2" Pyramid Studiofoam	479.99
4PYR24XXX	(6) 2'x4'x4" Pyramid Studiofoam	479.99
2PYR22XXX	2'x2'x2" Pyramid Studiofoam	21.67
4PYR22XXX	2'x2'x4" Pyramid Studiofoam	43.33
FOAMTAK-SINGLE	Spray adhesive, 96 sq. ft. coverage	24.99
TUBETAK-PRO-SINGLE	Liquid adhesive, 32 sq. ft. coverage	9.99

AURALEX STUDIOFOAM® PRO CLASS 'A' ACOUSTICAL FOAM

The first melamine-free acoustical foam with a Class 'A' fire rating. Even though its profile is 1.5" thick, it offers a higher noise reduction coefficient (NRC = .90) than 2" Studiofoam Wedges. It will not rot, crumble or suffer surface harm from normal use. Available in 2'x2' and 2'x4' charcoal grey panels. Features beveled edges similar to SonoFlat and EliTE Pro Panels.



ITEM	DESCRIPTION	PRICE
15FFP24CHA	(10) 2'x2' StudiofoamPro, 1.5" thick, charcoal	299.99
15FFP48CHA	(10) 2'x4' StudiofoamPro, 1.5" thick, charcoal	599.99

AURALEX STUDIOFOAM® WEDGE FOAM

Has triangular horizontal cuts and treats most small to medium sized areas including vocal booths, control rooms and studios. An industry workhorse. Overall NRC = .80, and comes in various colors. Wedgies™ are 1'x1' panels and come in 2" only.



Available in multiple colors, substitute the last 3 letters of the part number for color (CHA = charcoal, BUR = burgundy, PUR = purple. Other colors available for some models, call a sales pro for more information. Prices listed are for charcoal models, a small upcharge is added for alternate colors.)

ITEM	DESCRIPTION	PRICE
2SF24XXX	(12) 2" Studiofoam, 2'x4'	449.99
3SF24XXX	(8) 3" Studiofoam, 2'x4'	459.99
4SF24XXX	(6) 4" Studiofoam, 2'x4'	449.99
2SF22XXX	2" Studiofoam, 2'x2'	19.17
4SF22XXX	4" Studiofoam, 2'x2'	38.33
FOAMTAK-SINGLE	Spray adhesive, 96 sq. ft. coverage	24.99
TUBETAK-PRO-SINGLE	Liquid adhesive, 32 sq. ft. coverage	9.99
WEDGIES	(24) 2" foam wedges, 1'x1'	4.58

Shop fullcompass.com today!

For expert advice - call: 800-356-5844

M-F: 9:00-5:30 Central



AUDIO



MUSIC



COMPUTER AV



AUDIO



ACOUSTIC GEOMETRY™

BY ACOUSTICAL SURFACES

ACOUSTIC GEOMETRY MASS-LOADED VINYL

Ideal for music and post-production studios, home theaters and businesses this cost-effective 1/8" thick vinyl barrier is 54" wide and comes in 8' lengths. Barium, calcium carbonate and EPDM increase density to 1 lb. per square foot without the use of dangerous lead. STC (Sound Transmission Class) 26.



ITEM	DESCRIPTION	PRICE
AGVB1LB5496	4-1/2" x 8' mass-loaded vinyl sheet	70.98

ACOUSTIC GEOMETRY DOOR SEAL KIT

This kit includes an automatic bottom seal and adjustable jamb seals, which create an airtight seal. It lowers a neoprene gasket to the door threshold and works as a self-leveling unit – the gasket end nearest the hinge drops first, with the rest of the seal self-leveling to the threshold as the door closes. It's installed around the sides and top of the door jamb, using soft neoprene rubber to create an airtight seal by closing the air gap between the door and the jamb. It can be cut down to desired height, with a maximum door height of 84", maximum door width of 36", and a minimum door width of 34".



ITEM	DESCRIPTION	PRICE
AGDOORSEALKITHD	Door seal kit	323.26

ACOUSTIC GEOMETRY STUDIO SOUNDPROOF WINDOWS

These beautifully-constructed insulated studio windows have 2 pieces of 1/4" laminated glass, plus an air cavity and an additional pane of 3/8" laminated glass. They feature a 6-3/8" aluminum frame, acoustically treated frames & seals, angled & flat glass for maximum acoustical performance, and Class A-1 ASTM E-84 non-flammable Sound Silencer™ acoustical frame inserts. They fit any wall thickness by inseting or offsetting the acoustical window.



ITEM	DESCRIPTION	PRICE
AWST63672	Studio6 Soundproof Window 36"x72"	3694.59
AWST43648	Studio4 Soundproof Window 36"x48"	1847.29

ACOUSTIC GEOMETRY GREEN GLUE DAMPENING COMPOUND

Green Glue is a liquid, waterborne, viscoelastic damping compound which represents the highest performance of its type. It's significantly lower in applied cost than competitive products, achieving a better cost/performance ratio in damping normal construction materials such as drywall, wood products, etc. Features: non-toxic, no mixing required, simple & familiar "caulk gun" application, improved sound isolation, thoroughly lab-tested, offers reduced impact noise, improved resistance to airborne sound and reduction in structure-borne sound.



ITEM	DESCRIPTION	PRICE
ASGG29	29oz tube of green glue	19.98

PRIMAACOUSTIC

PRIMAACOUSTIC FLEXIBOOTH VOICE-OVER BOOTH

The 48"x48" wall-mounted fiberglass FlexiBooth™ opens like a cupboard to create a 16 cubic foot "voice-over zone" that eliminates room ambience. Ideal for voiceovers, vocal tracking, and podcasting, it absorbs sound energy through the voice range. Multiple FlexiBooths can be placed in a room and customized to reflect various acoustic environments. Doubles as a bass trap when closed and can be cleat mounted to any wall surface.



ITEM	DESCRIPTION	PRICE
FLEXI-BOOTH	Dual-purpose vocal booth/bass trap, 2" thick main panels, 1" thick door panels	449.99

ACOUSTIC GEOMETRY ACO-U-STICK These sound absorber mini-panels are a great solution for reducing echo and loud sounds in studios, practice rooms, hallways, and basements. The panels are very affordable, high-quality, and easy to stick on walls or other surfaces. The panels are 1" square, 1" thick, and ship in an economical 6-pack, complete with self-stick mounting tabs. Aco-U-Stick panels are made from eco-friendly recycled Bonded Acoustical Cotton and are environmentally-friendly with no VOCs.



ITEM	DESCRIPTION	PRICE
ACOUSTIK6	6-pack of Mini Acoustic Panels, 1'x1'x1"	29.98

ACOUSTIC GEOMETRY CURVED DIFFUSORS

Curve Diffusors are the most natural-sounding, accurate, affordable improvement you can make to a room's acoustics. They feature a cylindrical (constant-radius) design for phase-coherent accurate broadband diffusion, plus a built-in MLV Bass Trap membrane and a mid-high internal absorber. They are stackable in ceilings under 8' and may be mounted vertically or horizontally. Available in small, medium, and deluxe sizes with multiple fabric colors to choose from.



ITEM	DESCRIPTION	PRICE
CRVDFSCROSBIRC	Small curve diffusor, 14"x42"x5", birch	339.98
CRVDFMCSBIRC	Medium curve diffusor, 21"x42"x7", birch	399.98
CRVDLXCROSBIRC	Deluxe curve diffusor, 15"x43"x3", birch	639.98
DFCVS	Free-standing birch stand for curved diffusors/panels	199.98

ACOUSTIC GEOMETRY STUDIO 3D SOUNDPROOF DOOR

This USA-built sound control door has a STC value up to 56, and is ideal for recording studios, offices, band rooms, hotels, conference rooms or any application where a soundproof interior door is required. This standard-model door is shipped pre-hung and assembled, offered in ready-to-stain oak with silver hardware – custom wood-species, finish, and hardware options are available.



ITEM	DESCRIPTION	PRICE
AGST336800AKLS	Soundproof door, left swing, 30"x80"x2-3/4"	3779.98

PRIMAACOUSTIC PAINTABLES™ ACOUSTIC PANELS

These innovative acoustic panels are constructed from high-density 6lb/cubic foot glass wool with resin-hardened edges. More importantly, they feature a specially formulated textured latex surface that can be painted or UV printed to match your studio's decor – without affecting the panels' acoustic performance. Available in a variety of sizes and ship with an absolute white finish.



ITEM	DESCRIPTION	PRICE
PAINTABLES-24X24X2SQ	24x24x2" square-edged acoustic panel	284.99
PAINTABLES-24X48X2BV	24x48x2" bevel-edged acoustic panel	284.99

PRIMAACOUSTIC FLEXIFUSER VARIABLE PITCH DIFFUSER

Ideal for recording studios, broadcast stations and home theaters, the pitch diffuser deflects sound energy to create a greater sense of air and space. It mounts at receive end of room, diffusing directional acoustic energy. It also reduces standing waves and flutter echo from 500Hz and up. 6 variable pitch slats can be rotated to tailor the diffuser's sound deflection. The rear-mounted absorptive panel behind the diffuser's slats further reduces room reflections. Various patterns can be combined in clusters for maximum effect. Ships flat to reduce freight costs and assembles in minutes using standard household tools.



ITEM	DESCRIPTION	PRICE
FLEXI-FUSOR	Variable pitch diffuser with rotating slats, 48"Hx24"Wx6"D	399.99



Follow Us!

PRICES SUBJECT TO CHANGE WITHOUT NOTICE. Call today or shop online!



PRIMAACOUSTIC MAXTRAP BROADBAND CORNER BASS TRAP

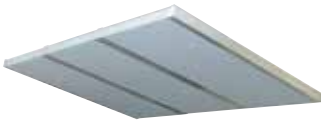
This combination 3-way broadband corner trap consists of a high-density fiberglass panel with a resonator membrane. It's easy to assemble (24"x48" flat-pack wood frame) and its unobtrusive design fits any décor. Effective from 65Hz and up.



ITEM	DESCRIPTION	PRICE
MAX-TRAP24"x48" broadband corner acoustical absorber.....	399.99

PRIMAACOUSTIC MODULAR ACOUSTIC CLOUD SYSTEM

Suspended over the console or listening position, this fabric-wrapped, high-density fiberglass panel eliminates the need to install floor-to-ceiling reflectors and comes with easy-to-assemble suspension hardware. Its unobtrusive design fits any décor and is available in beige, black and grey.



ITEM	DESCRIPTION	PRICE
STRATUS24"Hx48"Wx2"D overhead panel with frame.....	229.99

PRIMAACOUSTIC CUMULUS BROADBAND CEILING CORNER TRAP

These triangular focal point traps mount in corners and is highly effective in small rooms due to sound migration, providing absorption upwards of 125Hz. Their unobtrusive design fits any décor and they are quick and easy to mount.



ITEM	DESCRIPTION	PRICE
CUMULUSTwo 24" triangle corner traps.....	129.99

PRIMAACOUSTIC RECOIL STABILIZER

Designed for use with near-field monitors, these stabilizers eliminate resonant coupling to monitor stands and provide accurate transient response and imaging. Available in a variety of sizes, weights and firing angles, and they work with almost any monitor in any configuration – down-firing, horizontal-firing or up-firing.



ITEM	DESCRIPTION	PRICE
RX5-UFRecoil stabilizer, 10° up-firing, 32 lbs. capacity, 7.5"x9.5"x1.9".....	89.99
RX5-DFAs above, but 5° down-firing.....	89.99
RX5-HFAs above, but horizontal-firing.....	89.99
RX7-UFRecoil stabilizer, 10° up-firing, 44 lbs. capacity, 10.3"x13"x2.6".....	99.99
RX7-DFAs above, but 5° down-firing.....	99.99
RX7-HFAs above, but horizontal-firing.....	99.99
RX9-DFRecoil stabilizer, 5° down-firing, 50 lbs. capacity, 15"x11"x2.6".....	124.99
RX9-HFAs above, but horizontal-firing.....	124.99
RX12-DFRecoil stabilizer, 5° down-firing, 88 lbs. capacity, 20"x13"x2.6".....	199.99
RX12-HFAs above, but horizontal-firing.....	199.99
RX17-HFRecoil stabilizer, horizontal-firing, 88 lbs. capacity, 17"x17"x2.6".....	229.99
RX20-HFAs above, but 144 lbs. capacity, 20"x22"x2.6".....	269.99

PRIMAACOUSTIC BROADWAY LONDON SERIES ACOUSTICAL TREATMENT KITS

The London room kits provide a balanced solution that deals with both room reflections and problem frequencies. The panels are modular and can be easily distributed to meet a multitude of room configurations and be adapted as a starting point for larger rooms or more demanding applications. The kits consist of high-density 6 lb.-per-cubic-foot fiberglass panels, which are 5 times more absorbent than 1.3 lb. foam, resulting in fewer panels altogether. They are Class 1 fire rated for safe installations anywhere. No glue needed. Installation is clean and easy. Available with black, grey or beige panels.



LONDON 8

The Primacoustic London 8 is the perfect "studio in a box" for those that have small rooms but plan on growing. For rooms under 100 sq. ft.

- Kit Includes:**
- (4) 12"x36"x2" panels
 - (8) 12"x12"x1" panels
 - (20) surface impaler clips

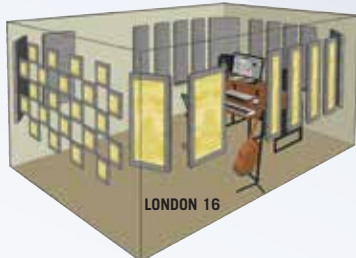
ITEM	PRICE
LONDON-8	229.99

LONDON 12

A Live-End/Dead-End kit for rooms with a square footage of about 120 sq. ft.

- Kit Includes:**
- (2) 24"x48"x2" panels
 - (8) 12"x48"x2" panels
 - (12) 12"x12"x1" panels
 - (28) surface impaler clips
 - (8) corner impaler clips

ITEM	PRICE
LONDON-12	769.99



LONDON 10™ ROOM KIT

A Live-End/Dead-End kit for rooms up to 120 sq. ft. that includes:

- (8) 12"x48"x2" beveled-edge panels
- (12) 12"x12"x1" square-edge panels
- (28) surface impaler clips

ITEM	PRICE
LONDON-10	499.99

LONDON 16

When maximum absorption and accuracy are required. For rooms 150 sq. ft. or larger.

- Kit Includes:**
- (6) 24"x48"x2" panels
 - (12) 12"x48"x2" panels
 - (24) 12"x12"x1" panels
 - (48) surface impaler clips
 - (16) corner impaler clips

ITEM	PRICE
LONDON-16	1499.99

Shop fullcompass.com today!

For expert advice - call: 800-356-5844

M-F: 9:00-5:30 Central

