



**AJA KONA3G**

- SD, HD, Dual Link HD, 2K, and 3G
- 2 SD/HD/3G SDI inputs and 2 SD/HD/3G SDI outputs
- HDMI 1.4a output for 3D workflows
- Analog video output of Y,Pb,Pr, or R,G,B, or CVBS and Y, C
- 16-channel SDI embedded audio I/O
- Up to 16-channel AES digital audio I/O (8 with breakout cable or 16 w/optional K3G-Box)
- Terminating video reference input
- Separate LTC input and output ports
- Master or slave configurable RS422 control port
- Video up, down, and cross conversion
- Internal hardware keyer
- 2K video format support



**KONA3G**..... PCIe capture card for PC/MAC..... 1995.00  
**K3G-BOX**..... External breakout box for KONA3G, 1RU..... 395.00



**AJA IOHD**

- Apple ProRes 422/HQ Codec
- SD, HD 720/1080, full-raster 10bit 4:2:2, realtime, in hardware
- Up/down/cross-conversion, 10bit, realtime, in hardware
- SD-SDI and HD-SDI I/O (2)
- Component I/O (SD and HD), Composite and S-video I/O
- HDMI video w/2-channel audio I/O
- Embedded SDI 8-channel audio I/O
- AES/EBU 8-channel unbalanced audio I/O
- Analog 4-channel balanced audio I/O (XLR), Analog 2-channel unbalanced audio output (RCA)
- Genlock with loophrough, RS-422 machine control, LTC Timecode I/O
- Connects to Mac via a single FireWire 800 cable



**IOHD**.....High-definition video/audio I/O, for Mac OSX only.... 3495.00

Blackmagicdesign

**BLACKMAGIC DESIGN DECKLINK HD EXTREME 3D+™**

- Dual Link and the new 3Gb/s SDI for 4:4:4 quality
- New HDMI 1.4 capture and playback
- SD and HD SDI, HDMI and analog component
- Realtime 2K capture and playback
- Direct HDMI connection supports HDMI capture from HDMI-compatible cameras, set-top boxes, decks and video games
- Supports full HD keying, 2K film and 1080p video formats
- 2ch of balanced XLR audio, 2ch of AES/EBU digital audio
- Simultaneous HD and SD playback
- PCI Express 4-lane, compatible with 4-,8-,16-lane PCIe slots
- RS422 deck control
- Includes Disk Speed Test, LiveKey, Blackmagic driver included



**DECKLINK-HD-EXT-3D+**...Hi-definition PCI express video capture card w/o genlock..... 945.25



**AJA KONA LHI & LHE**

- HD/SD-SDI, analog HD/SD
- Apple ProRes supported
- 12bit HD/SD analog component or composite S-Video I/O
- 10bit hardware HD to SD down conversion
- HD or SD-SDI input, 2 independent HD/SD-SDI outputs
- 2-ch bal. XLR AES & 2-ch balanced XLR analog audio I/O
- 8-ch SDI embedded audio I/O
- HD/SD Genlock and RS-422 machine control
- Supports Final Cut Pro, Motion, After Effects, Combustion, etc.
- Includes breakout cables, 1RU breakout boxes optional
- KONA-LHI also includes SD to HD up-conversion, HD to HD cross-conversion, 3G SDI support and HDMI input/output



**KONA-LHI**.....PCI express capture card for Mac or PC..... 1495.00  
**KONA-LHE**.....PCI express capture card for Mac or PC..... 1295.00  
**KLHI-BOX**.....1 RU external breakout box for Kona LHI..... 349.00  
**KLBOX-LH**.....1 RU external breakout box for Kona LHE..... 299.00



**AJA IO EXPRESS**

- HD/SD-SDI input/output
- HDMI v1.3a with Deep Color support at 30- and 36-bits per pixel
- HD/SD component video output
- 2-channel RCA audio output
- LTC I/O (selectable LTC Input/Reference Video Input), RS422
- Expresscard/PCIe interfaces, over 1-lane PCIe cable (Expresscard standard, PCIe card version available for Mac Pro or Windows workstation)
- For Mac OSX and Windows XP/Vista
- Support for Final Cut Studio and Adobe CS5
- 3-meter PCIe tether cable
- 12v DC power supply



**IO-EXPRESS**..... Portable video/audio, Express Card..... 995.00  
**IO-EXPRESS-PCIE**.....Portable video/audio interface, PCIe..... 995.00

Blackmagicdesign

**BLACKMAGIC DESIGN DECKLINK STUDIO & SDI**

- SDI solution, perfect for use with SDI decks/SDI routers
- Incredible quality HD/SD-SDI capture and playback
- 10bit SDI video card
- Works in both SD and HD
- Includes blackburst, tri-sync reference input
- 8 channels of SDI embedded audio and RS422 deck control
- HD/SD-SDI input and output, reference in, and deck control RS-422 connections
- Studio version adds analog component, composite, S-Video, 4 channel balanced analog audio, 2 channels AES/EBU,
- Studio version also adds built-in hardware down conversion (down converter always outputs to SD-SDI, Composite and S-Video outputs when working in HD video formats)
- Windows or Intel-based Mac Pro compatible



**DECKLINK-SDI**..... SD/HD-SDI capture and playback PCIe card..... 280.25  
**DECKLINK-DUO**..... Dual HD/SD-SDI capture and playback PCIe card..... 470.25  
**DECKLINK-OPTI-FIBER**..... Same as Decklink SDI, but also adds optical fiber I/O..... 470.25  
**DECKLINK-STUDIO-II** SD/HD-SDI/analog capture and playback PCIe card..... 660.25



**AJA KONA LSE**

- 12bit analog I/O: Component/composite/S-video
- Apple ProRes 422/HQ supported
- SDI input, 2 independent SDI outputs
- AES I/O; sample rate conversion on input (2ch, XLR)
- Balanced analog audio I/O (2ch, XLR)
- 8ch, 48kHz SDI embedded audio support
- Genlock and RS-422 machine control
- AJA QuickTime drivers
- Final Cut Pro, Motion, After Effects, Combustion compatible
- Supports all popular standard definition formats: 8/10bit uncompressed, JPEG, DV25/50 and 3:2 pulldown for 24Hz support
- Includes breakout cables, KL-Box breakout optional



**KONA-LSE**.....PCI express capture card for Mac and PC..... 990.00  
**KLBOX-LH**.....1 RU external breakout box for Kona LSE..... 299.00

Blackmagicdesign

**BLACKMAGIC DESIGN INTENSITY PRO**

- HDMI digital video and audio I/O
- Capture direct from HDV cameras bypassing HDV compression chips
- Capture true 1920x1080 uncompressed
- Supports 525 NTSC, 625 PAL, 720HD, 1080HD switchable
- Real time effect processing
- PCI Express architecture
- Includes On-Air 2.0 software (Mac only)
- Analog video component, NTSC, PAL or S-Video I/O
- 2 channels RCA audio I/O and S/PDIF output
- Will NOT capture from copy protected HDMI sources



**INTENSITY-PRO**.....HDMI capture and playback w/analog video & audio I/O..... 189.00

Blackmagicdesign

**BLACKMAGIC DESIGN HDLINK PRO MONITORING SOLUTION**

- 3Gb/s SDI monitoring solution for HD & 2K on DVI or HDMI displays
- SDI 4:2:2, 4:4:4 and 2K support
- Video formats supported on DVI or DisplayPort displays: 2K 2048 x 1556 at 23.98PsF, 24PsF, 1080 lines at 23.98PsF, 24PsF, 25PsF, 48i, 50i, 59.94i, 60i, 720 lines at 50p, 59.94p, 60p, Standard Definition NTSC and PAL
- Video formats supported on HDMI Displays: 1080 HD at 23.98PsF, 24PsF, 25PsF, 48i, 50i, 59.94i, 60i, 720 lines at 50p, 59.94p, 60p, Standard Definition NTSC and PAL
- Color precision support: 4:2:2 10-bit, 4:4:4 10-bit and 2K 10-bit. Color space support: 4:2:2 YUV, 4:4:4 RGB and 2K RGB
- Adaptive pull-down processor guarantees smooth motion display on DVI-D computer displays
- 6-channel analog 24-bit audio output using RCA connectors de-embedded from SDI input
- Firmware upgrade via USB 2.0 on Mac OS X, Windows XP/Vista



**HDL-DVIPRO**..... 3Gb/s SDI monitoring solution (HD & 2K).. 470.25  
**HDL-PRODISPORT**..... Same as above, but with DisplayPort connection..... 470.25  
**HDLINK-OPTICAL-FIBER**..... Same as above, but with Optical Fiber connection..... 755.25

PLEASE ALWAYS CONSULT MANUFACTURER'S WEBSITE FOR MOST CURRENT SYSTEM REQUIREMENTS!



MORE INFO AT FULLCOMPASS.COM



FULL COMPASS HIGHLY RECOMMENDS CONSULTING WITH OUR INTEGRATION DEPARTMENT BEFORE PURCHASING VIDEO CAPTURE CARDS!

Blackmagicdesign



**BLACKMAGIC DESIGN INTENSITY SHUTTLE CAPTURE/PLAYBACK DEVICE**

- Capture and playback HDMI and component analog video in SD and HD
- USB 3.0 connection
- 4.8GB/s, handles 10-bit uncompressed 1080p video
- Connect to cameras and digital set top boxes via HDMI
- Independent connections for component, composite, and S-video
- Dual rate support allows HDMI and Analog Component to switch between HD and SD



INTENSITY-SHUTTLE..... Capture/playback device, USB 3.0 ..... 189.05

grass valley



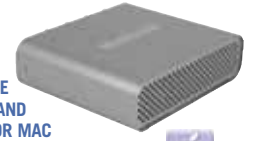
**GRASS VALLEY HD SPARK**

- HDMI output (HD SPARK) for full resolution real-time monitoring using EDIUS NLE software or HD/SD-SDI output (HD SPARK Pro & HD SPARK Pro Plus)
- Embedded HDMI audio out and separate RCA jacks for audio monitoring
- Video and audio output stays in sync with editing windows for editing and trimming
- Edit any mix of SD- and HD resolution video content together in real time
- Works with different native video formats, including DV, HDV, AVCHD, uncompressed, and more
- 2-channel AES digital audio output via BNC connector (HD SPARK Pro and HD SPARK Pro Plus only)
- Real-time SD/HD resolution, aspect-ratio, frame-rate conversion/output, including 16:9-to-4:3 and NTSC-to-PAL
- New GPU-accelerated 3D transitions
- Real-time editing performance increases as CPU power increases
- Supports newer file-based formats, including Infinity™ JPEG 2000, XDCAM and XDCAM EX, P2 (DVCPRO and AVC-Intra), & GFCam
- Compatible with Windows XP and Windows Vista



HD-SPARK.....PCI express card only..... 335.46  
 HD-SPARKPRO.....PCI express card only, HD/SD-SDI..... 503.62  
 HD-SPARKPRO-PLUS..As above with w/ EDIUS v. 6 software..... 839.94

matrox  
 Digital Video Solutions™



**MATROX MX0 PORTABLE MONITORING, OUTPUT AND CONVERSION DEVICE FOR MAC**

- Inexpensive HD and SD monitoring – trust your Apple Cinema Display or other DVI monitor, even for color grading
- Frame accurate, broadcast-quality audio/video output in HD and SD with guaranteed a/v sync
- Genlockable HD/SD SDI, HD/SD analog component, Y/C, and composite outputs with up to 8 channels SDI embedded audio output and stereo audio monitoring
- Realtime downscaling of HD projects to SD resolution with proper color space and aspect ratio conversion for monitoring and output
- WYSIWYG video output from QuickTime-based applications
- Genlockable HD/SD scan conversion for flicker-free video output of your computer desktop with any application
- Portable, hot-swappable versatility



MX0/N.....Monitoring, output and scan conversion device..... 995.00

Blackmagicdesign



**BLACKMAGIC DESIGN ULTRA STUDIO PRO**

- Broadcast quality SD/HD capture and playback solution
- USB 3.0 connection
- High speed editing with 4.8GB/s bandwidth
- Fast video processor for 10bit quality hardware up, down and cross conversion.
- Connections include SDI built-in and HDMI, analog component, composite, s-video, 4-channel analog audio, 2-channel AES, EBU audio via 7' breakout cable (included).
- Standard definition digital internal keyer
- Includes Black Magic Media Express software



ULTRASTUDIO-PRO..... Capture/Playback Device, USB 3.0 ..... 850.25

grass valley



**GRASS VALLEY HD STORM HDMI-BASED EDITING**

- HDMI I/O for HDMI device connectivity, real-time monitoring with EDIUS 6
- Works with many native video formats, including DV, HDV, AVCHD, uncompressed, and more
- Real-time SD/HD resolution, aspect ratio, frame rate conversion/output, including 16:9 to 4:3 and NTSC to PAL
- Real-time SD/HD effects, keyers, transitions & titles
- Supports newer file-based formats, including Infinity JPEG 2000, XDCAM and XDCAM EX, P2 (DVCPRO and AVC-Intra), & GFCAM
- Onboard Canopus HQ hardware encoder for fast, high-quality capture and export of video to Canopus HQ AVI files
- HD STORM Bay option for HD/SD analog component, S-Video, and composite input/output (included with HDSTORM Plus)
- Compatible with Windows® XP and Windows Vista



HD-STORM.....PCIe card w/ Edius 6 software.....1073.66  
 HD-STORM-PLUS..PCIe card w/ Edius 6 software & HD STORM Bay...1321.58  
 HD-STORMBAY.....5.25" HD STORM Bay expansion .....461.57

matrox  
 Digital Video Solutions™



**MATROX MX02 COMPLETE I/O**

- Works with Intel-based Mac laptops or towers
- Can run off a field battery (or its AC adapter)
- HD/SD SDI, HD/SD analog component, Y/C, and composite inputs and outputs
- Genlock – SD analog black burst (bi-level) or HD tri-level sync
- HDMI input, output, and monitoring with calibration controls including blue-only
- 10-bit realtime hardware up/down/cross conversion
- 5 selectable simultaneous video outputs – HD and/or SD on HDMI, SDI, analog
- Professional audio inputs and outputs with 5.1 surround sound monitoring
- RS422 machine control for frame-accurate capture & print-to-tape
- Codecs – Apple ProRes 422 HQ, 10-bit uncompressed HD, and many more
- Supports file-based workflows – XDCAM, XDCAM HD, XDCAM EX, P2, P2HD
- Works with Apple Pro Applications and Adobe After Effects, Premiere Pro & Encore and all QuickTime applications that support the V-out component
- Includes PCI Express and ExpressCard/34 adapters
- Includes standard North American IEC-C13 power cord



MX02/N..... Portable I/O solution, Mac only ..... 1595.00  
 MX02MAX/N... Same as above but w/ Matrox MAX encoding .... 1995.00

Blackmagicdesign



**BLACKMAGIC DESIGN MULTIBRIDGE PRO PCI EXPRESS CAPTURE/PLAYBACK MODULES**

- External PCI Express capture and playback solutions
- Instantly switch between SD, HD and 2K, in 4:2:2 or 4:4:4 video quality
- High-quality editing system w/high speed 10GB/s PCI Express for a PC/Mac
- Used independently as bi-directional SDI video converters
- The MultibrIDGE Pro provides Dual-Link 3 GB/s SDI, HDMI and analog capture and playback in SD, HD and 2K, with 8 AES/EBU and 2 channels of analog audio
- MultibrIDGE Eclipse is a larger unit that features 12 channels of AES/EBU, 4 channels of balanced audio, HDMI in and out, Dual Link 3 GB/s SDI in and out, a front panel with status lights and 32 audio level meters



MULTIBRIDGE-PRO2...PCI express capture/playback module.. 1515.25  
 MULTIBRIDGE-ECLIPSE...PCI express capture/playback w/12-channel AES/EBU..... 2275.25

grass valley



**GRASS VALLEY STORM™3G MULTI-FORMAT EDITING**

- 3G-SDI input and output with embedded audio and timecode
- HDMI output for full-resolution, real-time monitoring
- Video and audio output is synced w/ editing windows for accurate trimming
- Reference input supports bi-level or tri-level sync
- RS422 master machine-control support
- Edit mix of SD and HD resolution in real time
- Works with many different native video formats, including AVSHD, AVC-Intra, MPEG-2, uncompressed, and more
- Supports file-base formats including Infinity JPEG 200, XDCAM HD and XDCAM EX, and more.
- Compatible with Windows 7, Vista, and XP



STORM3G.....PCIe card w/ Edius NLE software..... 1652.18  
 STORM3G-REFTC...Time Code In/Reference Out option board .. 671.76

matrox  
 Digital Video Solutions™



**MATROX MX02 MINI HIGH DEFINITION HDMI AND ANALOG I/O**

- Works with Mac and PC, laptops and desktops
- Small, lightweight, external box that's easily connected to your cameras and monitors
- Capture and playback high-definition video via HDMI and analog component; or NTSC and PAL via analog component, S-Video, and composite
- Turns your HDMI screen into a professional-grade video monitor with color calibration tools including blue-only
- High-quality 10-bit hardware scaling engine for realtime upscaling, downscaling, & cross conversion on capture & playback
- Stereo RCA & up to 8 channels of HDMI audio input & output
- 5.1 and 7.1 surround sound monitoring on the HDMI output
- Easily edit AVCHD footage by capturing into an edit-friendly compressed or uncompressed format
- Works with your favorite applications including Final Cut Pro, Adobe Premiere Pro, Adobe Photoshop, and many more
- Available w/ Matrox MAX - faster than realtime creation of H.264 files
- 3yr hardware warranty and complimentary telephone support



MX02MINID.....Mini w/ PCIe card ..... 449.00  
 MX02MINIL.....Mini w/ Express Card 34 ..... 449.00  
 MX02MINIMAXD...Mini w/ PCIe card and MAX ..... 849.00  
 MX02MINIMAXL...Mini w/ Express Card 34 and MAX..... 849.00

AUDIO



COMPUTER AV



VIDEO



LIGHTS



MUSIC



ACCESSORIES



PLEASE ALWAYS CONSULT MANUFACTURER'S WEBSITE FOR MOST CURRENT SYSTEM REQUIREMENTS!

Quick Purchase: 800-476-9886

M-F: 8:30-5:30 CST



FULLCOMPASS.COM

Full Service: 800-356-5844

M-F: 9:00-5:30 CST



# MOTU

## MOTU HD EXPRESS HDMI COMPACT VIDEO INTERFACE

- Supports Apple ProRes and other popular host-based codecs supported by Apple Final Cut Pro and Adobe Premiere Pro
  - HDMI video capture and monitoring for Mac & PC, via PCI Express (tower) or ExpressCard (laptop) connectivity
  - Captures and plays uncompressed HD and SD in 10-bit 4:2:2 color depth and up to 1920x1080 resolution
  - Capture and monitor analog component HD or SD, plus composite and S-Video
  - HDMI and HD/SD component in/out and composite and S-Video inputs only
  - HDMI provides up to 8 simultaneous channels of embedded audio, analog RCA outputs for monitoring 5.1 or 7.1 surround sound
  - Audio inputs include from HDMI, 2x RCA or S/PDIF, outputs are HDMI, 8x RCA or S/PDIF
  - Front-panel headphone jack with dedicated volume control
  - Half RU form factor
- HD-EXPRESS-HDMI .....HDMI capturing interface w/PCI Express card .....495.00
- HD-EXPRESS-HDMI-LPTP .....Laptop version of above w/ExpressCard adapter .....495.00



# MOTU

## MOTU HDX-SDI DIGITAL/ANALOG VIDEO PRODUCTION INTERFACE

- Full-raster ProRes workflow with Final Cut Pro
- HD/SD (capture/playback) video interface for Mac and Windows laptops or towers
- Supports Apple Final Cut Pro (Mac) and Adobe Premiere Pro (Windows)
- Capture and play back uncompressed 10-bit HD and SD from all formats
- HDMI output for 1080 HD monitoring
- Supports video reference, timecode & RS422 machine control
- Connect analog device through S-Video, composite or component connectors
- 8 1/4" TRS audio in/out
- 1RU form factor, rack ears included
- Windows drivers coming soon



- HDX-SDI .....PCI Express video interface Mac/Windows .....849.00
- HDX-SDI-EXPRESS .....ExpressCard/34 video interface Mac/Windows .....849.00

# MOTU

## MOTU V4HD FIREWIRE VIDEO PRODUCTION INTERFACE

- Full-raster ProRes workflow with Final Cut Pro
  - HD/SD (capture/playback) FireWire video interface for Mac and Windows
  - Supports Apple Final Cut Pro (Mac) and Adobe Premiere Pro (Windows)
  - DVCPRO HD capture and play back 720 and 1080 HD over FireWire providing 100 Mb/sec quality and CPU-efficient, frame-based (non-GOP) native editing
  - Capture and play back uncompressed 10bit SD from all formats
  - HDMI output for 1080 HD monitoring
  - Real time SD-to-HD up-convert and HD-to-SD down-convert
  - Real-time 2:3 or 2:3:3:2 pull-down insertion and removal
  - Connect multiple HD and SD sources and destinations simultaneously. Switch HD/SD sources on the fly while converting to multiple HD/SD destinations.
  - Stand-alone operation – converts selected input source to supported output formats with SD-to-HD up-convert, HD-to-SD down-convert and pull-down insertion/removal
- V4HD .....FireWire video interface Mac/Windows ..... 1995.00



Blackmagicdesign

## BLACKMAGIC DESIGN ATEM TELEVISION

**ATEM STUDIO** This live production switcher combines a professional switcher with a broadcast quality H.264 encoder. With a user-intuitive software control panel, you can control the ATEM from a Mac or PC laptop. The ATEM features 10-bit digital design for high quality video with a low processing delay. It also has an upstream keyer with chroma, pattern, and linear keying and a built-in multi view allowing 10 channels of video to be displayed on a one HDMI monitor. Connections include (4) SDI video inputs (10-bit SD/HD), (4) HDMI video inputs, (1) AES/EBU, (1) USB 2.0 and Ethernet.

ITEM	DESCRIPTION	PRICE
ATEM-TV-STUDIO.....	Pro Switcher w/H.265 Encoder.....	945.25



**NEW!**

## BLACKMAGIC DESIGN ATEM PRODUCTION SWITCHERS

Both the 1 M/E and 2 M/E are compact, portable production switchers. Control the switchers with the software control panel via a Mac or PC laptop or the dedicated broadcast panels. The 1 M/E has (4) SDI inputs, (4) HDMI input, analog input and USB 3.0, frame resynchronizer, DVE transitions, 6 keyers, multi view and more. The 2 M/E has (12) SDI inputs, (4) HDMI inputs, analog input, USB 3.0. Other features of the 2 M/E include SuperSource multi layering composite engine, 2 multi view outputs, and a second M/E row.

ITEM	DESCRIPTION	PRICE
ATEM-1-ME-PRODSWITCH .....	ATEM 1 M/E switcher, 2RU.....	2370.25
ATEM-2-ME-PRODSWITCH .....	ATEM 2 M/E switcher, 3RU.....	..CALL



**NEW!**

## BLACKMAGIC DESIGN ATEM BROADCAST PANELS

Gain greater control of your ATEM switcher with the ATEM broadcast panels. The compact 1 M/E panel fits within a rack width, controls sources, transitions, keyers, DVE control and more. It has 10 direct cross points and one fader bar. The 2 M/E panel is designed for complex live broadcast events and features 20 direct cross points, 2 fader bars and a second M/E row. Both panels connect via Ethernet and have a loop thru for a computer.

ITEM	DESCRIPTION	PRICE
ATEM-1-ME-BROADPANEL.....	1 M/E broadcast panel .....	..CALL
ATEM-2-ME-BROADPANEL.....	2 M/E broadcast panel .....	..CALL



**NEW!**

# datavideo®

## DATAVIDEO SE-500 ANALOG VIDEO MIXER/SWITCHER

A 4-channel mixer featuring S-video (Y/C) and composite video inputs. Features include dissolve, fade, wipes, splits, PIP and color processor. Channels are internally synced via a built-in dual-channel TBC 4:2:2 frame synchronizer. Has component (YUV) via breakout cable, S-video (Y/C) or composite video output. The SE-500 displays all 4 input sources via a single quad output so only 2 video monitors are needed – one for all inputs, one for output. The input display will also automatically change to preview the next transition if selected. Unit can be manually operated or via RS232 interface. The HS-500 is a mobile studio that pairs the SE-500 mixer/switcher with the TLM-702 dual 7" 16:9 widescreen monitor unit in a lightweight suitcase with rear access for cables.

ITEM	DESCRIPTION	PRICE
SE-500 .....	4-channel video mixer .....	960.00
TLM702 .....	Dual 7" 16:9 widescreen monitor unit .....	816.00
HS-500 .....	Hand-carried studio with SE-500 switcher & TLM-702 monitor unit.....	2112.00
SE-500-KIT.....	4-channel video mixer with (2) TLM-702 monitors.....	1968.00
SE-500-DNKIT-NTSC .....	4-channel video mixer with TLM-702 monitor, DN-500 recorder/player, RKM-572 monitor holder .....	..CALL



PLEASE ALWAYS CONSULT MANUFACTURER'S WEBSITE FOR MOST CURRENT SYSTEM REQUIREMENTS!



MORE INFO AT FULLCOMPASS.COM



FULL COMPASS HIGHLY RECOMMENDS CONSULTING WITH OUR INTEGRATION DEPARTMENT BEFORE PURCHASING VIDEO CAPTURE CARDS!