

SS Series Rails

Features

- Versatile rails in three lengths are engineered to distribute speaker assembly weight to the ceiling structure.
- Formed construction is lightweight with rigid support.
- Includes holes to mount nearly any speaker backbox
- Includes holes for seismic anchoring where required.

A & E Specifications

Channel mounting rails shall be Lowell Model ____ (SS24, SS30, SS48). Rails shall be formed from galvanized steel and be engineered to support and distribute the weight of a speaker assembly to the ceiling support system in a 2' x 2' or 2' x 4' suspended ceiling installation.

Description

Lowell channel rail Series SS is engineered to distribute the speaker assembly weight to the ceiling support system in a suspended 2' x 2' or 2' x 4' tile ceiling system. Rails are often required, for safety reasons, by local building codes, and for aesthetics to reduce the potential of unsightly ceiling tile sag.

Lowell's channel rail Series SS is galvanized steel with holes to screw mount nearly any recessed ceiling style backbox. Additionally, rails include holes for seismic anchoring where required. Rails are packaged in pairs and include mounting hardware.

Choose rail lengths of 23.75" (SS24), 30" (SS30), or 47.75" (SS48) to meet installation requirements.

CHANNEL RAIL SPECIFICATIONS

Model	Description	Length	Material	Hardware included
SS24	Channel rail (pair)	23.75"	20ga. galvanized steel	(4) 8-18 x 3/8" phillips pan-head sheet metal screws
SS30	Channel rail (pair)	30"	16ga. galvanized steel	(4) 8-32 x 1/2" phillips truss-head machine screws & hex nuts
SS48	Channel rail (pair)	47.75"	16ga. galvanized steel	(4) 8-32 x 1/2" phillips truss-head machine screws & hex nuts



SS Series

Channel support rails

A U D I O



12"/10"
Speakers &
Accessories

8"
Speakers &
Accessories

6"
Speakers &
Accessories

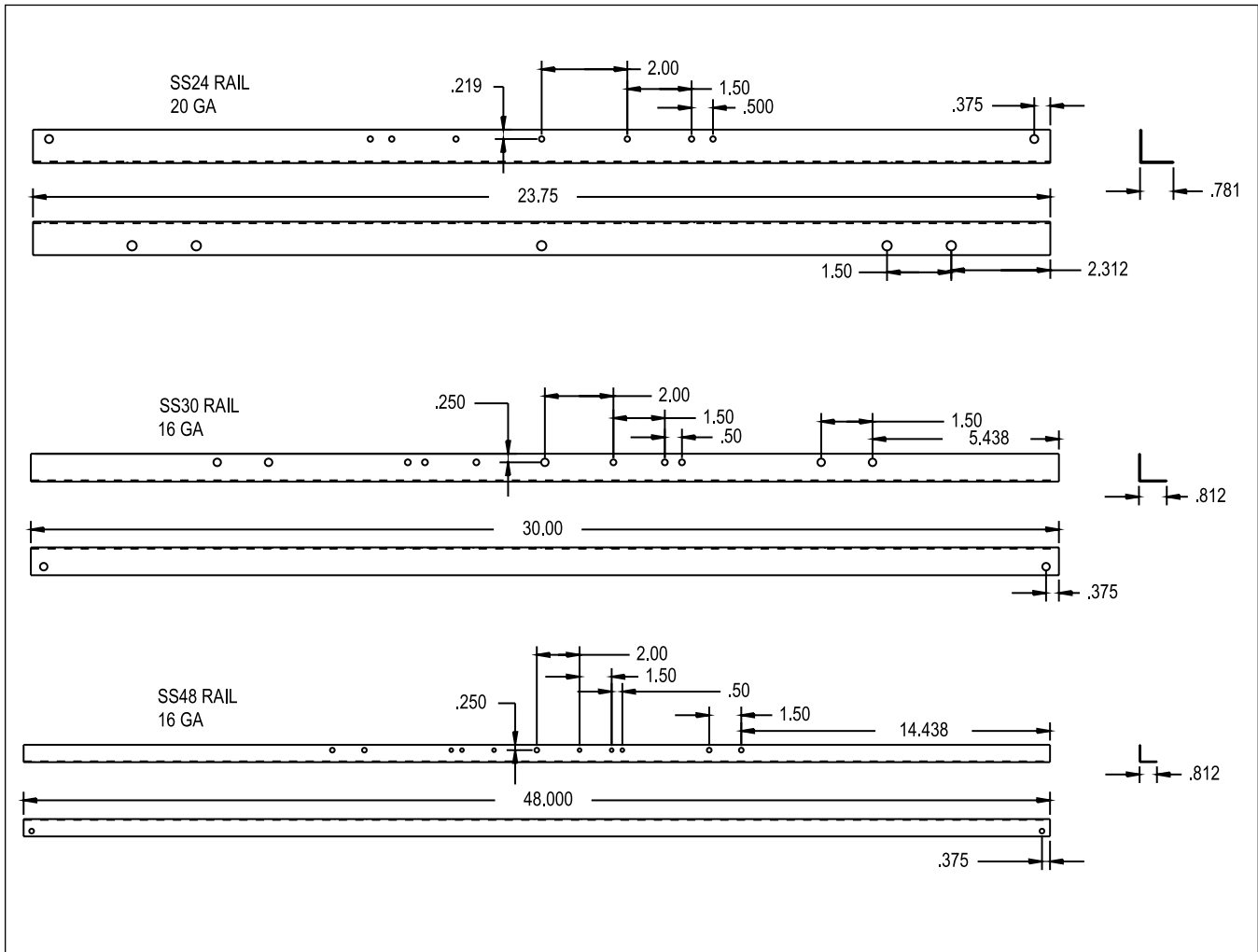
4"
Speakers &
Accessories

Horn
Speakers &
Accessories

Masking
Speakers &
Generators

Control
Accessories
& Electronics

T-Bridges / Rails



SS Series Rails