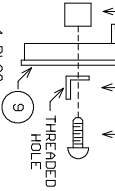


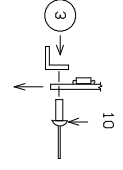
DO NOT STUFF SLIDER IF BUILDING MQ302L MODEL  
 \*DISCARD BARE SLIDER BOARD AFTER FLOW\*

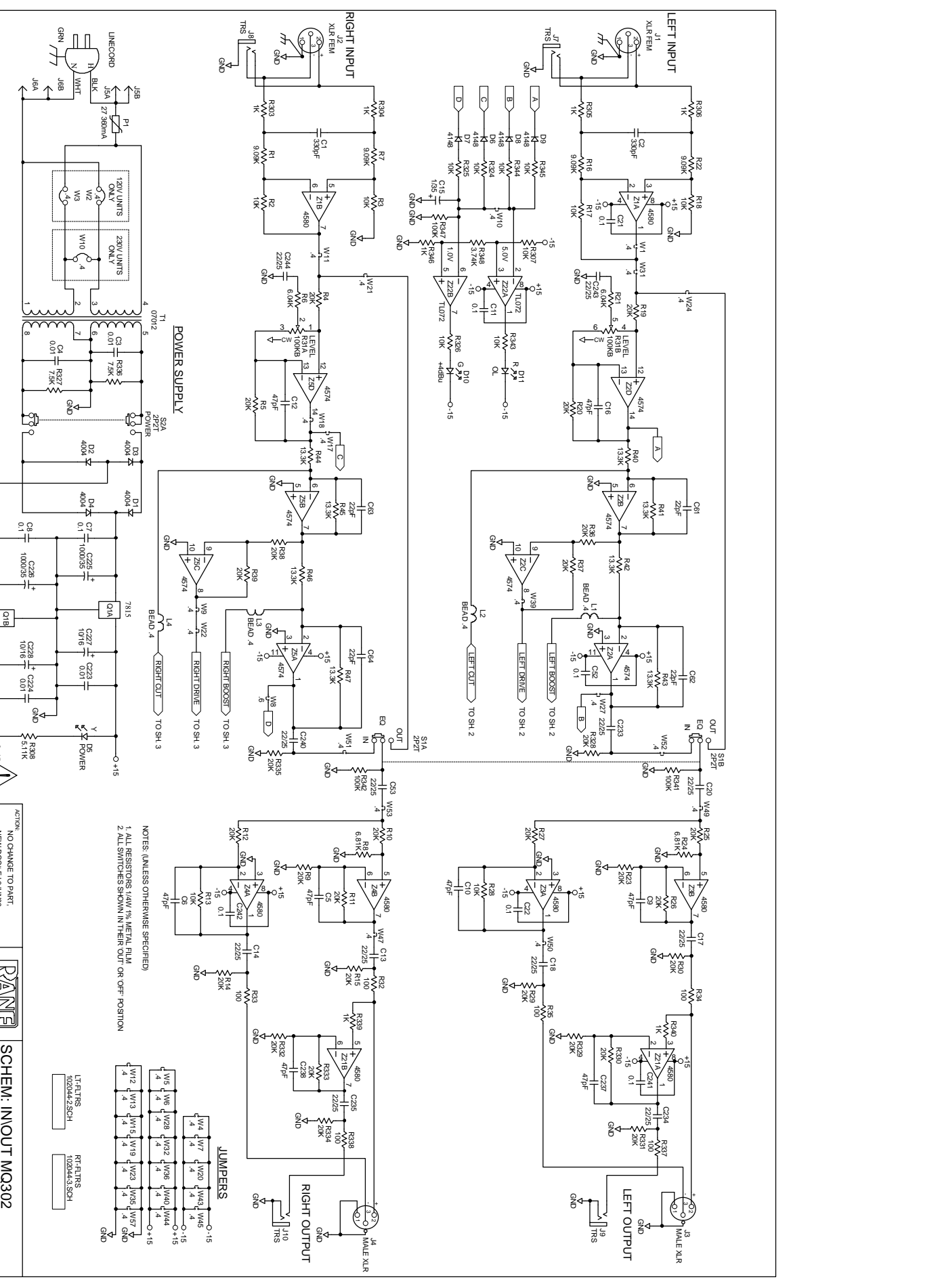
4 PLCS  
 MQ302S ONLY



Rane Corp. (425)355-6000  
 102045 VALUE: MAIN/SLIDER MQ302  
 IC 2059 WAS OP11, NEW DOC# FJ 3JUN98

15 \*\*\*INSTALLED ON  
 MQ302L VERSION ONLY





**NOTES (UNLESS OTHERWISE SPECIFIED)**

1. ALL RESISTORS 1/4W 1% METAL FILM
2. ALL SWITCHES SHOWN IN THEIR OUT OR OFF POSITION

**JUMPERS**

W12	W13	W14	W15	W16	W17	W18	W19	W20	W21	W22	W23	W24	W25	W26	W27	W28	W29	W30
4	4	4	4	4	4	4	4	4	4	4	4	4	4	4	4	4	4	4

LT-FILTERS 1020442.SCH  
RT-FILTERS 1020443.SCH

ACTION	NO CHANGE TO PART.
DRAWING BY	NEW DOOH-FJ-SUNBBS
CHECKED BY	R.JEFFS
DESIGNED BY	R.JEFFS
DATE	102044
REV	3

**SCHEM. IN/OUT MQ302**

