



## SPECIFICATIONS

<b>Loudspeaker Type:</b>	2-way, horn loaded, coaxial, weather-resistant
<b>Operating Range:</b>	100 Hz to 16 kHz 160 Hz to 12.5 kHz (±3 dB)
<b>Max Input Ratings:</b>	200W continuous, 500W program 40 volts RMS, 89 volts momentary peak
<b>Recommended Power Amplifier:</b>	420W to 600W @ 8 ohms
<b>Sensitivity (1W/1m):</b>	97 dB SPL (160 Hz to 10 kHz 1/3 octave bands) 97 dB SPL (250 Hz to 4 kHz speech range)
<b>Maximum Output:</b>	120 dB SPL / 127 dB SPL (peak)
<b>Nominal Impedance:</b>	8 ohms
<b>Minimum Impedance:</b>	4.6 ohms @ 10.4 kHz
<b>Nominal -6dB Beamwidth:</b>	90°H (+7° / -13°, 2 kHz to 10 kHz) 40°V (+35° / -10°, 2 kHz to 10 kHz)
<b>Axial Q / DI:</b>	13.5 / 11.3, 2 kHz to 10 kHz
<b>Crossover Frequency:</b>	2 kHz
<b>Recommended Signal Processing:</b>	100 Hz high pass filter
<b>Drivers:</b>	LF (1) 8" cast frame, Cool-Coil™ HF (1) 3/4" exit, titanium free, Ferrofluid-cooled
<b>Driver Protection:</b>	DYNA-TECH protection circuitry
<b>Input Connection:</b>	16-2 SJOW (12 ft / 4 m)
<b>Controls:</b>	None
<b>Enclosure:</b>	Rotomolded HDPE, light gray color
<b>Enclosure Hardware:</b>	None
<b>Mounting/Rigging Provisions:</b>	(5) rigging points (M8 hardware) 1-3/8" pole mount socket
<b>Grille:</b>	16-gauge perforated stainless steel, 3-layer WeatherStop™ grille
<b>Required Accessories:</b>	24 dB/Oct high pass filter
<b>Supplied Accessories:</b>	(1) Stainless steel (304) yoke bracket
<b>Optional Accessories:</b>	Pole mount system
<b>Dimensions—Height:</b>	11.3 inches / 287 mm
<b>Width:</b>	11.3 inches / 287 mm
<b>Depth:</b>	11.3 inches / 287 mm
<b>Weight:</b>	20 lbs / 9.1 kg
<b>Shipping Weight:</b>	23.5 lbs / 10.7 kg



## APPLICATIONS

- Convention centers
- Fill speaker for stadia, athletic fields, arenas and race tracks
- Outdoor background music / paging systems
- Theme and amusement parks
- Fairgrounds and rodeos
- Malls, cruise ships, skating rinks
- Swimming pools

## FEATURES

- High fidelity
- All horn loaded
- Optional 200W, 70V autoformer version available (model R.25-94TZ)
- Rotomolded, UV resistant enclosure
- High efficiency
- Integral mounting points
- High power passive crossover
- Five-year product warranty / Fifteen-year enclosure warranty

## DESCRIPTION

The R.25-94Z is a 2-way, full-range loudspeaker system designed to provide high quality voice and music reproduction in applications requiring extreme weather resistance. It is designed to withstand long-term exposure to tough, environmental conditions and to provide performance normally associated only with indoor loudspeakers.

The R.25-94Z has an 8-inch (203mm) cone LF driver and a 3/4-inch (20 mm) exit HF compression driver with a weather resistant diaphragm. The HF driver is coupled to a nominal 90° x 40° horn. The HF assembly is coaxially mounted with the LF driver. The enclosure and HF horn are molded of UV resistant gray polyethylene. All exposed hardware is stainless steel. The Weather-Stop™ grille assembly, retained by stainless steel screws to the front of the enclosure, consists of three layers.

### NOTES:

1. Sensitivity: Free field pink noise measurement at 20 ft (6.1 m) at 60% power; extrapolated to 1 meter and an input of 2.83 volts RMS.
2. Watts: All wattage figures are calculated using the rated nominal impedance.



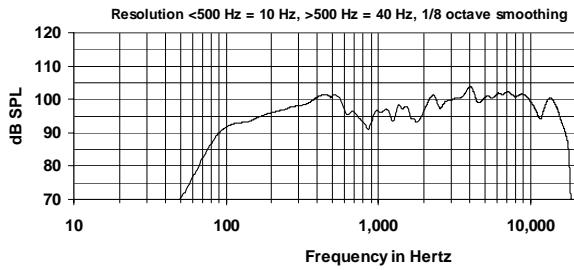


# R.25-94Z

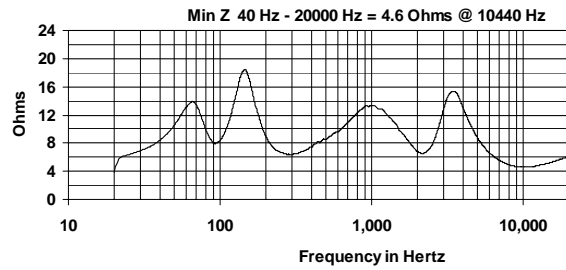
TWO-WAY, FULL-RANGE, WEATHER-RESISTANT LOUDSPEAKER

True to Specification

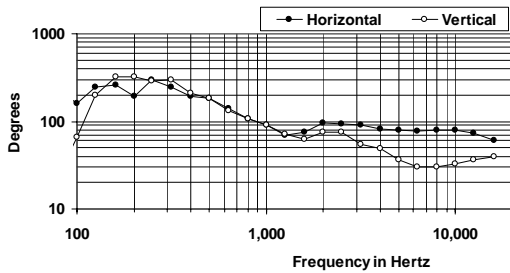
## FREQUENCY RESPONSE



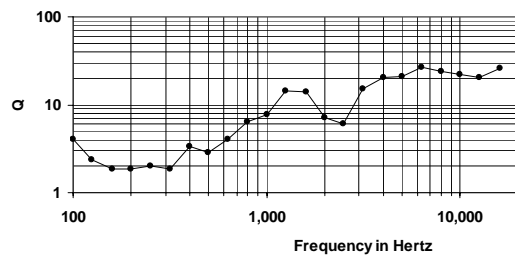
## IMPEDANCE



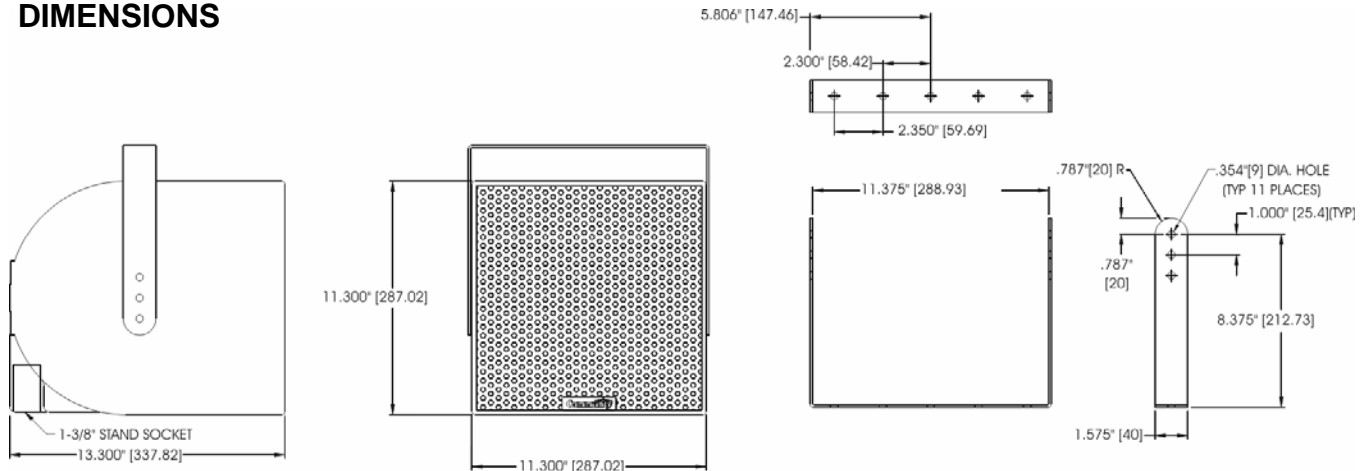
## BEAMWIDTH



## AXIAL Q



## DIMENSIONS



## ARCHITECTURAL SPECIFICATIONS

The loudspeaker system shall be a two-way, full-range bass reflex design with a single cast 8" and one 3/4" exit HF driver coaxially mounted on a 90° x 40° horn. Drivers shall be connected to an integral crossover with a crossover frequency of 2 kHz with driver protection using DYNA-TECH active protection circuitry. The cabinet shall be a rotomolded polyethylene enclosure providing weather and UV resistance with a three-layer weather resistant grille. The input connection shall be one 12' (4m) SJOW #16-gauge cable with stripped ends. The enclosure shall incorporate five M8 rigging points for multiple mounting options. In addition, the loudspeaker will be supplied with one stainless steel yoke bracket. The system shall have an amplitude response of 160 Hz - 12.5 kHz (+/- 3 dB), input capability of 40 V RMS, 97 dB Sensitivity at one meter and 2.83 V, 8 Ohm nominal impedance. The nominal dispersion shall be 90° H x 40° V from 2 kHz to 10 kHz. The dimensions of the enclosure are defined as 11.3" x 11.3" x 13.3" (HWD) at a weight of 20 lbs.

*Community strives to improve its products on a continual basis. Specifications are therefore subject to change without notice.*



Community Professional Loudspeakers, 333 East Fifth Street, Chester, PA 19013-4511 USA  
610-876-3400 | Fax 610-874-0190 | info@loudspeakers.net | www.loudspeakers.net