

Thank you for your purchase of the PI9 PhonePatch II. The PI9 takes a signal from a standard telephone jack and, via transformer isolation, connects to a pair of RCA jacks, or a stereo 1/8" (3.5mm) jack. The isolation keeps the output signal separate from the telephone line, and will not keep the line open unless the internal jumper is moved (see INTERNAL JUMPER section of this manual). Applications for the PI9 include broadcast, conference rooms, phone training, or wherever a phone conversation needs to be recorded or heard over a PA system.

WARRANTY

For complete information on the Rolls 1 Year Warranty, and to register your warranty on this product; visit our website; www.rolls.com

DESCRIPTION

INPUTS: 2 ea: Standard RJ11 phone jacks.

AUDIO LINE: 2 ea; RCA jacks, 1 ea; 1/8" (3.5mm) jack

ON/OFF switch: Connects or disconnects the Phone/Line jacks to the transformer and the Audio output.

CONNECTION: Refer to Figure 1.

Connect a standard telephone cable to an active telephone line, and to the PI9 Phone Input. To pass the signal on to another telephone, connect another standard telephone cable from the PI9 Line jack to a telephone.

Connect either a stereo RCA cable, or stereo 1/8" (3.5mm) cable to an AUDIO LINE output jack.

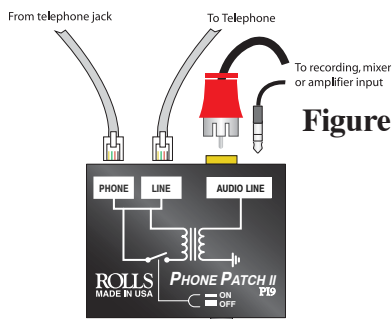


Figure 1.

INTERNAL JUMPER

An option available in the PI9 is the ability to select whether or not the unit will hold a line open or not. A line being "held open" acts like a telephone is off the hook.

The PI9 jumper, as set from the factory, will NOT hold the line open. In order for the unit to operate this way, the internal jumper must be moved to the position shown in Figure 2. You must first remove the two screws on either side of the unit, and carefully lift off the top. Using either a pair of needle-nose pliers, or tweezers, move the jumper to connect the two pins together as shown.

Carefully replace the cover of the unit, and secure the screws.

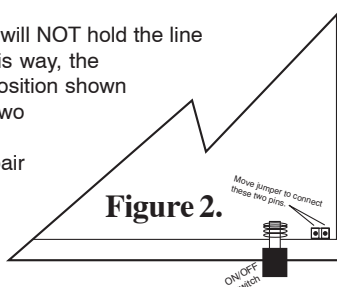
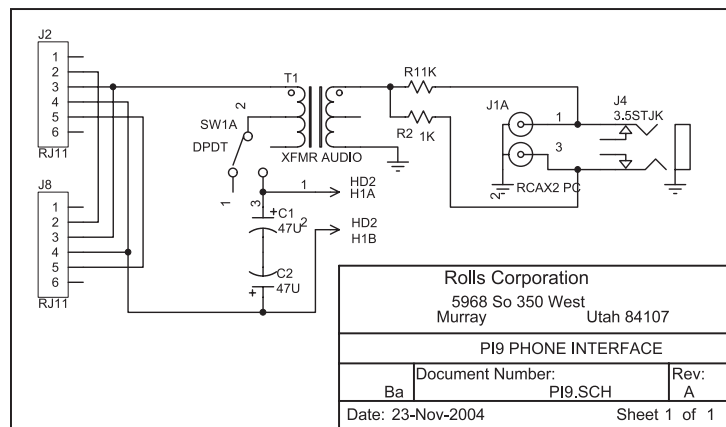


Figure 2.



Rolls Corporation
5968 So 350 West
Murray Utah 84107

PI9 PHONE INTERFACE

Document Number: PI9_SCH Rev: A

Date: 23-Nov-2004

Sheet 1 of 1

... anywhere you need to connect a telephone line to your audio system.

ROLLS

- Broadcast
- Install
- Studio

PI9 PhonePatch II

PI9 PhonePatch II
ROLLS

PI9 PhonePatch II

The PI9 takes a signal from a standard telephone jack and, via transformer isolation, connects to a pair of RCA jacks, or a stereo 1/8" (3.5mm) jack. The isolation keeps the output signal separate from the telephone line, and will not keep the line open unless the internal jumper is moved. Applications for the PI9 include broadcast, conference rooms, phone training, or wherever a phone conversation needs to be recorded or heard over a PA system.

SPECIFICATIONS

Input Impedance: 600 Ohms
Output Impedance: 10 K Ohms
Ringer Equivalence: 0.0 A, 0.0 B

Connections: 2; RJ11 phone jack,
2; RCA jacks
1: Tip-Ring-Sleeve 3.5mm jack

Size: 2.7" W x 1.45" H x 2.32" D
Weight: 1 lb.



ROLLS

Rolls Corporation
Salt Lake City, UT
11/04

PI9 PhonePatch II



6 75889 00009 2