



Quam

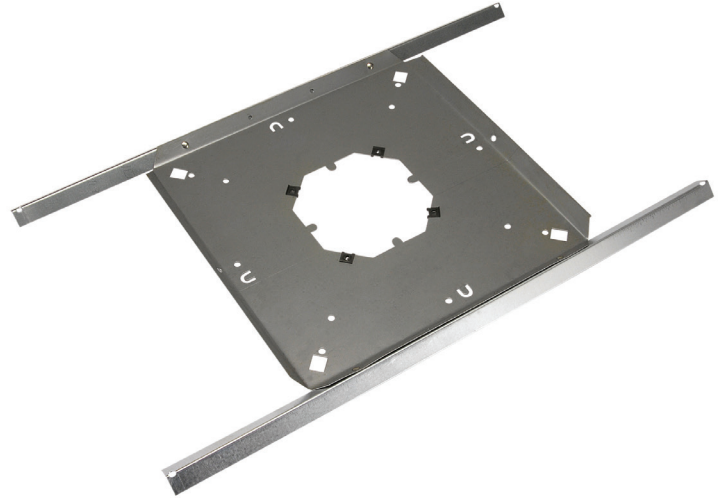
SSB-4

SPEAKER SUPPORT BRIDGE

For 4" O.D. Loudspeaker Assemblies

GENERAL DESCRIPTION

The **SSB-4** is a rust resistant steel, load bearing support for 4" O.D. loudspeaker assemblies in a drop-tile ceiling grid. Easy "mark & cut" "square" hole design for fast and efficient installation. Multiple seismic tie-off points are provided. Tinnerman clips provide easy screw threading, quick mount tabs hold the back box in place without screws, and locating tabs provide secure mounting positions in ceiling tiles.

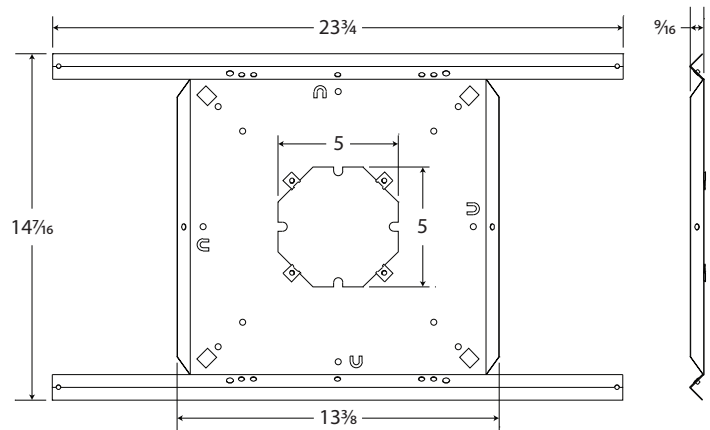


INTENDED USE - Indoor or Protected Outdoor Environment

Installation | Parallel to floor plane in a suspended ceiling structure; maximum span of 24" in one dimension.

RECOMMENDED QUAM COMPONENTS

Baffles	BR4WS
Back Boxes	ERD-8 or ER8DU



Recommended construction sequences, installation instructions, and A&E Specifications are available in various formats in the Specs and Diagrams section at: www.QuamSpeakers.com



QUAM-NICHOLS COMPANY, INC.
 234 East Marquette Road, Chicago, IL. 60637
 t: 1-800-NEED-NOW (800-633-3669)
 f: 1-888-NEED-NOW (888-633-3669)
 e: NeedNow@QNC.com
www.QuamSpeakers.com

©2017 Quam-Nichols Company reserves the right to make changes and/or improvements to its products at any time and without notice.