

LT-HD

User Manual

Please Note: The LT-HD requires your Aurora converter to have Firmware Version 14 or later. Any Aurora shipped from Lynx Studio Technology prior to August 22, 2006 will have previous firmware installed in it.

For information about updating the Aurora's firmware to a compatible revision, see section 3.3: Operation Requirements.

Lynx Studio Technology, Inc.

www.lynxstudio.com

support@lynxstudio.com

LT-HD

User Manual Table of Contents

1	Introduction.....	1
2	Features	1
3	Before You Begin	2
3.1	Contents	2
3.2	Optional Equipment	2
3.3	Operation Requirements	2
4	Nomenclature used in this manual.....	3
5	Warranty Registration	3
5.1	Locating the Serial Number of Your LT-HD	3
6	Installation Procedure	4
7	External Connections	7
8	Clock Settings	8
9	ProTools Setup.....	9
9.1	Hardware Setup Page.....	9
9.2	I/O Setup Page	15
10	Aurora Parameter Controls	16
10.1	Front Panel Controls	16
10.2	Aurora Remote Control Software	18
11	Updating the firmware on the LT-HD	20
12	Specifications	21
13	Support.....	22
13.1	Lynx Website Support Resources	22
13.2	Telephone Support	22
13.3	Registering your LT-HD.....	22
13.4	Return Policy	22
14	Warranty Information	23

Please note: This is a preliminary user manual. If you would like to receive the completed version of this manual when it is available, send an email request with your name, address and the serial number of your Aurora to: sales@lynxstudio.com.

1 Introduction

Thank you for purchasing the LT-HD™! We are proud to provide you with a reliable, professional-quality product for your digital audio requirements.

This manual provides basic information to help you get started. Additional information is available via our web site and email support. Please refer to the support section at the end of this manual for support contact information.

The LT-HD is a 32-channel LSlot interface that is designed to allow the Aurora professional audio AD/DA converters to be used with Digidesign® ProTools|HD® Recording Systems. The LT-HD allows direct connection with ProTools|HD Core, Accel and Process cards. An LT-HD equipped Aurora emulates a Digidesign 192 I/O™ interface, making integration simple and allowing for accurate delay compensation within ProTools® software. Multiple LT-HD equipped Auroras can be used to achieve the desired channel count within a ProTools|HD system.

2 Features

- One Primary and one Expansion DigiLink port.
- Up to 32 channels of AD/DA conversion per ProTools|HD Core or Accel/Process card possible with two Aurora 16's.
- Aurora 16 can operate in 16-channel mode or 32-channel mode. In 16-channel mode up to 16 channels of analog and digital I/O can be used at one time. In 32-channel mode all 16 channels of analog I/O and all 16 channels of digital I/O can be used simultaneously.
- Aurora 8 provides 8 channels of analog I/O and 8 channels of digital I/O simultaneously.
- Supports full channel count at sample rates up to 192 kHz.
- Offers audio signal latency identical to that of the Digidesign 192 I/O for accurate delay compensation within ProTools - no manual delay adjustments required.
- Allows I/O functions and Aurora parameters to be controlled and monitored within ProTools.
- Interfaces with HD system using standard DigiLink cables.
- Allows daisy-chaining of multiple Aurora converters and other DigiLink devices via Expansion port.
- Lynx proprietary SynchroLock™ technology can be used to reduce jitter when Aurora is a clock slave or to provide stable, low jitter clock to downstream devices.
- Easily installed into Aurora.

3 Before You Begin

We recommend that you read through the manual to acquire an overview of the installation procedure and use of the LT-HD. This manual will presume a working knowledge of the Aurora converter. For additional information, please refer to the Aurora owner's manual.

3.1 Contents

Verify that you received the following in the LT-HD shipping carton:

- LT-HD card in cushioned antistatic bag
- Warranty Registration Card
- User Manual
- 1/2" Standoff Post

3.2 Optional Equipment

DigiLink cables (available from Digidesign) are required for connection to ProTools HD cards.

3.3 Operation Requirements

The LT-HD requires your Aurora converter to have Firmware Version 14 or later. This should be verified prior to installing and configuring the LT-HD card. To determine what firmware revision your Aurora has, press the TRIM and POWER buttons at the same time with the power to the Aurora off. If the LED flashes over number 14 or above with an Aurora 16, or number 8 for an Aurora 8, then your unit is compatible with the LT-HD. If pressing Power and Trim does not cause any LEDs to flash, or causes a number below 14 for an Aurora 16, or below 8 for an Aurora 8, then your unit needs to be updated.

Updating the Aurora firmware to version 14 requires a Lynx AES16 PCI audio interface. If your Aurora has firmware version 13 it can also be updated by a Windows PC or OSX Macintosh via MIDI, or by a Windows PC via Infrared. The Aurora firmware updater program is available for download from the Lynx website at Support > Latest Driver Download. If your unit requires an AES16 to update because it has rev 12 or earlier, and you do not have access to one, there are two options for customers within the USA and Canada:

- Option 1: Send the Aurora and LT-HD to Lynx Studio Technology in California. We will update the Aurora, install the LT-HD and do a full diagnostic test within one day of receipt. It will be return shipped via 2-Day Air.
- Option 2: Lynx Studio Technology will loan you an AES16 for updating the firmware in your Aurora. For more information on the procedure and any questions, contact support@lynxstudio.com or call 949-515-8265 ext 206.
If you are outside of the USA or Canada, please contact your local distributor for additional firmware update options.

The Aurora/ LT-HD (an LT-HD equipped Aurora) also requires a correctly installed and configured ProTools|HD system with Digidesign Core, Accel or Process card(s).

4 Nomenclature used in this manual

The following typographic conventions are used in this manual:

- ALL UPPER CASE TEXT refers to a specific parameter selection control (i.e. SYNC SOURCE) or a cable connection.
- Text in quotation marks indicates a parameter selection value or menu option (i.e. “EXT”).
- Phrases, such as: Click Setups Menu > Hardware Setup, use the greater than symbol (“>”) to indicate multiple menu options or mouse selections within a software control context.

5 Warranty Registration

We are committed to providing you with the best service possible. To help us serve you better, please be sure to register your LT-HD using one of the following methods:

- Fill out and mail the Warranty Registration Card included with your LT-HD.
- Register on the web at:
<http://www.lynxstudio.com/support.html>

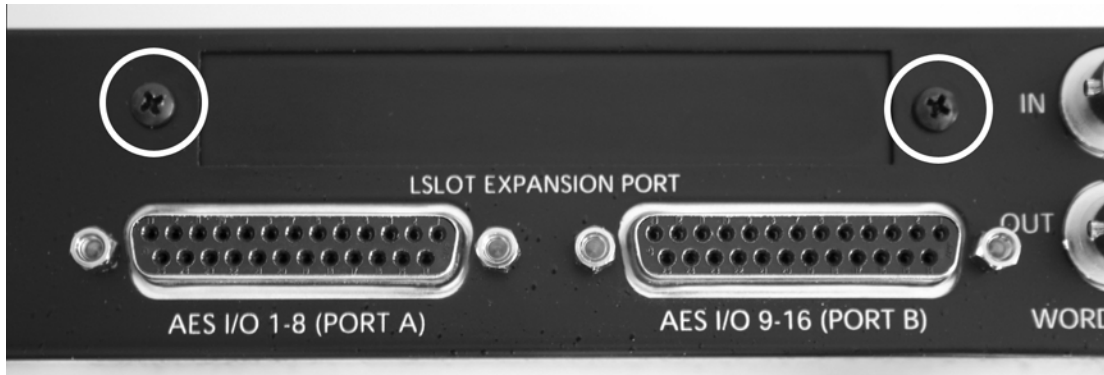
Once you are registered you will automatically receive notifications of new products and upgrades.

5.1 Locating the Serial Number of Your LT-HD

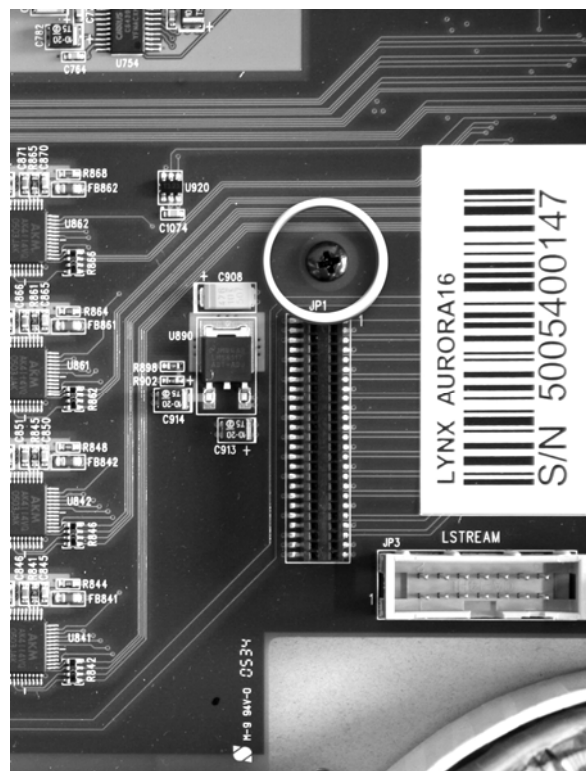
To register your LT-HD, you must supply its serial number. The serial number is located on a label attached to the back (solder-side) of the LT-HD board, and also on the shipping carton.

6 Installation Procedure

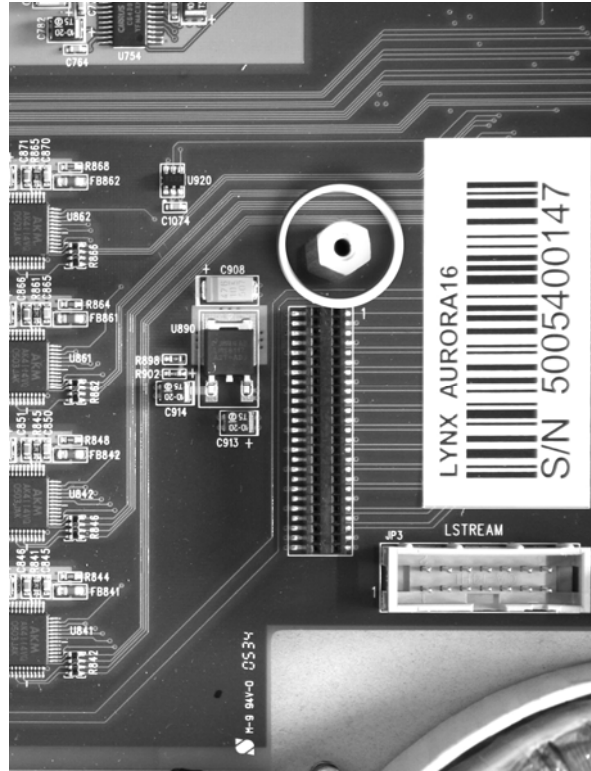
1. Remove the AC power cord and take the top off of the Aurora 16 or Aurora 8. There are seven large screws plus one small screw near the center of the front faceplate.
2. Remove the LSlot Expansion Port cover above the AES I/O Ports by removing the two mounting screws. Set these two screws aside, as they will be used to secure the LT-HD after installation.



3. Remove the screw from the Aurora circuit board that is adjacent to the JP1 connector and the white serial number/barcode label. Set the screw aside for reuse.



4. Install the standoff post (included with the LT-HD) in this same hole.



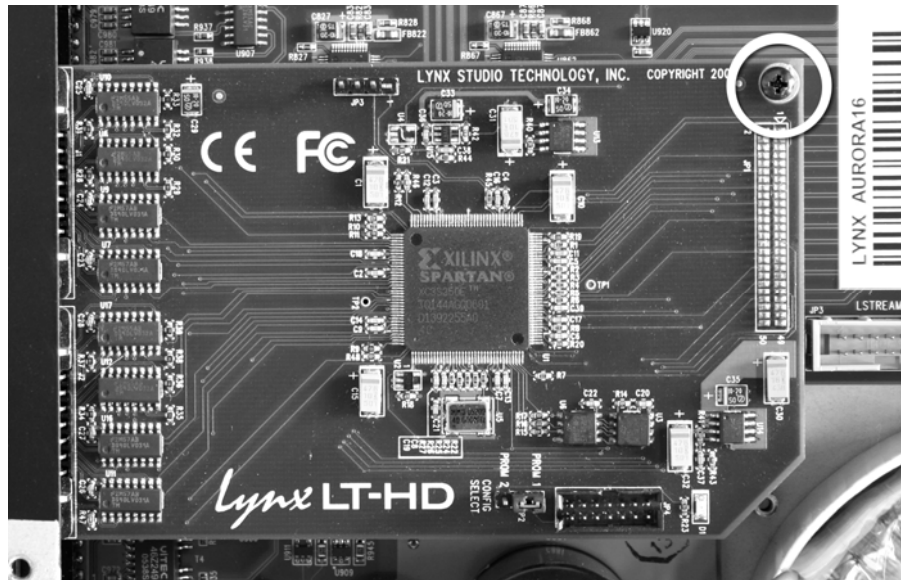
5. Grounding yourself to the earth ground, remove the LT-HD from its protective static bag.
6. Attach the multi-pin connector on the back edge of the LT-HD to the LSlot connector (JP1) on the Aurora mainboard. When the LT-HD connector pins appear to be lined up correctly with the Aurora LSlot connector press gently until the connector snaps into place. In some cases, the board may need to be gently flexed for the LSlot connector pins to line up correctly with JP1 on the Aurora mainboard.



Use caution to insure that the pins line up as shown. Incorrect installation could damage the unit.



7. Secure LT-HD with three screws; one on the standoff and two from the back panel of Aurora. Keep screws loose until LT-HD is properly aligned, then tighten snugly, but do not overtighten.



8. Plug in and power up the Aurora using the front panel standby switch. If the green LED on the LT-HD lights up, proceed to step 9. If the LED does not light, unplug the Aurora and re-mount the LT-HD, making sure that it is securely attached. Then plug in and power up again. If the green LED still does not light, contact Lynx Customer Support (949-515-8265 X206).
9. Remove the power cord from Aurora and reinstall the Aurora top panel using the eight screws. Do not over tighten the small screw near the center of the front faceplate as it is easily damaged.

7 External Connections



The physical connection between the Aurora/LT-HD and Digidesign Core, Process or Accel cards is very straightforward. Please note: we suggest only using DigiLink interconnect cables of 18" or shorter for optimal performance.

The LT-HD card has two connectors labeled as PRIMARY and EXPANSION, similar to the Digidesign HD Interfaces. The port that an interface is connected to will determine how it will be accessed within the ProTools environment. See Section 9 for information about software setup considerations.

Connecting a single LT-HD equipped Aurora to a single ProTools|HD Core Card is simply a matter of connecting a DigiLink cable from the LT-HD PRIMARY port to the ProTools Core Card DigiLink port. If two Auroras will be connected to the same Core or Accel/Process card, the first should be connected as described above, and an additional DigiLink cable should be used to connect from the EXPANSION port on the first interface to the PRIMARY port on the second. It is not possible to connect more than two Aurora 16s or two Aurora 8s to a single ProTools|HD Core or Accel/Process card, as there is a 32-channel limit to each card.

There are three possible states for integrating an Aurora into a ProTools|HD system:

- Aurora 16 in 32-channel mode
- Aurora 16 in 16-channel mode
- Aurora 8

In 32-channel mode, all analog and digital I/O channels of the Aurora 16 are available simultaneously. Since each DigiLink port is capable of 32-channels maximum, in 32-channel mode it would not be possible to connect a second interface to the LT-HD expansion port. The Channel Mode for the Aurora can be toggled from the front panel by pressing the TO ANALOG OUT button for ½ second. The correct mode should be set prior to launching the ProTools software. In 32-channel mode, the Aurora 16 will appear as two Digidesign 192 I/O interfaces. Each "instance" will present 8 channels of Analog I/O and 8 channels of Digital I/O - both of which can be used simultaneously. Combined, this allows 32-channels of input and output to be available (16 analog/ 16 digital).

In 16-channel mode, each Aurora 16 will appear as a single 192 I/O interface. In this mode, 16 channels of Analog I/O and 8 channels of Digital I/O will be presented to the ProTools software.

Of these 24 possible I/O channels, only 16 can be used at one time. One could use 8 channels of analog + 8 channels of digital, 14 channels of analog + 2 channels of digital, etc.

This is the default state for an Aurora 16. If two Aurora 16s will be connected to a single HD Core/Accel/Process card, both will need to be in 16-channel mode in order for the both units to be available to the ProTools software. This configuration is recommended for those who need more than 16-channels of AD/DA conversion. Please Note: Analog Output channels 9-16 are not available at sample rates above 48kHz in 16-channel mode. These outputs use the ADAT Out 1-8 devices in the ProTools Hardware Setup page, which are sample-rate limited by the software.

Aurora 8's will always operate in 16-channel mode, where 8 analog and 8 digital I/O channels are available simultaneously.

If more than 32-channels of I/O is required then additional Digidesign Accel or Process cards will be required.

Possible combinations that can be connected to a single DigiLink port are two Aurora 16s, one Aurora 16 and one Aurora 8, or two Aurora 8s. In multiple interface configurations use the Primary and Expansion ports to connect all the units in series. Keep in mind that each Aurora used in this fashion needs to be equipped with an LT-HD card.

It is also possible to connect LT-HD equipped Auroras in series with Digidesign or other third party HD-compatible interfaces. In this case, "daisy-chain" the interfaces in the same fashion as described for multiple Auroras, keeping in mind the 32-channel per HD card limitation. In this context, LT-HD/Auroras can be connected to the expansion port of the Digidesign/other interface, or the Digidesign/other interface can be connected to the LT-HD/Aurora's expansion port.

8 Clock Settings

In any audio system with more than one digital device, it is ideal for one master clock to provide synchronization to all connected devices. There are several options for configuring the Aurora to send or receive clock within a ProTools|HD environment.

ProTools|HD Interfaces and other digital devices can slave to the sample clock generated by the Aurora, or the Aurora can be configured to receive clock from another interface or digital device. It is also possible to have a dedicated clock source that provides clock to both the Aurora and every other digitally connected device. In fact, if more than two digital I/O devices will be integrated into your ProTools|HD system, we strongly recommend using some form of clock distribution to insure proper clock synchronization.

When used with ProTools|HD, there are some differences as to what clock choices are available for the Aurora, and how they are labeled. Section 9.1 describes which Aurora Sync Source settings are possible from within ProTools, and section 10 describes how clock source choices in ProTools are interpreted by the Aurora.

Please see section 2.4 of the Aurora manual for general information about available clock settings and clocking considerations with the Aurora.

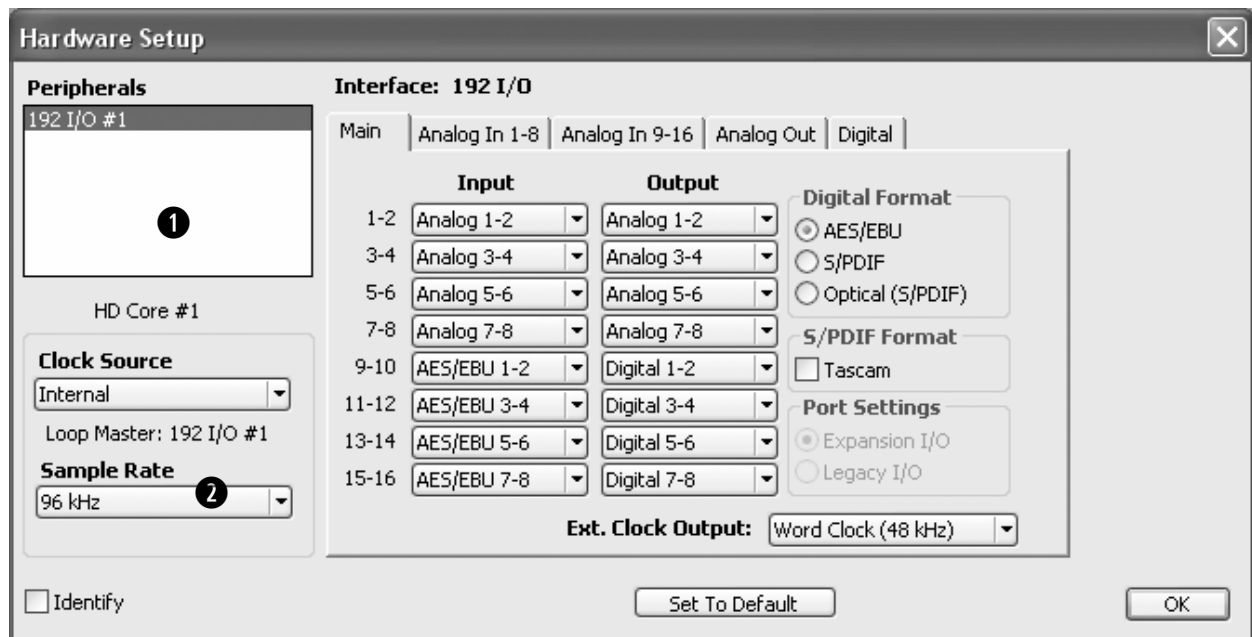
9 ProTools Setup

When an Aurora/LT-HD is connected to a Digidesign Core or Accel/Process card it will automatically be integrated as an I/O choice from within ProTools. Settings for attached interfaces are managed from the Hardware and I/O Setup pages within the ProTools Setup Menu.

9.1 Hardware Setup Page

The Hardware setup page within the ProTools software is where settings for connected interfaces are defined and displayed. This page reveals what I/O choices are available, allows parameters such as sync source to be set, and allows the user to establish which analog or digital I/O ports on connected interfaces will be available for ProTools record and play channels.

The Aurora will appear here as a single Digidesign 192 I/O interface when the Aurora is in 16-channel mode, or as 2 192 I/Os when in 32-channel mode. An Aurora 8 will always appear as a single 16-channel device. There are important ramifications to this orientation, since the Aurora offers I/O choices that are not possible with a 192 I/O. The following chart will be a critical tool to determine how to access the analog and digital I/O ports from within ProTools, since the I/O types available on the Aurora will not always intuitively match the defined I/O ports in ProTools. Please note that parameter switches can have different results depending on whether you are using an Aurora 16 in 16-channel mode, an Aurora 16 in 32-channel mode or an Aurora 8.



		Aurora 8	Aurora 16: 16-channel mode	Aurora 16: 32-channel mode	
Notes:		<i>16 active channels at a time: 8 analog inputs, 8 analog outputs, 8 digital inputs/outputs</i>	<i>16 active channels at a time: 16 analog inputs, 16 analog outputs, 8 digital inputs/outputs</i>	<i>32 active channels at a time: 16 analog inputs, 16 analog outputs, 16 digital inputs/outputs</i>	
Peripherals	❶	192 I/O #1	192 I/O #1	192 I/O #1 (channels 1-8)	192 I/O #2 (channels 9-16)
Clock Source: Internal	❷	INT	INT	INT	N/A
Clock Source: AES/EBU (INT)		N/A	N/A	N/A	N/A
Clock Source: AES/EBU 1-2		AES A (channels 1-4)	AES A (channels 1-8)	AES A (channels 1-8)	N/A
Clock Source: AES/EBU 3-4		AES A (channels 1-4)	AES A (channels 1-8)	AES A (channels 1-8)	N/A
Clock Source: AES/EBU 5-6		AES B (channels 5-8)	AES A (channels 1-8)	AES A (channels 1-8)	N/A
Clock Source: AES/EBU 7-8		AES B (channels 5-8)	AES A (channels 1-8)	AES A (channels 1-8)	N/A
Clock Source: ADAT 1-8		N/A	N/A	N/A	N/A
TDIF 1-8		N/A	N/A	N/A	N/A
Optical (ADAT)		N/A	N/A	N/A	N/A
Wordclock (44.1k/48k)		EXT	EXT	EXT	N/A
Wordclock (88.2k/96k)		EXT (88.2/96) or EXT/2* (44.1/48)	EXT (88.2/96) or EXT/2* (44.1/48)	EXT (88.2/96) or EXT/2* (44.1/48)	N/A
Wordclock (176.4k/192k)		EXT (176.4/192) or EXT + EXT/2* (44.1/48)	EXT (176.4/192) or EXT + EXT/2* (44.1/48)	EXT (176.4/192) or EXT + EXT/2* (44.1/48))	N/A
* EXT/2 and EXT/4 clock rates are not supported in Revision 01 of the LT-HD firmware.					

Hardware Setup

Peripherals

192 I/O #1

HD Core #1

Clock Source

Internal

Loop Master: 192 I/O #1

Sample Rate ③

96 kHz

☐ Identify ④

Interface: 192 I/O

Main | Analog In 1-8 | Analog In 9-16 | Analog Out | Digital

Input ⑤

1-2 Analog 1-2

3-4 Analog 3-4

5-6 Analog 5-6

7-8 Analog 7-8

9-10 AES/EBU 1-2

11-12 AES/EBU 3-4

13-14 AES/EBU 5-6

15-16 AES/EBU 7-8

Output ⑥

1-2 Analog 1-2

3-4 Analog 3-4

5-6 Analog 5-6

7-8 Analog 7-8

1-2 Digital 1-2

3-4 Digital 3-4

5-6 Digital 5-6

7-8 Digital 7-8

Digital Format ⑦

☒ AES/EBU

☐ S/PDIF

☐ Optical (S/PDIF)

S/PDIF Format

☐ Tascam

Port Settings

☒ Expansion I/O

☐ Legacy I/O

Ext. Clock Output: Word Clock (48 kHz)

Set To Default

OK

		Aurora 8	Aurora 16: 16-channel mode	Aurora 16: 32-channel mode	
				192 I/O #1 (channels 1-8)	192 I/O #2 (channels 9-16)
Sample Rates	③	All Supported	All Supported	All Supported	N/A
Identify	④	Causes LEDS on Aurora Front panel to illuminate	Causes LEDS on Aurora Front panel to illuminate	Causes LEDS on Aurora Front panel to illuminate	N/A
Analog In 1-8	⑤	Analog In 1-8	Analog In 1-8	Analog In 1-8	Analog In 9-16
Analog In 9-16		N/A	Analog In 9-16	N/A	N/A
AES/EBU In 1-8		Digital In (1-8)	Port A Digital In (1-8)	Port A Digital In (1-8)	Port B Digital In (9-16)
ADAT In 1-8		N/A	N/A	N/A	N/A
Analog Out 1-8	⑥	Analog Out 1-8	Analog Out 1-8	Analog Out 1-8	Analog Out 9-16
AES/EBU Out 1-8		Digital Out (1-8)	Port A Digital Out (1-8)	Port A Digital Out (1-8)	Port B Digital Out (9-16)
ADAT Out 1-8		N/A	Analog Out 9-16*	N/A	N/A
Digital Format	⑦	N/A	N/A	N/A	N/A

* Analog Out 9-16 will only operate at sample rates up to 48kHz. In ProTools, the ADAT Out port is disabled at 2X or 4X sample rates.

Hardware Setup

✕

Peripherals

192 I/O #1

HD Core #1

Clock Source

Internal

Loop Master: 192 I/O #1

Sample Rate

96 kHz

Interface: 192 I/O

Main

Analog In 1-8

Analog In 9-16

Analog Out

Digital

Input

Output

1-2

Analog 1-2

Analog 1-2

3-4

Analog 3-4

Analog 3-4

5-6

Analog 5-6

Analog 5-6

7-8

Analog 7-8

Analog 7-8

9-10

AES/EBU 1-2

Digital 1-2

11-12

AES/EBU 3-4

Digital 3-4

13-14

AES/EBU 5-6

Digital 5-6

15-16

AES/EBU 7-8

Digital 7-8

Digital Format

☒ AES/EBU

☐ S/PDIF

☐ Optical (S/PDIF)

S/PDIF Format

☐ Tascam

Port Settings

☒ Expansion I/O

☐ Legacy I/O

Ext. Clock Output:

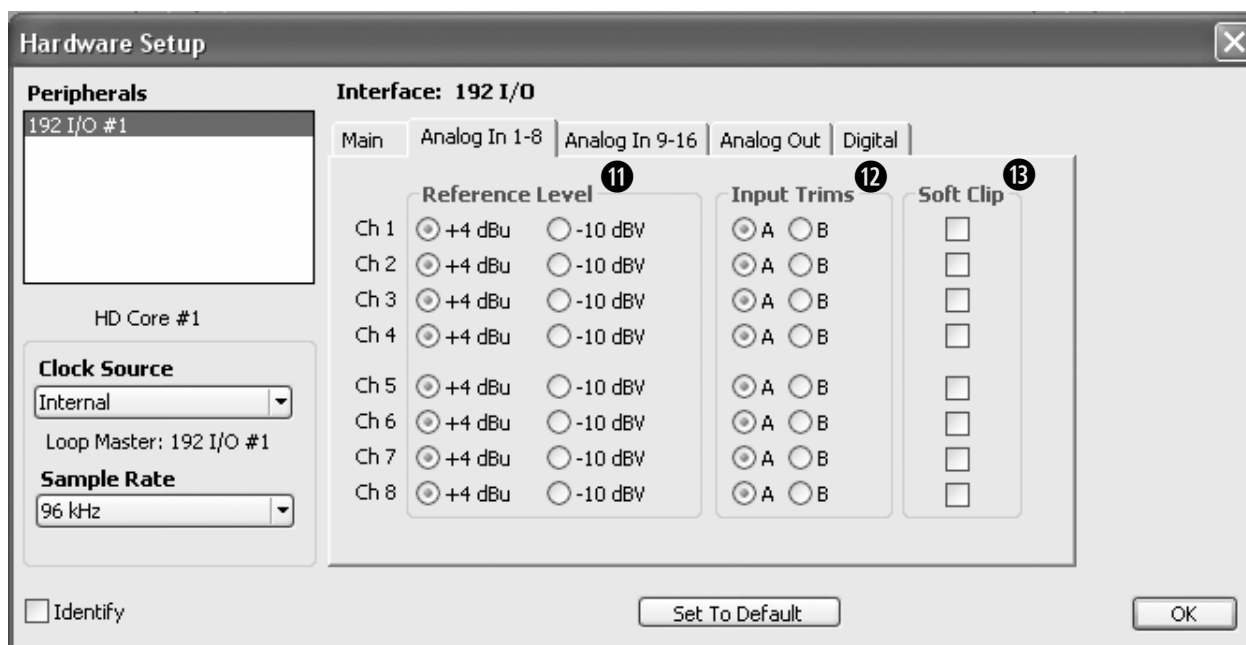
Word Clock (48 kHz)

Identify

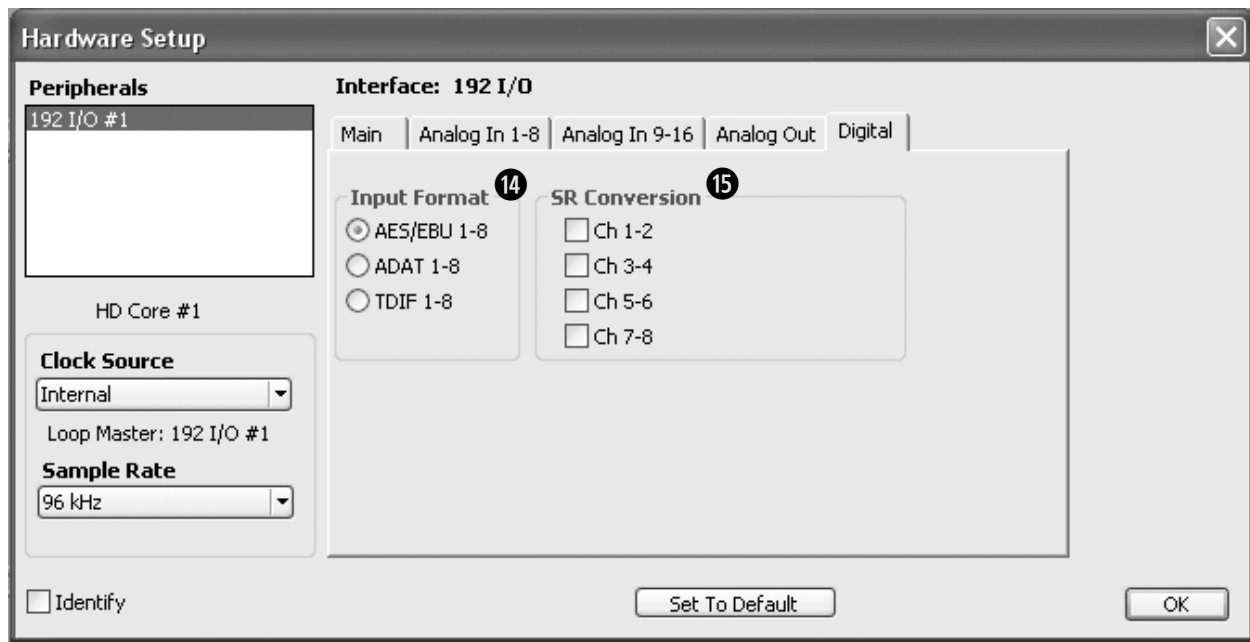
Set To Default

OK

		Aurora 8	Aurora 16: 16-channel mode	Aurora 16: 32-channel mode	
				192 I/O #1 (channels 1-8)	192 I/O #2 (channels 9-16)
S/PDIF Format	8	N/A	N/A	N/A	N/A
Port Settings	9	N/A	N/A	N/A	N/A
Ext. Clock Output	10	When set to project rate = EXT When set to 1/2 of project rate = EXT/2* When set to 1/4 of project rate = EXT/2 + EXT*	When set to project rate = EXT When set to 1/2 of project rate = EXT/2* When set to 1/4 of project rate = EXT/2 + EXT*	When set to project rate = EXT When set to 1/2 of project rate = EXT/2* When set to 1/4 of project rate = EXT/2 + EXT*	N/A
* EXT/2 and EXT/4 clock rates are not supported in Revision 01 of the LT-HD firmware.					



		Aurora 8	Aurora 16: 16-channel mode	Aurora 16: 32-channel mode	
				192 I/O #1 (channels 1-8)	192 I/O #2 (channels 9-16)
Analog In: Ref. Level	11	N/A	N/A	N/A	N/A
Analog In: Input Trims	12	A = +4 dBu (default) B = -10 dBV. Ch 1 will alter the trims for Aurora channels 1-4. Ch. 5 will alter the trims for Aurora channels 5-8. Ch. 2-4 and Ch. 6-8 are non-functional*.	A = +4 dBu (default) B = -10 dBV. Ch 1 will alter the trims for Aurora channels 1-4. Ch. 5 will alter the trims for Aurora channels 5-8. Ch. 2-4 and Ch. 6-8 are non-functional*. Similarly, for channels 9-16, Ch. 9 and Ch. 13 are the active controls.	A = +4 dBu (default) B = -10 dBV. Ch 1 will alter the trims for Aurora channels 1-4. Ch. 5 will alter the trims for Aurora channels 5-8. Ch. 2-4 and Ch. 6-8 are non-functional*.	A = +4 dBu (default) B = -10 dBV. Ch 1 will alter the trims for Aurora channels 9-12. Ch. 5 will alter the trims for Aurora channels 13-16. Ch. 2-4 and Ch. 6-8 are non-functional*.
Soft Clip	13	N/A	N/A	N/A	N/A
Analog Out: Output Trims		A = +4 dBu (default) B = -10 dBV. Same functionality as the Analog In Trims – active channels are 1 and 5*.	A = +4 dBu (default) B = -10 dBV Same functionality as the Analog In Trims – active channels are 1, 5, 9 and 13*. Note: in this mode trims can not be set for Analog outputs 9-16.	A = +4 dBu (default) B = -10 dBV. Same functionality as the Analog In Trims – active channels are 1 and 5*.	A = +4 dBu (default) B = -10 dBV Same functionality as the Analog In Trims – active channels are 1 and 5*.
*Aurora trims are activated in banks of 4-channels. Therefore, only channels 1, 5, 9 and 13 in the ProTools software will be responded to by the Aurora.					



		Aurora 8	Aurora 16 : 16-channel mode	Aurora 16: 32-channel mode	
				192 I/O #1 (channels 1-8)	192 I/O #2 (channels 9-16)
Input Format	14	N/A	N/A	N/A	N/A
SR Conversion	15	44.1 kHz- 96 kHz = N/A 176.4 kHz – 192 kHz = toggles dual-wire On/Off. When On, all AES inputs and outputs will be in dual-wire mode – channel count is reduced by ½.	44.1 kHz- 96kHz = N/A 176.4kHz – 192kHz = toggles dual-wire On/Off. When On, all AES inputs and outputs will be in dual-wire mode – channel count is reduced by ½.	44.1 kHz- 96kHz = N/A 176.4kHz – 192kHz = toggles dual-wire On/Off. When On, all AES inputs and outputs will be in dual-wire mode – channel count is reduced by ½.	N/A

After selecting which I/O devices will occupy each of the 16 input and output channels available on the hardware setup page, these devices can then be assigned to ProTools record and play channels and labeled from the I/O Setup page

9.2 I/O Setup Page

This page within the ProTools software is where active input and output devices that are defined in the hardware setup page are assigned to record and play channels for use by tracks and busses within ProTools.

Click on the INPUT, OUTPUT, and INSERT Tabs and click “default” to create signal paths based on the I/O defined in the Hardware Setup page. Afterwards, it is generally helpful to re-label these paths to correspond to Aurora channels (i.e. Aurora Analog In 2, Aurora Digital Out 3, etc.) or to the name of front-end devices which are plugged into the Aurora (i.e. Mic Preamps, Mixer outputs, etc.).

In cases where the ProTools labels do not define the Aurora I/O type used (i.e. ADAT Out 1-8 = Aurora Analog Out 9-16), labels can be created here for clarification.

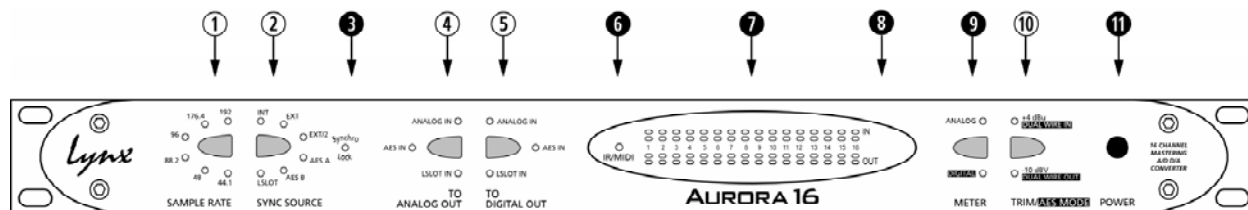
10 Aurora Parameter Controls

Since the Aurora with an LT-HD installed is intended to be accessed and identified as a Digidesign 192 I/O, all routing and system settings that are applicable for ProTools sessions should be initiated from within ProTools. There is no mechanism for parameter changes initiated from the interface device to be communicated and correctly displayed within the ProTools software.

When the ProTools software is launched and correctly identifies the Aurora as a 192 I/O, the Aurora will enter a “ProTools LockOut” state, where some controls can only be initiated from within the ProTools software. When the ProTools software is closed, the Aurora will return to its former state, and allow manipulation from the front panel or from the Aurora Remote Control software.

10.1 Front Panel Controls

When in the “ProTools LockOut” state, the Aurora front panel will reflect the following:



① SAMPLE RATE

This button will not be active. The current, operating sample rate will be indicated by the corresponding LED. When the sample rate is changed from within ProTools, the display will update to show the current rate.

② SYNC SOURCE

This button will not be active. The LED for the sync source which has been selected from within ProTools will illuminate. When the ProTools software is first launched, the Aurora will be set to Internal automatically. From that point forward, whatever sync source is selected from the Hardware Setup within ProTools will become active whenever the software is launched. In this context, the applicable choices are:

- INT Clock derived from the on-board crystal oscillator.
- EXT Clock signal from WORD CLOCK input.
- EXT/2 Clock signal from WORD CLOCK input running at half the desired sample rate. When ProTools is set for the clock to operate at 1/4 of the target sample rate, both the EXT and EXT/2 LEDs will illuminate, indicating EXT/4 operation. (please note: EXT/2 and EXT/4 operation are not support with LT-HD firmware revision 01).
- AES A Clock signal from the AES I/O Port A Digital Input. Clock is derived from the first valid AES/EBU channel.

AURORA B Clock signal from the AES inputs 1-4.

AES B This is not a possible setting when using an Aurora 16 with ProTools. If the Aurora is to slave to an AES signal, the clock source should be connected to AES I/O 1-8 (Port A).

AURORA 8 *Clock signal from the AES inputs 5-8.*

LSLOT Not applicable when used with the LT-HD.

If no clock signal is available for the SYNC SOURCE selected, the LED for the selected source will flash, and the Aurora will operate from its internal clock.

To disable SynchroLock, hold down the Sync Source button for ½ of a second. This must be done prior to launching ProTools.

③ SynchroLock

This LED will function normally. See the Aurora manual for information. To disable SynchroLock, hold down the Sync Source button for ½ of a second prior to launching ProTools.

④ TO ANALOG OUT

This button will not be active. LSLT IN will be illuminated when in “ProTools LockOut” mode. In an Aurora16, hold this button down for ½ second in order to toggle between 16-channel and 32-channel mode before launching ProTools.

⑤ TO DIGITAL OUT

This button will not be active. LSLT IN will be illuminated when in “ProTools LockOut” mode.

⑥ IR/MIDI

This LED will function normally. See the Aurora manual for information.

⑦ PEAK METERS

These LEDs will function normally. See the Aurora manual for information.

⑧ IR Transceiver

This will function normally. See the Aurora manual for information.

⑨ METER

This button will function normally. See the Aurora manual for information.

⑩ TRIM/AES MODE

When the meter select switch is set to analog, this button normally allows the nominal trim level to be set for the analog inputs and outputs. In “ProTools LockOut” mode, this button will not be active, but the Aurora will remain in whatever trim state it was in when ProTools was launched. If the trim value for any analog I/O is altered from within ProTools, both the +4 dBu and –10 dBV LEDs will be illuminated, indicating that this parameter is being controlled remotely.

When the METER select is set to “Digital”, this control allows configuration of the AES/EBU digital I/O. In “ProTools LockOut” mode, the button will not be active, but the LEDs will reflect the dual-wire state for the digital inputs and outputs.

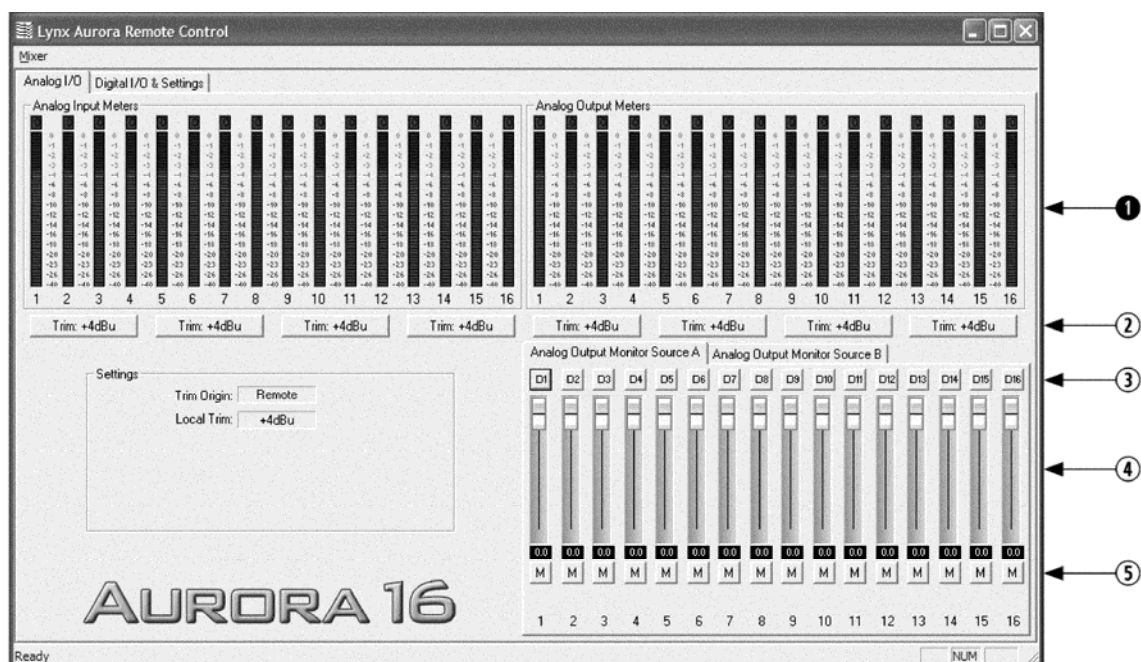
⑪ POWER

This button will function normally. See the Aurora manual for information.

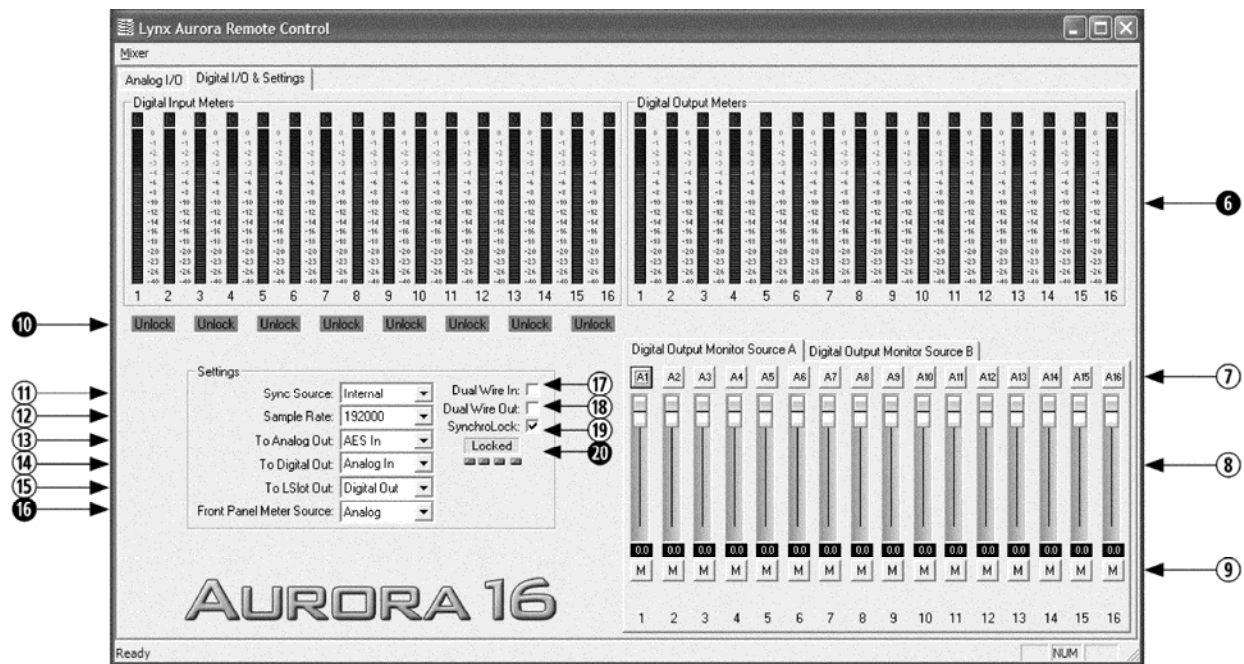
10.2 Aurora Remote Control Software

The Aurora Remote Control software can operate on an OSX or Windows PC computer via a Lynx AES16 audio interface or MIDI. It can also operate on a Windows PC computer via IR. As is the case with the front panel controls, parameter selection is limited when the Aurora is operating in “ProTools LockOut” mode.

In this mode some parameters will be “locked out” and not alterable, and others will function normally. This holds true for all of the controls detailed in Section 10.1, as well as for functions that are only accessible from the Aurora Remote Control software. This chart documents the behavior of the Remote Control software features while in “ProTools LockOut” mode:



Item	Description	Status
①	Analog Input and Output Meters	Functional
②	Analog Input and Output Trim Settings	Locked Out
③	Analog Output Monitor Source A and B monitor source selection	Locked Out
④	Analog Output Monitor Source A and B volume faders	Locked Out
⑤	Analog Output Monitor Source A and B mute controls	Locked Out



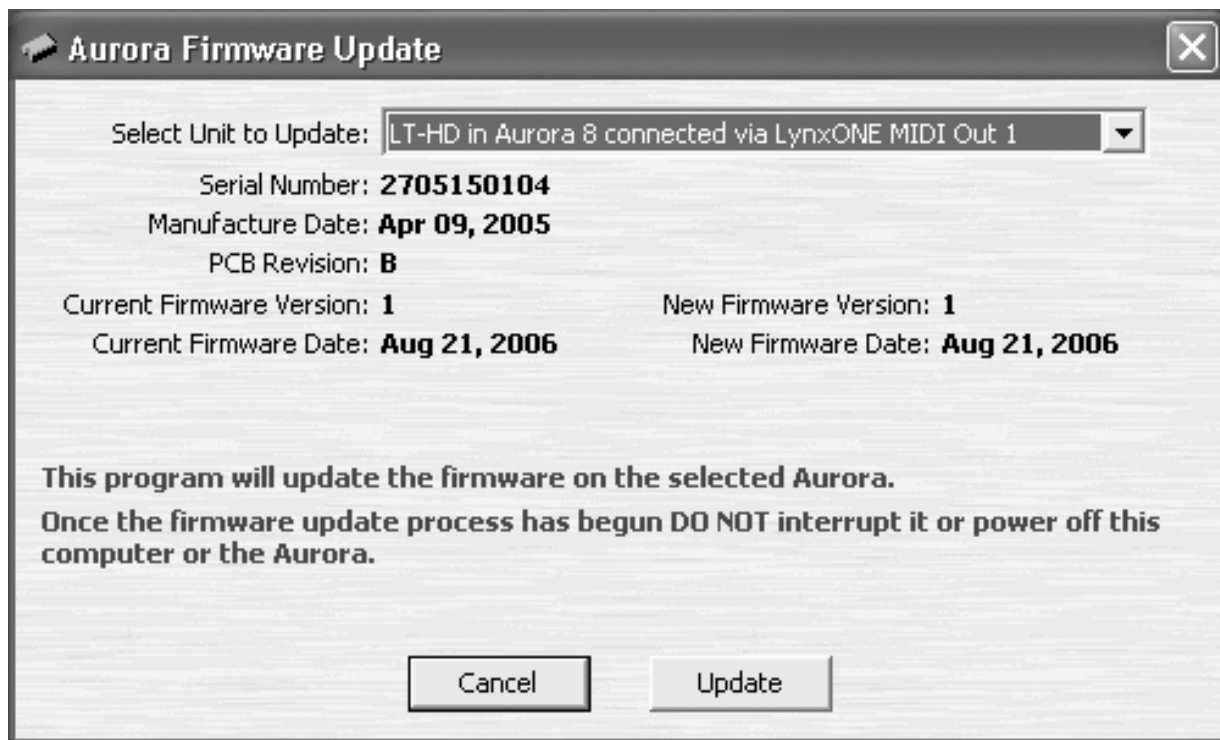
Item	Description	Status
6	Digital Input and Output Meters	Functional
7	Digital Output Monitor Source A and B monitor source selection	Locked Out
8	Digital Output Monitor Source A and B volume faders	Locked Out
9	Digital Output Monitor Source A and B mute controls	Locked Out
10	Digital Input Signal Status	Functional
11	Sync Source	Locked Out
12	Sample Rate	Locked Out
13	To Analog Out	Locked Out
14	To Digital Out	Locked Out
15	To LSlot Out	Locked Out
16	Front Panel Meter Source	Functional
17	Dual Wire In	Locked Out
18	Dual Wire Out	Locked Out
19	SynchroLock	Locked Out
20	SynchroLock Status	Functional

11 Updating the firmware on the LT-HD

Updating the firmware on the LT-HD uses the same process as updating the firmware on the Aurora. With Aurora Firmware updater revision 14 or above, a properly installed LT-HD can be selected as the device to program.

Instructions for downloading and running the Aurora Update program for Windows or OSX are available at: <http://www.lynxstudio.com/download.html>.

At the Aurora Firmware Update screen, simply select the LT-HD from the “Select Unit to Update” pulldown menu, and click “Update” to run. If the LT-HD does not appear as an option here, verify that the LT-HD is properly installed and the Current Aurora firmware revision is 14 or higher.



When the update process is complete, it is important to press the Power button to shut down the Aurora AND then **disconnect the Aurora from its power source**.

12 Specifications

DIGILINK PORTS	
Number / Type	One Primary, One Expansion
Channels	Aurora 8: 16 channels at all supported sample rates Aurora 16 - 16-channel mode: 16 channels at all supported sample rates Aurora 16 - 32-channel mode: 32 channels at all supported sample rates
CLOCK SYNCHRONIZATION	
Clock Sources	On Aurora: Compatible with DigiLink sources: Internal, Wordclock, Wordclock X2, Wordclock X4, AES
ARCHITECTURE	
Core	FPGA-based core. Support for field upgrades of firmware.
Pro Tools Controls	Responds to the following parameters manipulated from within the ProTools software: Clock Source, Analog and Digital I/O routing, Wordclock X2 and Wordclock X4, Sample Rates, Identify, Trim Levels, Dual-Wire/Single-Wire AES.
Delay Compensation	Emulates 192 I/O latency performance, no manual delay settings required.
CONNECTIONS	
I/O Ports	(2) Bracket-mounted DigiLink connectors.
Other	LStream interface headers
GENERAL	
Host Interface	Lynx proprietary LSlot™ Interface: 400 Mbps bi-directional
Requirements	Aurora 16/Aurora 8 with Firmware Revision 14 or higher and available LSlot expansion slot.
Size	3.0" H X 5.0" W X 0.75" D
EMI Certifications	FCC and CE
Shipping Weight	1 pound

13 Support

We are devoted to making your experience with the LT-HD trouble-free and productive. If the troubleshooting and operational sections of this manual did not help resolve your questions, several support options are available to you:

13.1 Lynx Website Support Resources

Logging on to <http://www.lynxstudio.com/support.html> will provide several options for resolving your support issues:

Support Ticket

For direct attention from the Lynx Technical Support Staff, registered users can submit a support ticket online that details their problem and steps they've taken to resolve it. Most Support Ticket submissions are responded to within 24 hours.

Frequently Asked Questions

An extensive catalog of FAQs derived directly from our most common tech support inquiries. Our FAQ section is updated regularly and designed to allow users to find the answers to their most common questions quickly.

Firmware and Driver Downloads

A library of current firmware and driver files are available for download and installation. Check back regularly to insure that your Aurora is up-to-date.

Lynx Support Forum

An online Lynx users support forum provides a venue for customers to post questions and issues and receive responses from other users as well as Lynx technical administrators. Searching previous posts is often an excellent way to uncover valuable information about Aurora operation and troubleshooting. See <http://www.lynxstudio.com/forum>.

13.2 Telephone Support

Telephone support is available by calling +1 (949) 515-8265 extension 206 from 9AM to 5PM Pacific Time, Monday through Friday, excluding United States Holidays.

13.3 Registering your LT-HD

Lynx is committed to providing you with the best service possible. To help us serve you better, please be sure to register your LT-HD using one of the following methods:

- Fill out and mail the Warranty Registration Card included with your LT-HD.
- Register on the web at: <http://www.lynxstudio.com/support.html>

Once you are registered you will automatically receive notifications of new products and upgrades.

13.4 Return Policy

If you have a unit that you suspect is defective or is malfunctioning contact Lynx technical support via one of the means described above for diagnosis. If the technician determines that the unit is faulty, they will issue an RMA number so you can send the unit in for repair. Units received without a valid RMA number will be refused. All RMA numbers are valid for 30 days from the date of issue.

14 Warranty Information

One year Free Labor / One year Parts Exchange
This product must be returned to the factory for repair.

Who Is Covered?

You must have proof of purchase to receive warranty service. A sales receipt or other document showing when and where you purchased the product is consider proof of purchase. This warranty is enforceable only by the original retail purchaser. To be protected by this warranty, the purchaser must complete and return the enclosed warranty card or register online within 14 days of purchase.

What Is Covered?

Warranty coverage beings the day you buy your product. *For one year thereafter*, Lynx shall, at its sole and absolute option, either repair or replace free of charge any product that proves to be defective on inspection by Lynx or its authorized service representative. In all cases disputes concerning this warranty shall be resolved as prescribed by law. All parts, including repaired and replaced parts, are covered only for the original warranty period. When the warranty on the product expires, the warranty on all replaced and repaired parts also expires.

What Is Excluded?

You warranty does not cover:

- Labor charges for installation or setup of the product.
- Product repair and/or part replacement because of misuse, accident, unauthorized repair or other cause not within the control of Lynx.
- A product that requires modification or adaptation to enable it to operate in any country other than the country for which it was designed, manufactured, approved and/or authorized, or repair of products damaged by these modifications.
- Incidental or consequential damages result from the product, damage to property, damage based on inconvenience or on loss of use of the product, and, to the extent permitted by law, damages for personal injury. Some states do not allow the exclusion or limitation of incidental or consequential damages, so the above limitation or exclusion may not apply to you.
- A product that is used for rental purposes.

To Get Warranty Service...

To obtain warranty service, the purchaser must first call or email Lynx at the email address or telephone number printed in Section 12 to obtain a Return Authorization Number and instructions concerning where to return the unit for service. All inquiries must be accompanied by a description of the problem. All authorized returns must be sent to Lynx or an authorized Lynx repair facility postage prepaid insured and properly packaged. Proof of purchase must be presented in the form of a bill of sale, canceled check or some other positive proof that the product is within the warranty period. Lynx reserves the right to update any unit returned for repair. Lynx reserves the right to change or improve design of the product at any time without prior notice.

Lynx Studio Technology, Aurora and the Aurora Logo are trademarks of Lynx Studio Technology, Inc. All other product or company names are the trademarks or registered trademarks of their respective owners. Digidesign, ProTools, ProTools|HD are trademarks of Digidesign, a division of Avid Technologies, Inc.

LT-HD™ User Manual, August 21, 2006.

Copyright © 1998-2006, Lynx Studio Technology, Inc. All rights reserved.