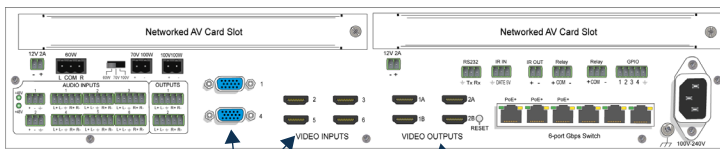
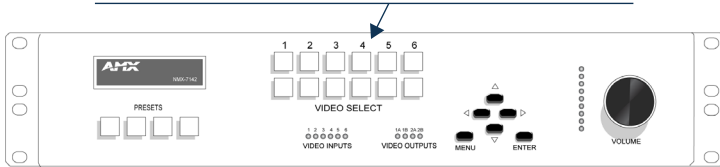


Overview

The NMX-PRS-N7142 Video Presentation Switcher incorporates low-latency networked AV video distribution. The unit has six local inputs and two independent outputs (both of the outputs are mirrored).

There are two models of the N7142. The NMX-PRS-N7142 is the base presentation switcher, with two available Networked AV slots that can be populated with Encoder and Decoder cards as required by the application. The NMX-PRS-N7142-23 is an identical presentation switcher, pre-populated with one N2312 Encoder card and one N2322 Decoder card.

Use the **VIDEO SELECT** buttons to choose which video input (1-6) is displayed. The top row of buttons sends the video to **VIDEO OUTPUT 1**. The bottom row sends the video to **VIDEO OUTPUT 2**.



Six video inputs: two VGA and four HDMI

Four video outputs: two HDMI mirrored pairs. Channels 1A and 1B are a mirrored pair. Channels 2A and 2B are a mirrored pair.

FIG. 1 N7142 VIDEO SWITCHER

Installing the N7142 Video Switcher

Follow the steps below for initial setup of the N7142.

1. Connect a monitor (that supports 1080p60) to one of the **VIDEO OUTPUT** connectors on the rear of the unit.
2. If networked AV cards are installed:
 - Connect the network cables from the cards to the built-in switch.
 - Connect the HDMI output on the installed Decoder to an N7142 HDMI input.
 - Connect the HDMI input on the installed Encoder to an N7142 HDMI output.

NOTE: If the AV card is connected to one of the three PoE+ ports, it will be powered automatically once the network connection is established. If not, then connect the two-pin phoenix adapter from the 12VDC output connector of the N7142 to the 12VDC input connector on the card.

CAUTION: Do not run wiring that is connected to a PoE PSE port outside of the building where the PSE resides. It is for intra-building use only.

3. Connect all other video sources, displays, etc. as necessary for your application.
4. Apply power to the N7142 unit using the power cable provided.
5. Once the unit completes the boot up process and the attached monitor displays the AMX logo, press the **MENU** button to access the On-Screen Display (OSD) setup menu. The **Quick Setup** page displays (see FIG. 2).
6. Use the corresponding arrow and **ENTER** keys (on the front panel) to assign the N7142 a **Name**.

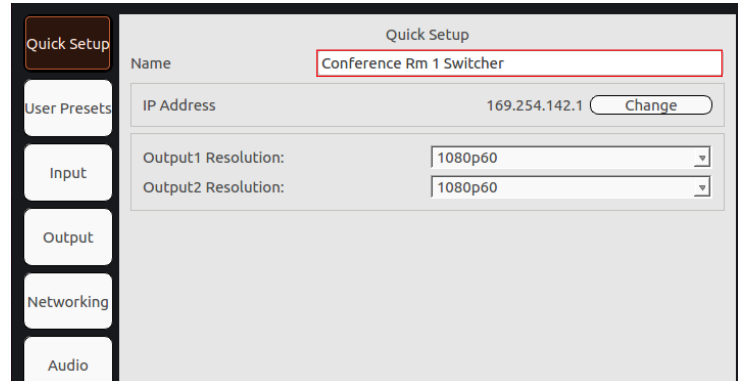


FIG. 2 SET A NAME FOR THE UNIT

7. Navigate to the **Networking** page (see FIG. 3). For both the **N7142** and the **Internal Switch**, select **AUTOIP** (N7142 only), **DHCP**, or **STATIC** from the **Network Mode** drop-down menu and then configure the other network settings as appropriate.

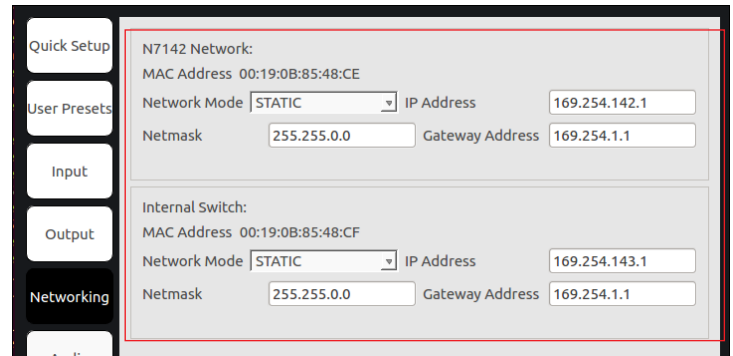


FIG. 3 CONFIGURE NETWORK SETTINGS

Internal Switch Configuration

Once the switch's IP address has been configured, you can access all switch settings via your web browser. Enter the switch's IP address into your browser window. When the login screen appears, enter **admin** as the username.

Note: No password is required initially, but you should create one immediately for security purposes.

Advanced Configuration

For more advanced configuration options, enter the unit's IP address into your web browser. When prompted, enter the default username and password (**admin** and **password**). The **Switcher Configuration** page displays (see FIG. 4). From here, you can view the status of N7142 **Inputs** and **Outputs** as well as make minor configuration adjustments. Click the **Settings** link at the top of this page to access more detailed configuration options (**Settings**, **Audio**, **IR**, etc.) and configure your unit.

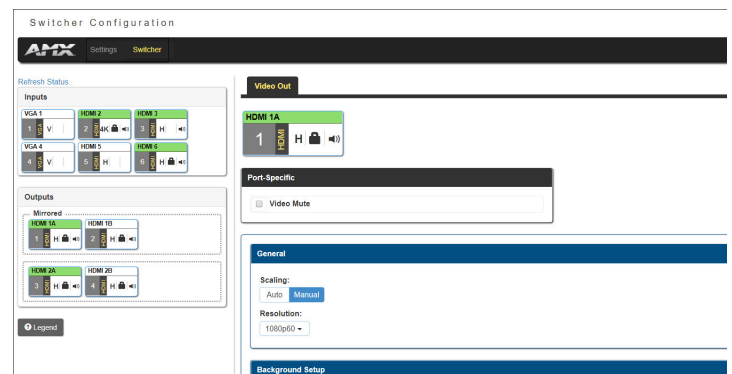


FIG. 4 SWITCHER CONFIGURATION SCREEN

Front and Rear Panel Highlights

Connector	Description
Front Panel	
PRESETS buttons	Press and hold (30 seconds) to save the current system configuration, including the resolutions of the output ports and the video selection. This button lights up (flashes) when save is successful. Press (no hold) to recall a saved configuration.
VIDEO SELECT buttons	Choose which video input (1-6) is displayed. The top row of buttons sends the video to VIDEO OUTPUT 1. The bottom row sends the video to VIDEO OUTPUT 2.
VIDEO INPUT/OUTPUT LEDs	On solid green when there is an active connection.
MENU buttons	Press MENU to access the quick setup menu options for basic configuration. The menu will display on the screen connected to a VIDEO OUTPUT. Use the corresponding arrow and ENTER buttons to navigate the quick setup menu and make selections.
VOLUME control	Controls the volume of the selected audio output sent through the amplifier.
Rear Panel	
Networked AV Card Slots	Dependent on model type. NMX-PRS-N7142: Slots can be populated with Encoder and Decoder cards as required by the application. NMX-PRS-N7142-23: Slots are pre-populated with one N2312 Encoder card and one N2322 Decoder card.
AUDIO INPUTS/OUTPUTS	Extensive audio selections are supported including a built-in DSP and 60W stereo amplifier capable of operating in 4Ω/8Ω, 70V, or 100V modes. In addition to audio from the HDMI inputs, the unit has six independent balanced stereo inputs and two independent microphone inputs with phantom power.
VIDEO INPUTS	Four 4K60 HDMI inputs and two VGA inputs. These can be independently switched between the two independently scaled HDMI outputs using the VIDEO SELECT buttons on the front panel.
VIDEO OUTPUTS	Two 4K60 HDMI outputs, each with its own mirrored HDMI port. This allows the output to be sent to an Encoder card, a second display, or other video distribution equipment.
6-port Gbps Switch ports	Six-port Gbps switch with PoE+ on three ports. Used for interconnection of AV cards and the main network.

Product Specifications	
Models Available:	NMX-PRS-N7142: Card slots are available for appropriate N-Series Encoder/Decoder cards to be installed (not included). NMX-PRS-N7142-23: Card slots are pre-populated with N2312 Encoder and N2322 Decoder cards.
Power Requirements:	Input: 2.4 Amp @ 120V AC Output: Supports up to three PoE+ network devices.
Dimensions (HWD):	3.5" x 17.5" x 13" (8.9 x 44.5 x 33 cm) With mounting wings, width is 19".
Weight:	19.5 lbs (8.85 kg)
Certifications:	FCC/CE/ICES-003/UL
Environmental:	Temperature: 32° to 104°F (0° to 40°C) Humidity: 10% to 90% RH (non-condensing)
Installation	Standalone or rack-mount (mounting ears included)

Troubleshooting Guidelines

Problem	Possible Solution
No video displayed on monitor.	<ul style="list-style-type: none"> Verify proper monitor connection to one of the video outputs. Verify monitor supports the requested resolution.
Video displays gray or static local play image.	<ul style="list-style-type: none"> Verify the video source is connected to an HDMI or analog input. Verify input is selected to the output using the VIDEO SELECT buttons on the front of the N7142.
Unit is not properly providing PoE+.	<ul style="list-style-type: none"> Verify that the network cable is plugged into one of the three left-most ports (labeled POE+) of the 6-port Gbps Switch.
Installed card is not operating correctly.	<ul style="list-style-type: none"> Verify proper network and video connections. Refer to the <i>Quick Start Guide</i> for the installed Encoder/Decoder card (included in its shipment) for more information.

Please contact technical support at svsupport@harman.com or 256.461.7143 (x9900) for assistance with any installation issues.



Last Revised: 2/2018

© 2018 Harman. All rights reserved. Modero, AMX, AV FOR AN IT WORLD, HARMAN, and their respective logos are registered trademarks of HARMAN. Oracle, Java and any other company or brand name referenced may be trademarks/registered trademarks of their respective companies. AMX does not assume responsibility for errors or omissions. AMX also reserves the right to alter specifications without prior notice at any time. The AMX Warranty and Return Policy and related documents can be viewed/downloaded at www.amx.com.
3000 RESEARCH DRIVE, RICHARDSON, TX 75082 AMX.com | 800.222.0193 | 469.624.8000 | +1.469.624.7400 | fax 469.624.7153
AMX (UK) LTD, AMX by HARMAN - Unit C, Auster Road, Clifton Moor, York, YO30 4GD United Kingdom • +44 1904-343-100 • www.amx.com/eu/

5086590 REV: A



5086590