

**For an Instructional Video, go to YouTube:**

[http://www.youtube.com/watch?feature=player\\_embedded&v=tV7-SMHvbc](http://www.youtube.com/watch?feature=player_embedded&v=tV7-SMHvbc)

**System Checklist:**

VZ-QuickJib: Pivot Tube, Leveling Tube, Pan/Tilt Base, Camera Platform, Weight Bar, Adapter Plate for remote heads, Soft Case

VZ-QuickJib2: Pivot Tube, Leveling Tube, Main Tube Extension w/ Clamping Plates, Leveling Tube Extension, Pan/Tilt Base, Camera Platform, Weight Bar, Adapter Plate for remote heads, Soft Case x2

VZ-QuickJibKit: Contents of VZ-QuickJib plus Tripod & Dolly

VZ-QuickJib2Kit: Contents of VZ-QuickJib2 plus Tripod & Dolly

Notes: 1) Kits with -50 or -100 simply add the MC-50 or MC-100 remote heads. 2) Weight plates NOT INCLUDED



VZ-QuickJib



VZ-QuickJib Kit



VZ-QuickJib2

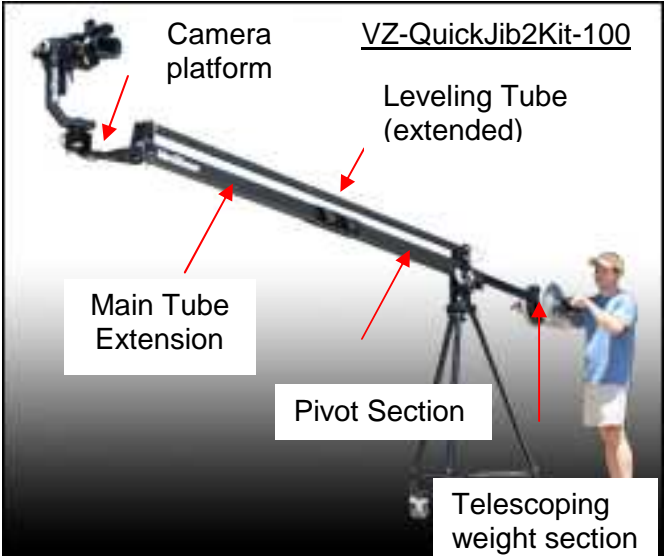


VZ-QuickJib2 Kit

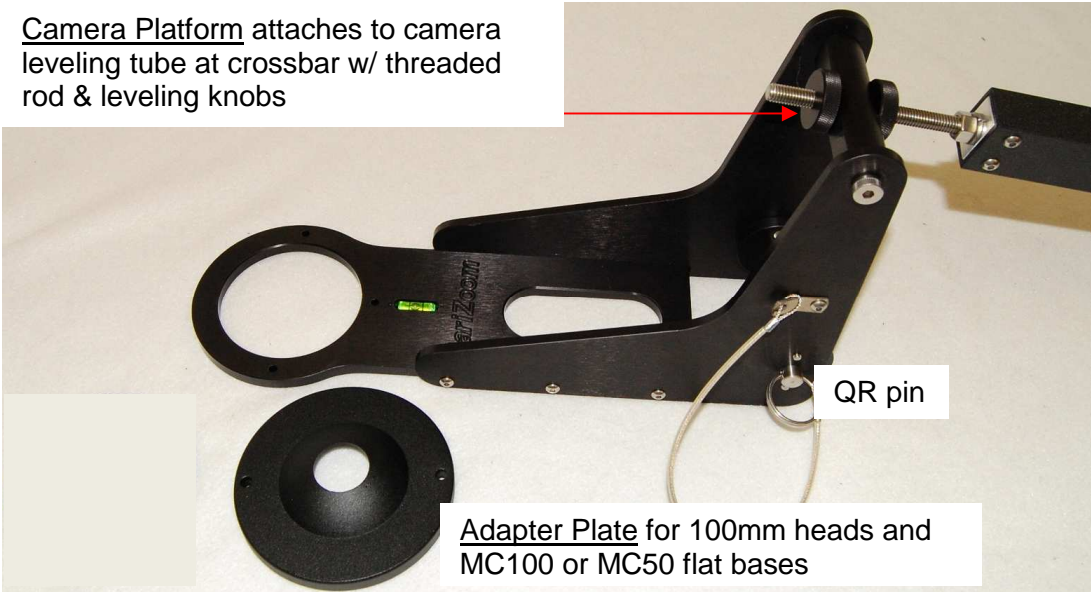
Tripod Feet Secured to Dolly - Shown Below



**DOLLY WARNING: Do not roll fully loaded jib around freely**

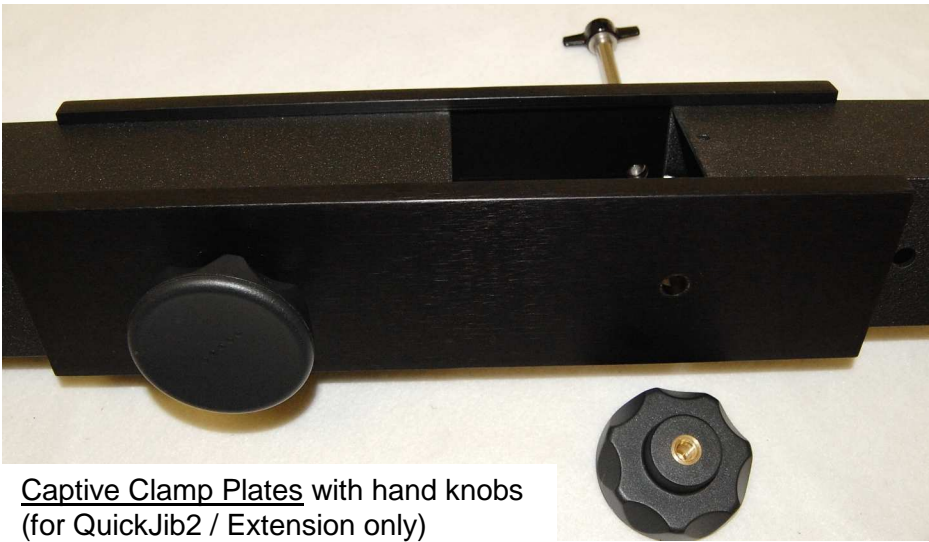


Camera Platform attaches to camera leveling tube at crossbar w/ threaded rod & leveling knobs



Adapter Plate for 100mm heads and MC100 or MC50 flat bases

Main Tube Extension: Align tubes/plates/holes and insert long thumbscrew through aligned holes, tighten hand knob thoroughly.



Captive Clamp Plates with hand knobs (for QuickJib2 / Extension only)

These instructions apply to all versions of the QuickJib – ignore components you didn't purchase. The VZ-QuickJib is the short jib-only version. The VZ-QuickJib2 is the extended jib-only version. VZ-QuickJibKit & VZ-QuickJib2Kit versions include tripod & dolly. All versions use standard barbell weight plates.

- \* Find level ground and fix tripod to dolly by inserting tripod feet into dolly receivers (pic next page). Extend feet until snug in blocks with spreader flattened.
- \* Attach Pan/Tilt Base & level tripod. Position tripod / dolly to desired location w/ 1 leg forward - **Push tripod/dolly ONLY at base of legs!** Lock dolly brakes. Sandbag or weight the dolly for extra safety.
- \* Remove QR pins and loosen tilt brake knob.
- \* Insert Pivot Section into pan-tilt base from top with the brake plate aligned to brake clamp. Align pivot hole and insert large QR pin.
- \* Telescoping Weight Section: 1) Insert weight bar **FIRST**, level out Pivot Section & lock brake. 2) Loosen locking knob, pull down slightly on weight bar, extend and tighten knob thoroughly.

Extended QuickJib - Attach Main Tube Extension and Leveling Tube Extension:

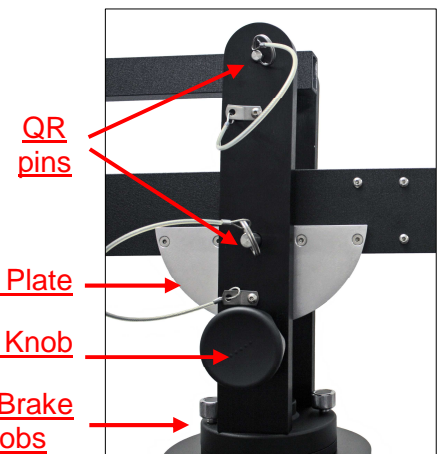
- Main Tube Extension (pic next page): position clamping plates protruding from extension tube to receive Pivot Tube. Leave hand knob loose so plates freely accept Pivot Tube. Carefully align tubes/plates/holes and insert long thumbscrew through aligned holes, tighten knob.
- Leveling Tube Extension: slide two interlocking sections together and secure with supplied thumbscrew.

- Camera Platform: remove QR pin, align pivot holes on platform with jib end block, reinsert pin.
- Attach Leveling Tube to Pan/Tilt Base w/ QR pin
- Attach Leveling Tube to Camera Platform (pic next page): insert threaded rod through crossbar at top of platform w/ 1 leveling knob behind crossbar, 1 in front.

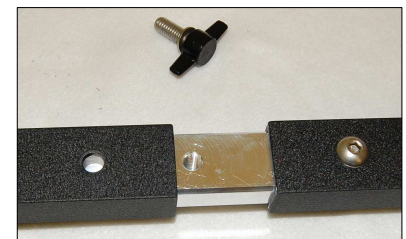
- Double-check that all joints are tight and dolly/tripod is level & secure.
- Attach your remote or manual head, level the camera platform, balance the camera, and run your cables.
- Add weights and camera/head controls to the weight bar. When counter-weighting, compromise between weight section length and amount of weight used. You should be able to boom up/down easily.
- **AVOID COLLISIONS WITH PEOPLE, OBJECTS, & POWER LINES. DON'T OPERATE IN HIGH WINDS!**
- **DISASSEMBLY: ALWAYS REMOVE WEIGHTS FIRST USING A HELPER AND A STAND TO SUPPORT CAMERA END OF JIB. IF YOU REMOVE CAMERA FIRST, JIB CAN SLING UP & TOPPLE!**



**Pan/Tilt Base**



**Leveling tube extension**



**Telescoping Weight Section**

Extends from pivot tube, lock position w/ hand knob

