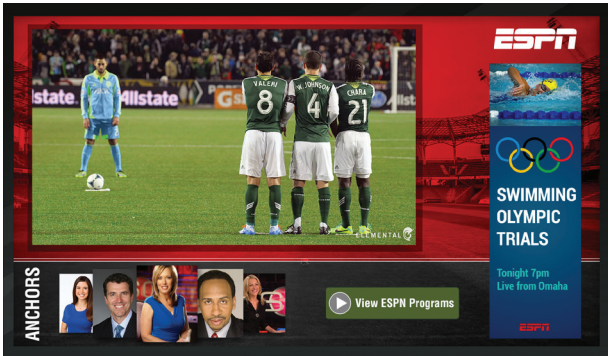


BRIGHTSIGN XT

STATE-OF-THE-ART TECHNOLOGY. ENTERPRISE PERFORMANCE.

BrightSign XT delivers unsurpassed performance for enterprise applications with a powerful 4K video engine, our fastest HTML and graphics engine and our most powerful CPU. This state-of-the-art technology for leading-edge digital signage installations supports H.265 decoding, True 4K HDR and Full HD video playback including Mosaic Mode. It offers a hardware-accelerated HTML5 rendering engine that enables flawless playback of multiple modular HTML5 assets including Javascript, CSS animations, WebGL and even swipe/gesture interactivity. All XT models offer Gigabit Ethernet, and XT is the only product line offering PoE+ as well as HDMI In for Live TV playback.



BrightSign XT243

Standard I/O Player

Offers our most powerful H.265 4K and Full HD video engine with 4K upscaling and dual decoding of one 4K and one Full HD video simultaneously. Delivers the best HTML5 rendering performance available for Enterprise applications. Includes the standard I/O package of Gigabit Ethernet with PoE+, GPIO, IR, analog/digital audio and an M.2 SSD interface.

Price: \$550



BrightSign XT1143

Expanded I/O Player

Includes all the features BrightSign XT243, plus serial, dual USB (type A and C) and Live TV playback via the HDMI 2.0a input to play content from any broadcast channel – even protected HDCP content.

Price: \$650

Features



H.265



Powerful 4K Video Engine



1080p60 dual decode



Live TV



Enterprise HTML5



IP Streaming



IP Streaming Server



BrightBeacon™



Power over Ethernet



B-Deploy



M.2 SSD Interface



BrightWall™



Mosaic Mode



Zones



Interactive



Live Feeds



Geo-Fencing



Tagging



BrightSign App



Sign Preview



Remote Snapshot



Remote View



BrightPlates™



Gigabit Networking

SPECIFICATIONS

MODEL	XT243	XT1143
VIDEO ENGINE DECODER		
Single 1080p60 video decoding	X	X
Dual 1080@60p decoding	X	X
Native 4K@60p CEA HDR10 video decoding	X	X
Dual video decoding of one 4K & one 1080p60 video	X	X
MEDIA FORMATS		
Video Codecs for 4K content: H.265	X	X
Video Containers for 4K H.265 content: .ts, .mov, .mp4, .mkv	X	X
Video Codecs for Full HD: H.265, H.264(MPEG-4, Part 10), MPEG-2, MPEG-1	X	X
Video Containers for Full HD content: .ts, .mpg, .vob, .mov, .mp4, .m2ts, .wmv	X	X
Images: BMP, JPEG, PNG	X	X
Audio: MP2, MP3, AAC, FLAC, OGG, and WAV (AC3 is passed through)	X	X
HTML5	X (Enterprise)	
DISPLAY RESOLUTIONS*		
Native 4K resolutions: 3840x2160x24/25/30/50/60p	X	X
Upscaling to: 3840x2160x24/25/29.97/30p	X	X
1920x1080x24/25/29.92/30/50/59.94/60p, 1920x1080x50/59.94/60i, 1600x1200x60p, 1440x1050x60/75p, 1440x900x60/75p, 1360x768x60p, 1280x1024x60/75p, 1280x960x60p, 1280x800x60p/75p, 1280x768x60p, 1280x720x50 /59.94/60p, 1024x768x60p, 800x600x60/75p, 720x576x50p/50i, 720x480x59.94/60p/60i, 640x480x60p	X	X
HARDWARE INTERFACES		
Locking Power Connector	X	X
External micro SD Slot (SDHC and SDXC); SDHC storage up to 32GB SDXC storage up to 2TB	X	X
M.2 SSD Interface	X	X
USB High Speed Host Port (also supports content updates)		X (2 ports: Type A&C)
Phoenix GPIO Port (8-pin bi-directional terminal block)	X	X
3.5mm RS-232 Serial Port		X
3.5mm IR In/Out	X	X
3.5mm Audio Out (analog & digital)	X	X
HDMI 2.0a Out	X	X
HDMI 2.0a Input		X
Ethernet	X (Gigabit)	
Power over Ethernet (PoE+)	X	X
M.2 (E) Keyed Wi-Fi/Bluetooth Connector	X	X
Wi-Fi External Antenna Connectors	X (dual)	
Status LEDs	Power, Error, Busy, Update	
Reset Button	X	X
Real Time Clock	X	X
FEATURES		
H.265 Decoding: smaller file sizes and higher quality content than H.264	X	X
Powerful 4K Video Engine: True 4K CEA HDR10, 4K upscaling, dual video decoding and superior scaling	X	X

MODEL	XT243	XT1143
Live TV: brings Live TV, even HDCP-protected content, to your signage via HDMI 2.0a Input		X
HTML5: hardware-accelerated engine that plays modular HTML assets flawlessly alongside high-bandwidth video	X (Enterprise)	
BrightBeacon™: 2-way Bluetooth/Beacon communication between mobile devices & signage	X	X
BrightWall™: synchronized playback across multiple displays	X	X
Zones: playback multiple content types on a single screen	X	X
Mosaic Mode: play a multitude of smaller resolution videos simultaneously that add up to the maximum video resolution of the player	X	X
IP Streaming: play streaming media	X	X
IP Streaming Server: serve IP streams from local storage	X	X
Encoding Server: transcode or composite/encode IP streams	X	X
Interactivity: connect virtually any type of interactive device to a multitude of interactive ports	X (GPIO, IR, UDP)	X (GPIO, dual USB, serial, IR, UDP)
Live Feeds: Live Data, Live Text, MRSS, Twitter, Flickr, etc.	X	X
Tagging: BrightSign Network users can assign media and player tags for highly targeted content distribution	X	X
BrightSign App: update signs with an iOS device	X	X
Geo-Fencing: trigger playback based on location (requires USB dongle)		X
Sign Preview: preview presentation playback in BrightAuthor	X	X
Remote Snapshot: remotely view a snapshot image of the display's playback	X	X
Remote View: remotely view a video clip of a running BrightSign presentation	X	X
BrightPlates™: easy template-based sign creation service	X	X
Networking: update, manage and schedule your signage	X	X
B-deploy: A setup feature to deploy many players at once	X	X
SOFTWARE		
Free BrightAuthor Software	X	X
BrightSign Networking Options	X	X
ACCESSORIES		
USB Button Pads		X
Wireless/Bluetooth Module	X	X
MicroSD Class 10 Cards (various capacities)	X	X
MISCELLANEOUS		
Dimensions (W x H x D)	179.9 x 21.9 x 204.2mm or 7.1 x 0.86 x 8 in	
Weight	20 oz	
Power	12V / 3A (36 Watts)	
Multi-Country Power & Regulatory Approvals	X	X
Built-in Wall Mounting Brackets	X	X
1 year warranty, parts and labor	X	X