



#### SYSTEM COMPONENTS

**Enclosure:**

15 mm 11-ply birch plywood

**Low Frequency Transducers:**

2 - 6.5" Cone  
1.5" Voice coil  
30 oz. Magnet

**High Frequency Transducer:**

1" Exit compression driver  
1.8" Titanium diaphragm  
15 oz. Magnet  
Radial horn

**Input Connectors:**

Cinch 142 screw terminal  
barrier strip

#### ACOUSTIC AND ELECTRICAL

**System Type:**

2-way sealed 0.6 ft<sup>3</sup>

**Impedance:**

8 Ω

**Crossover Network:**

Passive Time-Align® equalizer  
type at 2.1 kHz

**Time Offset Between Drivers:**

< ± 25 Microseconds

**Frequency Response:**

95 Hz to 20 kHz ±3 dB  
(4π Steradians)

**Sensitivity:**

95 dB SPL (1W @ 1m)

**Dispersion:**

70° Horizontal (-6 dB)  
60° Vertical (-6 dB)

**Power Handling:**

150 W continuous sine wave  
600 W instantaneous peak

**Peak SPL:**

>120 dB instantaneous peak  
spl above 250 Hz

#### PHYSICAL

**Finish:**

Black textured paint

**Dimensions:**

6"h x 21"w x 11"d  
17 cm x 56 cm x 27 cm

**Weight:**

25 lbs.  
12 kg

**Shipping Dimensions:**

28" x 16" x 16"  
72 cm x 41 cm x 41 cm

**Shipping Weight:**

31 lbs.  
14 kg

#### APPLICATIONS:

Audio Visual Presentations

Home Theater

Foreground Music Systems

Stair Riser Fill Speaker (only 6" tall)

Under Balcony Fill Speaker

**TA6000-S** The TA6000-S is a compact speech range loudspeaker system offering both high fidelity and high efficiency. The Time-Aligned™ studio quality sound provides detail and clarity not found in other designs. The frames of the 6.5" diameter woofers have been trimmed to allow an overall enclosure height of only 6". The high frequency driver is positioned to one side of the dual woofers to optimize the off-axis frequency response when the system is used in a horizontal orientation. The TA6000-S is made from durable birch plywood coated with black textured paint. It is fitted with hardware for attaching a yoke or mounting brackets on the top and back. The high sensitivity and power handling capacity combined with its diminutive size make it ideal for constricted spaces or wherever sightlines are a concern. It is ideal for use behind stair risers, beneath balcony overhangs, for foot-of-stage fill, or concealed any place a small, powerful high fidelity loudspeaker is needed. For high power applications, the addition of an INFRA™ subwoofer extends the capabilities to full range sound reinforcement.

**About Time-Align®** Time-Align® assures that the fundamental and overtones of a complex, transient, acoustical signal are presented to the listener in the same relationship as the electrical signal at the input terminals of the loudspeaker.

The conventional loudspeaker spreads out the sound in time: when a rapid series of transients occur the results are blurring and lost detail. With Time-Align®, a transient is presented as a tight package of energy, with the same time relationships as the natural sound. This means that a rapid series of transients will be heard clearly.

True Time-Alignment™ requires much more than just physically lining up the loudspeaker components. It requires consideration of the driver placement, driver delay and adjustment of the crossover delay parameters. This achieves the precise simultaneous acoustical arrival time of each driver throughout the crossover region.

Along with state-of-the-art laboratory instruments, the proprietary Time-Align® generator, built by Ron Wickersham, is used in designing our loudspeaker systems. The Time-Align® generator is founded upon different underlying mathematical principles than are used in the more common Fourier based measurement equipment.

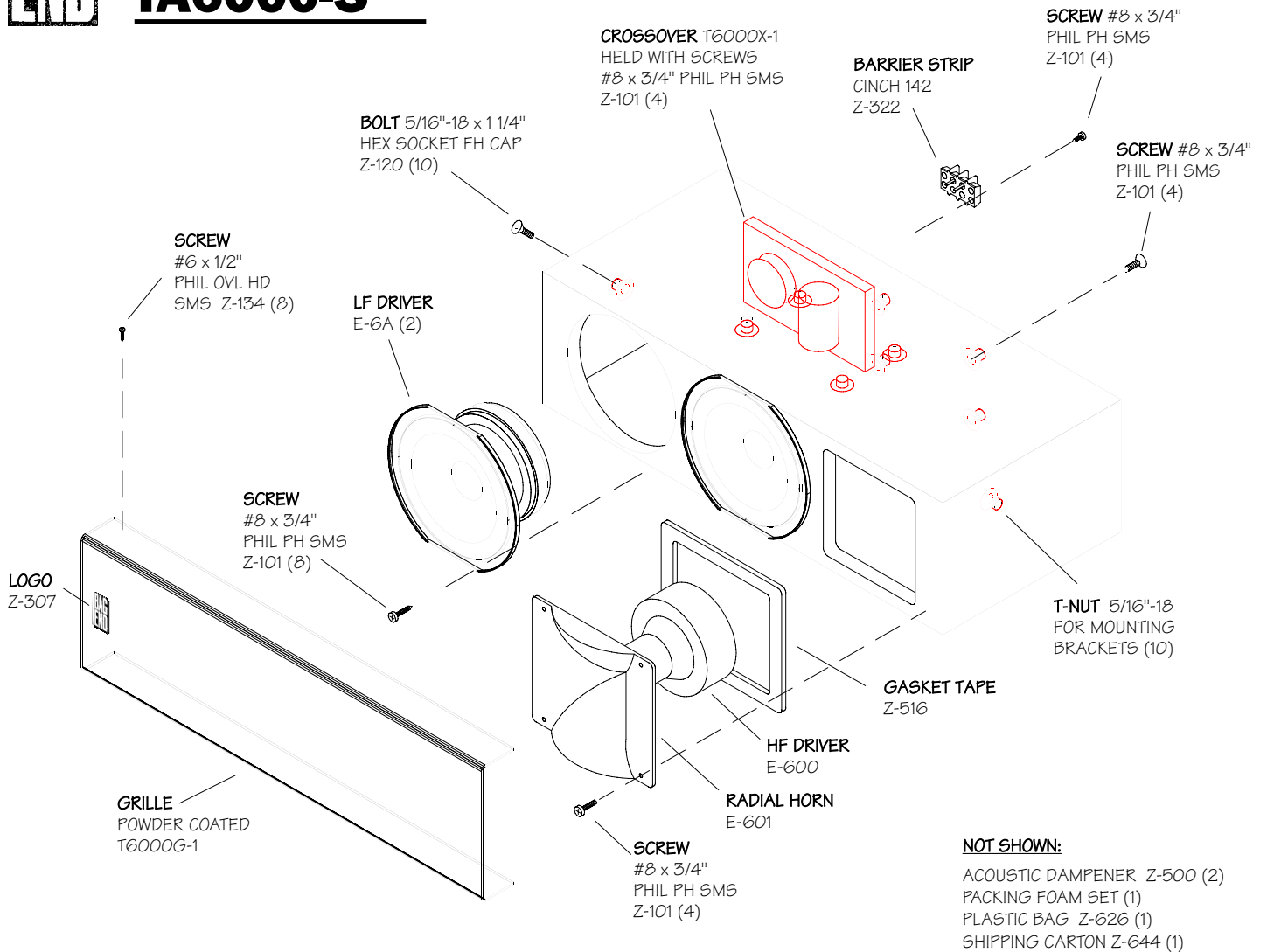
When comparing a genuine BAG END Time-Aligned™ speaker system to any other, our additional design work is easy to hear and appreciate. The dramatic clarity, realism, and overall pleasant sound of our Time-Aligned™ loudspeakers is noted throughout the world.

BAG END Loudspeakers  
22272 Pepper Road  
Barrington, Illinois  
60010 USA  
Voice 847 382 4550  
Fax 847 382 4551  
www.bagend.com

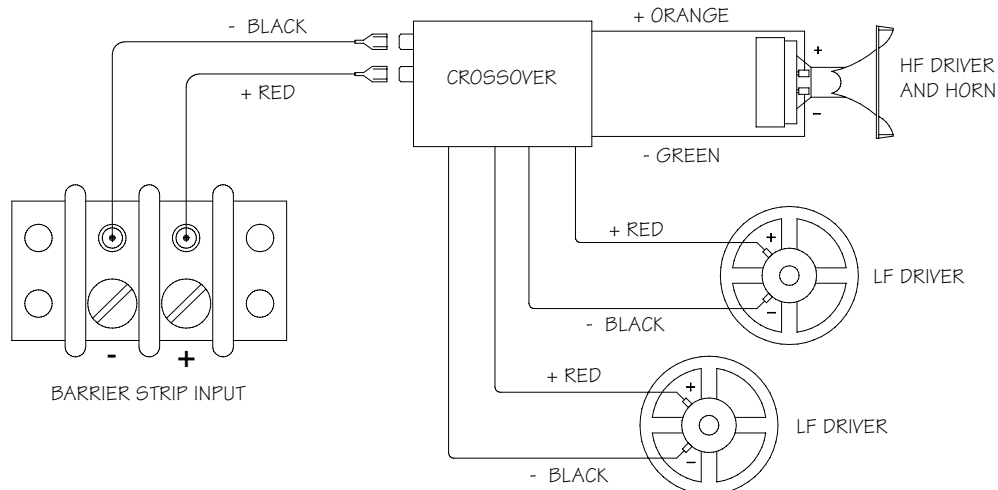




# TA6000-S



## SYSTEM SCHEMATIC

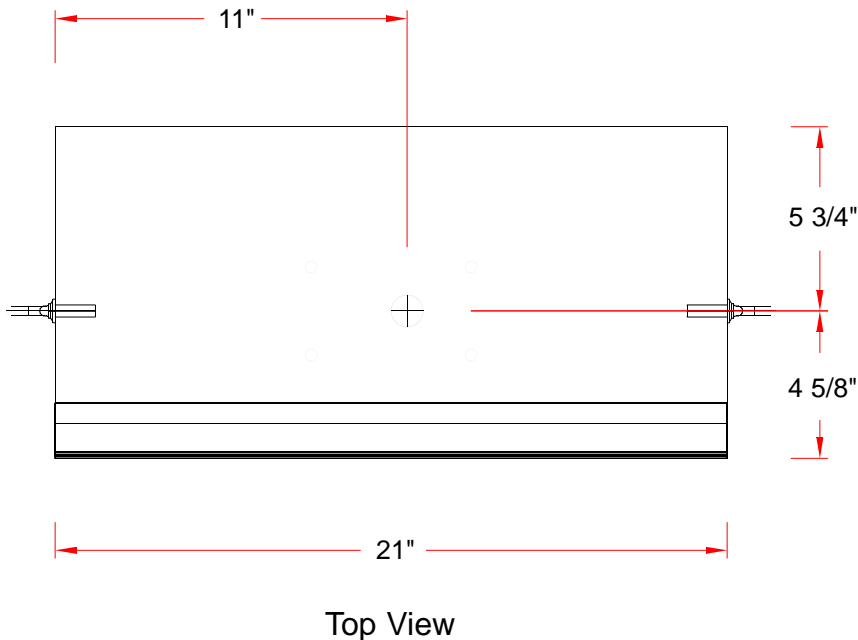
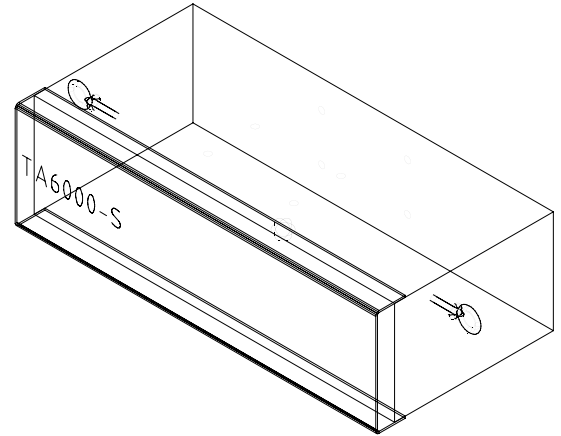
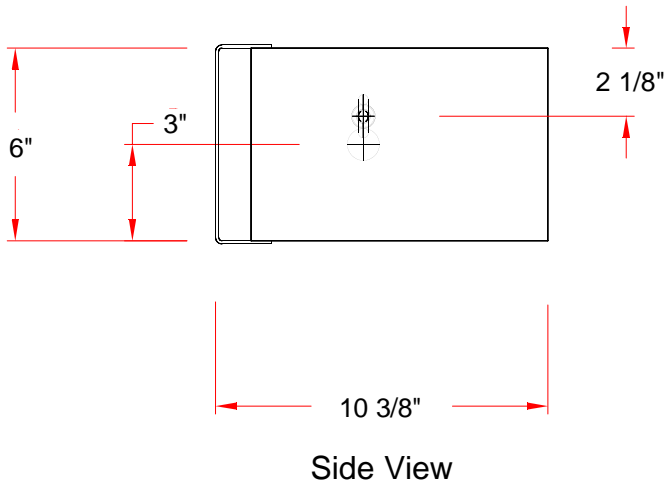


# BAG END

**TA6000-SF6 TIME-ALIGN®**

## Optional rigging points

⊕ = Center of Gravity



### Warning:

Mounting and rigging loudspeakers requires experienced professionals. Improperly installed loudspeakers can result in property damage, personal injury, death and/or liability to the installing contractor.

**F6 option includes flypoints as shown, plus 3 x 5/16"-18 forged shoulder eyebolts.**

BAG END Loudspeakers  
22272 Pepper Road  
Barrington, Illinois  
60010 USA  
Voice 847 382 4550  
Fax 847 382 4551  
www.bagend.com

