

JVC

GY-HM620 Handheld Mobile News Camera *ProHD*



Camera shown with optional shotgun microphone.

The GY-HM620 is an advanced handheld ProHD camera that delivers unsurpassed imagery and offers features for news, sports, and independent production. Based on JVC's popular GY-HM600, the new 620 has upgraded CMOS devices for greater sensitivity and a brighter LCD display for outdoor daylight viewing. Versatile and extremely easy to use, there's no better camera for fast paced HD field production.

Key Features

- Newly developed 1/3-inch 12-bit CMOS sensors (1920 x 1080 x 3) — **Upgraded Feature!**
- F12 Sensitivity — **Improved!**
- 23x Fujinon Auto focus zoom lens with manual functions — F1.6-3.0, 23x, f=4.1-94.3mm (35mm conversion: 29 to 667mm)
- Optical image stabilizer
- SDXC/SDHC memory card recording (2 slots for dual-backup, continuous recording)
- Large file size support with SDXC card
- 4 position ND filter (clear, 1/4, 1/16, 1/64)
- 0.45-inch 1.22M pixel color viewfinder
- Upgraded 3.5-inch 920K pixel LCD display
- **Multiple encoding formats:**
HD MPEG2 (35/25/19Mbps) / AVCHD 1920x1080 60i / SD H.264
- **Wide media format compatibility:**
.MOV (Final Cut Pro) / .MP4 (XDCAM EX™) / AVCHD

JVCKENWOOD

GY-HM620

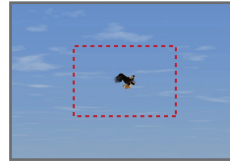
New High Performance Full HD 1/3-inch CMOS Sensors

At the heart of the GY-HM620 are three, newly designed 1/3-inch CMOS sensors, each capable of capturing full HD 1920 x 1080 resolution images. Offering an excellent sensitivity of F12 (60Hz) /F13 (50Hz) and a remarkable signal-to-noise ratio, the devices provide superior precision and color reproduction.

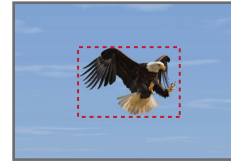
23x Fujinon Auto Focus Zoom Lens with Manual Functions

The GY-HM620 is equipped with a Fujinon wide angle 23x zoom lens that delivers superior low-light performance with brightness at the tele end. The lens offers F1.6-3.0, a focal range of 29mm-667mm (35mm equivalent) and includes servo zoom, manual focus, and iris rings, along with a four-position (clear, 1/4, 1/16 and 1/64) ND filter. Other features include an optical image stabilizer, chromatic aberration correction.

Original Image No Zoom (0X)



14X Optical Zoom



23X Optical Zoom



GY-HM620's long zoom range means that you can get shots not possible with other cameras its size.



Affordable Recording & Storage

The GY-HM620 is designed to create hours of pristine recordings on affordable non-proprietary SDHC media in a variety of image formats. Its dual codec design also allows you to make two copies of your program simultaneously. Dual SDHC/SDXC card slots offer recording and relay recording with reliable and cost-effective media. In relay recording mode, you can shoot continuously and seamlessly over multiple cards.

Professional Features & Controls

New Full HD 1/3-inch CMOS Sensors
Three newly developed CMOS sensors offer an excellent sensitivity of F12 (60Hz) /F13 (50Hz).

Focus Assist
JVC's patented focus assist system highlights the edges of objects in the image to help the operator keep focus.

New, Brighter 0.45-inch 1.22M pixel Color Viewfinder
A high-resolution LCOS viewfinder with a crisp and detailed 16:9 aspect ratio image.

Upgraded 3.5-inch 920K pixel LCD Display
The top-mounted position of the high-resolution 3.5-inch LCD monitor is ideal for shooting at various angles in handheld camera applications.

Fujinon 23x Optical Zoom Lens
Fujinon wide angle 23x zoom lens delivers superior low-light performance.

Optical Image Stabilizer
The built-in OIS helps to correct lateral and vertical movement of the camera.

FALCONBRID High Speed Processor
JVC's high-speed processor for advanced video applications achieves stunning image quality with superior processing power on a single chip.

Camera shown with optional shotgun microphone.

Notes: Apple, Apple logo, Macintosh, QuickTime, and Final Cut Pro are trademarks of Apple Inc. registered in the United States and other countries.

"AVCHD Progressive/AVCHD" and the "AVCHD Progressive/AVCHD" logo are trademarks of Panasonic Corporation and Sony Corporation.

Dolby is a registered trademark of Dolby Laboratories. The SD, SDHC and SDXC logos are trademarks of the SD Card Association. HDMI, the HDMI Logo, and High-Definition Multimedia Interface are trademarks or registered trademarks of HDMI Licensing LLC in the United States and other countries.

Product and company names mentioned here are trademarks or registered trademarks of their respective owners.

Specifications subject to change.

JVCKENWOOD

© 4/1/2016

"JVC" is the trademark or registered trademark of JVCKENWOOD Corporation.