

# INSTRUCTION SHEET

## DS-LSH1416-B

### FV LOCKSHELF 14X16

#### THANK YOU

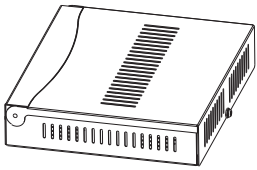
Thank you for purchasing the DS-LSH1416-B FV LOCKSHELF 14x16. Please read these instructions thoroughly before installing this product.

#### TOOLS REQUIRED/WEIGHT RATING

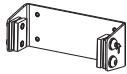
• #2 Phillips Screwdriver

Weight Rating: 10 lbs.

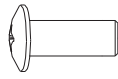
#### HARDWARE/ITEMS SUPPLIED



Lockshelf (x1)  
A



Connecting Piece (x1)  
B



M6x8 (x4)  
C



D6 Washer (x4)  
D



Key (x1)  
E



5mm Hex Key (x1)  
F



5mm Hex Bit (x1)  
G



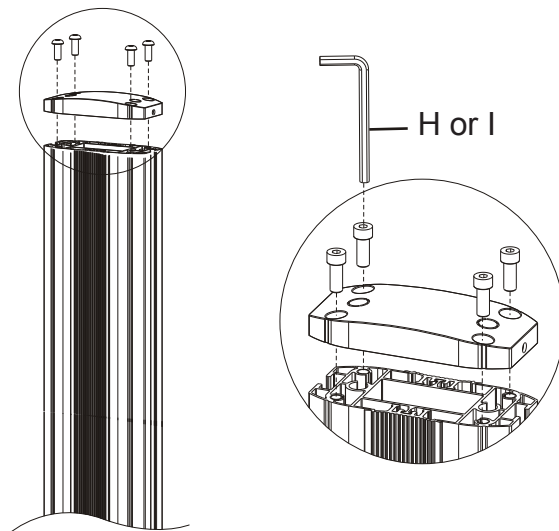
6mm Hex Key (x1)  
H



6mm Hex Bit (x1)  
I

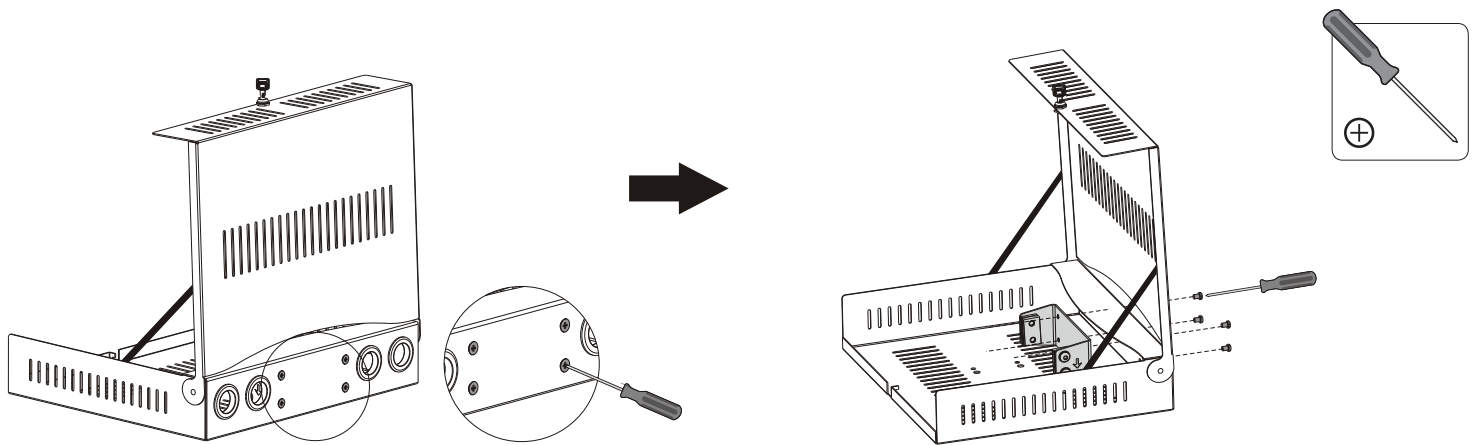
#### INSTALLATION

1) If already installed, remove the top with a 6mm Hex Key/Bit.

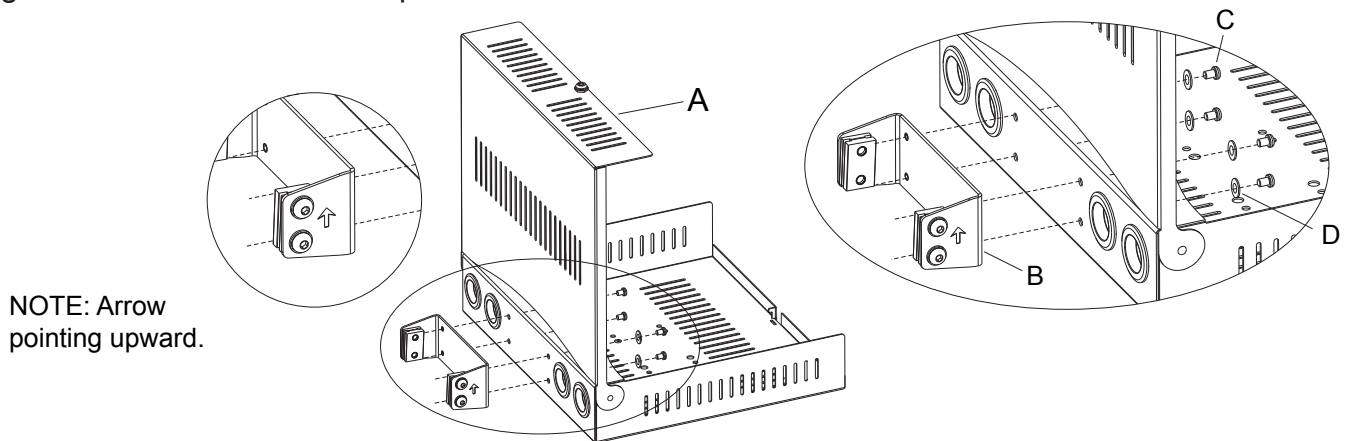


## HORIZONTAL INSTALLATION

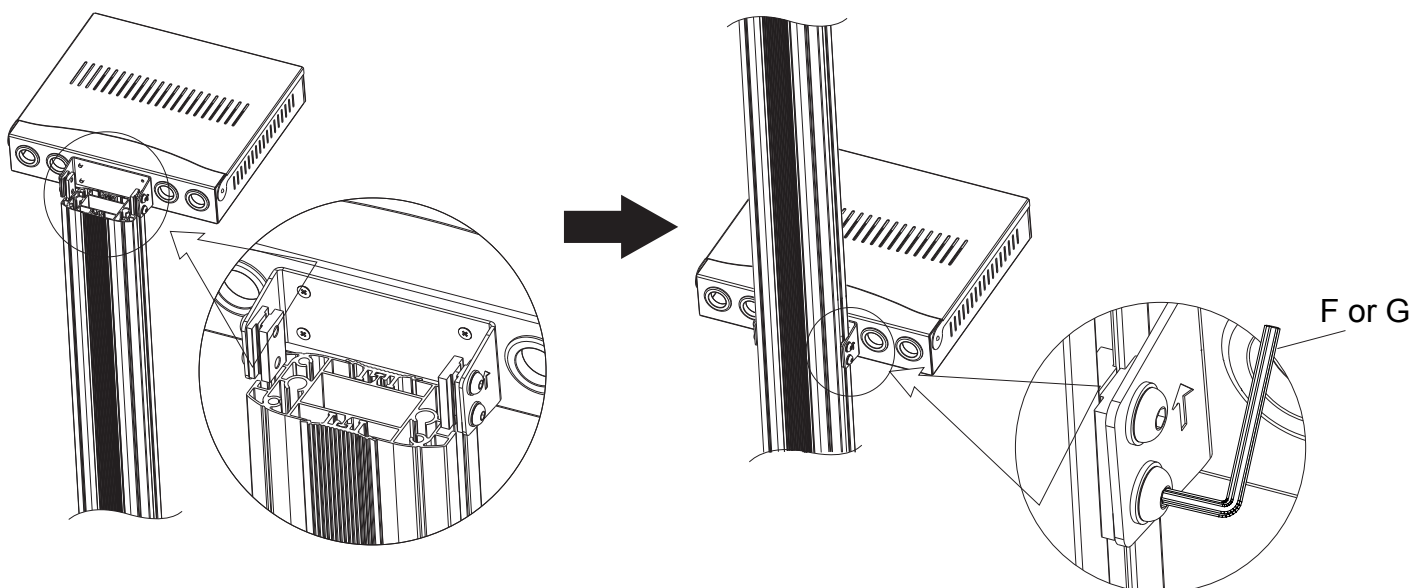
- 1) The connecting piece comes installed inside the lockshelf. Remove the connecting piece by unscrewing the four Phillips head screws from the outside of the lockshelf.



- 2) Attach the connecting piece to the lockshelf using the appropriate screws and washers.  
3) Tighten all screws with a Phillips screwdriver.

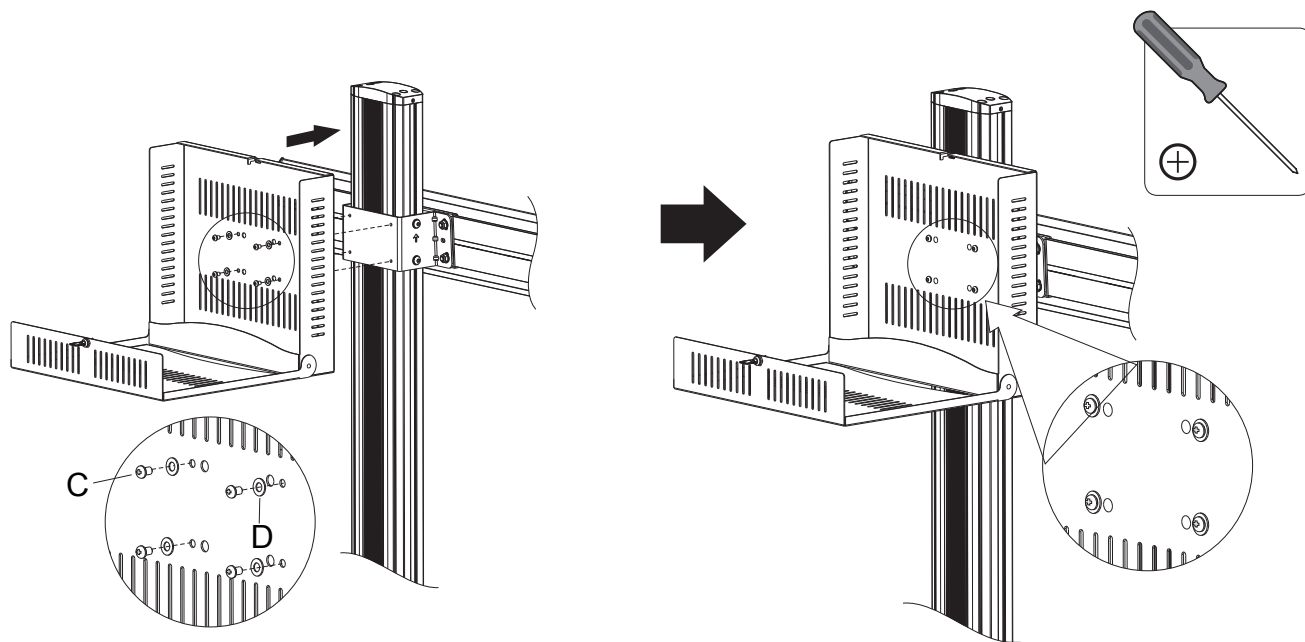
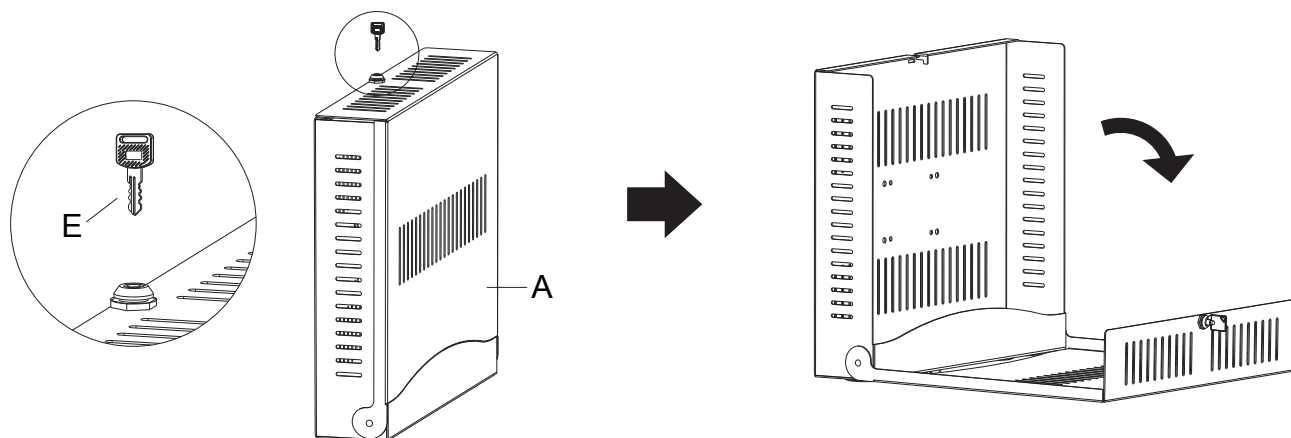


- 4) Insert the lockshelf to the desired position along the column rails and tighten all screws to secure it with a hex key.



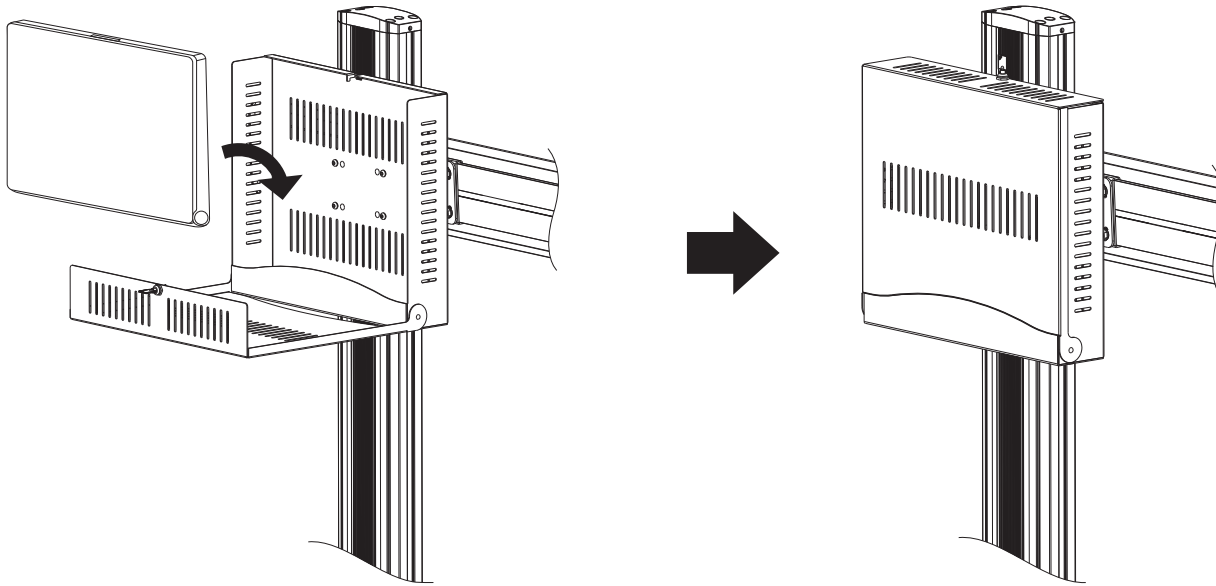
## VERTICAL INSTALLATION

1) Use the key to open the lockshelf.



## VERTICAL INSTALLATION (Continued)

- 2) Attach the lockshelf to the plate mount bracket using the appropriate screws. Tighten the screws with a Phillips screwdriver.
- 3) Place your item(s) gently into the lockshelf, close the lid and lock the shelf.



### WARRANTY

Middle Atlantic Products (the "Company") warrants the DS-LSH1416-B to be free from defects in material or workmanship under normal use and conditions for a period of (7) seven years from date of shipment by the Company.

The Company's entire liability to the purchaser, and the purchaser's (or any other party's) sole and exclusive remedy, under this warranty shall be limited, at the Company's option, to either (a) return of and refund of the price paid for, or (b) repair or replacement at the Company's factory of the products purchased, or any part or parts thereof, which the Company has determined to be defective after inspection thereof at the Company's factory.

This warranty does not cover damage due to acts of God, accident, misuse, abuse or negligence by parties other than the Company, or any modification or alteration of the products. In addition, this warranty does not cover damage due to improper handling, assembly, installation or maintenance.

THIS WARRANTY IS IN LIEU OF ALL OTHER WARRANTIES OF ANY KIND, EITHER EXPRESSED OR IMPLIED, INCLUDING, BUT NOT LIMITED TO, IMPLIED WARRANTIES OF MERCHANTABILITY AND FITNESS FOR A PARTICULAR PURPOSE.

TO THE MAXIMUM EXTENT PERMITTED BY APPLICABLE LAW, IN NO EVENT SHALL THE COMPANY BE LIABLE FOR ANY SPECIAL, INCIDENTAL, INDIRECT, OR CONSEQUENTIAL DAMAGES WHATSOEVER (INCLUDING, WITHOUT LIMITATION, DAMAGES FOR LOSS OF BUSINESS PROFITS, BUSINESS INTERRUPTION OR ANY OTHER PECUNIARY LOSS) ARISING OUT OF THE USE OF THE PRODUCTS PURCHASED, EVEN IF THE COMPANY HAS BEEN ADVISED OF THE POSSIBILITY OF SUCH DAMAGES. THE COMPANY'S LIABILITY TO THE PURCHASER (OR ANY OTHER PARTY) HEREUNDER, IF ANY, SHALL IN NO EVENT EXCEED THE PURCHASE PRICE OF THE PRODUCTS PAID TO THE COMPANY.

### Corporate Headquarters

Corporate Voice 973-839-1011 - Fax 973-839-1976 / International Voice +1 973-839-8821 - Fax +1 973-839-4982  
middleatlantic.com - info@middleatlantic.com

### Middle Atlantic Canada

Voice 613-836-2501 - Fax 613-836-2690 / middleatlantic.ca - customerservicecanada@middleatlantic.ca

### Factory Distribution

USA: NJ - CA - IL Canada: ON - BC

**At Middle Atlantic Products we are always listening. Your comments are welcome.**