

LIMITED WARRANTY

This product is warranted to the original consumer purchaser to be free from defects in materials and workmanship under normal installation, use and service for a period of one (1) year from the date of purchase as shown on the purchaser's receipt.

The obligation of Rolls Corporation under this warranty shall be limited to repair or replacement (at our option), during the warranty period of any part which proves defective in material or workmanship under normal installation, use and service, provided the product is returned to Rolls Corporation, TRANSPORTATION CHARGES PREPAID. Products returned to us or to an authorized Service Center must be accompanied by a copy of the purchase receipt. In the absence of such purchase receipt, the warranty period shall be one (1) year from the date of manufacture.

This warranty shall be invalid if the product is damaged as a result of defacement, misuse, abuse, neglect, accident, destruction or alteration of the serial number, improper electrical voltages or currents, repair, alteration or maintenance by any person or party other than our own service facility or an authorized Service Center, or any use violative of instructions furnished by us.

This one-year warranty is in lieu of all expressed warranties, obligations or liabilities. ANY IMPLIED WARRANTIES, OBLIGATIONS, OR LIABILITIES, INCLUDING BUT NOT LIMITED TO THE IMPLIED WARRANTIES OF MERCHANTABILITY AND FITNESS FOR A PARTICULAR PURPOSE, SHALL BE LIMITED IN DURATION TO THE ONE YEAR DURATION OF THIS WRITTEN LIMITED WARRANTY. Some states do not allow limitations on how long an implied warranty lasts, so the above limitation may not apply to you.

IN NO EVENT SHALL WE BE LIABLE FOR ANY SPECIAL, INCIDENTAL OR CONSEQUENTIAL DAMAGES FOR BREACH OF THIS OR ANY OTHER WARRANTY, EXPRESSED OR IMPLIED, WHATSOEVER. Some states do not allow the exclusion or limitation of special, incidental or consequential damages so the above limitation or exclusion may not apply to you. This warranty gives you specific legal rights, and you may also have other rights which vary from state to state.



This symbol indicates that there are important operating and maintenance instructions in the literature accompanying this unit.

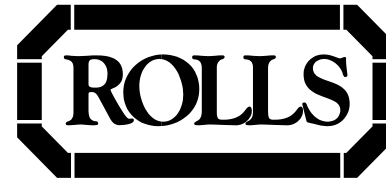
PM52 Headphone Tap

- Converts speaker level signals to headphone level
- Eliminates heavy wedge monitors
- Passive - no power required

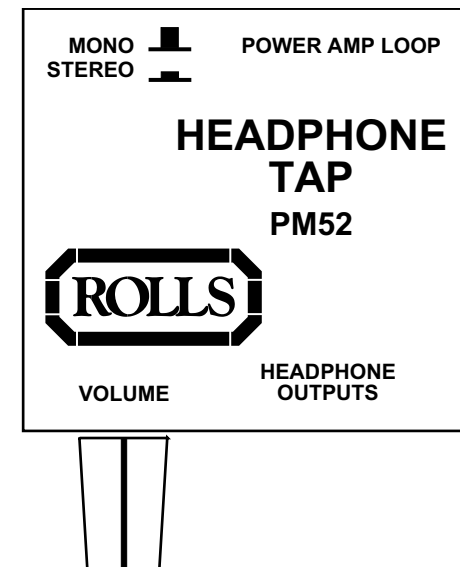
The PM52 is the ideal device for anyone wanting to use headphones rather than a wedge or speaker monitor. Drummers, instrumentalists, and sound professionals alike have all benefited from the PM52.



Rolls Corporation
Salt Lake City, UT
9/95



PM52 HEADPHONE TAP



Owners Manual

INTRODUCTION

Thank you for your purchase of the PM52 Headphone Tap. The PM52 is for connecting headphones to a speaker line. The 1/4" Mono/stereo loop jacks are for cascading more boxes in series. There are two headphone jacks and volume control. The Headphone Tap uses the speaker line signal for power, therefore requires no batteries or external power.

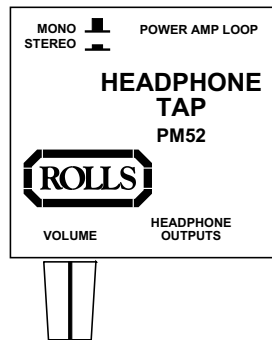
DESCRIPTION

MONO/STEREO Switch: Selects between a Mono or Stereo input mode.

POWER AMP LOOP: Two paralleled 1/4" stereo TRS jacks, one for receiving the input signal and the other for connecting to a speaker or other input device.

VOLUME: Controls the level of the signal to the headphones.

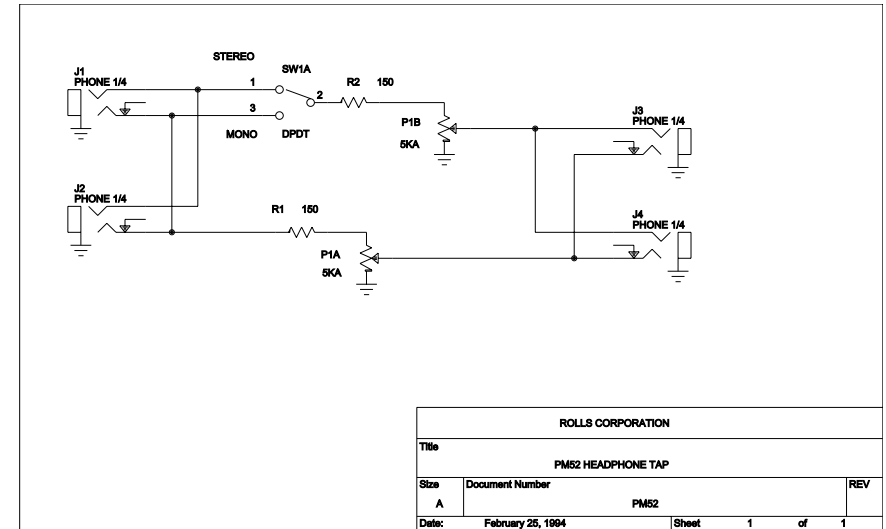
HEADPHONES: Two 1/4" stereo TRS jacks for connection to stereo headphones.



SPECIFICATIONS

Input Impedance: 150 Ω
Size: 2.25" x 2.5" x 1.25"
(5.7 x 6.3 x 3.2 cm)
Weight: 1lb (.45 Kg)

SCHEMATIC



WARNING

USING THIS SYSTEM AT EXCESSIVE VOLUMES CAN CAUSE
PERMANENT HEARING DAMAGE.

USE AS LOW A VOLUME AS POSSIBLE

In order to use this system safely, avoid prolonged listening at excessive sound pressure levels. Please use the following guidelines established by the Occupational Safety Health Administration (OSHA) on maximum time exposure to sound pressure levels before hearing damage occurs.



90 dB SPL at 8 hours
95 dB SPL at 4 hours
100 dB SPL at 2 hours
105 dB SPL at 1 hour
110 dB SPL at 1/2 hour
115 dB SPL at 15 minutes
120 dB SPL - **avoid or damage may occur**

It is difficult to measure the exact Sound Pressure Levels (SPL) present at the eardrum in live applications. In addition to the volume setting on this Personal Monitor unit, the SPL in the ear is affected by ambient sound from floor wedges or other devices. The isolation provided by the fit of quality earphones is also an important factor in determining the SPL in the ear.

Follow these guidelines in the use of this product to protect your ears from damage:

1. Turn up the volume only to the point where hearing is comfortable.
2. Ringing in the ears may indicate that the levels are too high. Lower the volume level.
3. Have your ears checked by an audiologist on a regular basis. If you experience wax buildup in your ears, stop using the system until an audiologist has examined your ears.
4. Wipe the earphones with an antiseptic before and after use to avoid infections. Stop using the earphones if they are causing great discomfort or infection.