

Screw-mount Aluminum Grille (for 8" speaker)

Description:

Lowell grille Model RS8-AW is an attractive aluminum ceiling grille for mounting 8" loudspeakers. Its two-step design is a signature grille in the industry and is ideal for applications where a grille with visual depth is desired. The non-corrosive aluminum material is finished in durable white powder epoxy paint to provide long lasting quality appearance. It is ideal for use in offices, hotels, schools, medical, retail, and commercial facilities of all kinds. The RS8-AW grille is precision formed from a single piece of 0.032 aluminum making it suitable for a wide variety of climates including some indoor and outdoor applications where steel grilles would not be suitable. It features a contoured edge and a two-step stamped design with circular perforation pattern to achieve an embossed multi-level appearance. Each grille is complete with eight matching 8-32 Phillips-head screws; four for mounting the speaker and four for mounting the speaker-grille assembly to the backbox or mounting ring (order separately).

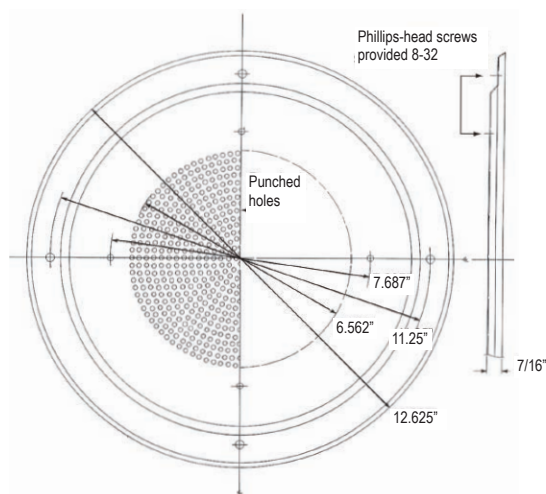


Features:

- Precision formed from single piece (.032) aluminum
- Contoured edge with 2-step stamped design
- 12.625" diameter
- 8 (8-32) Phillips-head screws

A & E Specifications:

The grille for 8" speakers shall be Lowell Model RS8-AW. It shall be fabricated one-piece 0.032 aluminum with a multi-level finished surface with a peripheral flange of 60-degrees. The grille diameter shall be 12.625" with a mounting projection of 0.437". The grille shall have four 0.218" holes spaced at 90-degree intervals for screw mounting the specified 8" speaker. It shall also have four .25" holes spaced at 90-degree intervals on a 11.25" bolt circle for mounting specified backbox or mounting ring. The grille shall be finished in white powder epoxy and include matching screws for speaker and backbox mounting.



Compatible Components: (order separately)

Speaker (8"):	805, 810, 8C10MRA, CT830, 8A50
Horn (8"):	LUH15T
Backbox:	CP84, CP87, CP810, DX58, DX108, XCP84, XCP87, XCP810, 8XD4, 8PSBX, RF841, RF871
T-bridge:	LBS8, LBS8R1, LBS8CP
Support Rails:	SS24, SS30, SS48
Mounting Rings:	PR81624, RMP8

Accessory Selection Chart (order separately):

Grille No.	Dia. (in)	For Speaker Size (in)	Backbox or Mounting Ring No.	T-bridge or Rails (for suspended tile ceilings)
RS8-AW	12.875	8	CP84, CP87, CP810, DX58, DX108	LBS8CP or SS rails
			XCP84, XCP87, XCP810, 8XD4, 8PSBX	LBS8 or LBS8R1
			RF841, RF871	n/a
			No backbox	LBS8 or LBS8R1
			Mounting ring (instead of backbox) PR81624, RMP8	n/a

Note: Stackable backbox Models 8PSBX and 8XD4 have a conical shape that will not accept a speaker with a large transformer such as TLM870.