

LEDBeam

**MULTI
CHIP**
LED TECHNOLOGY

**BEAM
ANGLE 7°**

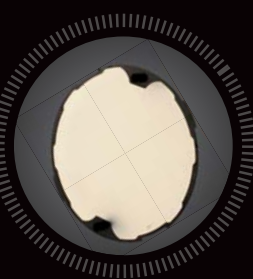
**EXTREMELY
FAST PAN
TILT
MOVEMENT**

Accessories

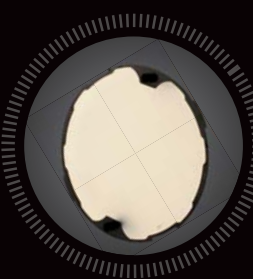
Top Hat



Diffusion Filter 25°



Diffusion Filter 40°



Cardboard

Single Top Loader Case
ROBIN 100 LEDBeam™

Six-Pack Top Loader Case
ROBIN 100 LEDBeam™

Eight-Pack Top Loader Case
ROBIN 100 LEDBeam™

Twelve-Pack Top Loader Case
ROBIN 100 LEDBeam™



Exterior dimensions

307 x 357 x 270 mm
(12.1" x 14.1" x 10.6")

360 x 570 x 270 mm
(14.2" x 25.4" x 10.6")

1000 x 595 x 580 mm
(39.4" x 23.4" x 22.8")

1200 x 600 x 580 mm
(47.2" x 23.6" x 22.9")

1200 x 600 x 850 mm
(47.2" x 23.6" x 33.5")



MIX
Paper from
responsible sources
FSC® C014138

www.robe.cz



Head office: ROBE lighting s. r. o. | Hážovice 2090 | 756 61 Rožnov pod Radhoštěm | Czech Republic | Tel.: +420 571 751 500 | Fax: +420 571 751 515 | E-mail: robe@robe.cz
Factory: ROBE lighting s. r. o. | Palackého 416 | 757 01 Valašské Meziříčí | Czech Republic | Tel.: +420 571 751 515 | Fax: +420 571 751 515 | E-mail: robe@robe.cz | UK: ROBE UK Ltd. | Northampton, UK | Tel.: 01604 741000 | E-mail: info@robeuk.com | America: ROBE Lighting Inc. | 12349SW 53rd Street, Suite 202 | Cooper City | FL, USA | Tel.: +1 954 680 1901 | E-mail: info@robelighting.com
South-East Asia: ROBE S.E.A. | Singapore | Tel.: +65 8118 6665 | E-mail: info@robe-sea.com | United Arab Emirates: Makateb Business Centre | Makeen Tower, Corner of 9th and 10th Street Abu Dhabi | UAE | Tel.: +971 2 657 3461 | E-mail: info@robe-me.com | Russia and CIS: Taganskaya str. 26 -1 - 72 | 109004 Moscow | Russia | Tel: + 7 495 504 9569 | E-mail: info@roberussia.com
Central and South America: Galicia 1200 ap 303 | 1100 Montevideo | Uruguay | Tel.: +5982 2900 67 47 | E-mail: info@robeccsa.com

September 2012 © ROBE lighting s. r. o. All specifications subject to change without notice. Patents pending.



ROBIN® 100

**PERFECT
COLOUR
MIXING**

**INDIVIDUAL
CONTROL
OF 3 LED
ZONES**

**TRUE
WHITES**



LEDBeam

Innovative technology

Product diagrams

Fine touch features

Robe's super fast ROBIN® LED Beam 100 is the ultimate effects lighting tool. A highly optimized motorised control produces speedy pan and tilt movement, three LED zones allow the creation of various colour chases, and the extra punchy 7 degree beam angle can be amplified with fast strobing. Simplified control via pre-programmed colours, colour chases and effects on a virtual colour wheel and various strobing and pulsing effects allow quick and easy programming.

Source

- Light source: 12x 15W RGBW LED multichips
- Led Life Expectancy: minimum 60.000 hours
- Typical Lumen Maintenance: 70% @ 60.000 hours

Optical System and effects

- High efficient component optics
- Beam angle 7°
- RGBW (CMY), 8 or 16 bit colour mixing
- CTO filter
- Virtual color wheel with pre-programmed 237 colours including whites (2.700 K, 3.200 K, 4.200 K, 5.600 K and 8.000 K)
- Three LED zones
- Individual color control of each LED zone
- Tungsten lamp effect at whites 2.700 K and 3.200 K
- Colour rainbow effects in both directions with variable speed
- Zone colour effects in both directions with variable speed
- High resolution dimmer 0-100%
- Strobe effect with variable speed (max. 20 flashes per second)
- Individual zone strobe effects with variable speed
- Pre-programmed random strobe & pulse effects

Electrical Specification

- Electronic auto-ranging
- Input voltage: 100-240V AC, 50/60Hz
- Max. power consumption: 200W

Mechanical Specification

- Height: 314 mm (12.4")
- Width: 233 mm (9.2")
- Depth: 149 mm (5.9")
- Weight: 4.5 kg (9.9 lbs)

Thermal

- Maximum ambient temperature: 45 °C (113 °F)
- Maximum housing temperature: 75 °C (167 °F)

Control and programming

- Setting & Addressing: two-row LCD display & 4 control buttons
- Protocols: USITT DMX-512, RDM
- Optional wireless version available: CRMX™ technology from Lumen Radio
- Control channels: 35, 19, 14, 9, 35, 37
- 6 DMX protocol modes
- 3-editable programs, each up to 25 steps
- Stand-alone operation
- Pan and Tilt movement range: 450°/300°
- Colour rainbow effects in both directions with variable speed
- Zone colour effects in both directions with variable speed
- Data in/out: Locking 5-pin XLR
- Power in/out: Neutrik PowerCon
- Built-in analyzer for easy fault finding

Optional accessories

- Top hat
- Diffusion filter 25°
- Diffusion filter 40°
- Line Cords PowerCon In
- Line Cords PowerCon In/Out

Rigging

- Mounting points: 1 pair of ¼-turn locks
- Omega bracket with ¼-turn quick locks

Innovative optical system

Incorporating sophisticated beam optics combined with internal top hat for each output lens and external top hat for precise control of the light beam. (patent pending)



Multichips

New LED technologies use several LED chips on a single module that creates just perfect point source of extremely smooth new dimensional colour mixing of RGBW.



Individual control of LED zones

Unique design and control of the LED PCB's allows individual control of each LED zone for the creation of eye-candy effect.



True White Colours

Spotless colormixing of specially calibrated LEDs together with predefined values on a Virtual Colour wheel channel allow quick direct calling of exact white hues of 2.700 K, 3.200 K, 4.200 K, 5.600 K and 8.000 K.



Tungsten effect

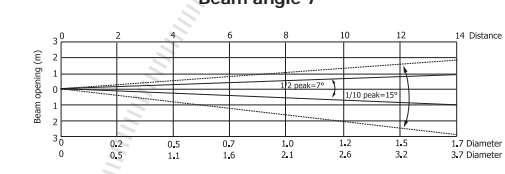
In the Halogen lamp mode predefined for White Halogen 2.700 K and 3.200 K, the Dimmer channel initiates halogen lamp-like behaviour (red effect and thermal delay) during dimming.

Colours

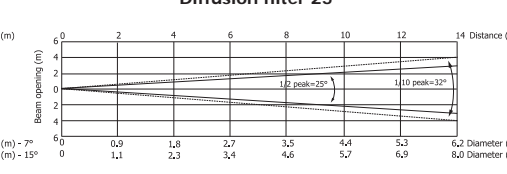
Individual control of LED zones.



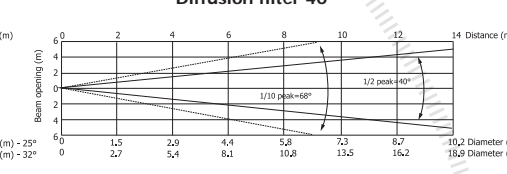
Beam angle 7°



Diffusion filter 25°



Diffusion filter 40°

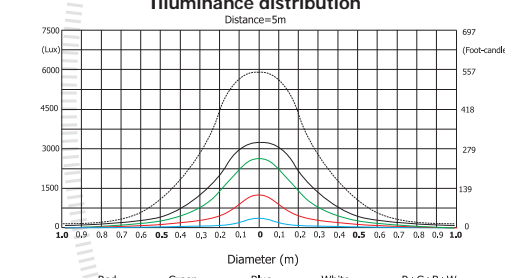


Distance (m)	2	4	5	6	8	10	12	14
Red	7125/662	1781/166	1140/126	792/74	445/41	285/27	198/18	145/14
Green	1518/141	379/753	242/226	168/157	94/88	60/56	42/39	31/29
Blue	309/181	80/47	52/29	32/18	22/12	15/7	10/5	7/4
White	301/181	75/142	52/92	32/56	22/38	15/24	10/17	7/12
R+G+B+W	3728/346	913/863	590/554	413/385	238/216	149/138	103/96	70/71

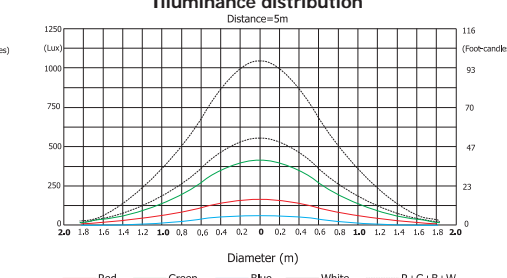
Distance (m)	2	4	5	6	8	10	12	14
Red	99/84	227/21	145/14	101/9	57/5	36/4	25/21	19/17
Green	281/212	57/253	365/24	25/24	14/13	9/9	6/6	4/4
Blue	21/22	8/74	5/374	3/174	2/81	1/42	1/24	1/14
White	301/181	75/142	52/92	32/56	22/38	15/24	10/17	7/12
R+G+B+W	402/348	1056/154	106/99	73/68	41/49	26/25	18/17	13/13

Distance (m)	2	4	5	6	8	10	12	14
Red	219/29	5/5	3/2/3	24/3/3	14/1/3	9/0/8	6/0/6	5/0/4
Green	513/48	126/12	8/8	5/75	3/2/3	2/2	14/1/1	1/1
Blue	80/16	12/12	8/7	6/5	3/3/3	2/2/2	1/1/1	1/1
White	225/47	181/17	118/11	81/8	4/4	2/2/2	1/1/1	1/1/1
R+G+B+W	1438/133	359/33	230/21	140/15	90/8	5/5	4/4	3/3/7

Illuminance distribution



Illuminance distribution



Illuminance distribution

