

### SPECIFICATIONS

|   |   |
|---|---|
| <b>Loudspeaker Type:</b>                    | 2-way, full-range   |
| <b>Operating Range:</b>                     | 65 Hz to 18 kHz<br>80 Hz to 16 kHz (±4 dB)  |
| <b>Max Input Ratings:</b>                   | 60W continuous, 120W program<br>22 volts RMS, 44 volts momentary peak                               |
| <b>Wattage Tap Selections (I/O8T only):</b> | Transformer taps with 70V/100V option<br>40 / 20 watts @ 100V<br>40 / 20 / 10 watts @ 70V           |
| <b>Recommended Power Amplifier:</b>         | 100W to 140W @ 8 ohms   |
| <b>Sensitivity (1W/1m):</b>                 | 87 dB SPL (100 Hz to 16000 Hz 1/3 octave bands)<br>87 dB SPL (250 Hz to 4 kHz speech range)         |
| <b>Maximum Output:</b>                      | 105 dB SPL / 111 dB SPL (peak)  |
| <b>Nominal Impedance:</b>                   | 8 ohms  |
| <b>Minimum Impedance:</b>                   | 6.8 ohms @ 10.90 kHz  |
| <b>Nominal -6dB Beamwidth:</b>              | 90°H (+8° / -30°, 2 kHz to 16 kHz)<br>50°V (+35° / -5°, 2 kHz to 16 kHz)                            |
| <b>Axial Q / DI:</b>                        | 12.7 / 11, 2 kHz to 16 kHz  |
| <b>Crossover Frequency:</b>                 | 2 kHz   |
| <b>Recommended Signal Processing:</b>       | 70 Hz high pass filter  |
| <b>Drivers:</b>                             | LF (1) 8"<br>HF (1) 1/2"  |
| <b>Input Connection:</b>                    | Binding post inputs   |
| <b>Controls:</b>                            | 4 position switch (I/O8T only)  |
| <b>Enclosure:</b>                           | High-impact polypropylene   |
| <b>Finish:</b>                              | Black or white  |
| <b>Mounting/Rigging Provisions:</b>         | (2) mounting points for use with included Infin-A-Ball mounting system;<br>(1) Picture hanger style |
| <b>Grille:</b>                              | Powdercoated steel, black or white  |
| <b>Supplied Accessories:</b>                | (1) Infin-A-Ball mounting bracket   |
| <b>Dimensions—Height:</b>                   | 17.717 inches / 450 mm  |
| <b>Width:</b>                               | 10.433 inches / 265 mm  |
| <b>Depth:</b>                               | 10.236 inches / 260 mm  |
| <b>Weight:</b>                              | I/O8 — 14.06 lbs (6.37 kg)<br>I/O8T — 16.32 lbs (7.4 kg)  |
| <b>Shipping Weight (In Pairs):</b>          | I/O8 — 38.82 lbs (15.9 kg)<br>I/O8T — 43.34 lbs (19.66 kg)  |

#### NOTES:

- Sensitivity: Free field pink noise measurement at 10 ft (3 m) at 50% power; extrapolated to 1 meter and an input of 2.83 volts RMS.
- Watts: All wattage figures are calculated using the rated nominal impedance.



### APPLICATIONS

- Swimming pools
- Sports stadia
- Houses of worship
- Sports facilities and health clubs
- Cruise ships
- Schools
- Corporate training rooms

### FEATURES

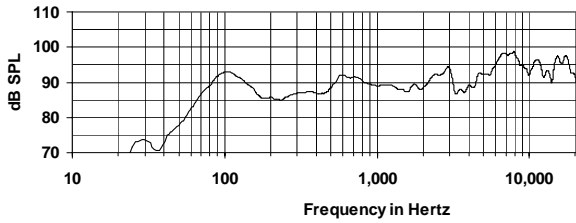
- Compact injection molded cabinet
- 90 x 50 dispersion
- Binding post inputs for easy and secure terminations
- Polypropylene LF cones for all-weather use
- Powdercoated steel grille
- Suitable for indoor and indirect outdoor applications of all types
- Infin-A-Ball mounting bracket included
- Available with or without a 70V/100V transformer
- Available in black or white finishes
- Five-year warranty

### DESCRIPTION

The I/O8 is a compact 8-inch, 2-way system which can outperform many competitive similar systems, and handles a full 120 watts of program power. The I/O8 offers high sensitivity and high power handling to allow dynamic and realistic sound reproduction over its full operating range. Available in black (I/O8B, I/O8BT) or white (I/O8W, I/O8WT). Available with or without a factory-installed 70V/100V transformer. Five year warranty.

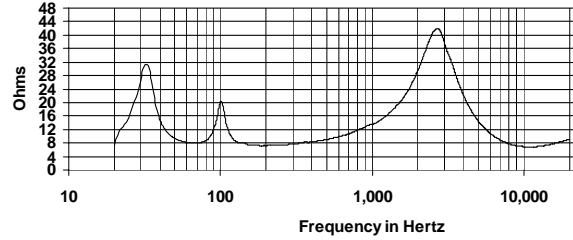
## FREQUENCY RESPONSE

Resolution <500 Hz = 10 Hz, >500 Hz = 40 Hz, 1/8 octave smoothing

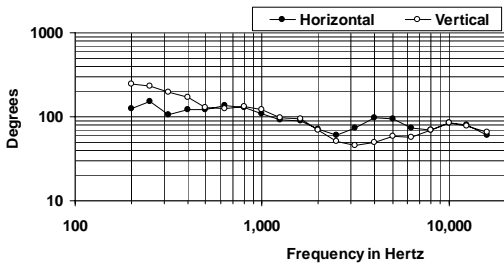


## IMPEDANCE

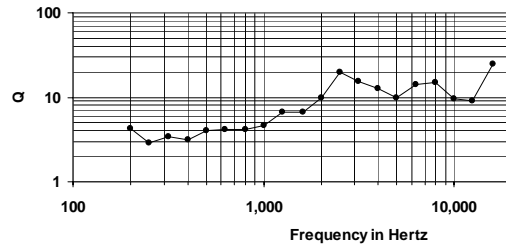
Min Z 50 Hz - 20000 Hz = 6.8 Ohms @ 10890 Hz



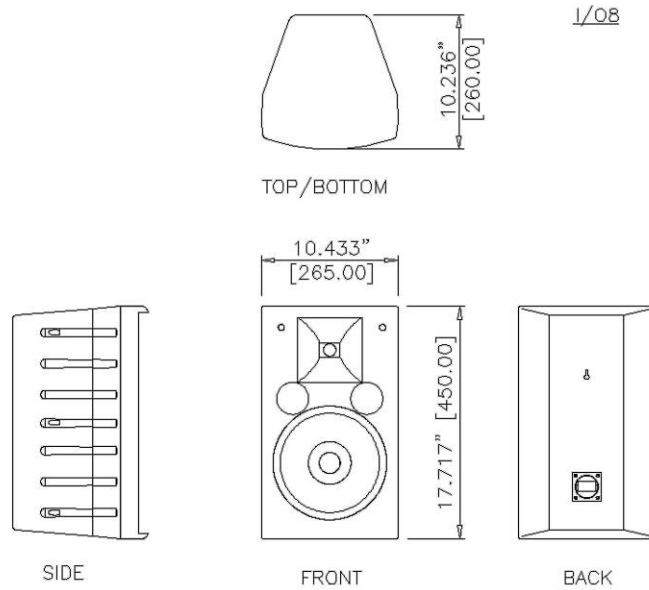
## BEAMWIDTH



## AXIAL Q



## DIMENSIONS



## TAP INSTRUCTION INPUT LABEL FOR I/O8T VERSION

