

One-Way-Array™

Suspension and Aiming for Single Cabinets

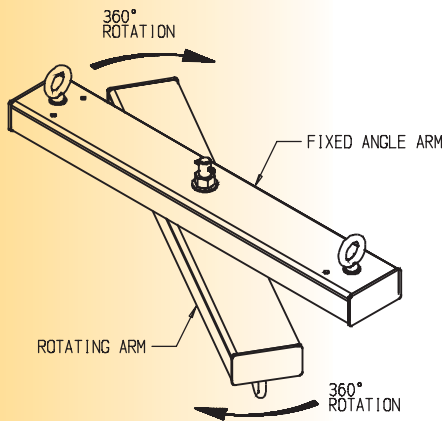
The One-Way-Array™ is an easy use load-rated and off the shelf loudspeaker rigging and aiming system for single loudspeakers. It is ideal for aiming sound in left and right of house configurations and provides spot coverage where speakers cannot be wall mounted.

The top section of the One-Way-Array rigs from two overhead suspension points. The lower section supports the loudspeaker and rotates relative to the upper section, horizontally. This gives

the installer precise horizontal aiming of sound.

For precise vertical aiming, select from a wide variety of U-Brackets or choose the Steerables® adjustable tilt cable kit system. Load rated shackles and eyebolts included in kit.

Typical venues include small to medium-sized theatres, churches, school auditoriums, gymnasiums, sport arenas, meeting halls and theme parks attractions.



SPECIFICATIONS:

- Material: Alloy structural steel tube
- Finish: Powder coat paint
- Color: Black and off-white
- Working load limit: 300 lbs/136 Kg.
- Design factor: 10:1 ratio
- Pack count: 1/carton

OPTIONAL ACCESSORIES:

1. Steerables Tilt Cable Kit controls tilt angle
2. Many standard U-Brackets to choose from
3. Adapts to most yoke mounts
4. Add-on suspension eyebolt kits

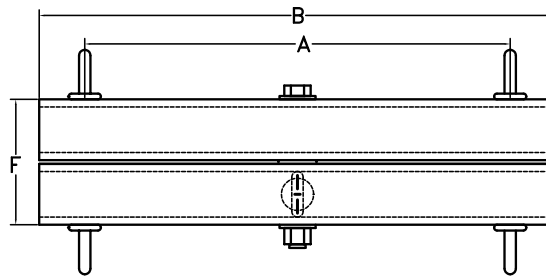
STANDARD CONFIGURATION WITH PULL BACK

- SB-10 - 10" eye to eye SB-18 - 18" eye to eye
- SB-14 - 14" eye to eye SB-24 - 24" eye to eye

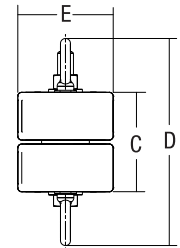
STANDARD CONFIGURATION

- SAS-1WA-20 - 18" eye to eye, 3 x 3 configurations

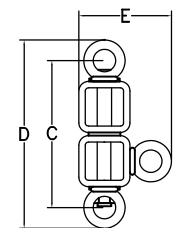
DIMENSIONS:



Front View



Standard Configuration



Standard Pull-Back Configuration

ONE-WAY-ARRAY DIMENSION TABLE

	Part Number	A	B	C	D	E	F
Standard	SAS-1WA-20	18.0"	20.0"	5.0"	5.25"	3.0"	3.0"
With Pull-Back	SB-10	10.0"	13.0"	6.0"	8.5"	4.86"	4.45"
With Pull-Back	SB-14	14.0"	17.0"	6.0"	8.5"	4.86"	4.45"
With Pull-Back	SB-18	18.0"	21.0"	6.0"	8.5"	4.86"	4.45"
With Pull-Back	SB-24	24.0"	27.0"	6.0"	8.5"	4.86"	4.45"

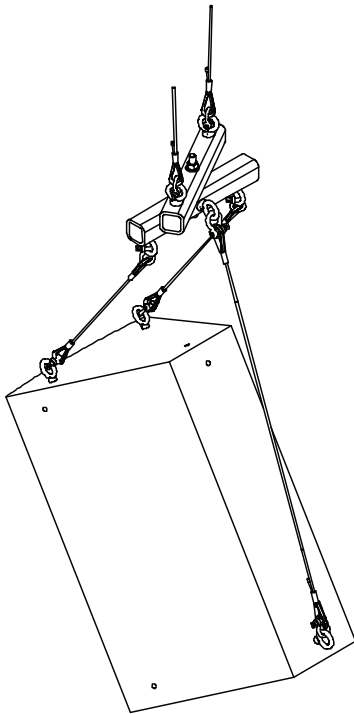


A division of:
ADAPTIVE TECHNOLOGIES GROUP
 1637 E. Burnett Street
 Signal Hill, CA 90755 USA
 PH: 562.424.2200 FX: 562.424.1127

www.atmflyware.com

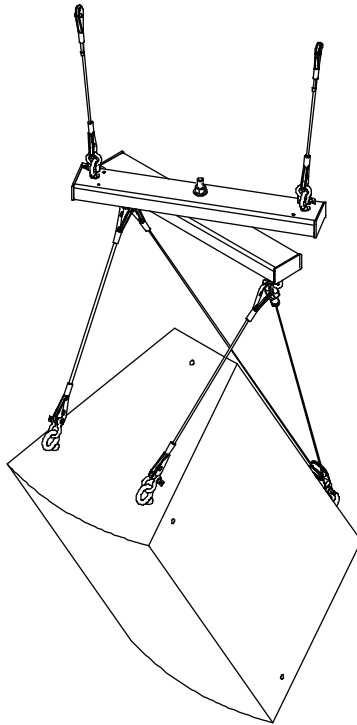
One-Way-Array™

Suspension and Aiming for Single Cabinets



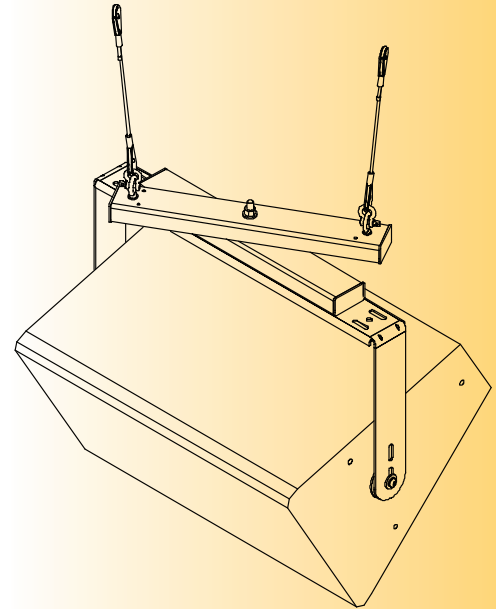
**ONE-WAY-ARRAY
WITH PULL BACK**

The SwivelBeam version of the One-Way-Array offers permanent eye fittings and a rear extended eye fitting for use as a pull back. The top of loudspeakers are primarily suspended under the lower eye fittings with two wire rope assemblies and a third wire rope is attached between a back point of the loudspeaker and the extended eye fitting, tilting the loudspeaker downward.



**ONE-WAY-ARRAY
WITH TILT CABLE KIT**

One-Way-Array's standard configuration comes with eyebolts that secure to the upper and lower rotating arms. The entire assembly suspends from the upper eyebolts and the Steerables Tilt Cable Kit attaches to the lower eyebolts. Cable kits come in five different lengths to accommodate different down angles. The selected loudspeaker suspends from the cable kit and can be adjusted into any down angle.



**ONE-WAY-ARRAY
WITH U-BRACKET**

One-Way-Array's standard configuration comes with pre set holes in the lower rotating arm to accommodate standard Allen U-Bracket mounts. To install, simply remove the center bolt, attach the selected U-Bracket using included hardware then reassemble the center bolt. Attach the loudspeaker in between the U-Bracket and tilt into position.



A division of:
ADAPTIVE TECHNOLOGIES GROUP

1637 E. Burnett Street
Signal Hill, CA 90755 USA
PH: 562.424.2200 FX: 562.424.1127

www.atmflyware.com

WARNING: Mounting and/or suspension loudspeakers requires experienced professionals. Improperly installed loudspeakers can result in property damage, personal injury and/or liability to the installing contractor.



MADE IN THE USA

ALWAYS USE SAFETY CABLES.