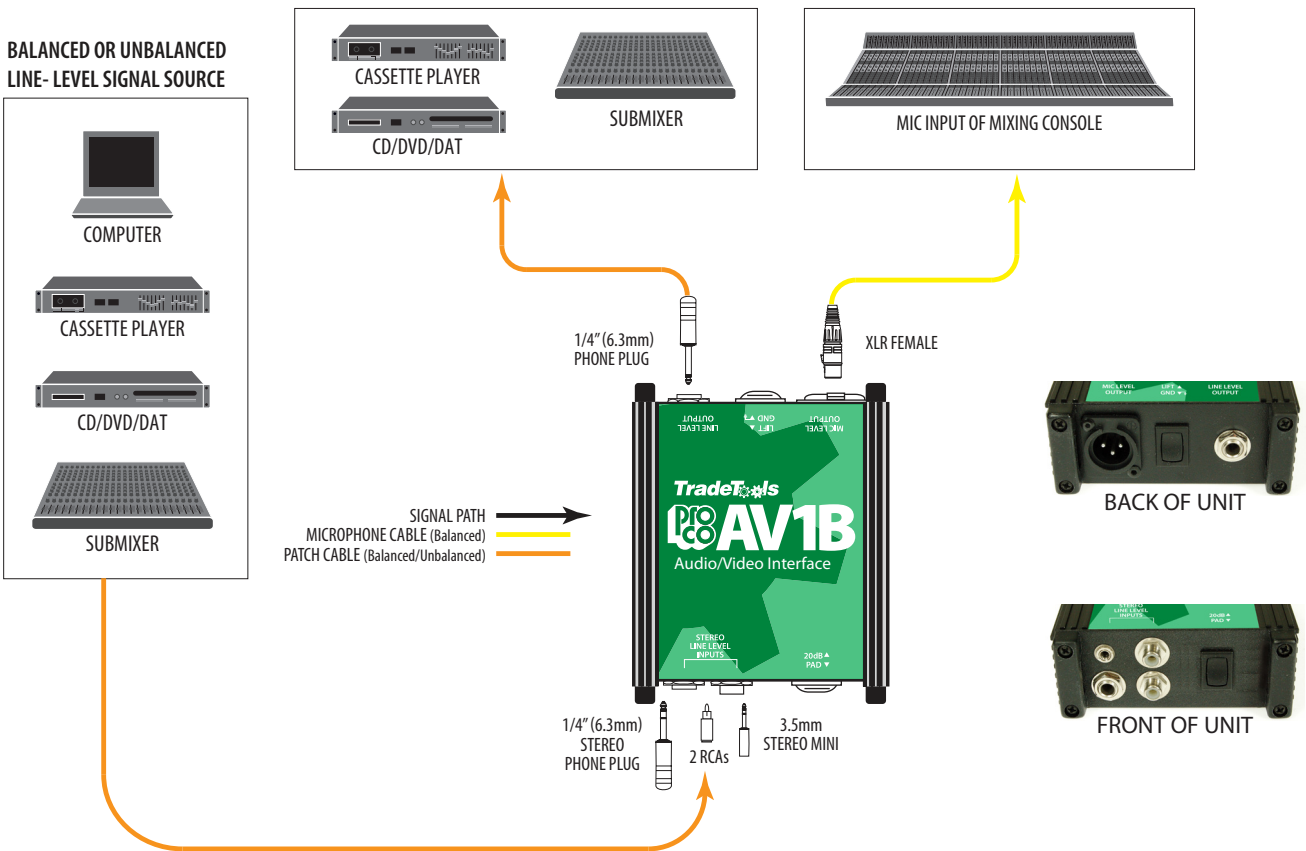


APPLICATION INFORMATION



CONTROLS:

STEREO & LINE LEVEL INPUTS:

All inputs are parallel and resistively mixed to monaural. 1/4" 3-conductor phone jack accepts signals from balanced or unbalanced line-level sources such as audio and video tape recorders. Two RCA phono jacks and one stereo mini jack, for signals from nominal -10 dBV sources such as radio, cassette, computer or DVD outputs. Input impedance: approx. 4 kohm.

MIC LEVEL OUTPUT:

3-pin XLR-type connector provides floating transformer-isolated low-impedance output to feed suitable mixer or PA amplifier input. Recommended load impedance: 1.0 kohm.

LINE OUTPUT:

1/4" (6.3mm) phone jack takes signal after PAD ("up" position = pad "in") switch and provides unbalanced line-level source to feed suitable inputs of tape recorders, CDs, DVDs, sound systems, etc. Recommended load impedance: 100 kohm.

GND/LIFT:

Ground-lift switch used to reduce hum and buzz by eliminating ground loops and providing proper grounding for various conditions. Breaks connection between input and output shields.

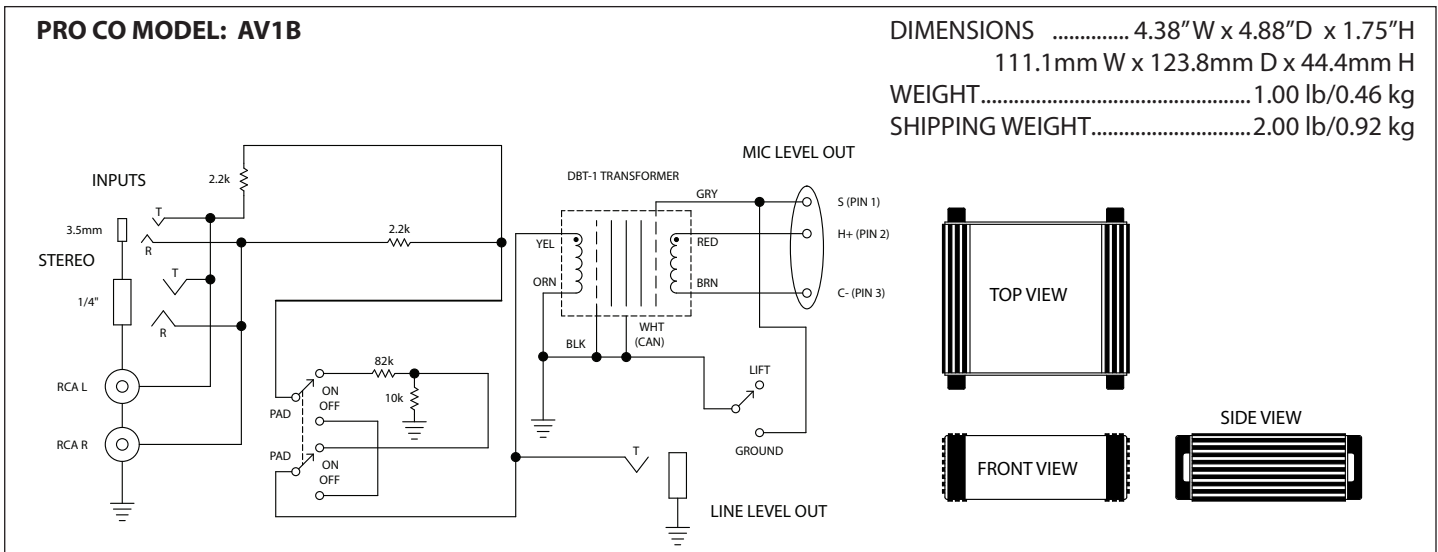
20dB PAD:

Activating the switch (switch in the up position) will attenuate the input signal by @20dB. Deactivating the switch (switch in the down position) removes the attenuation.

NOTES:

1. Line In level is nominally -10dBV (300 mV). Use of two jacks for resistive mixing of two low impedance sources will cause 6 dB of signal loss (In addition to the transformer step-down/insertion loss).
2. Ground lift (GND/LIFT) is typically used when connecting sources with 3-wire grounded AC line cords, assuming that the PA system is properly grounded. For safety reasons all equipment with 3-wire AC line cords should be connected to properly grounded receptacles. Note that GND/LIFT switch does not affect LINE OUTPUT as it is an independent circuit.

CIRCUIT DIAGRAM:



Other TradeTools™ Products from Pro Co

- AVP1B Wallplate Format Audio/Video Interface Unit
- AVP1VB Wallplate Format Audio/Video Interface Unit with Input Level Control
- CB-1 Direct Box
- DB1 Professional Direct Box
- DB2 Professional Stereo Direct Box
- DB4A Rackmount Quad Direct Box
- DBA1 Professional Active Direct Box
- HJ4P Professional Stereo headphone Junction Box
- HJ6 Headphone Junction Box
- iFace Portable Audio Player Interface
- iGate Universal Audio Gateway
- iPlate Wallplate Format Portable Audio Player Interface
- iRack Rackmount Portable Audio Player Interface
- IT1 Isolation Transformer Unit
- IT4A Rackmount Quad Isolation Transformer Unit
- IT8A Rackmount 8-ch. Isolation Transformer Unit
- LS82 Rackmount 8-ch. 1:2 Line Level Splitter

- MC2 Microphone Combiner
- MS2 1:2 Microphone Splitter
- MS3 1:3 Microphone Splitter
- MS42A Rackmount Quad 1:2 Microphone Splitter
- MS43A Rackmount Quad 1:3 Microphone Splitter
- MS82 Rackmount 8-ch. 1:2 Microphone Splitter
- MS82P Rackmount 8-ch. 1:2 Phantom Power Microphone Splitter
- MS83 Rackmount 8-ch. 1:3 Microphone Splitter
- MS83P Rackmount 8-ch. 1:3 Phantom Power Microphone Splitter
- Panic Button Microphone A/B Switch
- Power Mute Selectable Microphone Muting Switch
- Short Stop Microphone Muting Switch, Momentary
- Sign Off Microphone Muting Switch, Latching
- SAS1 Sports Announcer's Switch (Press-to-Talk)
- SAS2 Sports Announcer's Switch with 6" Gooseneck
- SAS3 Sports Announcer's Switch with wired 6" Gooseneck

... plus our full line of audio cabling, snakes!



Pro Co Sound
 225 Parsons Street | Kalamazoo, MI 49007
 800-253-7360

» www.procosound.com