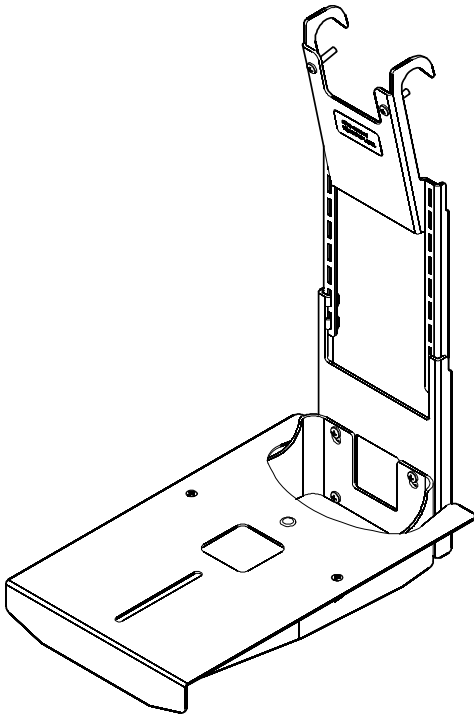
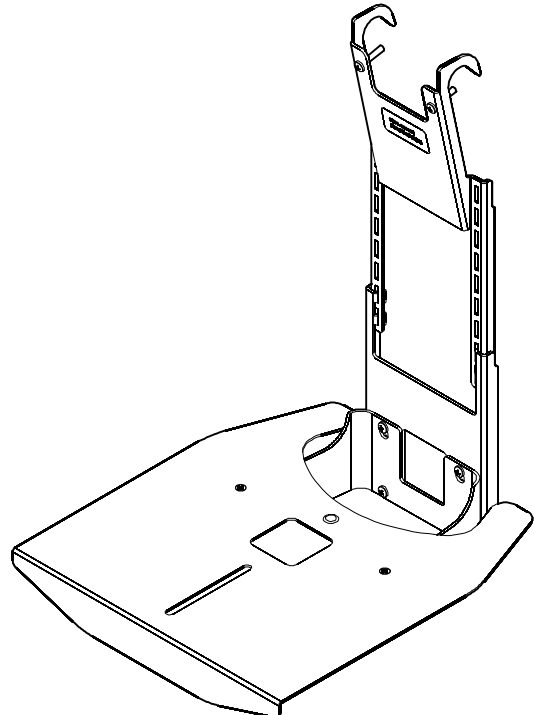

INSTALLATION INSTRUCTIONS



FVS100



FVS150

Lower Video Conference Camera Shelf

DISCLAIMER

Milestone AV Technologies and its affiliated corporations and subsidiaries (collectively "Milestone"), intend to make this manual accurate and complete. However, Milestone makes no claim that the information contained herein covers all details, conditions or variations, nor does it provide for every possible contingency in connection with the installation or use of this product. The information contained in this document is subject to change without notice or obligation of any kind. Milestone makes no representation of warranty, expressed or implied, regarding the information contained herein. Milestone assumes no responsibility for accuracy, completeness or sufficiency of the information contained in this document.

Chief® is a registered trademark of Milestone AV Technologies. All rights reserved.



IMPORTANT WARNINGS AND CAUTIONS!



WARNING: A WARNING alerts you to the possibility of serious injury or death if you do not follow the instructions.



CAUTION: A CAUTION alerts you to the possibility of damage or destruction of equipment if you do not follow the corresponding instructions.



WARNING: Failure to read, thoroughly understand, and follow all instructions can result in serious personal injury, damage to equipment, or voiding of factory warranty! It is the installer's responsibility to make sure all components are properly assembled and installed using the instructions provided.



WARNING: Failure to provide adequate structural strength for this component can result in serious personal injury or damage to equipment! It is the installer's responsibility to make sure the structure to which this component is attached can support five times the combined weight of all equipment. Reinforce the structure as required before installing the component.



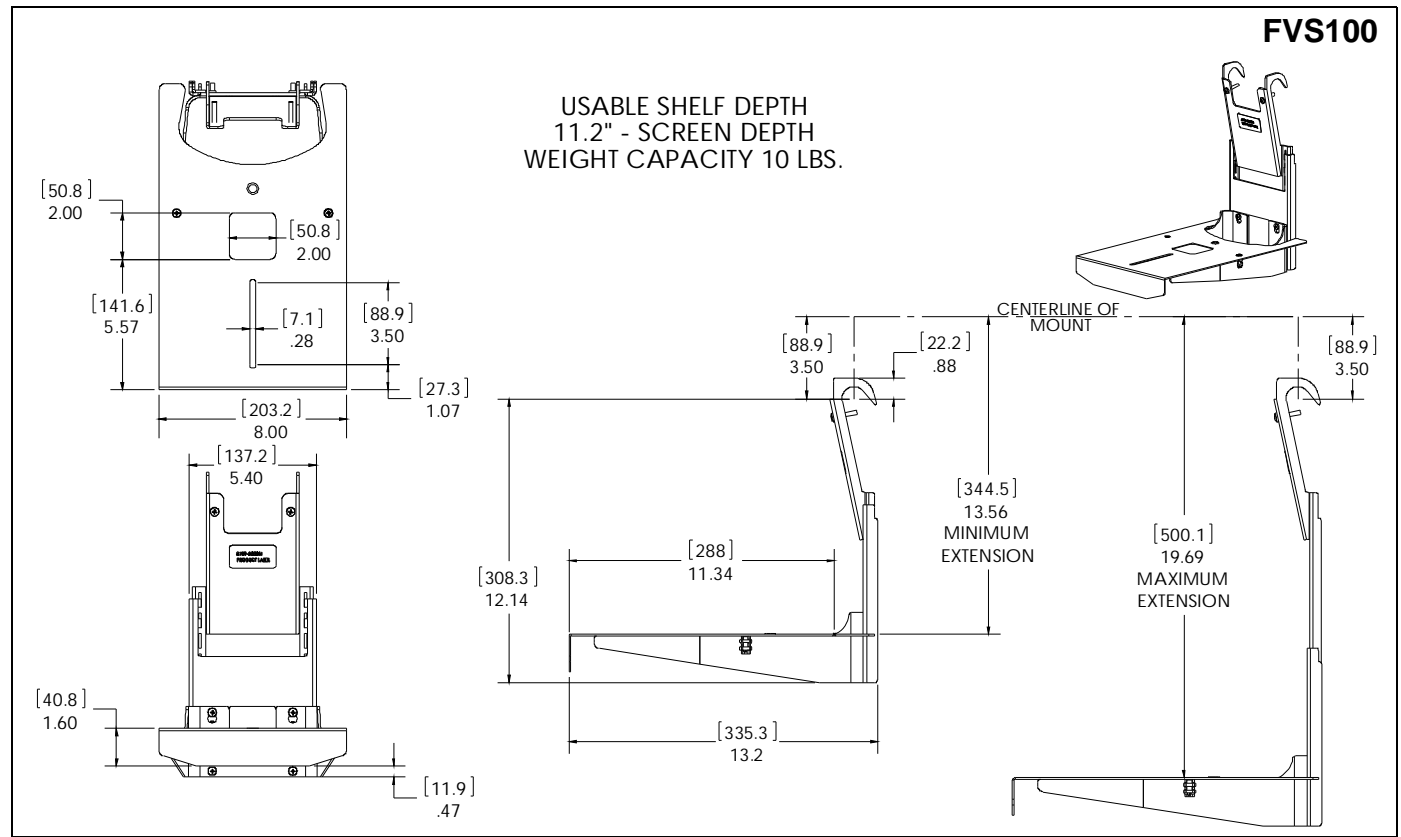
WARNING: Exceeding the weight capacity can result in serious personal injury or damage to equipment! It is the installer's responsibility to make sure the combined weight of all components located on the FVS100/FVS150 does not exceed 10 lbs (4.5 kg).

LEGEND

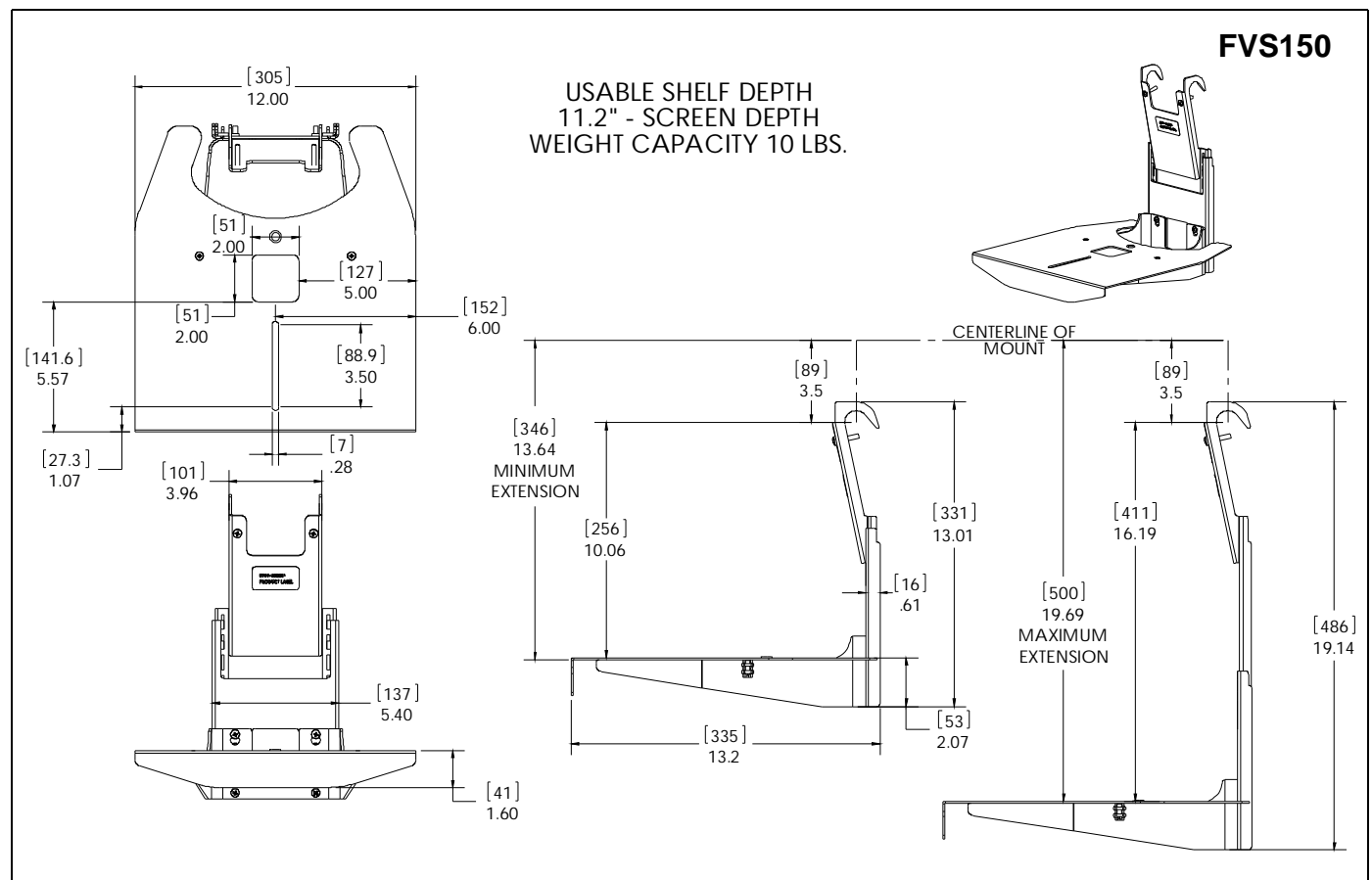
	Tighten Fastener Apretar elemento de fijación Befestigungsteil festziehen Apertar fixador Serrare il fissaggio Bevestiging vastdraaien Serrez les fixations		Pencil Mark Marcar con lápiz Stiftmarkierung Marcar com lápis Segno a matita Potloodmerkteken Marquage au crayon
	Loosen Fastener Aflojar elemento de fijación Befestigungsteil lösen Desapertar fixador Allentare il fissaggio Bevestiging losdraaien Desserrez les fixations		Phillips Screwdriver Destornillador Phillips Kreuzschlitzschraubendreher Chave de fendas Phillips Cacciavite a stella Kruiskopschroevendraaier Tournevis à pointe cruciforme

DIMENSIONS

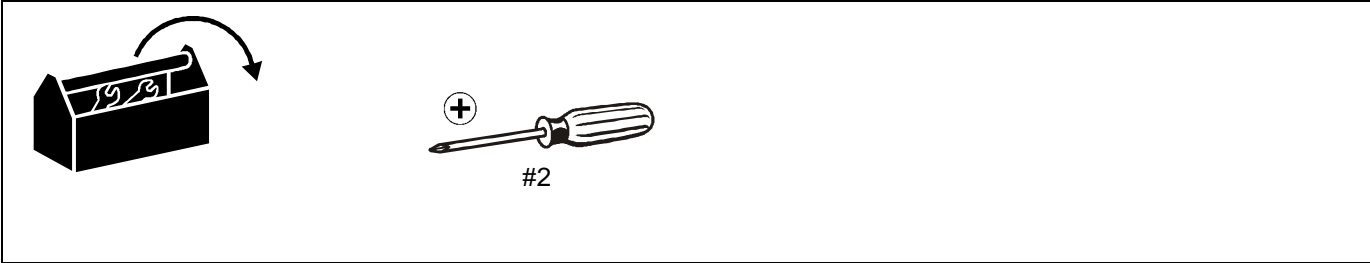
FVS100



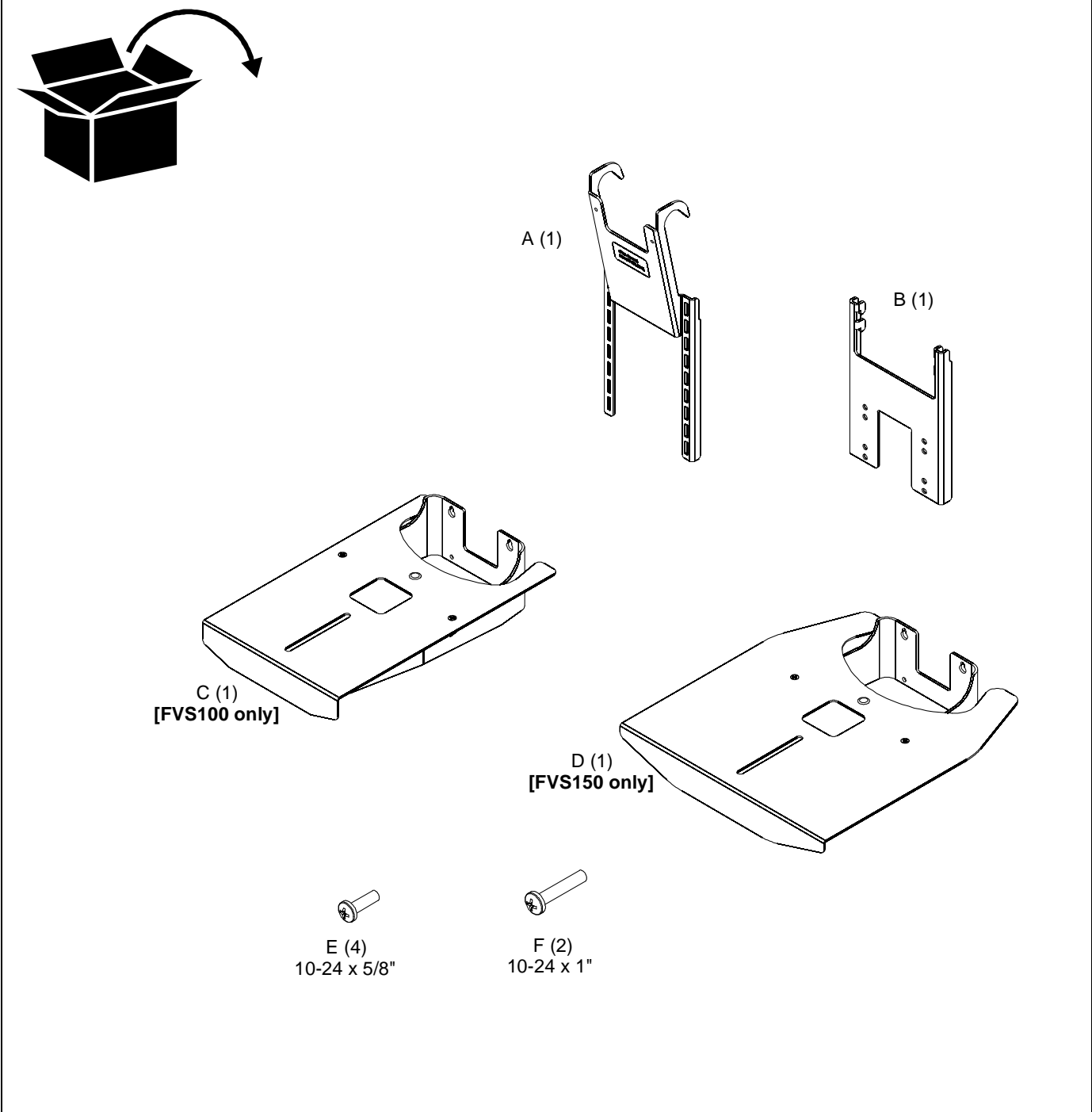
FVS150



TOOLS REQUIRED FOR INSTALLATION



PARTS



Assembly and Installation

Assembling Shelf and Brackets

1. Attach lower shelf (C or D) to hanger bracket (B) using four 10-24 x 5/8" Phillips pan head screws (E). (See Figure 1)

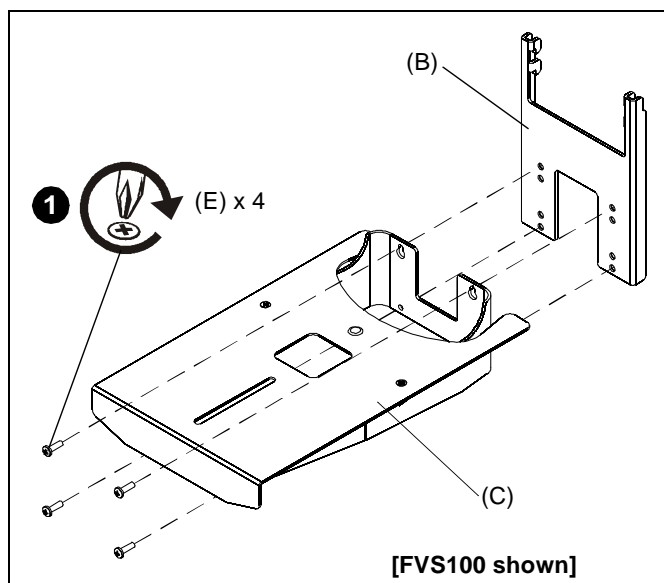


Figure 1

Attaching to Wall Mount

NOTE: The FVS100/FVS150 may be attached to the wall mount with the display already in place, or with the display removed. Proceed to either **Installing to Wall Mount with Display Attached** or **Installing to Wall Mount with Display Removed** section.

Installing to Wall Mount with Display Attached

1. Pull out bottom of display.
2. From below and behind the display, raise and hang hook bracket (A) onto lower wall mount rail. (See Figure 2)

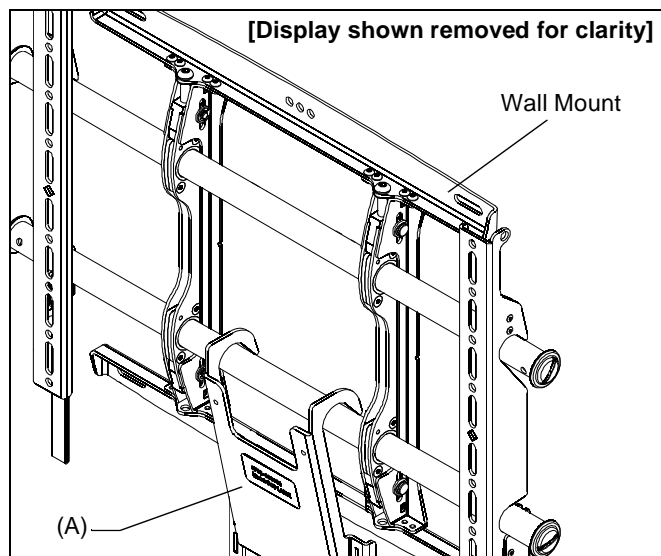


Figure 2

3. Hang shelf with hanger bracket onto the hook bracket (A). (See Figure 3)

NOTE: The shelf with hanger bracket may be adjusted up or down on the hook bracket (A) in 7/8" increments for a total height adjustment of up to 6.05".

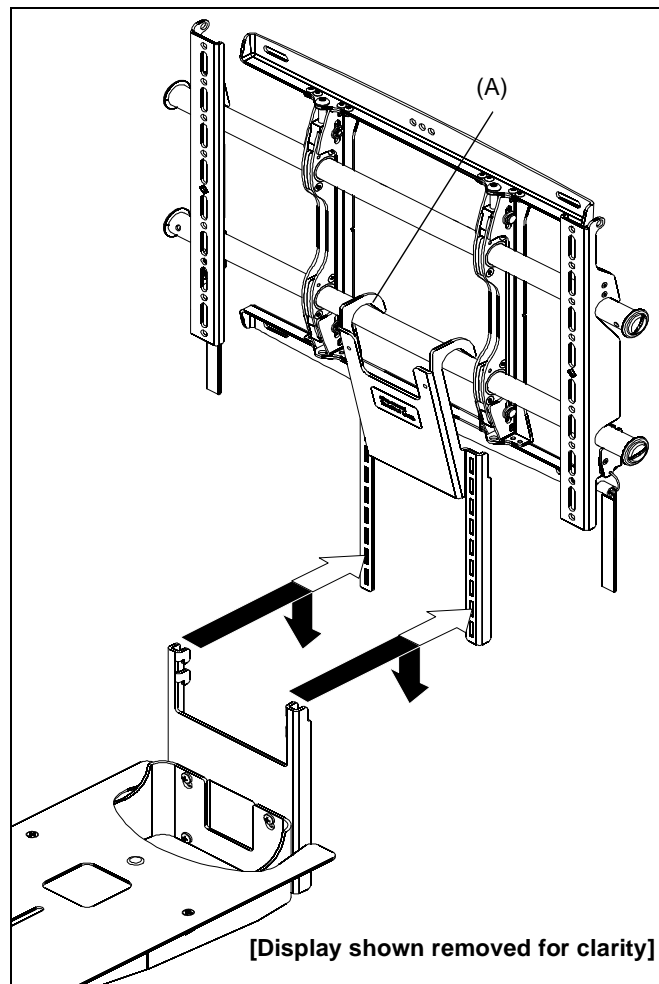


Figure 3

NOTE: Proceed to **Installing Camera** section.

Installing to Wall Mount with Display Removed

NOTE: Installing the FVS100/FVS150 to a wall mount where a display has been removed allows use of security screws to prevent the FVS100/FVS150 from being removed.

1. Hang shelf with hanger bracket onto the hook bracket (A). (See Figure 4)

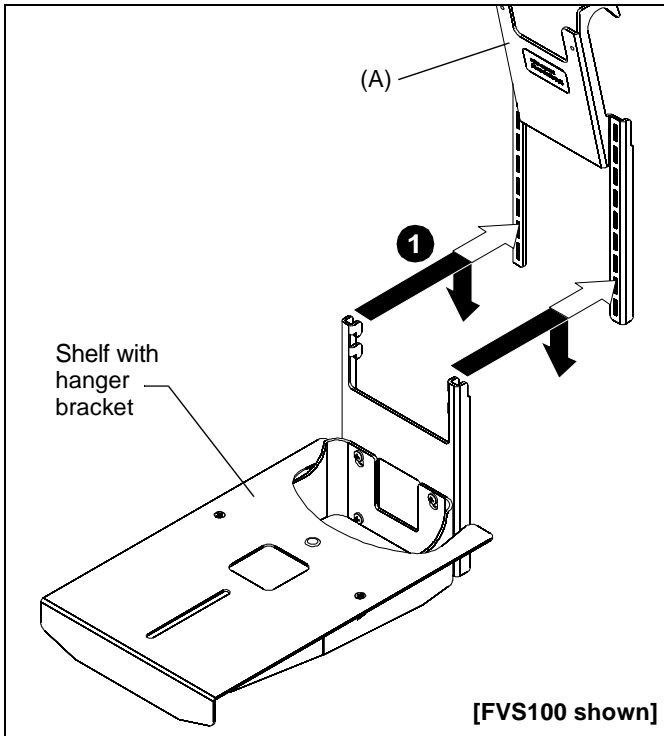


Figure 4

NOTE: The shelf with hanger bracket may be adjusted up or down on the hook bracket (A) in 7/8" increments for a total height adjustment of up to 6.05".

2. Remove display if already attached to wall mount following instructions included with the wall mount.
3. Hang FVS100/FVS150 on lower wall mount rail.
4. Adjust location and secure to wall mount rail using two 10-24 x 1" Phillips pan head screws (F). (See Figure 5)

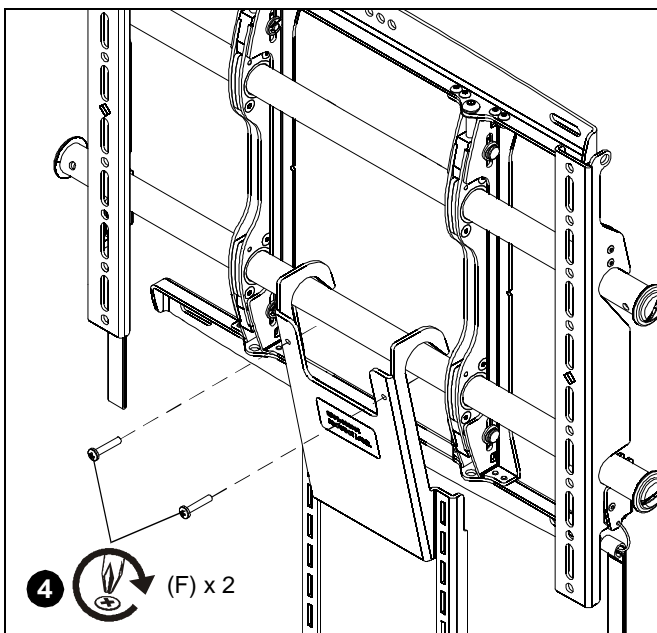


Figure 5

5. Hang display on wall mount following installation instructions included with the wall mounts.

Installing Camera

1. Install camera to shelf.

NOTE: If camera has a bottom mounting screw, attach it through the mounting slot in the shelf. (See Figure 6)

2. Route cable from camera. (See Figure 6)

NOTE: Cable may be routed using the cable clip on the underside of the shelf. Secure the cable at the cable clip with a wire tie (not included). (See Figure 6)

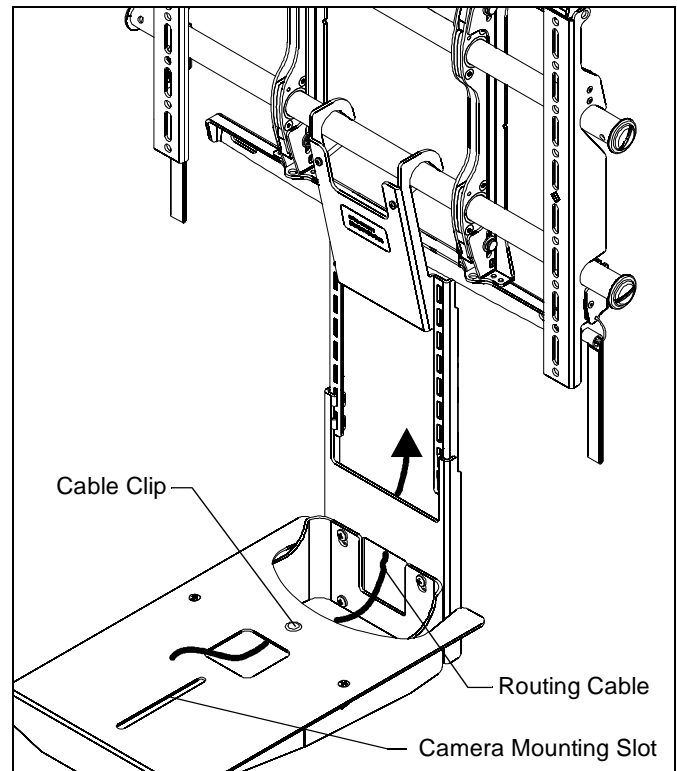


Figure 6



Our Mounts. **Your Vision.**

Chief Manufacturing, a products division
of Milestone AV Technologies

8807-000081 Rev01
©2009 Milestone AV Technologies,
a Duchossois Group Company
www.chiefmfg.com
01/09

USA/International	A 8401 Eagle Creek Parkway, Savage, MN 55378 P 800.582.6480 / 952.894.6280 F 877.894.6918 / 952.894.6918
Europe	A Fellenoord 130 5611 ZB EINDHOVEN, The Netherlands P +31 (0)40 2668620 F +31 (0)40 2668615
Asia Pacific	A Room 24F, Block D, Lily YinDu International Building LuoGang, BuJi Town, Shenzhen, CHINA. 深圳市布吉罗岗村百合银都国际大厦D栋24F P +86-755-8996 9226 F +86-755-8996 9217

