



Date: \_\_\_\_\_ Type: \_\_\_\_\_

Firm Name: \_\_\_\_\_

Project: \_\_\_\_\_

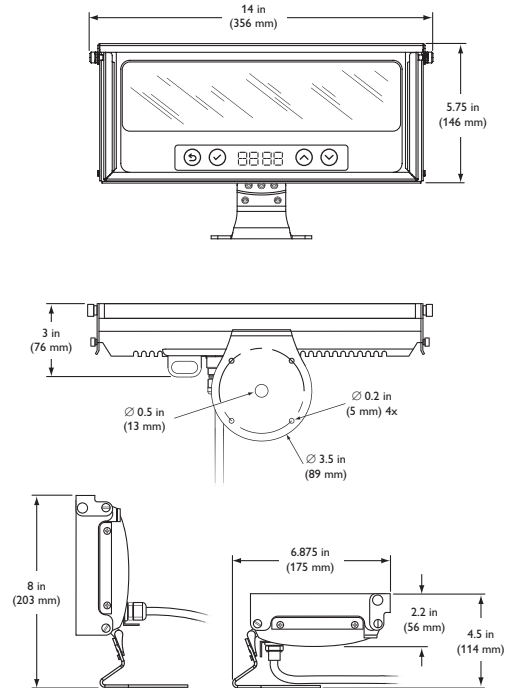
# ColorBlast TRX

## 10° Beam Angle

Theatrical RGBAW LED wash light with expanded color range

ColorBlast® TRX is a fully-featured RGBAW LED wash/flood/spotlight, offering a significantly enhanced color range, light output of up to 1577 lumens, and onboard addressing and configuration features for ease of use and control. Ideal for theatrical and rental distributors, exhibition houses, theaters, nightclubs, and other entertainment venues, rugged ColorBlast TRX fixtures are designed to withstand the rigors of demanding stage, set, and touring environments.

- Expanded color palette — Amber and neutral white LEDs seamlessly blend with red, green, and blue LEDs to produce a significantly expanded color palette, including intense yellows, high-quality whites, and a range of subtle pastel colors.
- Flexible color control — Color control modes include five-channel RGBAW in/out, three-channel RGB in/out, and three-channel RGB in mapped to five-channel RGBAW out for consistent operation with other RGB LED fixtures, such as ColorBlast TR.
- Full range of features — Operates in DMX or fixed-color mode. 16-bit resolution supports smooth dimming and precise color control. Adjustable dimming curves and LED transition speeds emulate the behavior of other Philips Color Kinetics fixtures and conventional theatrical fixtures with DMX dimming.
- On-board controls — Touch-sensitive menus offer direct access to addressing and other functions. Fixture self-test visually confirms proper operation of fixtures, while diagnostics display information such as serial number, operating temperature, and input voltage.
- Pivoting bezel and exchangeable lenses — The pivoting bezel and included 23° soft-focus and 10° clear tempered glass spread lenses let you switch quickly between soft-edge wash lighting and extended beam projection.
- Quick fixture aiming and locking — An industrial-grade constant torque hinge offers stable, 110° fixture tilting for quick and dependable aiming.
- Versatile mounting options — A pre-assembled mounting base accommodates truss clamps and other mounting options. Built-in 6 ft (1.8 m) power cables can be extended up to 175 ft (53.3 m) with standard color scroller cables.
- Accessories and additional spread lenses — Top hats, half top hats, barndoors, egg crate louvers, and spread lenses from City Theatrical Inc., slip into the included accessory holder. Captive thumbscrews secure accessories when fixture is hung upside down.
- Industry-standard control — Works seamlessly with the full range of Philips DMX controllers, such as iPlayer 3, or any third-party DMX controller. City Theatrical Inc. offers a line of advanced power / data supplies designed for use with ColorBlast TRX fixtures.



For detailed product information, please refer to the ColorBlast TRX Product Guide at [www.colorkinetics.com/ls/rgb/colorblasttrx/](http://www.colorkinetics.com/ls/rgb/colorblasttrx/)

# PHILIPS

## Specifications

Due to continuous improvements and innovations, specifications may change without notice.

Item	Specification	10° Beam Angle
Output	Lumens†	1577
	Lumen Maintenance‡	100,000 hours L50 @ 25° C 80,000 hours L50 @ 50° C
Electrical	Input Voltage	24VDC
	Power Consumption	50 W maximum at full output, steady state
Control	Interface	DMX via PDS-750 TRX, PDS-750 TR, PDS-375 TR, PDS-150e, or PDS-60 24V. Addressable 8- or 16-bit control, RGBAW or RGB modes.
	Control System	Philips full range of controllers, including Light System Manager and iPlayer 3, or third-party controllers
Physical	Dimensions (Height x Width x Depth)	8 x 14 x 3 in (203 x 356 x 76 mm)
	Weight	7.25 lb (3.3 kg)
	Housing	Die-cast aluminium, powder-coated black finish
	Lens	Clear glass
	Fixture Connections	6 ft (1.8 m) power / data cable with 4-pin XLR connector
	Temperature Ranges	-40° – 122° F (-40° – 50° C) Operating -4° – 122° F (-20° – 50° C) Startup -40° – 176° F (-40° – 80° C) Storage
	Humidity	0 – 95%, non-condensing
	Maximum Cable Length	175 ft (53.3 m), with extension to built-in 6 ft (1.8 m) power cable
Certification and Safety	Certification	UL / cUL, FCC Class A, CE
	LED Class	Class 2 LED product
	Environment	Dry / Damp Location, IP22

† Lumen measurement complies with IES LM-79-08 testing procedures



‡ L50 = 50% maintenance of lumen output (when light output drops below 50% of initial output). Ambient temperatures specified. Based on measurements that comply with IES LM-80-08 testing procedures. See [www.colorkinetics.com/support/appnotes/lm-80-08.pdf](http://www.colorkinetics.com/support/appnotes/lm-80-08.pdf) for more information.

CHROMACORE<sup>®</sup> CK TECHNOLOGY | OPTIBIN<sup>®</sup> CK TECHNOLOGY

## Fixtures, Power Supplies and Accessories

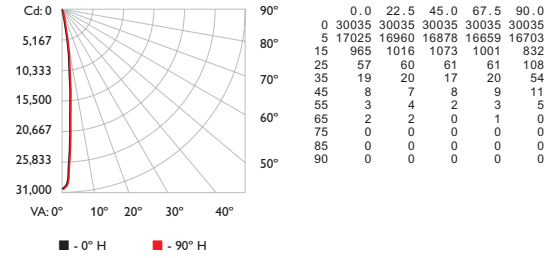
Item	Item Number	Philips 12NC
ColorBlast TRX	116-000029-00	910503701652
PDS-750 TRX	Call for Availability	—
PDS-750 TR	109-000019-00	910503700102
PDS-150e	109-000008-01	910503700092
PDS-60 24V (DMX / Ethernet)	109-000017-03	910503700097
Blast TR Demo Case Cable, 5 ft (1.5 m)	110-000016-00	—
XLR-to-RJ45 Adapter Cable	104-000005-00	910503700061
Half Top Hats	Black 120-000009-04	—
Top Hats	Black 120-000005-04	—
Egg Crate Louvers	Black 120-000015-04	—
Barndoors	Black 120-000019-04	—
Horizontal Spread Lens	36 / 50° 120-000025-00	—
Horizontal / Vertical Spread Lens	40° / 40° 120-000025-01	—

Use Item Number when ordering in North America.

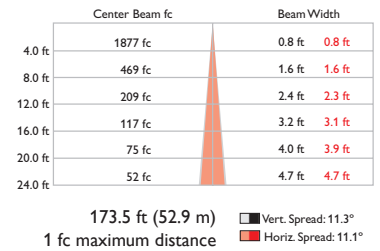
## Photometrics

### 10° clear lens

#### Polar Candela Distribution



#### Illuminance at Distance



LED	Lumens	Efficacy
RGB	1577	27.0

For lux multiply fc by 10.7



Philips Color Kinetics  
3 Burlington Woods Drive  
Burlington, Massachusetts 01803 USA  
Tel 888.385.5742  
Tel 617.423.9999  
Fax 617.423.9998  
[www.colorkinetics.com](http://www.colorkinetics.com)

Copyright © 2010 Philips Solid-State Lighting Solutions, Inc. All rights reserved.  
Chromacore, Chromasic, CK, the CK logo, Color Kinetics, the Color Kinetics logo, ColorBlast, ColorBlaze, ColorBurst, ColorGraze, ColorPlay, ColorReach, iW Reach, eW Reach, DIMand, EssentialWhite, eW, iColor, iColor Cove, IntelliWhite, iW, iPlayer, Optibin, and Powercore are either registered trademarks or trademarks of Philips Solid-State Lighting Solutions, Inc. in the United States and / or other countries. All other brand or product names are trademarks or registered trademarks of their respective owners. Due to continuous improvements and innovations, specifications may change without notice.

DAS-000075-01 R00 07-10