

Integrator Series Zone Mix | 760

Sales Tip Sheet

The Integrator Series Zone Mix 760 is a complete paging and music management solution designed to save you time and money. Built upon proven and reliable technology, it is perfect for restaurants, hospitality, night clubs and more. The Zone Mix 760 combines a level of quality, polish and features never before seen at such a competitive price. The beautiful Graphic User Interface provides a familiar

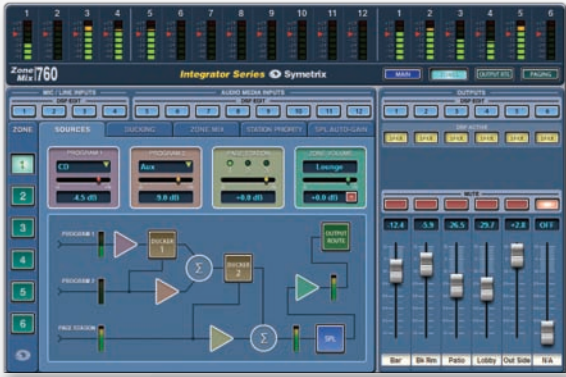
hardware-like layout allowing for a low learning curve and quick use. From elegant remote controls to a simple 3rd party control protocol, the Zone Mix 760 is all about integration. It provides a level of comfort and security often overlooked with life safety system support for emergency announcement routing or system muting. The Zone Mix 760 is your total solution; Engineered by Symetrix.

Paging and Music Management Zone Mixer for:

1. Restaurants
2. Sports Bars
3. Fitness Clubs
4. Night Clubs
5. Hotels
6. Retail Locations
7. Casinos
8. Museums
9. Exhibition Halls
10. Office Buildings
11. Themed Entertainment

Key selling features:

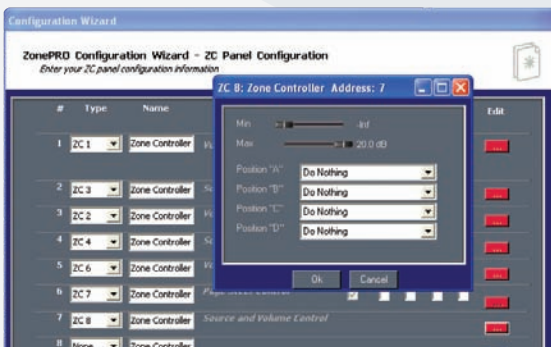
- Proven, reliable technology: Built upon the DSP technology found in SymNet, Symetrix' premium Network Audio Solution.
- Low learning curve, saves time and money: A familiar pre-configured interface with easy to use setup and configuration wizards - no design required!
- Highly versatile: 12 inputs, 6 outputs, flexible routing, and a full compliment of DSP processing make the 760 the most powerful Zone Mixer available today.
- Innovative protection: Interface with life safety systems to route emergency system paging or trigger full system muting.
- Flexible Control: Use the familiar hardware-like GUI or set up ARC wall panel remotes for control. Connect the 760 to your LAN for facility-wide management. Fully compatible with Ethernet or RS-232 based controllers such as AMX or Crestron touch panels utilizing the simple, fully documented 3rd party control protocol.
- Secure: No front panel controls to tempt unauthorized hands.



The Zone Mix 760's software application hides nothing more than two mouse clicks away from you. Zone signal flow and priority mixing is built right into the user interface (shown).



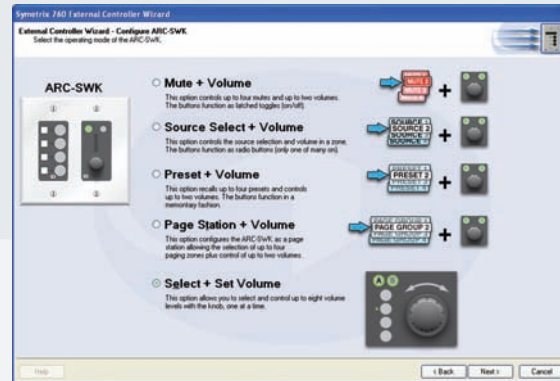
dBx Zone Pro software uses a myriad of windows several layers deep making work flow difficult to manage.



dBx Zone Pro software uses one "Configuration Wizard" to configure the Zone Pro device as well as all remotes. This requires you to step through extra screens in order to configure or modify remotes. Text-only wizards are difficult to relate with application parameters and no preview or simulation is available.

Versus the competition:

- Symetrix has the best audio quality around. The Zone Mix 760 has the lowest THD+Noise (-90 dB typical at +4 dBu, 1 kHz, 0 dB gain), higher input levels (+24 dBu mic/line; +8 dBV RCA), higher output levels (+24 dBu), and more phantom power (+20 VDC) of all the competition.
- Twice the number of microphone preamps.
- More DSP processing available including: Parametric EQ, Compressor/Limiter, and 8-band Feedback Fighter on each mic/line input, AGC for the Audio Media inputs, Ambient Noise Compensation on Zones 1 and 2, full Loudspeaker Management and Limiting for each output.
- Flexible routing; any zone can feed any number of outputs by using simple matrix connect buttons.
- Three Paging Stations with unique priorities per zone.
- Simple, elegant, easy to use software. Symetrix Integrator Series products have the most advanced GUIs in the industry; nearly all functions are two or less mouse clicks away!



The External Controller Wizard presents all of your options graphically in a linear fashion stepping you through the process of programming your remotes. Actual Zone Mix 760 software graphics are used to illustrate parameters addressed by remotes. Existing remotes can be quickly modified without stepping through the entire wizard each time. ARC Wall Panels can be simulated in software before you program actual hardware.

Engineered by **Symetrix™**

6408 216th St. SW | Mountlake Terrace, WA 98043 | USA | Tel: +1 (425) 778.7728 | Fax: +1 (425) 778.7727