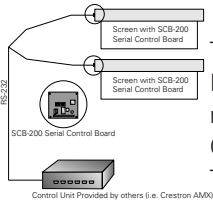


SCB-200 SCREEN CONTROLLER



The SCB-200 screen controller provides control over a screen using RS-232C communications or an optional Ethernet controller, wall controller or infrared controller. Designed for applications where precise screen control and monitoring capabilities are crucial, the SCB-200 is available as a factory installed option in the Contour®, Tensioned Contour®, Advantage®, Tensioned Advantage®, Advantage® Deluxe, Tensioned Advantage® Deluxe, Director and Tensioned Director Electrols®.

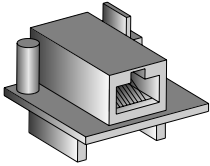
For multi-aspect ratio screens and other more sophisticated applications, multiple SCB-200 screen controllers may be daisy chained for synchronous operation, while still using a single RS-232 connection or optional controller.

The SCB-200 possesses advanced position detection capabilities, or DSPS (Da-Lite Screen Positioning System), allowing for precise screen positioning. Like a traditional electric screen controller, the SCB-200 allows the screen be positioned in the fully up or down position, but also allows for dynamic positioning. As an example, the SCB-200 allows the screen to “go to 100 inches”, “raise by 4 inches”, or “go to 5x4 aspect ratio”.

Optional Accessories:

- NET-200 Ethernet Controller
- WC-200 Wall Controller
- IR-200 Infrared Remote Control
- RM-200 Infrared Transmitter

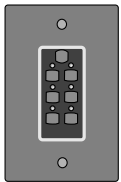
To order factory integrated SCB-200, simply add an “M” suffix to the screen part number and add \$375.00 Retail to the screen cost.



NET-200 Ethernet Controller

NET-200 ETHERNET CONTROLLER

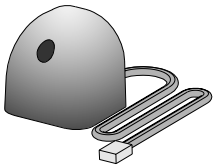
The Ethernet Controller is a snap-on daughterboard to the SCB-200 that allows a direct Ethernet connection to the SCB-200 controlled screen. This controller extends the control capabilities of the SCB-200 to almost any network enabled computer or control system in a LAN or WAN environment using standard TCP/IP protocol and an available 10Base-T or 100Base-TX Ethernet connection.



WC-200 Wall Controller

WC-200 WALL CONTROLLER

Powered from the SCB-200, the WC-200 is a Decora® style wall controller designed for simple installation and sophisticated control. Functions such as screen up, down and stop are available, as well as more advanced functionality such as preset and custom aspect ratios. The WC-200 also possesses an IR receiver for use with the RM-200 infrared remote control eliminating the need for a separate IR receiver.



IR-200 Infrared Remote Control

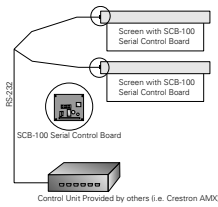
IR-200 INFRARED REMOTE CONTROL

The IR-200 includes the RM-200 14-button infrared transmitter and an infrared receiver for wireless control over SCB-200 equipped screens. Basic functions, such as screen up, down and stop are available, as are more sophisticated functions such as preset and custom aspect ratios.

Optional Accessories:

- WC-200 Wall Controller

Da-Lite Number	Description	Appr. Ship. Wt. (lbs.)	Suggested Retail
96398	NET-200 Ethernet Controller	1	\$165.00
96400	WC-200 Wall Controller	1	145.00
95528	IR-200 Infrared Remote Receiver and Transmitter	3	108.00
96399	RM-200 Infrared Transmitter Only	1	75.00



INTEGRATED SCREEN CONTROL SCB-100 SERIAL CONTROL BOARD

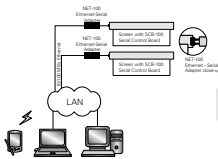
Configurations:

Contour® Factory Integrated	Advantage® Deluxe Factory Integrated
Advantage® Factory Integrated	Director Factory Integrated
External Enclosure	

To order factory integrated SCB-100, simply add an "R" suffix to the screen part number and add \$399.00 Retail to the screen cost.

Da-Lite Number	External Enclosure	Appr. Ship. Wt. (lbs.)	Freight Class	Suggested Retail
92718	External SCB-100 Serial Control Board	5	100	\$399.00

The Serial Control Board allows for control over a screen using RS-232C communication and/or relay closures. Designed for the simplest to most sophisticated system installations, a single Serial Control board provides control over any single motor screen, masking screen or projector lift.



NET-100 ETHERNET-SERIAL ADAPTER

Da-Lite Number	Description	Appr. Ship. Wt. (lbs.)	Freight Class	Suggested Retail
92723	NET-100 Ethernet-Serial Adapter	3	100	\$250.00

The Ethernet-Serial Adapter allows any SCB-100 enabled screen to be controlled over a local area or wide area network. Using standard TCP/IP protocol and a 10Base-T connection, the NET-100 can be easily integrated into almost any existing local area network. With a built-in web server, a screen may be accessed from any web browser software, such as Microsoft Internet Explorer, for control and status information. SCB-100 required for use.